

DEDICATED TO THE LIQUID WASTE INDUSTRY

Pumper®

December 2021
pumper.com



Slinging **DIRT**

This successful family of Illinois pumpers adds system installation and sets up the company for a brighter future

Page 18

PRODUCT FOCUS
**SEPTIC
SYSTEMS AND
MAINTENANCE**

Page 60





Lexus December to Remember. Happy Honda Days. Toyotathon.
Happy Poly Days... Now That's a Celebration We Can Get Behind.

**MERRY CHRISTMAS
& HAPPY HOLIDAYS**

from

POLYJOHN®

there when you need us

2500 GASPAR AVE., WHITING, IN 46394

PJPUMPER.COM | 800.292.1305



DOWNLOAD OUR GUIDES

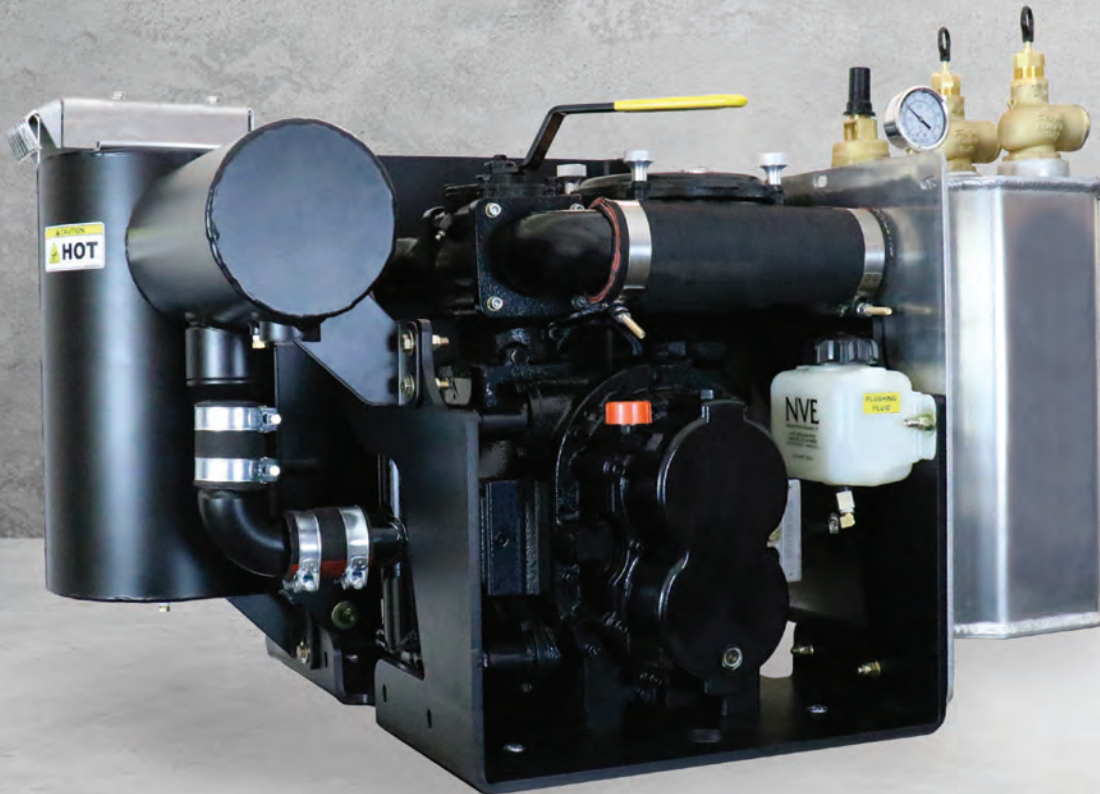
PJProductGuide.com | PJPROReferenceGuide.com



NO CHIP REQUIRED.

B500 Tri-Lobe Blower | 500 cfm

While chip shortages have plagued the new truck market, NVE's B500 is bringing new technology to an old chassis, making the B500 the right choice for the future of your truck! No daily oil consumption, no smoking, and no oil discharge onto customers driveways. See why the B500 is a smoking good deal without all the smoke. US manufactured because we can!



Challenger Series
VACUUM PUMPS & BLOWERS



Good things come in square packages!

...like more surface area for aerobic bacteria to grow. The Eljen GSF's unique design provides a surprising amount of geotextile fabric in a square package to provide low maintenance treatment.

Now that's a gift that keeps on giving!



From your friends at



www.eljen.com



INSANITY =

Continuing To Do The Same Thing Expecting Different Results

DON'T BE INSANE TRY A PORTALOGIX



Smaller frame trucks allow PRO's to get closer to units for service

Why Buy 2 Trucks when **1 TRUCK Does It ALL**

Services 50-70 units on a service route. Eliminates P&D routes. Reduces labor cost, fuel and wear & tear.



585-484-7009 | sales@portalogix.com
PortaLogix.com

YOU'RE FIRED!

**'CAUSE SANTA'S GOT
A NEW RIDE**



From our Transway Family to you and yours, we wish you
a very Merry Christmas and a Happy New Year.



CUSTOM BUILT. DRIVEN BY YOU.



18

Slingsing Dirt - David Steinkraus

This successful family of Illinois pumpers adds system installation and sets up the company for a brighter future.

10 Between the Lines:
6 Classy Truck Trends and How They Help Pumpers Make Money
They're big. They're basic. And today's vacuum trucks help drivers pump more volume and satisfy more customers.
- Jim Kneiszel

14 @pumper.com
Check out the latest online-only content at the *Pumper* website.

28 Classy Truck Roundup: Road Ready
Please open the door to the *Pumper* garage and help choose the classiest truck of 2021.
- Jim Kneiszel

32 Money Manager:
Follow These Steps to Be Prepared When Disaster Strikes
Iowa's Becky and Tim Peltzer benefitted from cloud-based file backup and careful documentation of equipment and spending when fire took down their office.
- Joan Koehne

36 Building the Business: When's the Last Time You Scheduled a Meeting With Employees?
Regular one-on-one talks with crew members creates a better work environment for everyone.
- Kate Zabriskie

40 Rules & Regs:
Delaware county clamps down on onsite developments.
- David Steinkraus

44 Septic System Answer Man: Worry About Water Infiltration So You Don't Worry About Root Intrusion
When chasing down root problems in a septic system, be sure to check for pipe damage and all pipe-and-tank connection points.
- Jim Anderson

48 Snapshot: Pump Chamber Setbacks Would Help Preserve Canada's Clean Inland Waters
A member of the Ontario Onsite Wastewater Association promotes a regulation that would protect an important resource.

50 Classy Truck of the Month
B&D Liquid Waste Hauling, Marshfield, Wisconsin

52 Associations List

56 Product News

60 Product Focus:
Septic Systems and Maintenance
- Craig Mandli

72 Industry News

ON THE COVER:



Smith Septic was a successful pumping company when, six years ago, they added onsite installation to their menu of services. The move has been a perfect fit for Colin (left) and Mark Smith, who posed for a photo at a septic system installation with their Mercedes Sprinter 2500 service van in the background. (Photo by Brad Leeb)

COMING IN JANUARY:

- ▶ **SNAPSHOT:**
Bound for Delaware
- ▶ **CONTRACTOR PROFILE:**
Son takes over family business

Pumper®

DEDICATED TO THE LIQUID WASTE INDUSTRY
www.pumper.com

Published monthly by



COLE Publishing Inc.
1720 Maple Lake Dam Rd.
PO Box 220
Three Lakes, WI 54562

© Copyright 2021 COLE Publishing Inc.
No part may be reproduced without permission of the publisher.
In U.S. or Canada call toll-free 800-257-7222. Elsewhere call 715-546-3346.
Email: info@pumper.com | Website: www.pumper.com
Fax: 715-546-3786

Office hours 7:30 a.m.-5:00 p.m. Central Time, Monday - Friday

SUBSCRIPTION INFORMATION: A one-year (12 issue) subscription to *Pumper* in the United States, Canada and Mexico is free to qualified subscribers. Subscriptions to all other foreign countries cost \$150 per year (\$290 for two years). Subscribers are guaranteed monthly delivery of the magazine. To subscribe please visit pumper.com or send company name, mailing address, phone number and check or money order (U.S. funds payable to COLE Publishing Inc.) to the address above. MasterCard, VISA, Discover and American Express are also accepted. Supply credit card information with your subscription order.

Our subscriber list is occasionally made available to carefully selected companies whose products or services may be of interest to you. Your privacy is important to us. If you prefer not to be a part of these lists, please contact Holly Gensler at holly.gensler@colepublishing.com

CLASSIFIED ADVERTISING: Submit classified ads online at www.pumper.com/order/classifieds. Minimum rate of \$25 for 20 words; \$1 per each additional word. Include a photo for an additional \$125. All classified advertising must be paid in advance. DEADLINE: Classified ads must be received by the tenth of the month for insertion in the next month's edition. PHONE-IN ADS ARE NOT ACCEPTED. Fax to 715-546-3786 only if charging to MasterCard, VISA, Discover or Amex. Include all credit card information and your phone number (with area code). Mail with check payable to COLE Publishing Inc. to the address above. CLASSIFIED ADVERTISING APPEARS NATIONWIDE AND ON THE INTERNET. Not responsible for errors beyond first insertion.



Jim Flory



Winnie May

DISPLAY ADVERTISING: Email Jim Flory at jim.flory@colepublishing.com or Winnie May at winnie.may@colepublishing.com or call 800-994-7990. Publisher reserves the right to reject advertising, which in its opinion is misleading, unfair or incompatible with the character of the publication.

CONTROLLED CIRCULATION: 20,500 per month. This figure includes all circulation regions (nationwide) and international distribution.

REPRINTS AND BACK ISSUES: Visit www.pumper.com/order/reprints for options and pricing. To order reprints, call Jeff Lane at 800-257-7222 (715-546-3346) or email jeff.lane@colepublishing.com. To order back issues, call Holly Gensler at 800-257-7222 (715-546-3346) or email holly.gensler@colepublishing.com.



Live demonstrations and operational equipment for the water and wastewater industries!

weqfair.com | 866-933-2653

▶ **GET THE TRUCK YOU NEED!**
CUSTOM BUILT FOR YOU!



New Hydraulic Hoist System

New Tanks from 1,800 to 5,000 Gal.

100K Limited Engine Warranty

New Custom Dupont Paint

Optional 20K Front Axle

NVE 1600 CFM Blower

New 20K Lift Axle

New Rims & Tires



▶ **2010 Peterbilt 335**
2,500 Gal., Hoist, CALL FOR PRICE!



▶ **2012 Peterbilt**
Cummins ISX, 4,000 Gal., 15 Trucks Ready to Build! CALL FOR PRICE!

 **NEW & USED IN STOCK**
 **MADE IN THE U.S.A.**

- 2 year/100K mile warranty on engine, transmission and rear end for Class 6 and Class 7 vehicles.
- 1 year/100K mile warranty included on engines for class 8 vehicles.



ADVERTISER INDEX

ABBOTT RUBBER COMPANY, INC.
 Abbott Rubber Co., Inc. 54
 ABC Leasing & Financing.....46
 American Tank Company 11

AQUA-Zyme Disposal Sys. .43

arcan
 Arcan Enterprises, Inc.65
 Bright Technologies 38

CAM
 Cam Spray.....26

Cape Cod Biochemical Co. .59

Comforts of Home Services, Inc.
 Comforts of Home Services... 12

CRO Software Solutions
 Cro Software Solutions 58

CRUST BUSTERS
 Crust Busters 16

DAVIDSON TANK
 Davidson Tank.....49

DA Deal Assoc. Inc.
 Deal Assoc.....65

Ecological Laboratories30

Eljen Corporation.....4

Wallenstein
 Elmira Machine Industries/
 Wallenstein Vacuum 35

EAM
 Engine & Accessory, Inc. 41

FLOWMARK VACUUM TRUCKS
 FlowMark Vacuum Trucks ...57

FRUITLAND
 Fruitland Manufacturing.....23

GapVax
 GapVax, Inc.17

Handle-Tech69

HOUSE OF IMPORTS
 House of Imports7

IMPERIAL INDUSTRIES
 Imperial Industries, Inc.83

In the Round Dewatering
 In the Round Dewatering..... 16

INTEGRITY TANK
 Integrity Tank Sales & Svc...45

ITI Trailers & Truck Bodies ..31
 Jet, Inc.12

KeeVac
 KeeVac Industries, Inc.25
 Key Commercial Corp. 30

LANE'S VACUUM TANK, INC.
 Lane's Vacuum Tank, Inc.43

LMT Inc.
 Industrial Vacuum Equipment
 LMT Inc.37

Marsh Industrial26

MASPORT
 Masport, Inc.45

EXPLORER
 McKee Technologies35
 Mid-State Truck Service53

MRP
 Milwaukee Rubber Products.16
 MyTana LLC 51

NAWT
 N.A.W.T.....70

National Truck Center
 National Truck Center9

NVE
 National Vacuum Equipment .3

norweco
 Norweco, Inc.39

NTS NATIONAL TRENCH SAFETY
 NTS (National Trench Safety)50

NUCONCEPTS
 NuConcepts.....8
 Park Process46
 Phoenix Truck Center..... 13

pikrite
 Pik Rite, Inc.63

POLYJOHN
 PolyJohn.....2

PortaLogix
 PortaLogix 4

PL POWER BOOSTER BY PRESSURE LIFT
 Pressure Lift Corporation....69

PRESVAC
 Presvac Systems.....84

Sumit
 Ritam Technologies LLC.....63

ROEDA
 Robinson Vacuum Tanks21
 ROEDA.....57

Roth
 Roth North America57

Satellite
 Satellite Industries 15

ScreenCO Systems
 ScreenCO Systems, LLC42

SM/TECH FILTER
 Sim/Tech Filter Inc.49

T&T TOOLS
 T&T Tools, Inc.67

T.S.F. COMPANY, INC......27

TANK WORLD CORP
 Tank World Corp.33

TankTec
 TankTec65

TTS
 Transport Truck Sales, Inc...54

TRANSWAY SYSTEMS, INC......5
 Truck Country 46

TSI
 TSI Tank Services, Inc.38

TUF-TITE
 TUF-TITE, Inc.45, 61

VACUTRUX
 Vacutrux Limited35

VSI
 Vacuum Sales, Inc.12

VARCO SUPPLY
 VARCO.....82

WALEX
 Walex Products Company. .47

WE
 Wee Engineer, Inc.58

PRO-VAC
 Westmoor Ltd.30
 WWETT Show34, 55, 71

Classifieds.....76-81
Marketplace.....74-75

REGIONAL ADVERTISERS

Midwest Supplement

(after page 51)

LINCOLN CENTER MANUFACTURING, LLC
 Lincoln Center Manufacturing/
 Marengo Fabricated Steel . 1

Navitas Credit Corp. 3
Stroetz Truck Sales 3

Eastern Supplement

(after page 51)

Andert, Inc. 4

LINCOLN CENTER MANUFACTURING, LLC
 Lincoln Center Manufacturing/
 Marengo Fabricated Steel ..1

Navitas Credit Corp......3
Stroetz Truck Sales.....3

VSI
 Vacuum Sales, Inc.2

Have a joyful and merry
CHRISTMAS

NUCONCEPTS
 VERY IMPRESSIVE PORTABLES

45652 Division St., Lancaster CA 93531
 www.nuconcepts.com • info@nuconcepts.com • 800-334-1065 • 909-930-6244
 PROUDLY MADE IN THE USA

Pumper More Stories at Pumper.com/featured
 See what's not in print!

National Truck Center

EST. 1981

954-410-6553
786-367-4961
www.NationalTruckCenter.com
3001 EAST 11th AVENUE | HIALEAH, FL 33013

NEW TRUCKS



2022 International MV-607

Cummins L9 (300 HP), Allison Automatic, New 2500 Gallon Tank, New Jurop PN-84 Vacuum Pump (317 CFM)

\$121,500



2022 Kenworth T-370

Paccar PX-9 (270 HP), Allison Automatic, New 2500 Gallon Tank, New Jurop PN-84 Vacuum Pump (317 CFM)

\$121,500



2022 International MV-607 Portable Toilet Truck

Cummins L9 (300 HP), Allison Automatic, New 2500 Gallon Tank, New Jurop PN-84 Vacuum Pump (317 CFM)

\$125,000



2022 Mack MD7

Cummins ISB (260 HP), Allison Automatic, 2500 Gallon Tank, PN-84 Jurop Vacuum Pump (317CFM)

\$121,000



2022 Kenworth T-370

Paccar PX-9 (350 HP), Allison Automatic, New 3600 Gallon Tank, New Jurop R-260 Vacuum Pump (363 CFM)

\$143,000



2022 International HV-607

Cummins L9 (350 HP) Allison Automatic, New 4000 Gallon Tank, New Jurop LC-420 Vacuum Pump (425 CFM)

\$143,500



2022 Kenworth T-370

Paccar PX-9 (380 HP), Allison Automatic, New 4000 Gallon Dump Tank, New Jurop LC-420 Vacuum Pump (425 CFM)

\$154,000



2022 Kenworth T-370

Paccar PX-9 (380 HP) Allison Automatic, New 4000 Gallon Tank, New Jurop LC-420 Vacuum Pump (425 CFM)

\$146,000

PRE-OWNED TRUCKS



2014 International 4300

DT-466 (245 HP), Allison Automatic, 203K Miles, New 2000 Gallon Tank, New Jurop PN-58 Vacuum Pump (230 CFM)

\$77,000



2014 International 4300

DT-466 (245 HP) Allison Automatic, 153K Miles, New 2000 Gallon Tank, New Jurop PN-58 Vacuum Pump (230 CFM)

\$82,000



2012 International 4300

DT-466 (245 HP), Allison Automatic, 162K Miles, New 2500 Gallon Tank, New Jurop PN-84 Vacuum Pump (317 CFM)

\$67,000



2013 International 4300

DT-466 (245 HP), Allison Automatic, 170K Miles, New 2500 Gallon Dump Tank, New Jurop PN-84 Vacuum Pump (317 CFM)

\$78,000



2013 Freightliner M2

Cummins ISB (285 HP) Allison Automatic, 218K Miles, New 2500 Gallon Tank, New Jurop PN-84 Vacuum Pump (317 CFM)

\$78,000



2014 International 4400

DT-466 (245 HP), Allison Automatic, 133K Miles, New 3600 Gallon Tank, New Jurop R-260 Vacuum Pump (360 CFM)

\$99,000



2014 Freightliner M2

Cummins ISC (350 HP), Manual, 172K Miles, New 4000 Gallon Tank, New Jurop LC-420 Vacuum Pump (425 CFM)

\$111,000



2014 Freightliner M2

Cummins ISC (350 HP), Manual, 204K Miles, New 4000 Gallon Tank, New Jurop LC-420 Vacuum Pump (425 CFM)

\$108,000

1-YEAR, 100,000 MILE ENGINE WARRANTY NATIONWIDE - 5-YEAR WARRANTY ON TANK
TRANSPORTATION AVAILABLE NATIONWIDE



Sold exclusively at
National Truck Center





Contact Jim with your comments, questions and opinions at editor@pumper.com.

Jim Kneiszel
Editor

6 Classy Truck Trends and How They Help Pumpers Make Money

They're big. They're basic. And today's vacuum trucks help drivers pump more volume and satisfy more customers

The past year has been like no other in our memory. Working through the roller coaster of the COVID-19, pumpers have always been there to answer the call. And with so many people working from home, their phones rang and rang. It was a source of pride for septic system professionals that they kept working every day, proving they provide an essential service to millions of people across the country.

While many aspects of work and life remained in flux throughout the long pandemic, one thing remained constant in the wastewater industry. Technicians required quality tools to do their important work, and none are more important than their vacuum trucks. I have spoken to many pumpers whose crews relied on rock-solid service trucks as they emptied 8-12 tanks a day trying to keep up with increasing demand.

Oftentimes these hardworking service providers couldn't spare their trucks, even for a day, for unscheduled repairs and maintenance. So it was no surprise to me that our readers continued refurbishing or upgrading their equipment at a time when other business owners were taking a more cautious approach to fleet management. They simply couldn't do without reliable pumper trucks.

COMMON SENSE PREVAILS

I think the 2021 Classy Trucks reflect that business common sense that said the past two years were no time to draw back on plans for newer or better trucks. Over the past few years, the entries to our Classy Truck contest have continued to roll in, our owners secure in spending the cash or setting up payments all the while knowing these were sound investments in the present and the future.

Take a look inside this issue for a review of the dozen trucks featured over the past year. Then cast your ballot to help us choose the top truck of the year, which will be featured on the cover of the February 2022 issue of *Pumper*. The winning truck owner will receive a vinyl Classy Truck of the Year decal to proudly display on the tank or cab for all in their hometown to see and appreciate.

Compiling the stats about the 2021 Classy Trucks shows a number of industry trends. Among the observations:

There's a lot of variety in brand and builders

The field this year is dominated by Peterbilt, with five of the trucks coming from that popular marque. The remainder of the rigs are split among several builders, including Kenworth, Freightliner, Western Star, Mack and International. Sorry Volvo fans; you are not represented this year. And I'm not sure we've ever had this diverse of a list of vacuum truck builders represented. Three came from Imperial Industries, two each from Amthor International and Presvac Systems, and singles from Andert, FlowMark, Vacutrux, KaryMore and 27th Trucks.

➤ Fully half of this crop of trucks feature automatic transmissions, eliminating a barrier of entry to many new CDL drivers who were not trained or are no longer interested in jamming gears all day long.

Trucks are bigger and more powerful

The move toward higher wastewater capacity began many years ago, and it continues today. Tank size is driven by a number of factors, but clearly most importantly pumpers want to reduce the number of trips to the dump station. That's primarily because each drive to the treatment plant or to land-apply septage delays drivers from paying service calls. Also, holding and septic tanks are getting bigger. Where once a house might have a single 500-gallon septic tank, bigger homes with more bedrooms are often requiring multiple tanks reaching 1,000 to 1,500 gallons each. It's gotten to the point that even the bigger trucks might have to dump after one call.

So while there is a 2,000-gallon tank on our list this year, half of the trucks hold 4,000 or 5,000 gallons of waste, and the overall average is creeping close

to the 4,000-gallon mark. Vacuum power is following the same trend. While there is a 260 cfm pump on the list, more pumps are topping out at 500 cfm and powerful blowers are taking more share of the market.

The chassis provide longer effective service

Only a few of our trucks in the 2021 lineup would be considered showroom fresh. One is built on a 2021 chassis, two on 2020 chassis and one from 2019. More often, the trucks have seen a lot of miles on the odometer. Two of our trucks this year are 2004 models that have been refreshed with new equipment. And the average age of the 12 trucks is just shy of seven years.

What can we glean from the aging of the Classy Trucks? Maybe today's trucks are built to a higher quality, the manufacturers have worked the kinks out of the advanced emissions systems, or rising chassis cost is encouraging pumpers to look for ways to build for quality and economy. At any rate, it looks like pumpers are trying to wring more life and value out of their equipment.

Owners are looking for utility over flashiness

I remember the early 2000s, when Classy Truck owners seemed like they were trying to top each other with a lot of bling and over-the-top features. One crazy rig sported scissor doors like an Italian sports car. Others were dripping with chrome accents, fancy underchassis lighting and complex paint treatments that added thousands of dollars to the cost of a build.

Truck owners seem to be aiming more for practicality these days. Chrome is being dropped in favor of spending money on LED lighting and safety strobes. Instead of flashy paint, owners are ordering crisp, clean graphic details aimed at linking passersby with their social media. When a creative approach is called for, they seem to favor vinyl wraps to costly custom paint jobs.

Driver convenience and efficiency are key

Continual improvements are making it easier to get new technicians in the driver's seat. Fully half of this crop of trucks feature automatic transmissions, eliminating a barrier of entry to many new CDL drivers not trained or uninterested in jamming gears all day long. At one time, old-school pumpers took pride in expertly working an 18-speed gearbox, but the number is fewer every year. And owners tell me that veteran drivers are adapting easily to the automatics. Many other conveniences, such as air-ride seats, leather interiors, Bluetooth in the cab, backup cameras and safety lighting are also appreciated and could play a role in employee retention.

Red, white and blue

The color of a rig generally has an impact brand identity, so it's always interesting to see the choices being made by Classy Truck owners. This year they stuck to red, white and blue. Four of our trucks are the traditional white, which is always thought of as an indicator of cleanliness. Three each went with blue trucks and red trucks. And a pair of the trucks went with a patriotic red, white and blue theme. Absent from the list are colors screaming to be noticed, like bright yellow, purple, pink or any custom metal flake or flamed-out look. And typical years will see a few black, brown or gold colors pumping companies might choose to differentiate themselves in a crowded marketplace.

MOST WONDERFUL TIME OF THE YEAR

I want to take a moment to wish you and your families a happy holiday season. I hope you had a great 2021 and are looking forward to an even better 2022. Pumpers have seen a lot of upheaval over the past year, but through it all you have continued to offer consistent and quality service to your customers in their time of need. Please know they appreciate your care and hard work, and I do, too! **P**



It's Your Magazine.
Tell Your Story.

Pumper welcomes news about your company or services.
Send your ideas to editor@pumper.com.

ATC
American Tank Co. | PORTABLE RESTROOM TRUCKS
SLIDE IN UNITS
SEPTIC TRUCKS

Backed By a History of Reliable Service, Innovation & Care

**TRUCKS
BUILT FOR
DEMANDING
JOBS
JUST LIKE
YOURS**

Look to us for the toughest septic trucks, portable restroom trucks and slide-in units. Crafting any truck to your needs.

- Specialized & Customized Septic Trucks
- Portable Restroom Trucks Built for Your Specific Needs
- Slide In Units: Affordable Back-up or Starter Tanks That Are Tough & Compact

**CONTACT TIM COUNTS 254-721-5675 or BRUCE CURRY 254-760-1514
— www.atcvacuumtruck.com —**



Accu-Tab® Wastewater Tablets

- U.S. made, recognized global brand with no imported ingredients
- Chlorine tablet with beveled edges to minimize wicking
- Consistent chlorine strength for reliable dosing control
- No measuring, mixing, or spilling of chemicals common with granular and liquid chlorine
- Stearate free formula with balanced pH

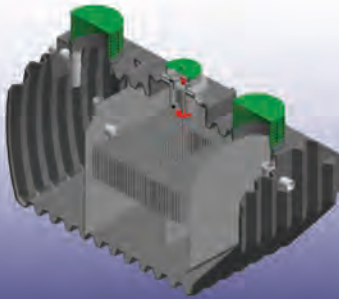
Illumi-Jet UV Disinfection Unit®

- UL listed as a NEMA 6p enclosure (watertight submergence test)
- Install directly in ground or in pump tank on 4" effluent line
- Complete disinfection without the use of chemicals
- Hermetically sealed electrical components
- High capacity disinfection reservoir
- Kapton® seals improve serviceability



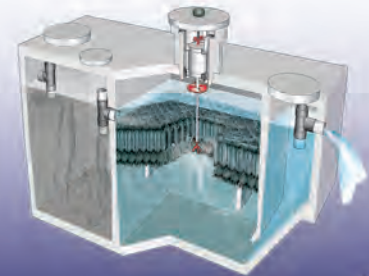
Wastewater Treatment Solutions

Founded on Innovation. Anchored by Service.®



Residential & Commercial Treatment Plants

- Concrete and rugged polyethylene material
- 500-1500 GPD Residential Systems
- 1500-300,000 GPD Commercial Systems
- Up to 800 GPD in plastic design
- A single moving part
- Innovative design for easy system servicing
- No filters to clog
- Lifetime exchange program



www.jetincorp.com • 800.321.6960 • email@jetincorp.com



THE MOST LAYOUTS AVAILABLE FOR HANDICAP ACCESSIBLE TRAILERS



Proudly Made Since 2003

Comforts of Home
Services, Inc.
BATHROOM • SHOWER • SPECIALTY TRAILERS



GS-07F-0236V

See our website for floor plans and options.

info@cohsi.com • 630.906.8002 • www.cohsi.com



Vacuum Sales Inc.

51 Stone Road, Lindenwold, NJ 08021

Order Discounted Pumps Online
24 hours a day 7 days a week

www.vacuumsalesinc.com

parts@vacuumsalesinc.com



We Service
What We Sell



800-547-7790 • fax: 856-627-3044



*Helping you
get the job done!*



*2,500 & 3,500 Gallon Septic Trucks
On The Ground, Ready To Roll!*



Best prices on 2,000-5,000
gal. pump trucks,
Non-CDL, tandem 3,500 gal.
pump trucks, tri-axle builds.

We install pressure washers.

We can install any
CFM pump of your choice.

We can also paint
any color you'd like!



**PHOENIX
TRUCK CENTER**

Atlanta, GA

404-844-8968 • 678-371-4782

sales@phoenixtruckcenter.net

www.PhoenixTruckCenter.net

@Pumper.com

Visit the site daily for new, exclusive content. Read our blogs, find resources and get the most out of Pumper magazine.



COLD CLIMATES

septic system insulation

For those of us who live in colder climates, winter is here. Both during construction and with existing systems there are measures that can be taken to reduce the likelihood that systems will freeze.

[pumper.com/featured](#)



DEMONSTRATING COMMITMENT

pumper seeks kidney donor

Pennsylvania Pumper Eddie Schlosser is not afraid to work hard and put in long hours, even though he is battling a hereditary kidney disease that requires frequent trips to the hospital. He's undergoing dialysis three times per week while working more than 40 hours to support his family. Now he's looking for a kidney donor.

[pumper.com/featured](#)

“If we're going to be successful, safety training cannot be about compliance. We have to let human beings know we care about them and let them know we want them to stay alive.”

— 5 Ways to Shake Up Your Safety Training
[pumper.com/featured](#)



TROUBLESHOOTING A SEPTIC TANK

determining structural integrity

One concern service providers have when troubleshooting a system is whether the septic tank or holding tanks are structurally sound and in good condition. Investigation of the tank for structural soundness starts as soon as the lid is removed.

[pumper.com/featured](#)

EQUIPMENT APPRAISALS

how to establish value

Before selling an asset in your fleet, you might want to get a construction equipment appraisal. This consists of an in-person inspection of the equipment by a qualified professional and an assessment of its condition against a variety of factors. This online exclusive article takes a look at some of the ways equipment is evaluated.

[pumper.com/featured](#)



CONNECT WITH US



emails and alerts

Visit [Pumper.com](#) and sign up for newsletters and alerts. Get exclusive content delivered right to your inbox, and stay in the loop on topics important to you!

want more?



Find us on Facebook at [facebook.com/PumperMag](#) or Twitter at [twitter.com/PumperMag](#)



Happy Holidays



MRP
MILWAUKEE RUBBER PRODUCTS

HOSE & EQUIPMENT SPECIALISTS

KanaFlex®
Hose Distributor

KanaFlex® **FLEXAUST™** **PLASTIFLEX** **Ugerflex** **Jurop** **E.T.N.** **NVE**

Fast Shipping! www.MilwaukeeRubber.com 800-325-3730

FORGET BACKFLUSHING

SAVE TIME AND MONEY!

Through the use of engineered blades and high-power rotation the Crust Buster creates a "lifting" agitation within your tank.

Now buy all your Crust Buster products online!
www.crustbusters.com

CRUST BUSTERS

Local Phone - 763-878-2296

888.878.2296

VISA MasterCard

DON'T DRIP DRY YOUR SLUDGE, DEWATER IT OVERNIGHT!

Patent #9,828,274

Dewaters Overnight
Consistent Results
Low Energy Use
Self-Cleaning

- >All Stainless Steel & PVC construction
- >Roll-Off Frame
- >Very Forgiving
- >Amazing results

If it will Floc, it will work.

In the Round Dewatering
ITRDewatering.com
317-539-7511

**NEW YEAR,
NEW EQUIPMENT?!**

GapVax®

#BESTTRUCKSINTHEBUSINESS



**VHX
SERIES**

- WET/DRY SINGLE MODE FILTRATION
- OPTIMUM WEIGHT DISTRIBUTION
- ROAD LEGAL
- IMPROVED SAFETY FEATURES
- INCREASED PERFORMANCE



NATIONAL ASSOCIATION
NATM
OF TRAILER MANUFACTURERS

JET7

GAS OR DIESEL • NATM CERTIFIED
"THE BETTER JETTER"



AIR MOVERS

HYDRO EXCAVATORS

COMBO JETVACS

RECYCLE JETVACS

JETTERS

TRAILER JETTERS

PARTS & MORE

Thank you for another great year! 2021 had its challenges but we couldn't have gotten through without our dedicated team, dealers, vendors and customers! Thank you! We look forward to seeing you at the WEQFair in Jacksonville, Florida next month; at WWETT in February and all of the other events coming up in 2022!

For the #1 Choice Manufacturer of custom-built industrial and municipal vacuum equipment, GapVax has what you need!! Check out gapvax.com for more information and keep up to date with us on social media!

PARTSEXPRESS

888-442-7829
JOHNSTOWN, PA

281-884-8658
LA PORTE, TX



Wishing you a safe & Healthy holiday season! Merry Christmas!



This successful family of Illinois pumpers adds system installation and sets up the company for a brighter future

By David Steinkraus



Slingshotting DIRT

Family company Smith Septic has been pumping septic tanks in central Illinois for decades. Now, with the third generation taking over, the company has expanded into a part of the wastewater business that it had previously ignored: installing.

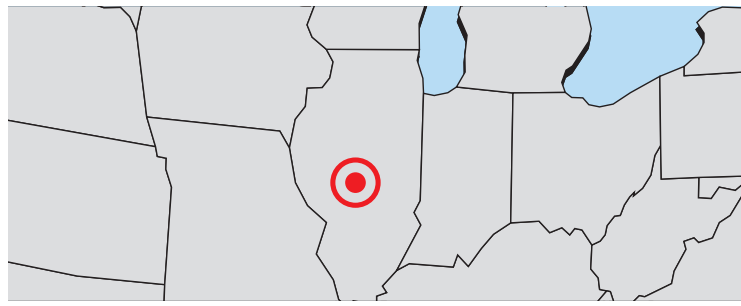
Smith Septic started installing onsite systems only six years ago.

“It was a natural fit,” says company owner Mark Smith. “For all those years of pumping through three generations, we were giving away all of the installation business. I recall telling Colin when he was about 16 that he might as well get his install license right now. Instead of giving away all the money, we decided to do it ourselves.”

Colin, now 28, is his son and represents the third generation at the company located in Rochester, a small village just east of Springfield, the state capitol.

Many of the onsite systems in their area are 40 or 50 years old and need replacing, Colin says. Many of the subdivisions were developed in the 1980s and '90s when builders installed aerated systems that

Technician Steve Maxvill concentrates on digging a trench during a septic installation. (Photos by Brad Leeb)



Smith Septic Inc.

Rochester, Illinois

OWNER:	Mark Smith
FOUNDED:	1963
EMPLOYEES:	4
SERVICE AREA:	30-mile radius of Springfield (about 6 counties)
SERVICES:	Pumping, installations, lift station maintenance, jetting, tank locating, real estate inspections, bulk water pumping
AFFILIATION:	Onsite Wastewater Professionals of Illinois
WEBSITE:	smithseptic.com

“ I LIKE CREATING AND MAKING THE EARTH A BETTER PLACE. ”

COLIN SMITH

discharged into common collectors. Residents believed their systems didn't need maintenance, and no one was tasked with caring for them, he says.

Colin joined the company full time in 2016. Before that he was working on a career as a chef. It is a passion, but the area where he lives does not provide much opportunity for a career in food.

He also enjoys installing. “I like creating and making the Earth a better place,” he adds.

MOVING THE DIRT

Smith Septic has become very busy after adding installing to its menu of services, Mark says. “With a three-generation, family-owned business, our name's out there.”

The business was founded by Gene Smith in 1963. He died in 2013. Without his backbreaking dedication to growing the business, say Mark and Colin, they wouldn't be where they are

now, and they wish he could see what has become of what he began.

Even after only six years of installing, the split in business is about 45% installing (with 10-15% of that in new construction), 40% pumping and 5% repairs of lift stations and other smaller jobs, Colin says.

Springfield, known as the home of Abraham Lincoln, has about 114,000 residents, and as in other parts of the country, Mark says, people want to move out of cities and live in the country. They're willing to pay the price for land and onsite wastewater systems.

About 80% of the company's installation work is in Sangamon and Menard counties. Sangamon County includes the city of Springfield and handles permitting for neighboring Menard County.

New construction is easier work because there's plenty of room to site a system and stage equipment, and no worries about damaging existing landscaping, Colin says.

PUMPING AND DUMPING

Septage disposal is relatively simple. Most pumping work is in Sangamon County, so most septage goes to the Sangamon County Water Reclamation District. There are three other places in the company's territory — in Christian, Morgan and Macon counties — where Smith technicians can dump based on their daily routes. Residential pumping is within about a 30-mile radius of the shop, but the company has some commercial clients that are farther away.

Work goes on year-round because central Illinois is temperate enough for winter installing. When there's a dry winter week and the soil is not too wet, they'll put a system in, Colin says.

“We've worked when it was zero degrees out putting in a tank. We had to because the tank caved in,” he says.

Another service is system maintenance for several RV parks, both pumping septage and hauling septage to seed package plants with microbes when they're started in preparation for the summer tourist season, which brings visitors to Lincoln sites.



Owner Mark Smith (Right) and his son Colin Smith.

► Pumper PROFILE



▶ Steve Maxville operates a Bobcat excavator while installing a trench for a new septic system.

▶ Colin Smith works on a new system install. The system is a BioMicrobics MicroFast housed inside an Infiltrator Water Technologies tank.



MACHINE DIVERSIFICATION

Because of all the services it offers, the company uses a variety of equipment.

For pipe work there is a Honda jetter from Imperial Industries, an Amazing Machinery camera and a RIDGID Scout locator.

For pumping, technicians use a 2020 International HV607 from Imperial carrying a 4,000-gallon aluminum tank and a NVE607 pump from National Vacuum Equipment.

A Chevrolet Kodiak 4500 4x4 service truck pulls equipment to jobs. The Smiths are looking for a new equipment transport trailer.

A 2016 Dodge Ram 2500 diesel 4x4 truck and a Mercedes Sprinter van are used for service work.

Installations are handled with a 2014 Bobcat E45 mini-excavator and a 2020 Bobcat T64R skid-steer. A forklift attachment for the Bobcat skid-steer allows the crew to move tanks around, and because this is the Midwest, there's a snowplow attachment, too.

In addition to Colin and Mark, the other members of the Smith Septic team are Steve Maxvill and Dylan Link.

“EVERYBODY’S USING ALL THE ANTI-BACTERIAL LIQUIDS, LOTIONS, SOAPS ... AND WHEN YOU COUPLE THAT WITH PEOPLE WHO ARE NOT TAKING CARE OF THE MAINTENANCE ASPECTS OR DIDN’T KNOW ANY BETTER, SUPPOSEDLY, THEN YOU KNOW WHAT HAPPENS.”

MARK SMITH

RETROFIT SOLUTIONS

Many systems the team installs require a lift station because of high water tables or because the effluent pipe emerging from the house is too deep, Colin says. They often pair aerated systems with Infiltrator chambers because the combination allows for smaller drainfields.

“We do a lot of systems where the tank is still good but the laterals have failed,” he says. So they’ll install a lift station and pump up to either new laterals or a sand bed.

They also do traditional gravity septic systems, but the number of those has been on the decline because soils won’t accommodate them.

Smith Septic recently became a BioMicrobics dealer and has its first system with that technology scheduled to go in the ground. Most installations are residential, Colin says. That’s another reason for offering BioMicrobics, he

(continued)



ROBINSON VACUUM TANKS

Call (814) 933-0927, visit www.RobinsonTanks.com, or email sales@robinsontanks.com

— OFFERING SALES, PARTS & SERVICE —



PORTABLE RESTROOM TRUCKS

- Tank Sizes from 980 - 2000 Gallons
- Choose from Aluminum or Steel Tanks



VACUUM TRUCKS

- Tank Sizes from 1200 - 5500 Gallons
- Aluminum Tanks



SLIDE-IN TANKS

- Tank Sizes from 300 - 1500 Gallons
- Aluminum Tanks
- Flanged/Dished or "Soup Can" Styles



TRAILER UNITS

- Tank Sizes from 300 - 2000 Gallons
- Aluminum Tanks



SINKS / HAND SANITIZER STAND

- 18 Gallon Fresh & Gray Water Tanks
- NSF Compliant
- Aluminum Vanity
- Free Standing
- Aluminum post with steel base



ROLL-OFF TANKS

- Tank Sizes from 2000 - 5000 Gallons
- Aluminum Tanks

VISIT OUR WEBSITE TO SEE ALL AVAILABLE INVENTORY

▶ Pumper PROFILE

“GOOD QUALITY, ETHICAL CUSTOMER SERVICE HAS BEEN OUR BEDROCK. YOU DON’T STICK AROUND FOR THREE GENERATIONS IF YOU’RE DOING SOMETHING WRONG.”

MARK SMITH

Steve Maxvill (left) and Colin Smith are shown installing a new septic system.



Playing catchup with system maintenance

Long ago when subdivisions were built in the more rural areas around Springfield, Illinois, the importance of onsite system maintenance was never really stressed.

In the 1980s and 1990s, developers built subdivisions in which each house had an aerated onsite system discharging into community tiles laid among the houses. But, says Colin Smith of Smith Septic, there was no requirement for anyone to maintain the units. And property owners didn’t know any better.

“There were thousands put in because they were so easy,” Colin says. “Why would an installer spend all day putting in 300 feet of laterals and a septic tank when they could just put a tank in the ground, dig in a 20-foot piece of pipe, and be done in two hours?”

Installers told people they had laterals that wouldn’t plug, and

homeowners understood that to mean their systems required no maintenance, he says. Because they weren’t told otherwise, people never had their tanks cleaned or maintained pumps. “So these things turned into surface-discharging septic tanks,” Colin says.

Another factor is what people put into their tanks.

“Everybody’s using all the anti-bacterial liquids, lotions, soaps and that just kills all the bacteria in these systems,” says Mark Smith, the company owner. “And when you couple that with people who are not taking care of the maintenance aspects or didn’t know any better, supposedly, then you know what happens.”

“I would say we’ve seen it all, but there’s always tomorrow,” he adds.

says, because it can handle waste from large, newer houses without covering most of a lot with a drainfield.

Sometimes the company’s challenge isn’t equipment or soil, but people. One recent project occurred at a property that had been subdivided. A house and barn occupied the original parcel, but when the land was subdivided about 1980, one person bought the barn while another took the house.

The house came with an easement for an onsite system to serve the barn property. When that easement was exercised recently, the house owner was unhappy. He wouldn’t allow Smith technicians to cross his land, so the crew had to work from the barn property and entirely within the restrictive drainfield area.

“The entire septic system area was about 20 feet wide by about 30 feet long,” Colin says. “We barely could make it work.”

TOUCHY SITUATION

Technicians first installed half the laterals and had those inspected. Then they backed up and installed an aerated treatment unit. Then they backed up again and installed the other half of the laterals, Colin says.

“The homeowner called the cops on us probably 20 times,” he says. The complaint was always for trespassing. Colin installed fencing around the onsite area, with deputies and the homeowner watching, to ensure no one crossed out of the drainfield zone.

One day the crew hit a privately installed waterline running to the house of the complaining owner. The line was not marked on any set of plans, Colin says.

“Nobody had any idea how to shut it off, so it ran for like a day straight because the small town couldn’t get out to turn it off. They had to dig up the street and cap it,” he says.

While the water was running, it filled the hole for the tank to a depth of about 5 feet. “And it was 5 degrees outside, so the next day it froze rock solid,” Colin adds. “For putting in a system that was only a one-bedroom ... something that should take one day, instead took about four or five days.”

(continued)



FRUITLAND[®]

Manufacturing

Est. 1957

VACUUM PUMPS

**ONE PUMP FOR EVERY
APPLICATION**

Durable, rugged, and longstanding describe a Fruitland vacuum pump. We have the right size pump for your application with models from 127 to 716 CFM. Please contact us for more information and keep your business growing!

**ONE
★ TOUGH ★
PUMP**

CONTACT US

1-800-663-9003

sales@fruitland-mfg.com

www.fruitlandmanufacturing.com



RCF-172



RCF-344



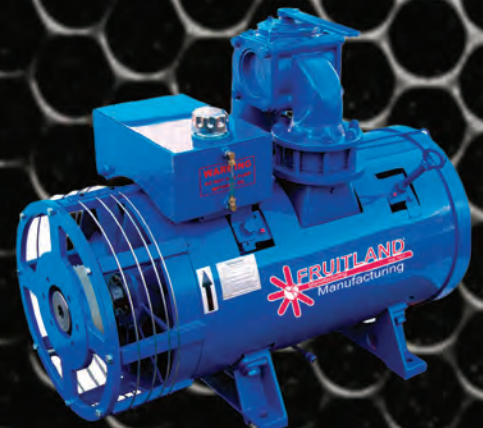
RCF-370



RCF-500



RCF-870



RCF-1200

The homeowner feared the new system would fail and untreated wastewater would saturate his property, Colin explains. What the homeowner didn't understand is the reduction in drainfield size possible with an aerated unit. For an advanced treatment unit, Illinois allows drainfields to be two-thirds the size of the field for a septic tank, Mark says.

ALWAYS SOLID SERVICE

The Smiths don't do much marketing because the company's reputation brings business to them. They have a company website, and every once in a while they use a Facebook ad or create a post, Colin says.

"We got rid of all of the phone book stuff because that was a waste of time," he says.

"And money," Mark adds.

Many plumbing companies in the area refer customers to Smith Septic, Colin says, including one that gave up pumping and installing to concentrate only on plumbing. Three generations of presence generates useful relationships like that, Mark says.

"Good quality, ethical customer service has been our bedrock," Mark says. "You don't stick around for three generations if you're doing something wrong."

Colin was a perfect fit for installation work, he says, and from there the company grew that business division. In the first year, the team did only two installations, Colin says. In the second year there were eight, then 14, then 28. The trend in 2020 and 2021 has been no different.



Colin Smith installs a blower from BioMicrobics for a residential septic system.

"Last year I think we did almost 50," he says. And that was a year with a very wet spring that stalled work for about four months. During the fall and winter they made up for delays with two or four jobs a week, he says, a pace that stretched the crew very thin.

When they can find spare time, Colin enjoys cooking. Mark is a bicycle enthusiast, especially vintage BMX racing bikes, an interest recovered from his childhood. Both of them like classic cars, and Colin has a 1964 Mercedes he's restoring.

His Mercedes is almost as old as the family company. And like a solid, reliable car, Smith Septic is still on the road, taking care of its customers as it always has. **P**

MORE INFO

Amazing Machinery, LLC
800-504-7435
www.amazingmachinery.com

BioMicrobics, Inc.
800-753-3278
www.biomicrobics.com

Bobcat Corporate
800-743-4340
www.bobcat.com

Imperial Industries, Inc.
800-558-2945
www.imperialind.com
Ad on page 83

Infiltrator Water Technologies, LLC
800-221-4436
www.infiltratorwater.com

National Vacuum Equipment
800-253-5500
www.natvac.com
Ad on page 3

RIDGID
800-474-3443
www.RIDGID.com

Dylan Link connects electricity to run a blower in a new system.



Technician Link installs a control panel box from BioMicrobics.

Happy Holidays From KeeVac Industries, Inc.

Kevin
Jessica

Matt
Paxton



Septic & Grease

Slide Ins

Restroom Trucks



Call: 866-789-9440 ❄️ www.Keepvac.com



WORKING WELL UNDER PRESSURE

Pressure Washers & Drain Jetting Equipment

NEW



RCJ4008H

»8 gpm @ 4000 psi
»800 cc EFI
Honda Engine

»200' x 3/8" Jet Hose on Manual Reel

Call for Quote

NEW



LJ4008H

»8 gpm @ 4000 psi
»800 cc EFI
Honda Engine

»200' x 3/8" Jet Hose on Manual Reel
(NARROW DESIGN)

Call for Quote

NEW



4008H Power Unit

»8 gpm @ 4000 psi
»800 cc EFI
Honda Engine

»400' x 3/8" Jet Hose on DC Powered Reel

Just Add A Tank! **Call for Quote**

3012H Power Unit

»12 gpm @ 3000 psi
»800 cc EFI
Honda Engine

»400' x 1/2" Jet Hose on DC Powered Reel

Call for Quote

3012H Compact Skid

»12 gpm @ 3000 psi
»800 cc EFI
Honda Engine

(100 GALLON TANK)

Call for Quote

4008H Compact Skid

»8 gpm @ 4000 psi
»800 cc EFI
Honda Engine

(100 GALLON TANK)

Call for Quote

NEW



STB3012H

»12 gpm @ 3000 psi
»800 cc EFI
Honda Engine

»400' x 1/2" Jet Hose on DC Reel

Call for Quote



TT4 SERIES

»18 gpm @ 4000 psi
»74 HP Turbo Inter-cooled HATZ Engine

»500' x 1/2" Jet Hose/ Hydraulic Reel

Call for Quote

*** All Jets Shown Come with Pulse Valve, 2 Jet Nozzles, Tool Box, Gloves, Safety Glasses, ***
Tip Cleaner, Tiger Tail, Wash Down Trigger Gun with Nozzles.

Building Drain and Sewer Equipment since 1981.

We Build Electric, Gas and Diesel powered models up to 4000 psi, flows up to 40 gallons per minute.

Don't see exactly what you want...

We will custom build exactly what you want!

800-648-5011 | www.camspray.com | sales@camspray.com

Marsh

INDUSTRIAL

P.O. Box 1107 - 135 E Mile Road - Kalkaska, MI 49646

p: 231.258.4870 - f: 231.258.2019 - sales@marshind.com

800.952.1537 - WWW.MARSHIND.COM

VACUUM SEPTIC UNITS



Thank You West Michigan Septic for adding another one of our units to your fleet. It's always a pleasure working with you!

PORTABLE TOILET UNITS

Portable Toilet Restroom Services Units.



DOT INDUSTRIAL VACUUM UNITS



DOT Code & Non-Code Hoist & Rear Door Options

MINI VAC TRAILERS

Industrial Units
DOT Code & Non Code



SLIDE-IN UNITS



Various Sizes Available

Quality People Doing Quality Work



Join us on Facebook See the progress of some of our units in the making.

Check out our website for more information: www.marshind.com



TUFF-JON

Portable Toilets | Holding Tanks | Hand Wash Units | Accessories

Wishing You Happy Holidays



TJ Kids

TJ Shorty



Tuff-Jon III



Tuff-Jon



100 Gallon Fresh Water Supply Tank



60 Gallon Rinse Tank



Containment Tray



Sink Lifting Bracket



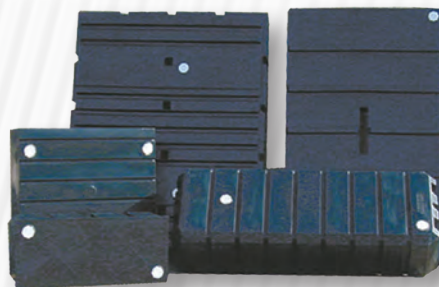
90 Gallon Free-Standing Sink with Optional Handicap Accessible Sink (45 gallons fresh water)



TJ Handy Stand Waterless Gel Touch Dispensers



TJ Junior Single Free Standing Sink (16 gallons fresh water)



- Tank sizes 60, 105, 225, 300 and 440 gallons.
- Standard holes are 2 - 3" holes with plugs
- Can customize holes to match your specs



Interior View of Deluxe TJ-III

- Lifting Bracket Assembly
- Sky Heater
- Corner Shelf
- Towel Dispenser
- Hand Washer Available For Both Styles of Tuff-Jon



The TSF Company Inc. Toll Free: 1-800-843-9286 | 812-985-2630 | Fax: 812-985-3671
 2930 S St. Phillips Rd. | Evansville, IN 47712 Email: aschenk@tuff-jon.com | Website: www.tuff-jon.com

Road Ready

Please open the door to the Pumper garage and help choose the classiest truck of 2021

By Jim Kneiszel



It's that time of the year when we choose the cream of the crop from our 2021 monthly Classy Truck winners in Pumper magazine. And we could use your help bestowing this important recognition on one of your fellow septic service professionals.

Please take a moment to refresh your memory about the stable of new or refreshed rigs featured in the past 12 issues of the magazine. Then follow the instructions to cast a vote for your favorite at www.pumper.com/classy. Your votes will join the analysis of the team of Pumper judges to determine which truck will proudly carry the Classy Truck of the Year vinyl decal moving forward. **P**

CAST YOUR BALLOT TODAY!

Step 1. Look over the 12 Classy Trucks for 2021.

Step 2. Choose your favorite.

Step 3. Go online at www.pumper.com/classy and vote. (One vote per IP address allowed.)

ACT NOW!

The deadline for voting is **Wednesday, December 22.**

> JANUARY



New London County Septic & Excavation
Ledyard, Connecticut

Tim Willis added this blue and days-end gray 2007 Peterbilt 340 carrying an Adert Inc. 3,600-gallon steel tank and Masport Hydra 400 cfm pump. The rig is powered by a PACCAR PX-8 300 hp engine tied to an Eaton Fuller 10-speed transmission. Willis bought a used single-axle box truck and added a 20,000-pound pusher axle in-house. The truck is used for residential and commercial septic and grease-trap service.

> FEBRUARY



On-Site Sanitation
Mount Vernon, Ohio

Chad Sims added a Viper red 2020 Peterbilt 348 with a 4,200-gallon aluminum tank and National Vacuum Equipment 4310 blower built out by Amthor International. The truck is powered by a PACCAR PX9 370 hp engine mated to an Allison automatic transmission. Features include 34 marker lights (Betts Industries), four LED work lights and amber and white LED strobe lights. The truck is used for residential and commercial septic pumping.

> MARCH



Novak Backhoe LLP
Lankin, North Dakota

Terry Novak added a white 2012 Peterbilt 348 carrying a 3,300-gallon aluminum tank and PV750 pump from Presvac Systems. Power from the 8.9-liter PACCAR engine goes to a 13-speed Eaton Fuller transmission. The truck features a hoist and rear-opening door. The truck is used for residential, municipal and commercial pumping and car wash pits.

> APRIL



Rechel Septic Systems
McHenry, Illinois

Dave Rechel added a white and cherry red 2004 Mack Granite CV7 carrying a 3,200-gallon Imperial Industries steel tank and Battioni MEC 13500 489 cfm pump, with tank and accessories added by GPM Pump and Truck. The truck is powered by a 400 hp Mack engine tied to an Allison automatic transmission. It is used for residential septic service.

› MAY



A&T Septic and Excavating and J&J Pumping

Litchfield and Olivia, Minnesota

Aaron Thompson and Tim Kinney added a white 2019 Peterbilt 348 from FlowMark with a 4,000-gallon aluminum tank and National Vacuum Equipment 4307 blower. The truck is powered by a PACCAR PX-9 engine tied to a 10-speed Eaton Fuller transmission. The rig is used for residential and commercial pumping.

› JUNE



Bio-Liquid Waste Disposal

Antigonish, Nova Scotia

Francis Overmars has an all-red 2015 Western Star 4700SB built out by Vacutrux with a 3,602-gallon steel tank and 500 cfm Wal-lenstein pump. The truck is powered by a 600 hp Detroit DD13 engine married to a six-speed Allison automatic transmission. Features include a full-opening rear door, hoist, vibrator, pressure washer and safety strobe. It is used for residential, municipal and industrial pumping.

› JULY



Universal Vacuum Service

Hearne, Texas

Jimmie Deal added an American flag-themed 2021 Freightliner M2 built out by KaryMore with a 2,850-gallon aluminum tank and National Vacuum Equipment Challenger 887 vacuum pump. The truck is powered by a 350 hp L9 Cummins engine tied to an Allison automatic transmission. The truck has aluminum bed, wheels, fuel tank, three 20-inch manways and integrated tool-boxes. It is used for septic, grease and grit traps.

› AUGUST



BBS Septic & Environmental Service

Front Royal, Virginia

James Coleman refurbished a white 2004 Freightliner FL70 carrying a 2,000-gallon waste/100-gallon freshwater steel tank from Imperial Industries and a Jurup R260 pump. Coleman rebuilt the truck himself including refreshing a 240 hp 3126 C7 Cat engine and Eaton Fuller eight-speed transmission. He stripped and repainted the truck, added the graphics and reupholstered the seats. It is used for residential and commercial pumping.

› SEPTEMBER



Northstar Environmental Group

Gallatin, Tennessee

Owner Donnie Drayton added a white and blue 2020 Kenworth T880 carrying a 4,000-gallon steel tank and National Vacuum Equipment 4310 blower from Presvac Systems. The truck is powered by a Cummins X15 500 hp engine tied to an Eaton Fuller AutoShift 12-speed transmission. It is used for industrial services including used oil collection, cleaning sump pits, car wash pits and other shop drains.

› OCTOBER



Southern Comfort Portables

Carriere, Mississippi

Shannon and Zack Atkisson added a Radar Blue 2015 Kenworth T880 built out by Amthor International with a 5,000-gallon aluminum tank and a 510 cfm Jurup Chandler pump. The truck is powered by a PACCAR 585 hp engine tied to an Eaton Fuller 18-speed transmission. Features include aluminum wheels, stainless steel hose trays, and chrome horns and stacks. The truck is used for residential septic pumping and transport of portable sanitation waste.

› NOVEMBER



Advantage Septic Service

Manassas, Virginia

Owner Mike Lynn upgraded a red, white and blue 2012 Peterbilt 348 with a new 4,000-gallon steel tank and National Vacuum Equipment 866 Challenger pump and built out by 27th Trucks. The truck is powered by a PACCAR PX-8, 350 hp engine with power to the road from an Allison automatic transmission. The rig is used for residential and commercial septic pumping.

› DECEMBER



B&D Liquid Waste Hauling

Marshfield, Wisconsin

Dennis Oertel added a metallic blue and gloss white 2007 International 5900i Eagle Package truck built out by Imperial Industries with a 5,000-gallon steel tank and 400 CFM Masport pump. The rig is powered by a Cummins ISX 500 hp engine tied to a 13-speed Eaton transmission. The truck is used for residential and commercial waste, including grease traps, pumping public pools and cleaning up milk truck spills.

MAKE YOUR NEW RIG A CLASSY TRUCK!

Seeing your truck in the pages of *Pumper* is easy!

Step 1. Clean and detail your truck.

Step 2. Take a variety of photos.

Step 3. Send the photos to us, along with a detailed description of the truck and accessories, to editor@pumper.com.



VACUUM TECHNOLOGY



Pro-Vac Industrial Pumpout System Ideal for Indoor/Remote Jobs

For: grease trap service pumping, machine coolant pumping-cleaning, remote portable toilet pumping, marina vacuum pump out service, or any pumping and transfer of liquid waste



Made in USA
Since 1939



Pumps - 35 Thru 230 CFM
Vacuum (only) & Vacuum/Pressure



PowerPaks - Gas & Diesel Powered
Belt Drive & Direct Drive

Westmoor Ltd., Sherrill, NY • westmoorltd.com • orders@westmoorltd.com • 1-800-367-0972

Sell Pro-Pump and Make More \$\$\$!



ASK ABOUT
CURRENT
SPECIALS!

Make the most with Pro-Pump Products:

\$\$\$ Sell Pro-Pump® products to your customers as an option for septic remediation and for maintenance between your visits.



A Green
Product Your
Customers Love



Septic System Treatment • Bio-remediation Kits
Aerobic System Treatment • Absorption System Recovery
Odor Control • Solids Reduction • Drain & Grease Traps



Call Us Toll Free at 1-800-326-7867

Solving Problems, Naturally!
Ecological Laboratories INC. | www.propump.com
info@propump.com

We Have Money To Loan

NEW AND USED WASTEWATER EQUIPMENT

- Programs offer longer terms for older equipment
- We do start ups
- Seasonal Payment Programs Available
- Conserve your working capital. Keep existing credit lines intact, and enjoy the security of knowing financing is there when you need it. We offer loan and leasing plans tailored to individual needs.

100% FINANCING. NO DOWN PAYMENT.

If you are having difficulty getting the Credit you need call Jim Thomas.



JIM THOMAS
SINCE 1997

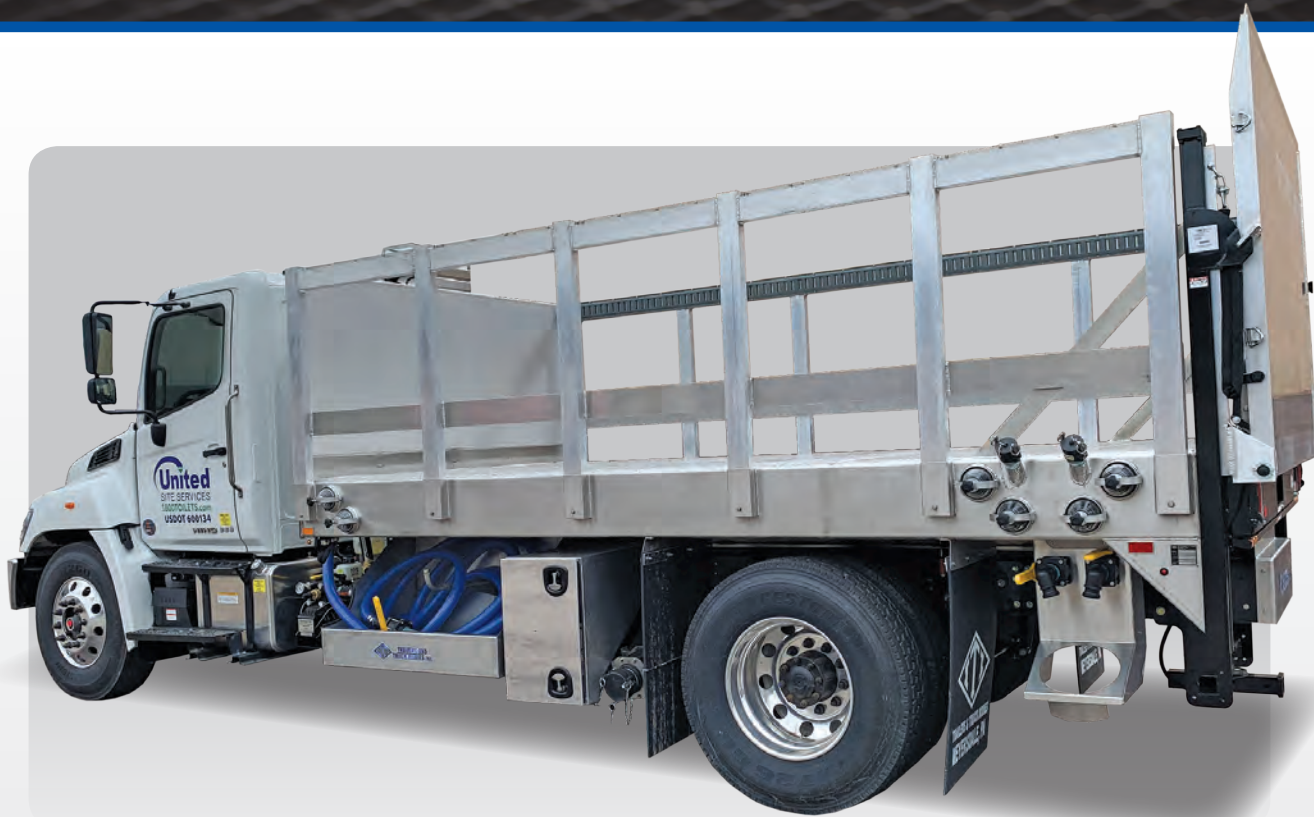
Toll-Free 877-333-4539
JimThomas@KeyCommercial.com

KEY COMMERCIAL CORP.
Commercial Equipment Financing
www.keycommercial.com



**TRAILERS AND
TRUCK BODIES**
INCORPORATED

**Custom Manufacturer of
Vacuum Trucks & Trailers**



5500 Gallon Stainless Steel Tank ◊ NVE 4307 Blower



5000 Gallon Carbon Steel Tank ◊ 607 NVE Pump

**We
Manufacture
& Service
What
We Sell.**

ASME Certified

Building DOT 407/412 Equipment



Stainless Vacuum
Trucks & Trailers



Grease Trap
Pumper Trucks



DOT 407 - 412
Cargo Tank Trailers



Portable
Restroom Trucks



Aluminum Vacuum
Trucks & Trailers



Carbon Steel Vacuum
Trucks & Trailers

To learn more about
ITI Trailers and Truck Bodies,
call **1-888-634-0080**
or visit
www.itimfg.com



Follow These Steps to Be Prepared When Disaster Strikes

Iowa's Becky and Tim Peltzer benefitted from cloud-based file backup and careful documentation of equipment and spending when fire took down their office

By Joan Koehne

Becky Peltzer just got home from work when she received an emergency phone call. She needed to get back to the office right away. Waste Solutions of Iowa was on fire. The company, based in Des Moines, Iowa, provides portable restrooms, commercial grease and interceptor cleaning, and residential and commercial roll-off container services in central Iowa.

Becky and Tim Peltzer, owners of WSI, never expected a catastrophe like this. The singlewide job trailer that served as their office was destroyed in a fire in April 2021. The Peltzers also lost three heated and air-conditioned restroom trailers and two flushable toilets. Thankfully, the fire didn't extend to the shop and the yard; other restrooms, trucks, trailers and equipment were spared.

A fire or other type of catastrophic event throws business operations into chaos. Stress goes through the roof as the company deals with the aftermath. Preparing for catastrophes before they occur makes disaster recovery easier.

WSI took a number of proactive steps so that the company could pick up and move on quickly after the fire. Most important, WSI had critical operating systems in place, limiting the impact of business disruptions. For example, the company used cloud-based bookkeeping software and a cloud-based dispatching and routing system with a customer-database component.

"The next day, we bought new laptops and the office was running as if nothing happened," Tim says.

They forwarded their business lines to their cellphones, and customers saw no disruptions. All the employees came to work as usual, while office personnel worked from the Peltzers' home until moving into a rented office space about a week after the fire.

The fire started when a person at a neighboring property cut down a tree, causing a power line to fall on the trailer. After Becky arrived at the fire scene, she began taking photos.

"Do not rely on others," she advises. She documented as much as she could with her camera on the night of the fire. Her foresight was a godsend. "By the next morning, everything was cleaned up," she says.

➤ Finalizing an insurance settlement is a lengthy process ... requiring a lot of back-and-forth with the insurance company and mounds of patience. A positive mindset helps to lighten the mood, so you can calmly navigate the setbacks and challenges.

Document everything

The Peltzers also recorded the names and phone numbers of the fire chief and investigators. Additionally, Tim talked with neighbors and eyewitnesses, collected their contact information and wrote down their comments. Becky and Tim provided all of this information to the insurance company.

In addition to the photos from the fire, WSI was lucky to have photos from the inside of the office before the fire. They had recently rearranged the desks and took photos of the new workspaces. They shared these photos with the insurance company and referred to them often.

"We take for granted the power of the cellphone in our hands," Tim says. "Take photos of your office once a month."

"We're not thinking about what's in the closet, the drawers, the layout of the office and what's on our desks," Becky says.

In addition to taking office photos, they advise taking photos or videos of trucks, equipment and inventory. The company owns about 2,000 restrooms, five service trucks and two pickup and delivery trucks.

"Keep an asset list," Becky says. WSI keeps essential papers, like truck titles, in a fireproof safe.

"Document. Document. Document," Tim says.

Whenever he speaks with investigators and insurance representatives, Tim takes notes to refer to later. His notes include the date, people he talked with, the subject of the conversation and any follow-up that is planned. He also records phone conversations pertaining to the fire. Everything is stored in Microsoft OneNote, so he has one place to find photos, emails and recorded conversations.

"It helps because you're constantly getting passed from investigator to investigator and insurance agent to insurance agent. I don't have to recreate what they need every time," he says.

“You are your own advocate,” Becky says. Even though their insurance agent had visited their office and used their services, he wasn’t aware of all their products and their uses. Following the fire, the Peltzers spent several days with their agent correcting deficiencies in their policy.

From the moment of the disaster, WSI used a dedicated credit card for purchases and saved all receipts. An ongoing frustration for the Peltzers is a shortage of equipment they desperately want to replace. Plus, the replacement cost is up to double what they originally paid. Months after the fire, WSI was still trying to replace its restroom trailers. Becky and Tim kept records of the replacement costs, plus the income lost from not having these restrooms available.

Along with the business challenges after a disaster, there is an emotional toll as well. Losing their office was devastating, and dealing with the aftermath was stressful. Instead of feeling sorry for themselves, the Peltzers forged ahead.

“You basically just pick up and move on,” Becky says. “We just made the best of it.”

“If you’re going to fall, fall forward and do the next right thing,” Tim says.

Becky and Tim kept their attitude positive, knowing that their employees looked to them for leadership and direction after the fire. They remained calm when interacting with their staff, knowing that hysteria wouldn’t help anyone deal with the loss.

Finalizing an insurance settlement is a lengthy process, expected to last 12-18 months for WSI, requiring a lot of back and forth with the insurance company and mounds of patience. Becky recommends not bearing every burden yourself.

“Let people know when you need help. They want to help and support you.”

Craft a plan

A solid emergency preparation plan can help companies pick up the pieces and recover quickly like the Peltzers did.

A major element of an emergency preparation plan is to identify risks, like floods, hurricanes or tornadoes, that may be likely to occur in your area. Companies often have advance warning of pending weather emergencies but WSI of course had no indication that a fire would occur.

You can still prepare by correcting fire and safety hazards. Regularly check your fire prevention and safety systems to be sure they’re operating correctly.

Create an evacuation plan to show exits, evacuation routes and meeting places to gather to make sure everyone evacuated safely. Sometimes it’s safer to shelter in place, and staff members should be ready to go to their assigned shelter at a moment’s notice. An emergency kit comes in handy. Equip the kit with bottled water, snacks, a flashlight and batteries, first aid supplies and a battery-powered radio.

WSI used cloud-based storage, which provided easy access to records and business operations the day after the fire. Businesses not using the cloud should create a backup of critical data and programs, then store the backup files in an offsite location. Vital business documents should be stored in a fireproof safe.

By proactively preparing for a catastrophe, companies who experience disasters face less disruption to day-to-day business. To prepare, write an emergency preparedness plan and asset list, protect critical documents and take photographs of the office, shop and yard. Document the aftermath of a disaster with photos and notes, and keep good records of the investigation and purchases made after the event. A successful recovery from a disaster takes time and patience. A positive mindset helps to lighten the mood, so you can calmly navigate the setbacks and challenges.

“Stay grateful and positive,” Becky says. “Know it’s going to be OK.” **P**

Tank World Corp

ALL MAJOR BRANDS IN STOCK AND READY TO BUILD

WISHING A
MERRY
CHRISTMAS
& HAPPY NEW YEAR



Financing Available



**We build Vacuum trucks, Septic trucks,
Porta Potty trucks, and Body swaps.**

We can do Steel, Stainless Steel and Aluminum.

NOT JUST BUILDING TRUCKS BUT BUILDING RELATIONSHIPS

Parts and Accessories In Stock

ASME & R stamp accredited

UL 142

www.tankworldaz.com

12001 W. Peoria Ave
El Mirage, AZ 85335

Jerry's cell 623-680-2037
tank.jerry1@gmail.com

Office 623-536-1199
Fax 623-935-4514
service@tankworldaz.com



wwett[™]22

Water & Wastewater Equipment, Treatment & Transport Show

REGISTER NOW at
wwettshow.com

→ Use Promo Code **AD10**

Live in Indy
INDIANA
Convention Center
February
21-24



Where Business Flows

The WWETT Show is the largest event dedicated to wastewater and environmental service professionals with an Expo Hall featuring 500+ exhibitors displaying in over 350,000 square feet of exhibit space. **Want to see how a piece of equipment works?** Don't miss the Exhibitor Demonstrations taking place in the Expo Hall. For even more action, get over to **WWETT Live! at Lucas Oil Stadium**. See the newest trucks and latest equipment, all running and "in action"!

If you're shopping for your business, make sure WWETT Show 2022 is on your itinerary.

Conference **February 21-24, 2022** | Expo Hall **February 22-24, 2022**

LEARN MORE at wwettshow.com

   @wwettshow

PROUD MEMBER OF:



Wallenstein vacuum pumps

ENGINE DRIVES

The **WALLENSTEIN** family of Portable Sanitation Pumps are the most **rugged, dependable** and **longest lasting** vacuum pumps available today.

since
1969

151 80 CFM



5.5 or 6.5 HP
Honda Engine

11 HP
Honda Engine

202 115 CFM



13 HP
Honda Engine

302 165 CFM



EM elmira
machine
industries inc.

1.800.801.6663
wallenstein.com

HANDWASH STATIONS

MANUFACTURED BY MCKEE TECHNOLOGIES

EXPLORER

Explore the finest
in sanitation...

...when SANITATION counts

CLASSIC 8 SINK UNIT



Faucets: Metered water-saving
Fresh Water: 225 US gallon,
horizontal poly tank
Grey Water: 250 US gallon,
galvanized holding tank, 2" valve
Dispensers: (4) Paper towel, (4) soap

Counter Tops: Polished stainless
steel with (8) sinks, 12" diameter
Finish: Epoxy primer with
polyurethane top coat
Water Heater: 5 US gallon, 110 V
Water Pump: 110 V On-demand



The galvanized grey-water tank is horizontally mounted inside the chassis with a 2" discharge port at the rear. All built onto a commercial grade trailer chassis for easy towing.

1.866.457.5425
mckee technologies.com

pickuptanx
INDEPENDENT • DRIVE

Standard Sanitation
300, 450, 650
& 840 USG

All VACUTRUX sanitation systems are built with one Major commonality... They are built to last! From the bulletproof design of the Wally VP to Hot Dip Galvanizing, these systems will not let you down.

Only
From...

vacutrux



1.800.305.4305
vacutrux.com

Powered by
Wallenstein
vacuum pumps



Kate Zabriskie
Contributor

Kate Zabriskie is president of Business Training Works, Inc., a Maryland-based talent development firm. Reach her at www.businesstrainingworks.com.

When's the Last Time You Scheduled a Meeting With Employees?

Regular one-on-one talks with crew members creates a better work environment for everyone

By Kate Zabriskie

There are only two of us in my department. Why should I bother with a formal meeting? We sit right across from each other.

I tried meeting individually with my direct reports, but they had nothing to talk about. Besides, we're all adults. We know what we're supposed to be doing at work.

Without trying too hard, it's easy for managers to compile a long list of reasons not to meet with the people they supervise. And guess what? The volume of reasons does not outweigh the value and importance of a regularly scheduled exchanges with a direct report.

If used correctly, over time managers and employees can enjoy many benefits by meeting one on one.

1. **Visible appreciation:** Time is currency. If managers carve out time for their people and are prepared when they meet, they show they value employees.
2. **Better thinking:** Regular one-on-one meetings give managers and employees space to step away from the urgent and immediate and to think more holistically and strategically about work, goals and development opportunities.
3. **Stronger results:** Accountability tends to improve when people have an opportunity or a requirement to report on their progress.

TAILOR THE MEETING

Once a manager has bought into the value of one-on-one meetings, the next step is to execute them in a way that works for the manager and the employee. Good one-on-one meetings are not one-size-fits-all activities. That said, there are a few guidelines that can make a one-on-one meeting successful.

1. **Pick a schedule and stick to it.** One-on-ones shouldn't regularly disappear from the calendar simply because something else suddenly comes up.

➤ It's important for managers to remember they already know the questions. The employee is hearing them for the first time and may need some time to digest and think about what's being asked.

2. **Choose a frequency that makes sense.** For some people, meeting once a month may be enough. For others, meeting weekly may be more appropriate. Every relationship is different. Furthermore, circumstances evolve. Depending on what's happening inside and outside of the business, an employee's needs could change drastically. Meeting frequency should be looked at from time to time. If the rate of meetings is correct, managers and employees should not routinely find themselves with no reason to meet.
3. **Follow a written agenda.** Well-run one-on-one meetings are not free-for-all conversations. They follow an agenda just as any other good meeting does. A meeting agenda might include such topics as current projects, progress on yearly development goals, current challenges and so forth.
4. **Put employees in the driver's seat by having them manage and document the agenda.** As a manager, you may create the initial agenda format. But once you do, your employees should take ownership of the documents associated with their one-on-one meetings.

OVERCOME OBSTACLES

One-on-one meetings rarely go from nonexistent or dysfunctional to perfect overnight. For that reason, managers should prepare to overcome a variety of obstacles.

TANKS & TRUCKS

Thanks to Norup Trenching, Byron, IL



NVE 4310 Blower Package

CUSTOM FLOATER TRUCKS



Dry or Liquid Nutrient



Sludge and Bio-Solids

Ask for our latest catalog!



SLIDE-INS & TRAILER PACKAGES

Shown with optional galvanizing



ST Series Complete Tank Kits Available



VAXTEEL VACUUM TANKS LMT

READY-TO-SHIP

ENDURA PAINT
Paint That OUTLASTS & OUTPERFORMS

Septic and Grease

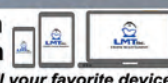
ST Series Gallon Capacities: 1800 - 2300 - 2500 - 3500



Choose LMT to build your custom vacuum equipment
EXPERIENCED VACUUM PUMP SALES & SERVICE



www.lmtmfg.com
info@lmtmfg.com



Format Friendly over all your favorite devices

Obstacle 1: Employees question the new meeting.

Solution: Reduce the surprise factor. If a manager has never held one-on-one meetings, they might come as a surprise to employees. To avoid feelings of uncertainty, confusion, or worse, mention the idea before loading the calendar with unexpected surprises. "This year, I would like to focus more on individual development. Within the next week or two, please expect to see a meeting request from me. I believe we will all benefit if I spend time with each of you individually at regularly scheduled intervals. How often we will meet will depend on each of your needs and what we decide together."

Obstacle 2: An employee doesn't take charge of the meeting.

Solution: Show them how. A good agenda can go a long way toward making the conversation flow. Although employees should have ultimate responsibility for keeping the agenda, this may take time. In the beginning, managers may have to explain what they want to see. "For our first few meetings, I'll prepare the agenda. Once we've found our groove, my plan is to turn it over to you to own. This means you'll add to it between meetings and bring a copy for you and me when we meet."

Obstacle 3: An employee gives short or general answers to questions.

Solution: Get specific. The more focused a manager's questions are, the better the conversation tends to be. For example, instead of asking, "What are you working on?" a manager might say, "Tell me about the project that is going best right now and why that is."

Obstacle 4: An employee seems unresponsive.

Solution: Leverage silence. When managers don't get immediate feedback, they sometimes mistake silence for non-responsiveness. It's important for managers to remember they already know the questions. The employee is hearing them for the first time and may need some time to digest and think about what's being asked. Instead of rephrasing questions that don't produce an immediate answer, managers need to get comfortable with letting silence sit in the room.

KEEP ON TRACK

Like anything, one-on-one meetings can get stale. It's important to look at the format and frequency from time to time and to solicit feedback regarding what's working and what isn't.

If you've fallen out of the habit of holding regular one-on-one meetings or if you're not getting all you could from them, now is the time to take another look. After all, can you really afford not to? **P**

Join Us Online



Facebook.com/PumperMag



Twitter.com/PumperMag



LinkedIn.com/company/pumper-magazine

Happy Holidays

TSI CALL TODAY FOR SAVINGS
 Professionals in the Vacuum Tank & Trailer Industry
 866-720-4999 www.tankservicesinc.com

Jerry Blake
 Cranston, RI
 jerry@tankservicesinc.com
 Cell: 401-688-0043

Amanda Hensarling
 Baytown, TX
 amanda@tankservicesinc.com
 Cell: 401-339-9992



2021 T370 Kenworth GREASE TRUCK

300HP, Allison Auto, 33,000 G.V.W.R) 1800 gallon stainless steel (ITI) tank, NVE 607 ProMax package, heat collars (heat through tank), heated cabinet for ProVac unit w/hydraulic lift, Hannay hose reel w/100' 2" hose in heated cabinet.



2020 Chevy 5500 | 4 x 4, diesel 1500 RVT, NVE 304 engine package.
CALL FOR PRICING



2021 Kenworth T880 | 20/20/46-Ultra-Shift, 200/4000/1400 aluminum decant tank, NVE 4310 blower package, strobes, cameras
CALL FOR PRICING



2021 Kenworth T880 | 20/20/46, Ultra-Shift, NVE 4310, CAT 660 jetter package, LED lights, LED strobes, 4-camera package, NAV system, alum. tank
CALL FOR PRICING



7000 - 9000 Gal. Aluminum Tri-Axle Trailers | Air ride suspension (tri-axle), pump platform, bright finish, LED lights, Betts valves.



2018 9000 Gallon Tandem Trailer | 93,000 GVWR transport (aluminum tank insulated stainless steel wrapped) 6" discharge



2020 T880 KW Ultra-Shift | 485HP, 20/20/46 ready for a tank (4) in stock

NVE
 NEW ENGLAND DISTRIBUTOR

Pumps For Sale
 NVE 866 and 4307 Packages Available



SHINE ON Products From
GTI
 CHEM-TECH INDUSTRIES



Need Equipment? Contact Us We Can Get It.



Belt filter presses featuring innovative features that provide high performance in a compact high value package.



Bright Technologies offers complete Belt Filter Press dewatering systems that are skid or trailer mounted. We design and manufacture the skid equipment package for high throughput, low maintenance, superior cake solids and ease of operation.



Contact Us Today!
800-253-0532

127 N. Water St., Hopkins, MI 49328

www.brightbeltpress.com

Celebrate the spirit of the season.



All best wishes from your friends at COLE Publishing

NORWECO, INC.

YOUR BUSINESS PARTNER

norweco®

*Engineering the future of water
and wastewater treatment*



PARTNER WITH
NORWECO



OUTSTANDING TREATMENT RESULTS



QUICK & EASY INSTALLATION & SERVICE



KNOWLEDGEABLE SUPPORT TEAM

GROW YOUR BUSINESS

Norweco is dedicated to product innovation, customer support and industry growth. Performance certified products include nitrogen treatment, phosphorus removal, water reuse, solar technology, UV disinfection and chemical products.

800.667.9326

www.norweco.com

email@norweco.com

**Visit Team Pink at
The WWETT Show**



Delaware County Clamps Down on Onsite Developments

By David Steinkraus

After a couple of years of flirting with the issue, the New Castle County Council in Delaware imposed a permanent moratorium for large developments built with septic systems.

The vote came on Aug. 31, after several hours of public comments and debate, reported Delaware Public Media. New Castle County covers the northern Delaware, including the city of Wilmington and the western shore of the Delaware River.

Mostly affected is the rapidly growing and rural southern portion of the county. The moratorium forbids the development of more than five parcels on the same septic system.

Advocates of the ban cited the risk to water quality from onsite systems, and County Executive Matt Meyer has promoted the ban as part of what he calls his environmentally friendly Green Agenda. Opponents cited the risk to farmland value and the loss of potential retirement income for farmers.

Originally, the moratorium was supposed to be temporary so county planners have time to develop a master plan for that section of the county. In January 2020, the council extended the moratorium for 18 months after pressure from farmers prevented a permanent ban on septic systems. A nonprofit that promotes responsible economic policy also praised the delay because it would give people time to think about the issue.

The population in southern New Castle County is projected to increase by more than 8,000 people by 2050, says an advocacy sheet produced by the county government.

However, noted the *Delaware Business Times*, there is no timeline for providing sewer infrastructure to serve people in the area. Without that, developers turned to proposals for subdivisions that would rely on onsite systems.

Massachusetts

A Falmouth committee is looking at requiring a 300-foot buffer zone around water bodies in which advanced treatment units would be required.

Nitrogen is the pollutant of concern to the Falmouth Water Quality Committee and is endangering the health of several ponds in the municipality. Of 12 estuaries, only two could meet total maximum daily load limits using ATUs within 300 feet of the shore, consultant Kristen Rathjen of Science Wares told the committee, according to the *Falmouth Enterprise*. More examination is needed for other water bodies, she said.

Mashpee will require inspection and pumping of septic systems within 300 feet of Santuit Pond.

About half of the homes near the pond have not had their systems pumped in the last 10 years, Glen Harrington, the town's health agent, told the Board of Selectmen in August. There are 121 systems within that 300-foot border. Excess nitrogen and phosphorus have caused cyanobacteria blooms in the pond, reported the *Cape Cod Times*.

Mashpee and nearby Barnstable have been sued by the Conservation Law Foundation over water pollution. The suit claims the municipalities have known for decades that nutrient pollution was the cause of declining water quality and have violated their own regulations by allowing water quality deterioration to continue.

New York

Federal pandemic funds will be used to double onsite grants to homeowners in Nassau County, said County Executive Laura Curran. State money of \$2 million will be matched with another \$2 million from the federal American Rescue Plan.

Applicants to replace or repair failing septic systems and cesspools will be eligible for up to \$20,000 instead of \$10,000, reported *Newsday*. About 90% of the county, which is on Long Island and abuts New York City, has municipal sewer service, but thousands of homes and small businesses along the county's north shore rely on some type of onsite system.

Another phase of New York's septic system replacement program is open for residents of Jefferson County. There is no additional money, but more people will be eligible.

Properties on the St. Lawrence River and Guffin Bay on Lake Ontario were added to the program after reports suggested wastewater from failing onsite system was leaking into those bodies of water, reported the *Watertown Daily Times*. The program pays half the cost of replacing failing systems, up to a maximum of \$5,000, for properties within 250 feet of the shore.

(continued)



- George, VP of Sales 954-558-0816
- Roger, Regional Sales Manager 305-409-8603
- RJ, Inside Sales & Parts Manager 786-328-9330

71 Years in Business!

In Production
2022 Mack MD6, 2000 gal. alum tank, Fruitland 500, 36" tool box. **\$118K**

In Stock
2022 389 Peterbilt, Cummins 455 hp. auto, 66K, 4200 alum tank, NVE 4307 Blower, 36" alum tool box. **\$225K Plus FET**

In Production
2022 Mack MD6, 2000 gal. alum tank, Masport pump, 36" tool box. **\$118K**

1 In Production
2022 Mack MD7, Cummins 300 hp. Allison trans, 2500 gal. alum or steel tank, choice of pumps or blower. **Call For Price**

2 In Production
2022 Intl HV, Cummins 350 hp ISL, Allison auto, 4200 alum tank or 4000 CS tank same price, Fruitland RCF 870 pump 510 cfm, 36" alum toolbox. **\$162K Plus FET**

2 In Production
2022 Intl HV, Cummins 350 hp ISL, Allison auto, 60k GVWR. 4200 alum tank or 4000 CS tank same price, Masport Titan pump 407 cfm, 36" alum toolbox. **\$162K Plus FET**

Wishing All Our Loyal Customers and New Customers a Merry Christmas and a Prosperous New Year

Buy Yourself A New Truck For Christmas

Michigan

In the department of the more things change, the more they stay the same, we offer this item posted by the *Manistee News Advocate* and taken from its Aug. 12, 1961, edition:

"A large audience of 130 people attended a public meeting of the Onekama village council last night at Farr Center to discuss the pollution of Portage Lake near the village area caused primarily by inefficient outlets of septic tanks. The meeting and large turnout was prompted by the posting of pollution signs at the beach at Village Park on Friday morning due to the high bacteria count of water samples taken there." **P**



SOCIALLY ACCEPTED



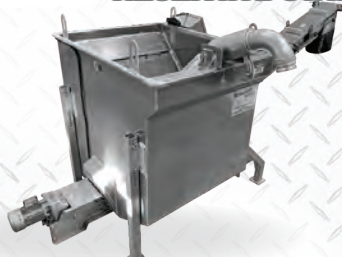
facebook.com/PumperMag
twitter.com/PumperMag
youtube.com/PumperMagazine
linkedin.com/company/pumper-magazine

MEGA SCREEN 600 & 800 RECEIVING STATIONS



- Largest Receiving Stations On The Market Mega 800 51 Sq Ft, Mega 600 40.5 Sq Ft
- Offload At 1000-800 GPM Through Dual Fan Spreaders 4", 6" or 8" Inlet
- 3/8" Gap SS Bars Meet Ecology 503 Regs
- Use For Industrial Truck Clean-out
- Offload 2 Trucks At Once
- 7' Trash Chute Bolts On Either Side
- Septic & Grease Receiving And Lift Station Trash

NEW TRASH MASTER 400 RECEIVING STATION



Simplest Auto Screen In The Industry

- Uses Gravity To Separate Trash From Flow Screen
- 4" Power Offload From Truck 500 GPM Patent Pending
- 3/8" Gap SS Bars Meet Ecology 503 Regs
- Dewateres Trash - VFD 5-30 RPM
- Heavy Duty Shaftless Screw Moves Trash To Receptacle

MAXI SCREEN 400 PORTABLE SEPTIC RECEIVING STATIONS



Aluminum & Stainless Construction

- 3/8" Gap SS Bars Meet Ecology 503 Regs
- Screens That Really Work
- No Moving Parts
- Gravity Off-Load At 500 GPM
- NEW 4' Trash Extension Puts Trash Directly Into Dumpster

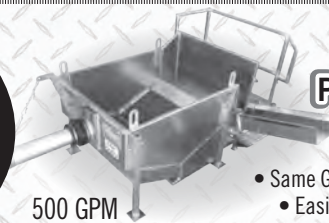
Patented Dual Screen Design

NEW MICRO SCREEN 400 PORTABLE RECEIVING STATION



- Place Over Frac Tank Or In Ground Storage Tank
- Bolts Securely To Manhole Ring
- 3/8" Gap Bars, 8 Sq Ft Screen Area
- Sealed Lockable Hinged Cover • Fast 4" Offload
- Lightweight - Portable • Small Footprint

OUR SYSTEMS MEET ECOLOGY 503S



MINI SCREEN 400 PORTABLE RECEIVING STATION

- Same Great Design, Ships Truck Freight
- Easily Fits In Pickup for Transport
- Small Footprint, Big Results

500 GPM
Patented Dual Screen Design

TRIPOD LID & PUMP LIFTER



- Folds To Fit On Hose Deck
- Max Load 600 lbs
- Saves Back Injuries
- Auto Brake Winch
- Only Weighs 28 lbs
- Heavy-duty Aluminum Construction
- Available In 4-5-6 Ft Models
- Lifts Stubborn Tapered Lids

GRIT ELIMINATOR



- Removes Grit From Flow Stream
- Keeps Onsite Storage Grit Free
- Available in 18, 32, 64, 96 Cu Ft Grit Capacity

SHAFT DRIVE PUMPS & AGITATORS



- Move Septic And Grease Interceptor Waste With Ease From Underground Storage Tanks
- Great For Transferring To Land Application Site
- Mix While Dewatering
- Handles Sand Grit And Slurry Type Materials
- Pit Depths Of 3-12 Ft, 3333 Up To 500 GPM, 4444 Up To 1580 GPM

Patz DISTRIBUTOR

TRUCK TOW BEHIND PORTASCREEN SPREADER



- Portable Event Screening
- Doubles As Screener Spreader & Mobile Septic Receiving Station
- Clean Up Your Land Application Site
- Never Hand Pick Trash Again

SHOW US YOURS

Do you have a truck with WOW appeal?
Show it off to *Pumper* readers!

Send photos of your truck after it has been lettered with your company name. Any industry-related truck is acceptable. Please limit your submission to one truck only.

Your Classy Truck submission must include your name, company name, mailing address, phone number, and details about the truck including tank size, cab/chassis information, pump information, the company that built the truck and any other details you consider important. In particular, tell us what features of the truck help make your work life more efficient and more profitable.

Email your materials to editor@pumper.com.
We look forward to hearing from you!

LANE'S VACUUM TANK, INC.

**BUILT BY
FOR PUMPER
PUMPER**



2021 Dodge, International, or Ford

950/300 Aluminum Tank; Gas or Diesel; 4x2 or 4x4

Call for Price & Availability

- 6 Hauler
 - 10 Hauler
 - 12 Hauler
 - 14 Hauler
 - 16 Hauler
 - 18 Hauler
 - 20 Hauler
- Call for Pricing



Toilet Transport Trailers



25" Off the Ground. 13" Tires.
Spare Tire. Adjustable Hitch.
3500 Pound Axles with Brakes.
I Beam Fold Up On Rear
for Handicap Units

13" Tires • 25" High

Used trailers also for sale

SLIDE-IN UNITS & USED TRUCKS AVAILABLE / MASPORT, JUROP & CONDÉ VACUUM PUMPS

All Brands and Sizes of Aluminum & Steel Tanks and Trucks are Available

800.592.3308 • 270.527.9945 RODNEY LANE'S CELL 270.832.3793 WWW.LANESMOBILEJOHN.COM



DEWATERING

Dewatering Unit • Polymer Injection • Sludge Pump
Working Platform • Polymer Sales and Testing

- » Pass the paint filter test in 24 hours
- » No waiting, Equipment is in stock
- » Visitors welcome at our dewatering facilities

We do one thing to perfection —
Dewater Liquid Waste!



**Debris
Screener**



AQUA-Zyme Disposal Systems

Call us at (979) 245-5656
zymme@aqua-zyme.com
www.aqua-zyme.com

**FINANCING
AVAILABLE**



Jim Anderson, Ph.D.
Contributor

Jim Anderson, Ph.D., is an emeritus professor at the University of Minnesota Department of Soil, Water and Climate. He works with the National Association of Wastewater Technicians and is a recipient of the pumping industry's Ralph Macchio Lifetime Achievement Award. Send Anderson questions about septic system maintenance and operation by email to editor@pumper.com.

Worry About Water Infiltration So You Don't Worry About Root Intrusion

When chasing down root problems in a septic system, be sure to check for pipe damage and all pipe-and-tank connection points

By Jim Anderson, Ph.D.

A published column invariably leads to either additional questions related to the topic or comments that are especially pertinent to the discussion. For example, a reader sent in a question about roots getting into their chamber system and plugging and clogging all lines. They wondered if taking out the offending tree would solve their problem.

The answer is clogging will be a continual problem until the reason for root penetration into the system is identified and solved. Taking out the water-loving tree — in Minnesota this is most often a willow, white pine or spruce; in southern states palm trees is certainly part of the solution — but a watertight system is also a root-tight system.

Typically, roots will not directly penetrate into trench media whether rock, chambers or other acceptable media. When a trench is standing empty, it should be dry and since roots are in search of water and nutrients, they will not enter into void space because there is nothing there.

WATER ATTRACTS ROOTS

Periodic water indicates another problem with the system, such as being too close or into the seasonal water table where the trench is acting as a drain. If effluent is ponded in the trench, sewage is anaerobic (without oxygen) and the roots will congregate around the outside of the trench where they can obtain water and nutrients in the presence of oxygen once the biomat is established.

There are several other reasons and locations that can lead to roots clogging parts of the system. Locations where piping enters or leaves tanks, distribution boxes or sewage tanks should be checked. Running a camera through a cleanout or from the inlet or outlet of a tank can identify if piping is watertight or if there are breaks or areas where roots are penetrating.

A poor glue job at pipe joints can also lead to problems. Several years ago I was working on a mound demonstration and the installer indicated the pipes in the distribution system had been glued and it was ready to accept water. Fortunately, we turned the pump on to see what kind of distribution we had before we covered everything up only to see water coming out of each pipe joint instead of the perforations!

This was due to the lack of understanding by the technician that pipe gluing with the adhesive they used was a two-step process. Each joint separated when water was run through the system. This can easily happen

➤ Heavy equipment, trucks or tractors passing over the area could damage shallow pipes, even when properly bedded. It is important to talk with the homeowner about proper care and management of their system.

and something that is taken for granted because everyone knows how to glue pipe. It is the reason pipe gluing is still a topic in basic training workshops I teach.

Other activities can cause piping to not be watertight. During backfill of the system pipes can become damaged and cracked resulting in small leaks and providing locations where roots can enter the piping. Often this cracking can occur near tanks or distribution boxes where piping into or out of the device is not properly bedded and supported. This can occur after installation due to differential settling around the tank.

EDUCATE HOMEOWNERS

Pipes can also be broken or cracked due to homeowner activities after installation. Sewage treatment systems should be protected from vehicle traffic. Heavy equipment, trucks or tractors passing over the area could damage shallow pipes, even when properly bedded. It is important to talk with the homeowner about proper care and management of their system to avoid these issues.

Other common locations for systems to not be water or root tight are at pipe penetrations into sewage tanks, distribution boxes or other tanks or boxes for additional pretreatment such as peat, sand or media filters.

In sewage tanks, obvious problem locations are the inlet and outlet, the top seam around the cover of tank and any middle seams. Inlet and outlet penetrations must be properly sealed. Some rigid or plastic seals and any seal formed with mortar or mastic may be stressed during backfill and will likely leak and allow root penetration. Any attempt at bonding wet mortar to dry concrete or PVC pipe is bound to fail, allowing root



Wilson, North Carolina
252-206-1641
www.integrity-tank.com

Backed by more than 85 years of combined experience in custom tank building



- Custom builds include:**
- Septic/ Grease/ Industrial Waste
 - 200 - 6000 Gallons
 - Portable Restroom Service Trucks
 - Aluminum/Steel/Stainless
- Additional Services:**
- Vacuum pump repairs, conversions, and refurbis

Integrity Tank where quality and service exceed expectations

CONTACT CHAD DAVIS for QUOTES at 252-450-9168

Odor Problems

Septic odors stop with SWEET AIR™ FILTERING DEVICE

— THE ORIGINAL —

— TUF-TITE, Inc. —
800-382-7009 www.tuf-tite.com

penetration. In the past bituminous seal, mastic or concrete grout have been used with varying degrees of success.

The best way to provide watertightness is to use flexible gaskets cast in place at the time of tank manufacture. Rubber seals are most desirable because they are flexible and will stay sealed during backfilling and settling. If cast at time of manufacture, these gaskets and boots must be protected during installation so they are not damaged and become ineffective.

SEAMS LIKE A PROBLEM

Seams are typically at the top of the tank or in the middle if a tank is constructed in two pieces. A butyl rubber or asphalt-based sealant is applied to the seam before connection. In center-seamed tanks, a tongue and groove connection along with a sealant and then after connection use of a butyl rubber wrap around the outside of the tank ensures watertightness.

Similarly, seams at the top of distribution or drop boxes, as well as pipe penetration locations, must be properly sealed. Drop and distribution boxes typically have the pipe penetration gaskets installed at time of manufacture. Care must be taken during installation to cut these gaskets, so they provide a tight, flexible fit. Using similar rubber or asphalt mastics for seam connections (usually at the top) may be necessary and are effective.

Remember a watertight system is a root-tight system! **P**

Check out more articles and informative stories at:

pumper.com

MASPORT

VACUUM PUMP SYSTEMS

Get the Pump that Sets the Industry Standard!

HXL2
75 CFM
For 750 Gallon Tanks

HXL3
112 CFM
For 1000 Gallon Tanks

HXL4
165 CFM
For 1500 Gallon Tanks

HXL75
230 CFM
For 2500 Gallon Tanks

VIPER
350 CFM
For 4000 Gallon Tanks

TITAN
407 CFM
For 4000 Gallon Tanks

HYDRA
407 CFM
For 4000 Gallon Tanks

A Solution For Every Scenario!

1-800-228-4510 | cs@masportpump.com

www.MasportPump.com



2022 4700SB, L9-360 HP, 3000RDS Allison Auto., 18K FA/40K RA, 4,000 Gallon Alum. Tank, All Alum. Wheels, Available w/4307 or 4310 NVE Blowers. Units also Available w/4200 or 5000-Gal. Set-Ups.



2007 VHD200, 365 HP D12, 8LL Trans., Full Lockers, 482K Mi., 2015 - 5000-Gal. Steel Tank, Moro PM80W 425 CFM Liquid Cooled Pump.



Call 608-438-4816

See our entire inventory at truckcountry.com

TRUCK SALES | EXPERT SERVICE | PARTS | FINANCING



DEWATERING - IT'S A PIECE OF CAKE!

Let ParkProcess supply you with the most economical solutions for dewatering septage and grease trap waste. Choose from a wide range of models and sizes for the right equipment to meet your needs.



BIG TIPPER



THE BIG ROLLING TIPPER



POLYCAT



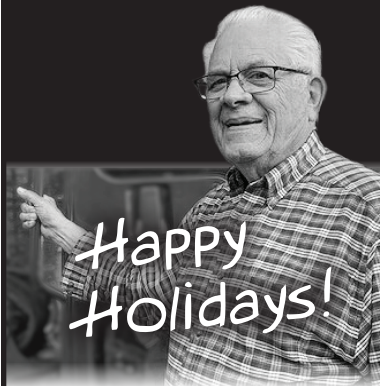
SLUDGE KING

855.511.PARK
www.ParkProcess.com

\$15,000-\$250,000

ONLY NEED A CREDIT APPLICATION!

No one makes it easier!



For more than 42 years, Gerry Oestreich has been a trusted name in new and used equipment financing.

- New Or Used Trucks
- Portable Toilets
- Pressure Washers
- Trailers
- Cameras
- Jetters and more ...



Equipping Businesses for Less -
Call Gerry @ 518-857-5206
Today To Learn More!
ABCLeasingNY@gmail.com

Visit Our New Website: www.abclease.net

MERRY

Christmas

*Dashing through the snow,
Pumping pots along the way,
When folks have to go,
Your potties save the day!*

*Brine and blue you bring,
Cleaning units right
When eggnog flows,
they'll thank the PROS
For porta-pots tonight.*

To all our industry friends—
wishing you health & happiness
this holiday season.

From your friends at



800.338.3155

910.371.2242

www.walex.com

info@walex.com



Pump Chamber Setbacks Would Help Preserve Canada's Clean Inland Waters

A member of the Ontario Onsite Wastewater Association promotes a regulation that would protect an important resource



In Snapshot, we talk to a member of a state, provincial or national trade association in the decentralized wastewater industry. This time we visit a member of the Ontario Onsite Wastewater Association.

Name and title or job description: Danielle Ward, onsite wastewater specialist

Business name and location: Adams Brothers Construction, Parry Sound, Ontario

Services we offer: We do septic design, installation, inspection and pumping, and provide diagnostic and consultation services.

Age: 27

Years in the industry: 5

Association involvement: I am a member of the Ontario Onsite Wastewater Association, currently serve on the board of directors and as treasurer.

Benefits of belonging to the association: Education and training, assisting others in the onsite wastewater industry, and the annual convention, which is a great event.

Our crew includes: We have several different crews and team members. Each individual is a huge part of our team, from laborers, truck drivers, equipment operators and many more. Without our team we wouldn't be able to accomplish what we do and serve our community.

Typical day on the job: My day starts with organizing and getting crews going to their job sites. If it's a new site, we go and set everything up to get them started. During the rest of the day, I could be doing septic permits and designs, diagnosing a system with a problem, looking at new building sites or replacement systems, or doing inspections.

The job I'll never forget: We have dug up and replaced some pretty interesting sewage systems. Back in the day there were some weird things used as septic tanks and buried in the ground — old trash containers, 30-foot steel tanks that looked like torpedoes, and even a Volkswagen Beetle.

My favorite piece of equipment: That has to be my RIDGID sewer camera. It helps with diagnosing systems and finding problems, it saves a lot of dig time — and it saves the homeowner money.

Most challenging site I've worked on: We are in a beautiful area with a lot of bedrock. The most challenging sites are mostly bedrock with

little native soil and homeowners wanting to put a large building on them. They typically end up with a treatment unit that takes up less room. We have to get creative with design and placement so homeowners can build their dream home and have an aesthetically presentable septic system.

Oops, I wish I could take this one back: We had a job site where the homeowner's cottage was beside a massive rock cut. A giant boulder about 6 feet wide broke off the rock cut and landed right on top of the pump chamber and crushed it into the ground. The homeowner had beautiful landscaping and no access to the pump chamber with an excavator by land. We agreed to break the rock with air hammers and remove it. Eventually we craned a 1.8-ton excavator in to install the new chamber. But I don't think any of our guys ever want to use an air hammer again.

The craziest question I've been asked by a customer: I've had customers ask why they can't just run a pipe from their sewage line in the house to the lake.



Danielle Ward is shown with a 2021 Kenworth T370 from Transway Systems with a 3,300-gallon steel tank and Transway pump.

DAVIDSON TANK

Bakersfield, California



- Septic/Grease/Industrial Waste
- 400-5,000 Gallon
- Aluminum/Steel/Stainless

Our Chassis Or Yours • Built To Specs



- Portable Restroom Service Trucks
- Aluminum/Steel/Stainless

661.325.2145 • www.DavidsonTank.com

If I could change one industry regulation, it would be: I would add a regulation for pump chambers to have some sort of setback to bodies of water. We see so many pumps fail and the pump chamber is so close to a body of water that it overflows and runs into the lake. Having high level alarms certainly helps to avoid this — however, sometimes it still happens. If a setback can't be met for a building such as a boat house, then the pump chamber should be in a large watertight compartment.

Best piece of small business advice I've heard: I received advice from a former employer and have always carried it with me — the Golden Rule should be applied not only in life, but in business practices as well. Treat your employees and co-workers the way you would want to be treated. If the Golden Rule is consistently practiced, your employees will be more productive, enthusiastic and loyal. Knowing your employees and co-workers enjoy coming to their job every day makes for a very positive workplace.

If I wasn't working in the wastewater industry, I would: Hopefully be a full-time firefighter. Currently I am a volunteer. That is the career I would certainly pursue if I wasn't in the wastewater industry.

Crystal ball time – This is my outlook for the wastewater industry: I see the wastewater industry utilizing technology more and systems becoming more advanced. With residential lots getting smaller and buildings getting larger, I see a much higher need for these types of systems and believe that one day conventional systems will be far outnumbered by technology. **P**

- Compiled by Betty Dageforde



SIGN UP for e-newsletters
pumper.com

GAG SIM/TECH FILTER

The Last Line of Defense for Pressurized Distribution Systems

NO VAULT PUMP FILTER

- » 41% open area (139 square inches of open area on the 6" x 18" screen model)
- » Fits most turbine pumps (also known as deep well pumps)
- » Adds only 1/4" of height to pump making it easy to retrofit to existing systems
- » Has 3" sludge shield at the bottom of the filter
- » Disassembles for thorough cleaning if needed
- » Easy to clean surface
- » Made of PVC plastic so will not corrode
- » Self adjusting seal
- » Very light in weight so it does not make pump insertion or removal difficult
- » Screen available from 18" to 42" long
- » Also available with 316L stainless steel screen



Can be used in a manifold to handle almost any flow-rate

US Patent# 5,885,452
CAN Patent# 2,237,751

THE STF-100 SERIES PRESSURE FILTER WILL:

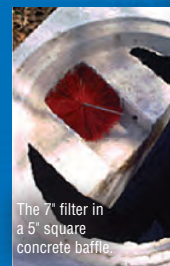
- » Lower total suspended solids (TSS)
- » Protect with low head-loss (.5002 ft)
- » Extend the life of the distribution field
- » Filter to .062", .024", .007", or .004"
- » Pass up to 83.8 gallons per minute @ 1 PSI
- » Allow for easy installation and service
- » Protect from improper system maintenance
- » Protect from system abuse
- » Satisfy your customers

GRAVITY FLOW BRISTLE FILTERS FOR RESIDENTIAL OR COMMERCIAL SYSTEMS, SEPTIC TANKS, ONSITE SYSTEMS OR EVEN YOUR POND!

Very effective at filtering tissue, hair, lint, and other solids common to waste water. And flexible enough to fit just about anywhere, most common applications are standard "tees" and square concrete baffles as shown below.



Sizes:
4" yellow
6" white
7" red
8" blue
Patent# 6,811,692



The 7" filter in a 5" square concrete baffle.



ORIFICE SHIELDS

- » The Original Orifice Protector
- » Sturdy design for all applications
- » Easy to position
- » Will not fill with gravel in any position
- » Large discharge area that does not clog
- » Large open area
- » No moving parts to stick
- » Will remain in place, even without glue

FLOAT TREE ACCESSORIES

- » Easy adjustments
- » No tangled wires
- » No float hang-ups
- » No straps to break
- » No entering tank
- » Easy pump repairs
- » Very affordable



Check Out Our Other Quality Solutions!

Risers, Security Nets, Clean-Out Sweeps, etc.

gag-simtech.com
888-999-3290





B&D Liquid Waste Hauling

Marshfield, Wisconsin

ultraShore
PRODUCTS

832.200.0988
www.ntsafety.com

ultra Safe | ultra Light | ultra Versatile



Our trench shields are perfect for:

- plumbers
- municipalities
- utility companies
- underground contractors
- and more

SHORING WASN'T MEANT TO BE THIS EASY!



NATIONAL TRENCH SAFETY
WHERE SERVICE MEETS EXPERTISE.

260 North Sam Houston Pkwy | Suite 200 | Houston, TX 77060

Dennis Oertel added a metallic blue and gloss white 2007 International 5900i Eagle Package truck built out by Imperial Industries with a 5,000-gallon steel tank and 400 CFM Masport pump. The rig is powered by a pre-emissions Cummins ISX 500 hp engine tied to a 13-speed Eaton transmission. Exterior features include a 24-inch top manway, 4-inch front and rear heated inlet and a 6-inch heated dump valve, four stainless steel frame-mounted toolboxes, stainless simulators over aluminum rims, stainless bug shield and front bumper light bars, chrome attachments over all lights and SeeLevel indicator. Interior features include AC, heated seats, Bluetooth stereo air-ride seats and Eagle model interior. Blue and yellow graphics are from TLC Truck Lettering. Trevor Oertel is the driver and the truck is used for residential and commercial waste, including grease traps, pumping public pools and cleaning up milk truck spills. **P**

SHOW US YOUR CLASSY TRUCK!

Got a truck with real WOW appeal? Show it off to Pumper readers!

Send photos of your vacuum truck after it has been lettered with your company name. Please limit your submission to one truck only.

Your Classy Truck submission must include your name, company name, mailing address, phone number, and details about the truck, including tank size, cab/chassis information, pump information, the company that built the truck, and any other details you consider important. In particular, tell us what features of the truck help make your work life more efficient and more profitable. Email your materials to editor@pumper.com or mail to Editor, *Pumper*, P.O. Box 220, Three Lakes, WI 54562.

We look forward to hearing from you!



Pictured is our **MS11-NG2** Inspection System for 3" - 6" lines

Rugged and Versatile Drain Tools That Mean Business

Trust MyTana equipment to find and fix tough problems quickly, the first time. Our pro-grade cameras, jettors, cable machines and accessories prepare you for any challenge, and come backed by our legendary service team.

Make MyTana your one-stop shop for jetter needs, like Piranha® hose, extra reels, and a wide selection of nozzles. mytana.com/jetter-nozzles



(866) 369-6353
www.mytana.com



Serving the Industry

 Visit your state and provincial trade associations

Alabama

Alabama Onsite Wastewater Association
www.aowainfo.org; 334-396-3434

Arizona

Arizona Onsite Wastewater Recycling Association
www.azowra.org; 928-443-0333

Arkansas

Arkansas Onsite Wastewater Association
www.arkowa.com

California

California Onsite Wastewater Association
www.cowa.org; 530-513-6658

Colorado

Colorado Professionals in Onsite Wastewater
www.cpow.net; 720-626-8989

Connecticut

Connecticut Onsite Wastewater Recycling Association
www.cowra-online.org
860-267-1057

Delaware

Delaware On-Site Wastewater Recycling Association
www.dowra.org

Florida

Florida Onsite Wastewater Association
www.fowaonsite.com
321-363-1590

Georgia

Georgia Onsite Wastewater Association
www.georgiaonsitewastewater.com
706-407-2552

Georgia F.O.G. Alliance
www.georgiafog.com

Idaho

Onsite Wastewater Association of Idaho
www.owaidaho.org; 208-664-2133

Illinois

Onsite Wastewater Professionals of Illinois
www.owpi.org

Indiana

Indiana Onsite Waste Water Professionals Association
www.iowpa.org; 317-965-1859

Iowa

Iowa Onsite Waste Water Association
www.iowwa.com; 515-225-1051

Kansas

Kansas Small Flows Association
www.ksfa.org; 913-594-1472

Kentucky

Kentucky Onsite Wastewater Association
www.kentuckyonsite.org
855-818-5692

Maine

Maine Association of Site Evaluators
www.maineese.com

Maine Association of Professional Soil Scientists

www.mapss.org

Maryland

Maryland Onsite Wastewater Professionals Association
www.mowpa.org; 443-570-2029

Michigan

Michigan Onsite Wastewater Recycling Association
www.mowra.org

Michigan Septic Tank Association

www.msta.biz; 989-808-8648

Minnesota

Minnesota Onsite Wastewater Association
www.mowa-mn.com
888-810-4178

Mississippi

Mississippi Pumpers Association
www.mspumpersassociation.com
601-249-2066

Missouri

Missouri Smallflows Organization
www.mosmallflows.org
417-631-4027

Nebraska

Nebraska On-site Waste Water Association
www.nowwa.org; 402-476-0162

New England

Yankee Onsite Wastewater Association (Massachusetts, Connecticut, Maine, New Hampshire, Rhode Island and Vermont)
www.yankeeonsite.org;
781-939-5710

New Hampshire

New Hampshire Association of Septage Haulers
www.nhash.com; 603-831-8670

Granite State Onsite Wastewater Association
www.gsdiia.org; 603-228-1231

New Mexico

Professional Onsite Wastewater Reuse Association of New Mexico
www.powranm.org; 505-989-7676

New York

Long Island Liquid Waste Association, Inc.
www.lilwa.org; 631-585-0448

North Carolina

North Carolina Septic Tank Association
www.ncsta.net; 336-416-3564

Ohio

Ohio Onsite Wastewater Association
www.ohioonsite.org; 740-828-3000

Oregon

Oregon Onsite Wastewater Association
www.o2wa.org; 541-389-6692

Pennsylvania

Pennsylvania Association of Sewage Enforcement Officers
www.pa-seo.org; 717-761-8648

Pennsylvania Onsite Wastewater Recycling Association
www.powra.org

Pennsylvania Septage Management Association
www.psma.net; 717-763-7762

Tennessee

Tennessee Onsite Wastewater Association
www.tnonsite.org

Texas

Texas On-Site Wastewater Association
www.txowa.org; 409-718-0645

Education 4 Onsite Wastewater Management
www.e4owm.com; 713-774-6694

Virginia

Virginia Onsite Wastewater Recycling Association
www.vowra.org; 540-377-9830

Washington

Washington On-Site Sewage Association
www.wossa.org; 253-770-6594

Wisconsin

Wisconsin Onsite Water Recycling Association
www.wowra.com; 888-782-6815

Wisconsin Liquid Waste Carriers Association
www.wlwa.com; 888-782-6815

NATIONAL

Water Environment Federation
www.wef.org; 800-666-0206

National Onsite Wastewater Recycling Association
www.nowra.org; 978-496-1800

National Association of Wastewater Technicians
www.nawt.org; 800-236-6298

CANADA

Alberta

Alberta Onsite Wastewater Management Association
www.aowma.com; 877-489-7471

British Columbia

WCOWMA Onsite Wastewater Management of B.C.
www.wcowma-bc.com
877-489-7471

British Columbia Onsite Sewage Association
www.bcossa.org; 778-432-2120

Manitoba

Manitoba Onsite Wastewater Management Association
www.mowma.org; 877-489-7471

Onsite Wastewater Systems Installers of Manitoba, Inc.
www.owsim.com; 204-771-0455

New Brunswick

New Brunswick Association of Onsite Wastewater Professionals
www.nbaowp.ca; 506-455-5477

Nova Scotia

Waste Water Nova Scotia
www.wwns.ca; 902-246-2131

Ontario

Ontario Onsite Wastewater Association
www.oowa.org; 855-905-6692

Ontario Association of Sewage Industry Services
www.oasisonario.on.ca
877-202-0082

Saskatchewan

Saskatchewan Onsite Wastewater Management Association
www.sowma.ca; 877-489-7471

Canadian Regional

Western Canada Onsite Wastewater Management Association
www.wcowma.com; 877-489-7471



**WE OFFER ALUMINUM, STEEL & STAINLESS TANKS,
AS WELL AS BLOWER & VANE PUMP OPTIONS**

FULL PACKAGE FINANCING & LEASE OFFERS AVAILABLE

PRICES DO NOT INCLUDE TAX,
TITLE & LICENSING FEES –
SEE DEALER FOR DETAILS

Contact: Cody (715) 845-2244 ext. 4105
or codyc@midstatetruck.com
www.MidStateTruck.com

NEW



#363-21

2021 Int'l HV607

Cummins L9, 370 HP,
6 Spd Manual, Air Ride Susp.,
Speced for
4000 Gal. Alum Imperial Tank



#367-21

2021 Int'l HV607

Cummins L9, 350 HP,
Air Ride Susp., 10 Spd Manual
Speced for
4000 Gal. Alum Imperial Tank

**CALL FOR
AVAILABILITY**

USED



\$69,900
#479A-20

'06 Int'l 5900I

Cummins ISX 400, 400 HP, Air Ride Susp.,
10 Spd Manual, 60,000 GVWR, 568,129 Miles,
5000 Gal. Steel Tank



\$69,900
#241A-20

'12 Kenworth T800

Cummins ISX, 450 HP, 13 Spd Manual, Spring Susp.,
244,652 Miles, 4200 Gal. Tank, Fruitland Pump,
Full Lockers



\$99,900
#445B-19

'13 Peterbilt 367

Cummins ISX, 450 HP, Air Ride Susp., 18 Spd Manual,
226,932 Miles, 4250 Gal. Imperial Tank,
Jurop LC420 Liquid Cooled Pump



\$42,900
#243A-21

'08 Int'l 7600 SBA

Cat C-13, 470 HP, 8LL Trans, Walking Beam Susp.,
66,000 GVWR, 395,889 Miles, Full Lockers,
4200 Gal. Tank



\$89,900
#279A-20

'11 Freightliner Coronado

Detroit DD15, 475 HP, 18 Spd Manual, Air-Ride Susp.,
253,165 Miles, Full Lockers 4700 Gal. Steel Tank,
NVE 866 Pump



\$89,900
#401A-22

'07 Western Star 4900FA

Caterpillar C-15, 435 HP, Air Ride Susp., 13 Spd Manual,
665,731 Miles, 5000 Gal. Tank with Hoist,
NVE 4310 Blower, Full Lockers

We own the name.
You've **earned** the name.

Pumper

Since 1979



TRANSPORT TRUCK SALES, INC.

Ask for Scott - 888-395-7551 After hours call Scott at 816-590-4076
 Delivery Available Anywhere in the Lower 48!! www.TransportTruck.com



2014 Freightliner M2-112, Detroit 410 HP, 10 spd, jake, 35 # GVW, **NEW** 2450 gallon steel vac tank, **NEW** Masport Viper vac pump.

Call For Pricing!
1-YEAR NATIONWIDE DRIVE TRAIN AND EMISSIONS WARRANTY



2018 Peterbilt 567, Paccar 455 HP, 4500 RDS Allison auto, jakes, 20# fonts, tri-axle, only 158K miles, 4650 gallon steel vac tank, Fruitland 500 vac pump.

Call for Pricing!
WARRANTY OPTIONS AVAILABLE



2009 Freightliner M2, Mercedes 230 HP, Allison auto, diff lock, 186K miles, 33# GVW, **NEW** 2500 gallon steel vac tank, **NEW** Masport Viper vac pump.

Call For Pricing!
1-YEAR NATIONWIDE DRIVE TRAIN AND EMISSIONS WARRANTY



IN PROGRESS

2009 Ford F650, Cummins 240 HP, Allison auto, NON CDL, only 55K miles!!, **NEW** 1800 gallon steel vac tank, **NEW** Masport Viper vac pump.

Call For Pricing!
1-YEAR NATIONWIDE DRIVE TRAIN WARRANTY



IN PROGRESS

2009 Peterbilt 365, C13 Cat, 350 hp, jakes, 8LL, only 100K miles, **NEW** 3360 gallon steel vac tank, **NEW** Masport Hydra vac pump.

Call For Pricing!
1-YEAR NATIONWIDE DRIVE TRAIN WARRANTY



2014 Freightliner M2, Cummins 250 HP, Allison auto, 33# GVW, **NEW** 2300 gallon steel vac tank, **NEW** Jurob PN84 vac pump.

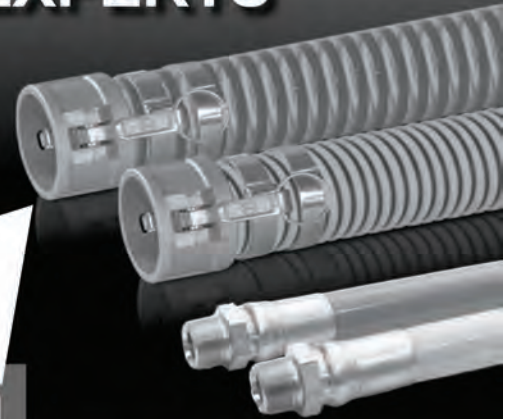
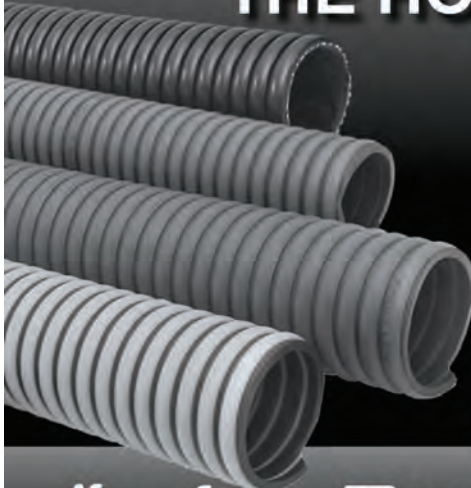
Call For Pricing!
1-YEAR NATIONWIDE DRIVE TRAIN WARRANTY

THE HOSE AND FITTINGS EXPERTS

LOWEST PRICES ALWAYS

ORDER ONLINE
24/7

www.pumperhose.com



Kanaflex

FLEXAUST



PIRANHA
 HOSE PRODUCTS, INC.

METALTECNICA

tigerflex

PLASTIFLEX
 Hose System Solutions

NAHAD
 HOSE SAFETY INSTITUTE
 Safety, Quality & Reliability

BANJO
 Fluid Handling Products

DIXON
 The Right Connection

ABBOTT RUBBER COMPANY, INC.

1311 MEACHAM RD. • ITASCA, IL 60143 • 800.852.1855
 E-MAIL sales@abbottrubber.com • WEBSITE www.pumperhose.com

Where Education Flows



wwett 22

Water & Wastewater Equipment, Treatment & Transport Show

Join The Community
REGISTER NOW at
wwettshow.com

➔ Use Promo Code **AD10**



Live in Indy
INDIANA
Convention Center
February
21-24



A Great Education Program

Choose from over **70 education sessions** spanning three days, covering a wide variety of water and wastewater topics. Sessions are led by top industry experts and professionals from leading associations, businesses and manufacturers. Many sessions count toward fulfilling required **CEUs and PDHs**. A great education program—another reason you need to attend.

Make plans now for WWETT '22 Expo Hall **February 22-24** | Conference **February 21-24**

LEARN MORE at wwettshow.com

   [@wwettshow](https://www.instagram.com/wwettshow)

PROUD MEMBER OF:





SUPER PRODUCTS CREATES NEW VACUUM EXCAVATOR TO WORK IN TIGHT SPOTS

in the
SPOTLIGHT
By Tim Dobbins

Congested streets create challenges for large service vehicles when maneuvering to jobsites. Downsizing service trucks isn't always an easy alternative, as often the bigger payloads larger trucks offer are needed to accomplish the job.

"We saw a growing need in the small vacuum excavator truck market, especially in congested, urban environments," says Michael Reis, vice president of industrial sales at Super Products. The result of that recognition is Super Products New Mud Dog 700 compact vacuum excavator truck, a vehicle designed to be compact while maximizing payload capacity.

"The Mud Dog 700 was designed from scratch to meet customer needs," says Reis. "The 7-yard debris body is sized and positioned to maximize weight distribution. The unit has the highest legal payload on a tandem axle chassis."

Super Products used decades of experience in vacuum excavators to build a truck their customers are satisfied with, according to Reis. "Combining that experience with dozens of customer interviews defined the critical features on this unit," he says. "Thousands of hours were spent analyzing and designing the unit. Hundreds of hours were also spent conducting real world functional tests, highly accelerated life tests and customer operated field tests to validate performance and durability."

The result is a truck with a 50-degree dump angle that allows dumping into a 48-inch container onsite. The Mud Dog 700 comes standard with a 600-gallon water tank and has an 8-inch diameter boom with streamlined body inlet turret to help avoid hose blockages. The boom reaches out to 18 feet and rotates 270 degrees with 10-degree downward pivot capability.

"Customers helped decide which equipment should be standard versus optional," says Reis. "For example, the 3,100 cfm by 18 inches Hg blower is standard, but users can upgrade to the 3,700 cfm by 27 inches Hg blower as an option." Other popular options for customer include an air excavation package, cold weather package, integrated axle scale package and a 360-degree camera system.

And according to Super Products, listening to customers was effective because the reaction they've received since launching the vacuum truck has been positive. "Feedback has stated that the unit has great maneuverability, drivability and a powerful vacuum," says Reis. **800-837-9711; www.superproducts.com**

SUPERIOR 5E ELECTRIC SMOKER FINDS FAULTS, ODORS, LEAKS AND INFLOW

When testing laterals, building plumbing or pumping or inspecting septic tanks, smoke testing is a quick and effective way to find plumbing faults that lead to odors, leaks and inflow. Superior Signal

Company's Superior 5E electric smoker easily connects to any clean-out, port or vent to smoke test the entire system in just a few minutes. The Superior 5E electric smoker gently pushes smoke throughout a system to find cracks or leaks and quickly identify problems. Made in the U.S., the durable Superior 5E electric smoker is competitively priced and comes complete with 8 feet of industrial grade hose. Used with Superior Smoke Candles, this cost-effective solution is ideal for hard-to-find odors, leaks and other faults in commercial, residential and municipal facilities. **800-945-8378; www.superiorsignal.com/PU5**



GENERAL PIPE CLEANERS GEN-PACK BATTERY ADAPTER

The new Gen-Pack battery adapter from General Pipe Cleaners allows for operation of sewer inspection camera systems in remote locations with limited access to power. Depending on battery type and system settings, the Gen-Eye POD or Gen-Eye X-POD

camera systems can run up to 12 hours with the Gen-Pack. The adapter is fuse-protected for safety and easily mounts to both full-size and mini-reel versions of the Gen-Eye POD and X-POD. It features a powerful command module with USB port to record video inspections on flash drives. It also includes a 7-inch LCD color monitor, one-touch recording, digital zoom, voice-over recording and more. **800-245-6200; www.drainbrain.com**

PERMA-LINER INDUSTRIES EXTREME COLD 4:1 RESIN

Perma-Liner Industries is expanding its resin offerings to include a new Extreme Cold 4:1 resin. The epoxy resin comes in 40-pound buckets and is a complement for ambient curing in temperatures lower than 30 degrees F up to 50 degrees F. Perma-Liner offers 12 resins for all types of rehabilitation projects that are eco-friendly, compatible with Perma-Liner products, meet and exceed ASTM 1216 and NSF standards, and provide minimal shrinkage for maximum adherence to the host pipe. **866-336-2568; www.perma-liner.com**



CURRY SUPPLY KEYSTONE SERVICE TRUCK BODIES

Curry Supply's new line of service truck bodies, Keystone and Keystone Pro, have a heavy-duty aluminum design and the Pro option for a crane body. All Keystone bodies feature a 52-inch-wide and 129-inch-deep bed with tie-

down rings and a textured floor for added safety. Each side features four compartments, three vertical and one horizontal. Every compartment is designed with at least 20 inches of depth and adjustable shelving. Protected door seals and stainless steel rotary latches keep all compartments secure and watertight. The Keystone Pro features a crane tower that will accept up to a 25,000 ft-lb crane, while still providing ample compartment space for tool and equipment storage. Custom features and upgrades are available on both Keystone builds. **814-569-6272; www.currysupply.com P**



VISIT: FLOWMARK.COM/USA

VACUUM TRUCKS
1,000 - 5,500 GALLONS



RESTROOM TRUCKS
800 - 2,500 GALLONS

- WE HAVE **CHASSIS AND TANKS!**
- **CALL OR EMAIL US TODAY**
- **FINANCE OR LEASE OPTIONS AVAILABLE**

📞 833.653.8100

✉ sales@flowmark.com

🌐 www.flowmark.com



Septic Tanks • Water Cisterns
Pump Tanks • Holding Tanks
Rain Water Harvesting

Multi Usage Multi Layer Multi Coverage

- Inner layer of FDA approved virgin HDPE, two inside layers of PE for improved stability, plus one outer layer of black and UV-stabilized PE
- Lifetime* corrosion protection and 5 years of labor insurance
- Strongest & heaviest poly tank on the market
- No water for backfilling required
- Low profile
- 100% watertight

Our multi-layered tank construction, consisting of virgin material surrounded by 3 layers of protection.



BEST TANK. BEST WARRANTY. BEST SYSTEM.

Roth Global Plastics
www.roth-america.com 866-943-7256

*see warranty for details



We Get You Recognized

Covering The Portable Toilet World With
CUSTOM & STOCK DECALS

Call now for custom graphics at
800.829.3021

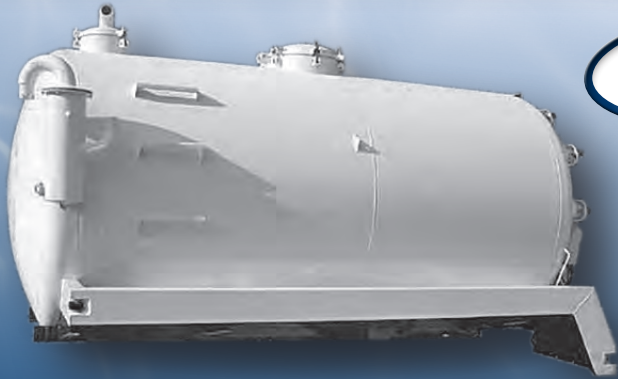


Shop online now at
STORE.ROEDA.COM

roeda.com | info@roeda.com | 20530 Stony Island Ave. Lynwood, IL 60411

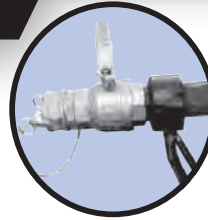
Wee Engineer WITH IMAGINATION

Tanks • Pumper Trucks • Vacuum Tank Trucks • Portable Toilet Trailers • Custom Fabrications • Environmental Equipment



In Progress

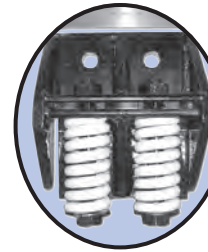
**2150
& 2500
Gallon
Vacuum
Tanks**



HEATED COLLARS

Preventing your valves from freezing will help your profits during the winter months.

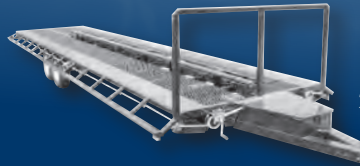
1.5-2" \$110 4" \$198
3" \$165 6" \$297



SPRING MOUNTS

decrease fatigue on your tank frame, mounts to most tanks, easy bolt or weld-on style, heavy-duty stress relieved springs.

Mounts with springs.. \$82.00
Springs alone \$11.00 ea.



BEST HEAVY-DUTY PORTABLE TOILET TRAILERS ON THE MARKET

24 ft....\$8,800 • 28 ft....\$9,100 • 34 ft....\$9,990

Our customers are pleased with the time they save loading and unloading toilets.

Follow Us   



PO Box 39, Dayton, IN 47941
Toll-Free: **877.296.2555**
Phone: 765.296.2027 Fax: 765.296.3027
www.wee-engineer.com



DISPATCHERS

Static/dynamic dispatching in real-time



CLIENTS

Customer portal, 24/7 service scheduling



SALES TEAM

Fully integrated CRM



DRIVERS

Android / iOS user friendly app



MANAGERS

Transparent detailed reporting



ACCOUNTANTS

Activity based real-time invoicing & Credit Card processing



ASSETS

Location & Inventory management

Phone: 1-844-276-2467

Email: sales@crosoftware.net

Website: crosoftwaresolutions.com

No Contracts

No Upfront Fees

Unlimited Updates

Unlimited Users / Drivers

Unlimited Support & Training

CCLS® SEPTIC TANK AND CESSPOOL TREATMENT



Maintains Septic Systems, Digests Waste, Unclogs Plumbing Waste Lines, Eliminates Odors and Reduces Organic Buildup.

How it Works:

- CCLS bacteria produce enzymes that break down organic solids into food for bacteria.
- The bacteria digest this material and use the food to multiply and produce enzymes.
- This cycle continues until all waste has been completely digested.

Other Essential Products for Septic Professionals from Cape Cod:



Tank Health

Jump Start is designed to accelerate the health of septic tanks after being pumped.



Drainfield Care

After Shock restores drainage to clogged and sluggish drainfields and structures, eliminates odors.



Drain Help

DrainMaster opens problem drains, removes buildup, keeps drains free-flowing, maintains grease traps, controls odors.



Grease Killer

BIO-REM E-D breaks down grease, digests waste, eliminates odors, unclogs drains.



Cape Cod Biochemical
Pocasset, MA

Green Products for Septic Professionals | Since 1976

800-759-CCLS | www.SepticOnline.com

Easy online ordering using our new Customer Portal!



Septic Systems and Maintenance

By Craig Mandli

ADVANCED TREATMENT UNITS



Aero-Stream Bio-Brush ATU

Aero-Stream offers NSF 40-certified ATUs from 450 to 1,500 gpd. These systems are based on **Bio-Brush** technology utilizing an extended aeration/attached growth bacteria process. Each flow rate is available in

one-, two- and three-tank configurations and can be selected based on the desired treatment level. These systems are designed to fit in locally available pre-cast septic tanks with no special configurations. Achieving removal efficiency of greater than 90% for BOD and greater than 93% for TSS, these systems are simple and energy efficient. The large surface area of the Bio-Brush avoids system upset from biological or hydraulic overloading. The air supply is provided by a weatherproof UL Listed compressor that plugs into a standard 115-volt outlet. The control panel/alarm is battery powered. These features eliminate the need to hire an electrician for gravity flow systems. **877-254-7093; www.aero-stream.com**

BioMicrobics RetroFAST

Both the **RetroFAST** and **RetroFITT-ee** (energy-efficient version) units from **BioMicrobics** are designed to be a simple upgrade to enhance a conventional septic system or renovate a biologically failed septic system. A unit can be installed directly in an existing tank to create an optimized treatment environment using submerged, fixed-film media for microbial growth with an energy efficient aeration system. It constantly sends effluent trick in dissolved oxygen to the drainfield. Where sites and regulations allow, it can be used in new installations. It is designed to deliver high levels of treatment to help ensure clogging layers don't form. **800-753-3278; www.biomicrobics.com**



MicroSepTec EnviroServer ES

The **MicroSepTec EnviroServer ES** series utilizes five chambers to achieve primary settling, treatment and clarification in one tank. The units use a moving-bed biological reactor made specifically for

the residential market. The first compartment of the system is the primary clarifier for settling sludge and solids. The second section houses the first

of two aeration chambers and contains bio-media providing surface area to promote a healthy population of microorganisms. The third compartment is used for further aeration to amplify the growth of nitrifying bacteria and the process of nitrification. The fourth chamber is the final clarifier where suspended solids settle out. Wastewater is then recirculated back to the primary clarifier in the first compartment, which contains enough carbon to promote denitrification removing high levels of nitrate. Clarified water then moves through an effluent filter before entering the fifth compartment, an effluent chamber for storage. **877-473-7842; www.microseptec.com**

Norweco Singulair Green R3

The **Singulair Green R3** water reuse system from **Norweco** reduces water consumption, reuses treated effluent, and recycles water to conserve and recharge water resources. It is designed to provide



a solution to chronic water shortages and reduces energy costs associated with water and wastewater treatment. The system quietly, efficiently and automatically treats all incoming wastewater to the highest level for restricted indoor and unrestricted outdoor use, according to the manufacturer. The system exceeds the effluent requirements of NSF/ANSI Standards 40, 245 and 350. It qualifies for green building credits under both the LEED rating system and the NAHB ICC 700 National Green Building Standard. By using the system and following local building code, the manufacturer states a homeowner can expect to dramatically reduce water usage. **800-667-9326; www.norweco.com**

ALARM SYSTEMS/COMPONENTS



SJE Rhombus PS Patrol

The **PS Patrol** from **SJE Rhombus** is an outdoor pedestal high-water alarm system that provides a convenient location to connect all wiring required for a pumping station application. It employs a receptacle for easy connection of a 120-volt pump and piggyback pump switch. The sleek, angled design of the clear enclosure includes a removable cover for easy access for field wiring and viewing components. The enclosure meets Type 3R watertight standards for outdoor use. The design allows the controller to accept a 5-inch square plastic post or 4-inch pipe/conduit for mounting. All internal components are sealed within the cover for protection from the elements. The red LEDs illuminate the top of the cover in an alarm condition for easy 360-degree visual identification. It is available with or without a 32-inch mounting post. It is CSA certified. **888-342-5753; www.sjrhombus.com**

DRAINFIELD MEDIA/COMPONENTS

Advanced Drainage Systems Septic Stack

The **Septic Stack** system from **Advanced Drainage Systems** is available in configurations of 9, 11 and 13 pipes. The units are designed to allow for exceptional soil contact without the use of gravel, functioning as a trickle filter to disperse effluent into the voids in and around specially banded ADS pipe. The pipe is engineered with holes and slots,



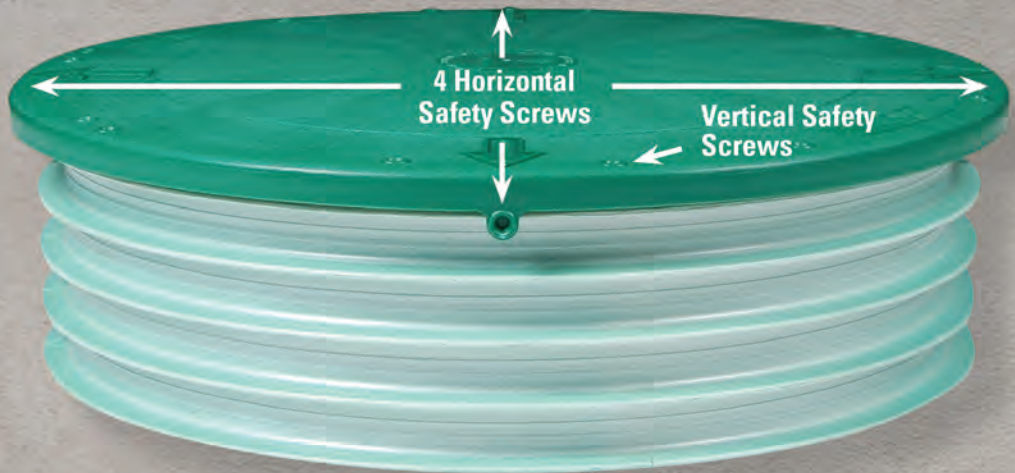
(continued)

24" HEAVY DUTY MULTI-PURPOSE FLAT RISER LID

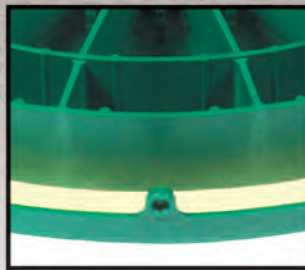
Fits most commercially available:

- Risers
- IPEX PVC Ribbed Pipe
- Corrugated Pipe

LID MAY BE USED WITH OR WITHOUT CONCRETE CENTER



Secured by 6 Vertical and 4 Horizontal Safety Screws. Screws Included.



Foamed-in Permanent Polyurethane Gasket.



Concrete Keepers™ Holds up to 70 lbs of Concrete for Added Safety.

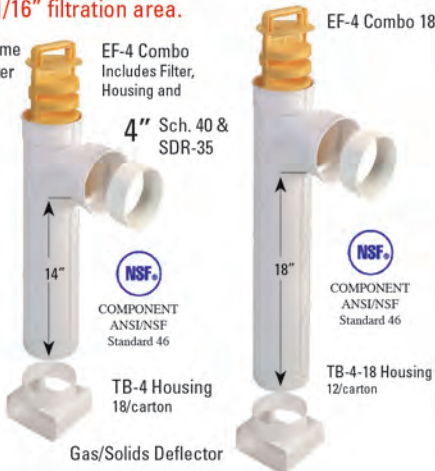


Water-TITE™ Joint Vertical and Horizontal Safety Screws

4" Effluent Filter and 4" T-Baffle™

86 ft. of 1/16" filtration area.

Increases time between filter cleaning.



EF-4 Combo Includes Filter, Housing and

4" Sch. 40 & SDR-35

NSF®
800 GPD
ANSI/NSF
Standard 46

NSF®
COMPONENT
ANSI/NSF
Standard 46

NSF®

COMPONENT
ANSI/NSF
Standard 46

TB-4-18 Housing
12/carton

SD-4 Gas/Solids Deflector

4" Effluent Filter EF-4

One-piece effluent filter fits in 4" Sanitary Tee.

- Injection molded PolyPro
- Simple to install - Easy to clean

4" Sanitary Inlet/Outlet T-Baffle™

Injection molded T-Baffle™.

- Injection molded T-Baffle
- Fits 4" Sch. 40 and SDR-35 pipe
- Simple to install
- May also be used as Inlet & Outlet Tee

6" Effluent Filter and 6" T-Baffle™

244 ft. of 1/16" filtration area.

Increases time between filter cleaning.



EF-6 Combo Includes Filter, Housing and Bushing

4" Sch. 40 & SDR-35

NSF®
1500 GPD
ANSI/NSF
Standard 46

NSF®
COMPONENT
ANSI/NSF
Standard 46

TB-6 Housing

Gas/Solids Deflector

6" Effluent Filter EF-6

One-piece effluent filter fits in 6" T-Baffle™.

- Injection molded PolyPro
- Simple to install
- Easy to clean

6" Sanitary T-Baffle™

Injection molded T-Baffle™.

- Injection molded
- Fits 4" Sch. 40 and SDR-35 pipe
- Simple to install
- May also be used as Outlet Tee with Solids Deflector



allowing it to collect and disperse effluent as it passes over corrugations in the pipe. Systems are available for use in both residential and commercial applications in trench, bed and mound configurations, as well as pressure dosing. **800-821-6710; www.ads-pipe.com**

EFFLUENT/SEWAGE/SUMP/AERATION/GRINDER PUMPS



Ashland Pump effluent pumps

Heavy-duty effluent pumps from **Ashland Pump** are available in multiple horsepower sizes for various performance requirements and have

efficient permanent split-capacitor motors. The oil-filled pumps have an upper and lower ball bearing design and handle solids up to 3/4 inch. They are made of cast iron, with cast iron impellers and equipped with a piggyback switch (20-foot standard cord) or in manual configurations. They are offered in 3/10, 4/10, 1/2, 3/4, 1 and 1 1/2 hp models. **855-281-6830; www.ashlandpump.com**

Crane Pumps & Systems Barnes Pressure Sewer EcoTRAN

The **Barnes Pressure Sewer EcoTRAN** from **Crane Pumps & Systems** is designed to provide a practical and environmentally safe alternative to traditional gravity sewers. Even in locations with difficult terrain, it reduces sewage infrastructure costs by allowing smaller diameter piping to be used in place of large complex septic sewage systems, making it a suitable sewer choice, according to the maker. It collects and grinds sewage in an underground basin, then transports it to a remote private or municipal wastewater treatment plant. **937-778-8947; www.cranepumps.com**



FPS, a brand of Franklin Electric PowerSewer System

The **PowerSewer System** from **FPS, a brand of Franklin Electric**, is a flexible, service-friendly and efficient solution for residential and commercial wastewater applications, according to the maker. This low-pressure sewer system is available in 60-, 72-, 84-, and 96-inch basin sizes and pumps wastewater to a collection or treatment area, making it an alternative to gravity sewer systems and septic tanks.

It has an isolated pump support that can accommodate heavier pumps for expanded applications. It provides added installation flexibility through the compatibility with the entire line of FPS grinder pumps. Inclusion of the FPS high head grinder allows the system to produce a maximum shut off head of 200 feet, with a maximum flow of 35 gpm. The system also allows for single-person access to every component from the top of the basin. **866-271-2859; franklinengineered.com**

Hydra-Tech Pumps S3SHR

The **S3SHR** 3-inch hydraulic-drive submersible shredder pump from **Hydra-Tech Pumps** continuously rips and shears solids with 360-degree shredding action. It uses an open-vane shredder impeller with tungsten carbide cutting tip. Compact size allows it to fit in tight spaces. A guide rail assembly is available for stationary applications. Combined with HT11 to HT20 power units, it handles flows up to 450 gpm. The safe and variable-speed hydraulic drive can be used where electric power is hazardous or impractical. **570-645-3779; www.hydra-tech.com**



Liberty Pumps ProVore

The **ProVore** grinder from **Liberty Pumps** is designed for use in applications where the addition of a bathroom or other fixtures below sewer lines requires pumping. It has the same V-Slice cutter technology used in the Omnivore Series. Powered by a 1 hp motor, this smaller grinder is designed to operate on a standard 115- or 230-volt circuit, requiring only a 20-amp breaker. No special wiring is needed. The pump comes with a 2-inch vertical-style discharge and a standard leg pattern matching the LE Series. This allows for an easy retrofit

into existing systems, according to the maker. Compact factory-assembled systems are available in both simplex and duplex versions: the ProVore 380 and ProVore 680. **800-543-2550; www.libertypumps.com**

Polylok PL-CPE4A

The **Polylok PL-CPE4A** is a submersible, 4/10 hp, 115-volt, single-phase effluent pump with a 2-inch NPT vertical discharge. It has a maximum head of 38 feet and a maximum flow of 56 gpm. The pump is designed with a 3,450 rpm oil-filled permanent split-capacitor motor and has an amp rating of 6.6 for 115 volts, a rugged cast iron housing and volute equipped with a cast iron vortex impeller capable of passing 3/4-inch solids. The stainless steel shaft is supported by two single-row, oil-lubricated ball bearings. The shaft seal is an inboard design with a secondary Exclusion V seal. It has a 20-foot UL/CSA-listed power cable suitable for submersible service and fitted with a three-prong plug. The unit is supplied with an integrated clip for the included piggyback mechanical float switch and used for automatic operation. **888-765-9565; www.polylok.com**



Webtrol Pumps VS5A24

The **VS5A24** from **Webtrol Pumps** is a versatile solids handling and dewatering sewage ejector pump suitable for residential sewage applications. It has a 1/2 hp motor, 2-inch discharge, and passes 2-inch solids. The motor is continuous duty, and three-phase models are available. It is designed with recessed cast iron vortex impellers and volutes and a stainless-steel motor housing. It also has a double mechanical seal, potted epoxy cord seals, in a maintenance-free design. The pumps can be guide-rail mounted. **800-769-7867; www.webtrol.com**

(continued)

RELIABLE.

DEPENDABLE.

LIKE YOU.



pikrite

BUILT TO WORK THE WAY YOU WORK

(800) 326-9763

LEWISBURG, PA • WWW.PIKRITE.COM

- steel & stainless available
- fully molded wiring harness
- low hose hooks
- your choice of pump
- polished aluminum hose trays
- 15-year steel tank warranty

DON'T WAIT! Check out pikrite.com/marketplace for current listings of new pumper trucks ready to go today!

Summit Rental System™ & Summit Route Management™

- 40 years of industry experience
- New Versions with *single-click route optimizing*
- Sets the industry standard
- Simply put . . . **it works!**



Visit us at the PSAI tradeshow in Reno, NV
February 1-4, 2022
or the WWETT tradeshow in Indianapolis, IN
February 22-24, 2022



Portable Restrooms | Roll-Offs | Temporary Fencing | Septic | Grease | Drains | Plumbing | And Others
Route Management | Dispatching | Mobility | Proof of Service | Service Reminders
Billing/Receivables | Inventory Control | Much More!

The BEST DEAL with the MOST INDUSTRY EXPERIENCE

Ritam Technologies, LLC
USA/Canada 800-662-8471 - Int'l 925-478-2730 - info@ritam.com - www.ritam.com

Watch demos OR call for a live demo

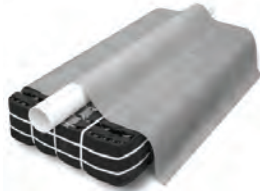
Summit
array™





Eljen Geotextile Sand Filter

The **GSF**, or **Geotextile Sand Filter**, advanced wastewater treatment and dispersal system from **Eljen** is designed for treatment and dispersal in the same footprint, easy installations and minimal maintenance. The product is used in commercial and residential applications. Utilizing a two-stage pretreatment process, the geotextile modules apply filtered septic tank effluent to the soil, increasing the soil's ability to accept the effluent and increase the long-term acceptance rate. Open-air channels within the module support aerobic bacterial growth on the module's geotextile fabric, surpassing the surface area required for traditional absorption systems, according to the maker. The result is simple installations in a smaller soil absorption area. The system is tested and certified by NSF to NSF/ANSI Standard 40. **800-444-1359**; www.eljen.com



SeptiTech STAAR filter systems

SeptiTech STAAR (Smart Trickling Anaerobic/Aerobic Recirculating) filter systems are designed for residential and commercial properties with minimal operator oversight, while delivering consistent treatment during peak, low or intermittent flows. Using an unsaturated, engineered textile media to treat wastewater that meets strict permit limits, the commercial filter system provides a simple, automatic equalization

and clarification process for 500- to more than 150,000-gpd flows, according to the maker. The biological trickling filter technology also maintains low levels of Nitrate-N, with all below-grade components that fit in watertight concrete, plastic or fiberglass tanks. Smart technology allows the system to go into sleep mode to achieve lower operating costs and power requirements. Systems are ETV-EPA verified and NSF/ANSI Standard 40/245 certified. **800-753-3278**; www.septitech.com

Sim/Tech Filter STF-100A2

The **STF-100A2** pressure filter from **Sim/Tech Filter** is designed to help maintain proper and efficient year-round operation of mounds, sand filters and other pressurized distribution systems. The low headloss (0.21 psi) pressure filter mounts on the discharge side of an effluent pump to prevent plugged holes and reduce effluent TSS. This mounting location also extends the time between servicing. The vortex action created by the pump scrubs the screen and the backflow through the filter after the pump shuts off, washing debris out. A single 2-inch filter can handle flow rates up to 83.8 gpm. It can be designed to handle almost any flow rate or load. Larger 3- and 4-inch filters are available. The standard screen filters to 1/16 inch, and optional socks allow for additional filtration to 0.024, 0.007 or 0.004 inch. **888-999-3290**; www.simtechfilter.com



PRESSURE WASHERS AND SPRAYERS

Cat Pumps 4SP and 4DX Series

Cat Pumps teams **4SP** and **4DX Series** high-pressure pumps with premium DC electric motors for on-the-go pressure wash power. The systems can be used in various applications, including portable restroom cleaning, air conditioning fan cleaning and equipment and surface washdown. The pump and motor assemblies provide up to 3 gpm at pressures from 400 to 1,000 psi and operate on any standard DC source. The auto start/stop control runs the pressure washer only when there is demand, increasing pump and motor life. Convenient, reliable and easy-to-service integrated unloaders accurately set and maintain system pressure while diverting water flow during bypass, reducing the pump and motor load and increasing system life. Crankcase oil is pre-filled, so pumps are ready to use right out of the box. Multiple build-to-order configurations are available to fit a variety of needs. **763-780-5440**; www.catpumps.com



RISERS/LIDS



Hedstrom Plastics septic lids

Hedstrom Plastics septic lids are designed to eliminate riser systems. They are offered in 18- and 24-inch lids and adapter plates that are retrofit for standard corrugated I.D. drainpipe. The square-to-round adapter plate allows for quick conversions of tank risers to corrugated pipe. They are rotationally molded for strength with UV inhibitors to protect against color fade. Lids can be standard, foam-filled or sand-filled for additional strength. A gasket and safety screws are standard, along with optional custom nameplates displaying your company name and phone number. Safety nets are available upon request. **888-434-5891**; www.hedstromplastics.com

Orenco Systems DuraFiber Lids

Orenco Systems 24-inch **DuraFiber Lids** are made of resin-infused fiberglass fabrics for durability and damage resistance, with breaking strengths in excess of 20,000 pounds. They fit most ribbed PVC and HDPE riser pipe and weigh 11 pounds. Lids have a flat-style flange, allowing flush-to-grade installation; a cored centering ring, providing an easily aligned, snug fit; and a urethane gasket, helping form a watertight seal. Lids include four 5/16-inch stainless steel flathead screws and a hex wrench. Optional insulation (2 or 4 inch) is available, which can be preinstalled at the factory or installed on site with a hardware kit. The lids have a nonskid surface with customizable center insert (for logos, etc.), along with a molded-in caution statement. In addition to the standard green color, they're available in three landscape patterns — grass, river rock and bark. **800-348-9843**; www.orencosystems.com



1.888.428.6422

SNELSON@TANKTEC.BIZ

TankTec

Tank Technologies & Supply Co, LLC

WWW.TANKTEC.BIZ

300 to 6000 Gallons
Aluminum or Stainless

FORD 1500 GALLON



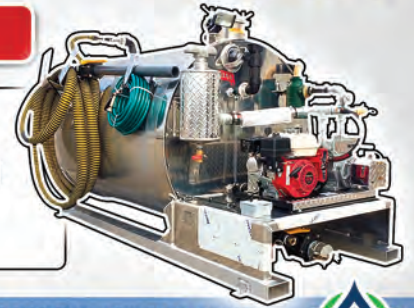
KENWORTH
4000 GALLON

2000 GALLON
PORTABLE
RESTROOM



SLIDE IN TANKS

Standard Features:
Aluminum construction
25' vacuum hose with valve and wand
Honda engine driven vacuum pump
12v water pump



TankTec FACTORY BUILT TRUCKS, BUILT-TO-ORDER
IN-STOCK, FINANCING & LEASE OPTIONS



Septic-Scrub™

The Demonstrated Drainfield Restoration/Maintenance Solution

Backed By Science ■ Proven with Experience ■ Many Satisfied Homeowners

Septic-Scrub™ is a superior product for the maintenance and restoration of septic system drainfields. Customers appreciate that it is environmentally safe, contains no organic chemicals and does not produce any toxic by-products. Most importantly, **Septic-Scrub works.** It breaks down sulfide buildup in the biomat and soil to allow for better water absorption.

Learn more about Septic-Scrub at www.arcan.com.

arcan

P.O. Box 31057
Clarksville, TN 37040

For information on increasing sales and providing a valuable service to your customers, call Arcan Enterprises at **888-35ARCAN (352-7226)**

EASILY MOVE RESTROOMS

HITCH HAULER™

Carry A Restroom & Super
Mongo Mover On Your
Pickup or Sport Utility



SUPER MONGO MOVER®



Patented

- Move ADA Restrooms
- Aluminum Frame
- Available with 4, 6 or 8 wheels
- Easily Rides on Your Truck
- Ships UPS

DA
Deal Assoc. Inc.

Toll Free: **866.599.3325**

www.DealAssoc.com



TUF-TITE tank risers

Tank risers from **TUF-TITE** have internal supports or ledges to reinforce internal plastic safety lids. The ledges will strengthen the company's plastic internal safety lids or a variety of internal safety devices made by others, such as concrete, fiberglass or rope netting. The riser lids come with

the necessary mounting hardware, including safety screws. **800-382-7009; www.tuf-tite.com**

SEPTIC SYSTEM BACTERIA

Cape Cod Biochemical Jump Start

Jump Start healthy probiotic septic starter from **Cape Cod Biochemical** is designed to accelerate the health of septic tanks after pumping. It prevents clogging, sewage backups and odor drafts from septic pumping tanks, reducing organic sludge, grease buildup and slime layers beneath the drainfield, according to the maker. After the septic tank is pumped, add 1 pound to a 500-gallon tank or add 2 pounds to a 500-gallon cesspool. CCLS septic tank treatment should be used monthly per label or at the septic contractor's recommended dosage. It is safe for the environment when used according to specifications.

800-343-8007; www.septiconline.com



Century Chemical Bio-Tab

Bio-Tab from **Century Chemical** sinks to the bottom of septic tanks where buildup begins. There, self-reproducing bacteria and enzymes gradually dissolve to create a growing area of activity, digesting and liquefying organic waste, treating the entire system, including the

drainfield. It is able to establish itself by working from the inside out, and regular usage — combined with routine pumping — can aid and support the natural digestion of waste, helping septic systems to maintain good working condition, according to the maker. **800-348-3505; www.bio-tab.com**

Ecological Laboratories P RO-PUMP/HC

PRO-PUMP/HC liquid live bacteria from **Ecological Laboratories** is a blend of microorganisms selected for broad-spectrum application in industrial and wastewater treatment. It contains more than 30 strains of bacteria designed to resolve problems that occur in septic systems. Its performance results in

the rapid breakdown and removal of fats, oils and greases that build up in septic tanks and absorption fields, according to the maker. It is a consortium of vegetative non-spore-forming bacteria formulated to exhibit exceptional performance in low-oxygen facultative anaerobic environments. Regular treatment can help reduce surface solids, bottom solids and odor, the maker states. **800-326-7867; www.proppump.com**



J&J Portable Sanitation Products NuTank

NuTank septic system treatment from **J&J Portable Sanitation Products** is designed to replenish the enzymes in a septic tank. With high concentrations of billions of specific bacteria, it is engineered to break down solids, scum and

sludge for a healthier septic system. Monthly usage can help reduce the potential for backup and costly repairs such as drainfield damage, according to the maker. It can help boost the progression of bacterial decomposition to help keep the septic tank and drainfield functioning, even battling harsh detergents and antibacterial products. Monthly use is recommended by dissolving a packet into a drain or toilet and running water. It is environmentally friendly and safe for all plumbing. It comes prepackaged in 12 packets per jar and 12 jars per case. Company contact information can be added to each jar. **800-345-3303; www.jjchem.com**

Lenzyme

Lenzyme is an enzyme-bacteria product used as a septic biological maintainer, drain cleaner and sewage treating agent in the home and in industrial, commercial and municipal installations. It can be packaged in the company's brand name or private labeled. It may also be used in formulations specifically designed for a given condition or application. Various formulae have been developed for use in drains, septic tanks and cesspools, and for industrial and commercial application.

It is approved by the USDA for use in sewage and/or drainlines of official establishments operating under the federal meat, poultry and egg products inspection program and is only sold to licensed contractors. **800-223-3083; www.lenzyme.com**



Satellite Industries Safe-T-Fresh QuickScents BIO

Safe-T-Fresh QuickScents BIO 30-gram deodorizer packets from Satellite Industries contain all the active ingredients of 60-gram packets, but in less quantity, making them suitable for moderate traffic and heat

conditions, such as in small septic and holding tanks. In the same way, 30-gram packets also break down waste to prevent piling and clean tank walls where residual waste can dry and cause lasting odors. They provide environmentally safe odor control and can be beneficial to waste dump sites. They liquefy waste and digest restroom tissue, with no mixing, waste or mess. They are available in 80 packets per bag or 400 packets per case (five bags). **800-883-1123; www.satelliteindustries.com**

(continued)



T&T Tools, Inc.

Fax: 800.521.3260

Email: sales@mightyprobe.com

800.521.6893
www.MightyProbe.com



Call for a FREE Catalog

Call for a FREE Catalog

HOOKS...

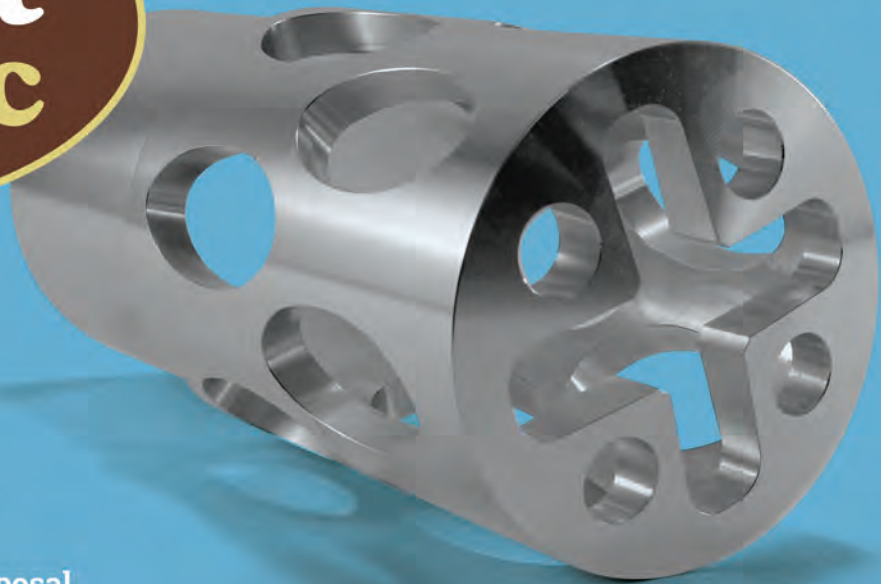
- > Several different styles of heat-treated hooks are available
- > Top Poppers are great to open manhole covers
- > The Handy Hooks allow two handed use

PROBES...

- > Insulated, standard, and specialty soil probes
- > Metal shaft sizes: 3/8" round, 3/8" hex, or 7/16" hex
- > Replaceable tips are threaded on and hardened
- > A "slide" allows the handle to pound the shaft into the ground



Pump what you want.
Keep out what you don't.



waste debris filter

- reduces persistent hose clogs
- saves time on pumping and disposal
- made of solid aluminum
- fits snug into your standard 3-inch hose

SUCKITSEPTIC.com



Surco Portable Sanitation Products Enz-O-Matic

The **Enz-O-Matic** biological organic waste degrader and odor eliminator from **Surco Portable Sanitation Products** includes a high concentration of non-pathogenic, live bacteria cultures designed to rapidly degrade organic wastes with a blend of surfactants and odor counteractant fragrance. It is nonpolluting, contains no acids or toxins, and is certified *Salmonella*-free. It contains over 200 billion live bacteria cultures per gallon. The bacteria count doubles every 20 to 30 minutes to provide continuous enzyme production. Enzymes digest and liquefy grease, blood, urine, vomit, feces, sewage and other organic substances, neutralizing odors on contact, according to the maker. It can be used for drainlines, septic tanks and septic spills. **412-789-8683; www.surco.com**



UV DISINFECTION EQUIPMENT

Jet Inc. Illumi-Jet

The **Illumi-Jet UV** disinfection unit from Jet Inc. is capable of reducing fecal coliform bacteria levels to well below the most stringent U.S. treatment standards, according to the maker. It uses a germicidal lamp that emits 95% of the ultraviolet energy at the wavelength of 254 nanometers. This wavelength is in the region of maximum germicidal effectiveness and is lethal to virus, bacteria, protozoa and mold. The disinfection chamber couples directly with any system's 4-inch discharge pipe, and it is permanently installed below grade. When fully inserted, the lamp housing is correctly positioned by an integrated keyway near the top of the disinfection chamber and creates a well-defined flow path, ensuring system effluent has the proper ultraviolet exposure time. Under standard operating conditions, fecal coliform reduction exceeds 99.9%, the maker states. **800-321-6960; www.jetincorp.com**



Walex Products Bio-Active Septic Tank Treatment

Bio-Active Septic Tank Treatment from **Walex Products** can help reduce solids and restore the population of worker bacteria and enzymes, helping keep septic systems healthy between recommended tank pumping, according to the maker. Monthly



application involves flushing one packet down the toilet. It is safe for all plumbing and helps prevent backups and dissolves solids. Each bag contains a one-year supply. **800-338-3155; www.walex.com**

SALCOR 3G UV Wastewater Disinfection Unit

The **3G UV Wastewater Disinfection Unit** from **SALCOR** is used for residential, commercial and municipal applications, and it is UL-certified NEMA 6P flood-proof and NSF/Washington State Protocol six-month tested (with 21 upstream treatment systems). It inactivates bacteria/virus pathogens, including superbugs. Rated at 9,000 gpd gravity flow, it is meant as a reliable building block for large water recovery/reuse systems. When installed in 12-unit parallel/series arrays with ABS pipe fittings, systems can disinfect more than 100,000 gpd. Gravity flow equalizes without distribution boxes. Each unit has a foul-resistant Teflon lamp covering, two-year long-life lamp with efficient installation, minimal annual maintenance and energy use of less than 40 watts. **760-731-0745; www.salcor.world**



SEPTIC SYSTEM CHEMICALS

Arcan Enterprises Septic-Scrub

Septic-Scrub chemical additive from **Arcan Enterprises** is designed to help remove sludge that builds up and sticks to the stone in a drainfield, pit or sand mound to rejuvenate the drainfield. According to the maker, it works in the first 24 hours after application. It can serve as part of a maintenance program. It works with all types of systems, is safe to handle and is environmentally friendly. **888-352-7226; www.arcan.com**



VENT PIPE FILTERS

Pagoda Vent

Vent pipe filters from **Pagoda Vent** provide septic field microbes with the oxygen they need to thrive. They give concrete tanks gas release to mitigate microbial-induced corrosion and also provide pressure relief for pumps. They provide proper ventilation, while remaining inconspicuous and attractive in the landscape. The premade units are durable, lightweight and will not rust. They encourage a healthy subsurface environment, release gases, and help preserve concrete tanks. An optional odor filter cartridge using a specialized concentrated media offers years of lasting odor control and fits concealed in the device, according to the maker. **888-864-1468; www.pagodavent.com P**



SEPTIC SYSTEM AGITATOR

Crust Busters agitator

The handheld power agitator from **Crust Busters** has an 80-inch shaft and two- or three-blade propeller designed to mix a 1,000-gallon



septic tank in five minutes. Options include 2-, 4-, 6- and 9-foot extensions and a short three-blade shaft that adapts to the two-blade unit. **763-878-2296; www.crustbusters.com**

(continued)

NEW HydraBore Blaster™

A Power Booster®
with a Water Jetting Ring

HydraBore Blaster
Available In:

3" & 4"

Special Orders in 6" & 8"

Power Booster
Available In:

2"- 6"

Custom Sizes Available



The patented design of exterior nozzles provides an array of specialized cleaning. Far better than any physical type of scraping, chiseling, or manually removing any aged buildup without any extra physical labor on the operators part. **The HydraBore Blaster** will BLAST down and physically remove 99% of all built up tallow, soap residue and tank waste left behind from poor service work, or anything that hasn't been serviced in a LONG TIME!

Best used with a jetter, it will still only add roughly 16 gallons of high pressure water in a 10 minute period. Total time on a job, with a HydraBore Blaster pumping approximately 2000 gallons of waste, is less than 22 minutes, at any depth, from 5 feet to 500 feet. You will pump it all in the same amount of time as with the **Power Booster** but with the added benefit of the HydraBore Blaster!!!

Limitless vertical lift

One-man operation

Faster loading times

Keeps pumps cooler

Extremely decreases pump wear and tear

Reduces back injuries

Gets everything out of the tank

Cuts maintenance costs

Works with industrial-size pressure washers & jetters

Re-suspends materials while pumping

PATENTED

Authorized Dealer For

MASPORT

COXREELS



PressureLift.com

972-355-0550

866-504-6596



LET US DO YOUR DIRTY WORK.

Handle-Tech's patented, sturdy design makes it easier to **grip, lift and drag hoses and pipes**. So you can get more work done, more efficiently ... and stay cleaner while you do it. Want to save time *and* money in your business?

Let Handle-Tech help carry the load.



**SCAN to WATCH
HANDLE-TECH
in ACTION**

or visit:
handle-tech.com



HANDLE TECH



GET
EMAIL NEWS
ALERTS FOR
Pumper

Go to pumper.com/alerts and get started today!



CASE STUDY



Combined treatment and dispersal system replaces failed conventional system at elderly home

Problem: The Victor Hernández Building Elderly Housing facility in Aguadilla, Puerto Rico, had a failed onsite septic system in poor soils that needed weekly pumping to a holding tank. The limited area available, minimal budget for operations and maintenance and challenging wastewater typical of a project of this type, steered project designers toward a passive treatment system with a small footprint and the ability to meet treatment and economic needs.

Solution: Following thorough review of the project, Sani-Plant selected an NSF 40 and BNQ Certified **Advanced Enviro-Septic** combined treatment and dispersal system from **Infiltrator Water Technologies**. A 6,000 gpd system was designed with an additional septic tank that included a **Septic Maze** insert to increase the waste retention and allow greater primary treatment efficiency. Because the system is rigorously tested for high level treatment, it only needed a treatment and dispersal footprint of 5,609 square feet (39 1/2 by 142 feet) with an application rate of 1.07 gpd per square foot. Also, the project required only 2,600 feet of AES pipe in a butterfly configuration with eight serial sections. This saved the facility a significant amount of space.

Result: Victor Hernández Building saved significant short and long-term costs by installing a passive, small footprint CTD system with a proven record for exceeding required treatment levels. 800-221-4436; www.infiltratorwater.com



NAWT

National Association of Wastewater Technicians

YOUR SOURCE FOR **REAL** LEARNING

Upcoming Training & Events

Inspector Training

NAWT Inspector Certification Renewal

January 20-21, 2022

Location: Virtual Online Course

8:30 a.m. - 12:30 p.m. MST

each day for a total of 8 hours

Contact: Aaron Tevik - 520-621-3691

atevik@arizona.edu

Upcoming Events

2022 WWETT

February 21-24, 2022

Indiana Convention Center,

Indianapolis, IN

Operation and Maintenance Training

NAWT O&M 2 by CPOW

December 6 & 7, 2021

Location: Virtual Online Course

Contact: Lisa Nicoll cpow@cpow.net

Online Vacuum Truck Training Available!

Please visit our website for more information.

Online NAWT DOT CDL Pre and Post Trip Inspection Course

Please visit NAWT.ORG/TRAINING.HTML to register.



NAWT

National Association of Wastewater Technicians

YOUR SOURCE FOR **REAL** LEARNING

For more information call: **800-236-6298**

WWW.NAWT.ORG



wwettTM22

Water & Wastewater Equipment, Treatment & Transport Show

Live in Indy
INDIANA
Covention Center
February
21-24

Join The Community
REGISTER NOW at
wwettshow.com

➔ Use Promo Code **AD10**

Why Should You Attend?

- ✔ **Explore the Expo Hall** for tools and resources you need for your business
- ✔ **Education** taught by some of the best and brightest in the industry
- ✔ **Events** to network with your peers—or just kick back and make new connections

LEARN MORE at wwettshow.com

   @wwettshow

PROUD MEMBER OF:



Perma-Liner named exclusive distributor of GP Sewer Cam

Waterline Renewal Technologies, a portfolio company of Behrman Capital, announced that Perma-Liner Industries is now an exclusive distributor of GP Sewer Cam, a tool for high-definition diagnosis, verification and documentation of pipeline rehabilitation projects. The GP Sewer Cam allows operators to turn a jetter into a sewer camera by attaching the proprietary adapter to a jetter hose.

NOWRA elects board of directors

The following members have been elected to the National Onsite Wastewater Recycling Association board of directors to serve through 2024: Tricia Scott, regulator, Nebraska; Chris Chapman, service provider, Missouri; Claude Goguen, supplier/maker, Indiana; and Joshua Gunia, installer, Washington. Outgoing board members are Chris Kumnick, regulator, Georgia; Jessica Wood, service provider, Missouri; and Bruce Stow, supplier/maker, New York.

In other NOWRA news, the 2021 Richard J. Otis Industry Achievement Award was given posthumously to Ron Suchecki Jr. at the 2021 Onsite Wastewater Mega-Conference in Texas. Suchecki, research director and general manager for Hoot Systems and a partner in Central Texas Precast, passed away in February 2021 at age 50.



Jim Meagher, left, and Dick Mottolo.

Jim Meagher Was Dedicated to the Pumping Profession Until His Death at 101

For Jim Meagher, dedicating himself to the pumping industry wasn't something he had to try, it was just the way he was.

Jim Meagher was actively pumping and attending Massachusetts Association of Septic Pumping Contractors meetings right up until he passed away earlier this year in July. What's extraordinary about that, is that Meagher was 101 years old.

"Jim was still answering phone calls right up to 100 years of age," says Dick Mottolo of Service Pumping & Drain, a longtime friend of Meagher. "There's not too many people that can match Jim's longevity and commitment to our service profession."

Meagher served in the U.S. Air Force as a flight engineer as a young man before meeting his wife and raising a family in Rutland, Massachusetts. He and his wife, Betty, started Rutland Sanitation Services and operated the business for over 50 years.

Along with running the business, Meagher was still actively attending and participating in MASPC meetings. "Jim always attended the meetings with his son, Tom," Mottolo says. "He came to every meeting and got a good meal and glass of wine. He was a real gentleman. Kind of a quiet guy but he ran a really good business. He loved the business."

To commit to something that long shows a dedication rarely seen in any industry and something that according to Mottolo can only come from true passion. "It's like a lot of things in life. You either have a passion for it or you don't. And when you don't, it's obvious," Mottolo says. "But Jim was interested, and he had the passion for it."

It's Your Magazine. Tell Your Story.

Pumper welcomes news about your company or services.

Send your ideas to editor@pumper.com.

Extra! Extra!
Want More Stories?

Get extra news,
 extra information,
 extra features with

Online Exclusives

Exclusive online content
 for *Pumper*

www.Pumper.com

COMPANIES NEED *Fresh Content* TO STAY RELEVANT... LOTS OF IT.

Trying to handle all of that on your own can be daunting.

That's why you need COLE Media.

Useful, organized, cross-platform content is the key to a successful marketing strategy. Our content generation team specializes in custom-built, affordable solutions exclusively tailored to fit your needs.

Digital & Print Media

- » Website content «
- » Blog posts & customer education materials «
- » Press materials - products, industry, personnel «
- » Social media management & marketing «
- » Email marketing «
- » Hired professional photography & videography «

Creative Content

- » Logo & business card design «
- » Outside creative (advertisements, billboards, digital) «
- » Catalogs & brochures «
- » Video editing «


COLEmedia

800.257.7222

www.cole-media.com | info@cole-media.com



Surco
Fresh Lube
Pump Oil Odor Control Additive

Counteracts offensive exhaust odors generated by septic vacuum pumps

SURCO
PORTABLE SANITATION PRODUCTS
800.556.0111
surco.com



Over 35 years building quality equipment!

HotJetUSA
OUR MOST VERSATILE JETTER!
FULLY LOADED! PRICE INCLUDES TRAINING!

HOTJET II
35 HP Vanguard Engine • 10GPM @ 4,000 PSI
Cleans 2-12" Drains with Hot OR Cold Water

1-800-213-3272
www.hotjetusa.com

PRICES SUBJECT TO CHANGE



CONFINED SPACE ENTRY PACKAGE
ONLY \$3,195

The Best Package On The Market Includes:

- 4-Gas Air Monitor (3 Year Sensor Warranty)
- 7' Tripod
- 3-Way Fall Protection
- Work Winch
- Full Body Harness

Add a Blower with 15' of duct for only \$350!
Add a 5 Minute Escape Respirator for only \$500!

MTECH 800.362.0240
www.mtechcompany.com



51T
Trailer Jetter

20 GPM @ 4000 PSI
76 HP Kohler EFI

FREE Shipping/Delivery
FREE Reaper Nozzle

AMERICAN JETTER.COM
866-944-3569

DREDGING & DEWATERING SERVICE

- Municipal and Industrial • Digester and Lagoon Cleaning
- Double Belt Filter Presses • Liner Repair & Replacement

Fluid Technology, Inc. (513) 241-1600
Fax (513) 756-1995
www.fluidtechnologyinc.com

We own the name.
You've earned the name.

Pumper Since 1979

SOLD

Sell your equipment in *Pumper* classifieds

Reach over 25,000 potential buyers each month when you list your equipment in the classified section. Plus, your listing is placed automatically online at the *Pumper* website. In addition, your ad will be placed in the *Pumper e-Trader*, an electronic magazine that is e-mailed to readers. That's three ways to move your equipment out of the yard!

Why wait?

Go to pumper.com/classifieds/place_ad



Scan the code with your smartphone.

R. Nesbit Portable Toilets introduces:
The Sani-Klip
 A COST EFFECTIVE SOLUTION FOR PROVIDING ALL OF YOUR CUSTOMER'S HAND SANITIZER



CONTACT: KATIE/AMY
 R. NESBIT PORTABLE TOILETS
724-652-8232
www.best-portable-toilets.com



FREE PRIVATE LABELING
 Drainfield Solutions
 Root Control - Septic Solutions
 Grease Solutions

www.lenzyme.com
800-223-3083

Surco
Potty Fresh Plus
 Portable Toilet Deodorant




Powerfully-effective odor control liquid portable toilet deodorant!
 Non-Formaldehyde • Deep Blue Non-Staining Dye

SURCO
 PORTABLE SANITATION PRODUCTS
 800.556.0111
surco.com

EASY-KLEEN
 PRESSURE SYSTEMS LTD.
 MANUFACTURER OF HIGH PRESSURE CLEANING EQUIPMENT

VAN PACK JETTERS
 12 GPM @ 3500 PSI






ARCTIC BLASTER

- > Perfect for all your thawing needs
- > Thaws pipes above & below ground
- > Use on plastic, copper or ABS
- > Perfect for roof drains

Valve Heaters for your Septic Truck
Arctic Valve Heaters



- > No piping changes or welding needed on your truck.
- > For: 3", 4" or 6" MZ Lever Valves
- And: 4" or 6" Betts Valves
- > Developed by the inventor of the Arctic Blaster

Heat the Valve, Not the Sewage
 And They Work!

ARCTIC BLASTERS INC.
 SUNDRE, ALBERTA
403.638.3934 • ArcticBlaster.com

The Shaddix Company

Custom Made To Your Specs Truck Beds & Forms



1500 & 1000 Gal.
 2 Compt. Septic Tank Forms



Septic Tank Delivery Beds

Call Dewayne for a quote!

256-737-0051
www.shaddix.us

EASY-KLEEN
 PRESSURE SYSTEMS LTD.
 MANUFACTURER OF HIGH PRESSURE CLEANING EQUIPMENT

WOLVERINE DRY STEAM GENERATORS



20/30/40/50 BHP
 Up To 2,000,000 BTU

- Curing
- Thawing
- Degreasing
- Degassing
- Melting
- Cleaning & Restoring
- Prepping Surfaces for Paint
- Purifying
- Weed Control



YouTube
www.youtube.com/easyklean
1-800-315-5533
www.easyklean.com • sales@easyklean.com

OPEN JETTER TRAILERS GROUNDHOG JETTER



20 GPM @ 4000 PSI
ENCLOSED JETTER TRAILERS (Hot Water)



VACUUM TRUCK HEATERS
 440,000 BTU to 4,000,000 BTU

T&T Tools, Inc.
800.521.6893



CALL for a **FREE Catalog**
 Many styles Available



Insulated Soil Probes (for locating)
 Heat-Treated Hooks (for covers, lids, etc)

www.mightyprobe.com

Join A National Brand: www.RooterMan.com

ROOTERMAN

"TO THE RESCUE"

NO ROYALTY ON PERCENTAGE OF SALES

Franchise Package **\$3,975**

RESERVE YOUR EXCLUSIVE TERRITORY • Call 1-800-700-8062



YouTube
www.youtube.com/easyklean
1-800-315-5533
www.easyklean.com
sales@easyklean.com



CLASSIFIEDS

See photos in color at www.pumper.com

BUSINESSES

Well established, booming Central Missouri business for sale. 600+ units on the street. Large inventory of trucks and rental equipment. Many long-term construction customers. Only serious buyers need inquire. Email centerlmoportapotties@gmail.com for more information. (P12)

Very diversified Environmental Services Company for sale. Owner is retiring. Septic and grease trap cleaning. Drain cleaning, Portable restrooms, video camera services, lift station services, trenchless pipe point repair, confined space services, hydro excavation, frac tank rental, distributor for several home aeration systems, authorized service center for E-One lift pumps, Residential, Commercial, Industrial, Agricultural, Municipal Services. Located in Northwest Ohio for over 40 years. Very profitable. Late model equipment in good condition. Turn key operation. Business is run remotely. Serious inquiries to MrSeptic6@gmail.com (P01)

For Sale Portable Toilet Business in Birch Run Michigan. NO LAND. Over 600 portable toilets, wash stations, and handicap units. Well kept units. Well established company, owners want to retire. Included would be all accounts and 5 pumper trucks. 2021 Ford F550 4WD, will haul 6 units 600 gallons. 2019 Ford F550 4WD will haul 8 units 600 gallons. 2016 Ford F550 4WD 1000 gallons. 1999 Ford F550 4WD will haul 5 units. 2007 Chevrolet Silverado 2500 with push in unit 500 gallons. 1- 6 place delivery trailer. 1- 16 place deliver. Asking 950K. only serious inquires please. Call 989-737-1920. (P02)

FLORIDA QUALIFYING AGENT AVAILABLE - Florida Certified Plumber available as a Qualifying Agent to license your business to contract in Florida. Also have Florida Certified Utility & Excavation license available as well. Call Ernie to discuss 786-255-6626 or email: mhe91114@gmail.com. (P01)

Portable Restroom Business for Sale in northern VA! Multiple restroom trailers, pumper truck, plastic units, hand washing stations, generators, professionally designed logo, website, and social media pages. Accounting software, vendor list, and contracts signed for 2022. Willing to work with buyer to show how operations work (if needed). If interested, please email sutterback6@gmail.com or call 540-550-5014 VA (P12)

Oregon - Busy Septic Pumping, Inspection, O & M, drain cleaning and Portable Toilet business in rural region, owners retiring. Strong cash-flow and margins. Consistent market share leader. Two locations, secure storage yards and well-cared for fleet of equipment including 5 pumpers, 2 tenders, 2 flatbeds, 3 service vans, and tons of tools and equipment. Excellent presence, customer follow-up and marketing programs. Trailer jetter, large inventory of well-maintained sewer machines, video inspection cameras, locators etc. Deluxe 7-unit event trailer and 150 premium portable rentals. Nice office and shops. We roll fast and hard within a 10K square-mile region. Verifiable books, records, and well-trained staff. Business, real estate, shops/office and all equipment and fleet. Grossing \$1M+. Principals only call 541-429-4127 and leave contact info. (P12)

SOS Drain Opening business for sale. Includes two service trucks. One is F-550 4x4 box truck with 300-gallons of water storage, jettors, many sizes of cable machines and push cameras. Grosses approx. 200K per year. Has been mostly a one man operation. I am retiring and have many happy customers and a excellent reputation Located in Pagosa Springs Colorado, 1 hour from Durango, area is growing very fast! Please contact Steve for pics or more details. Serious inquiries only please. Asking \$249,000. 970-903-9104 or email pagosaenvironmental@outlook.com (P01)

Well-established, never been better, booming, SW Florida business for sale. From North Port to Marco Island. 1020 units on the street, 15 ADA, 30+ sinks, 20+ holding tanks, 9 trucks, 2 trailers. Many long-term construction customers, year-round event customers. Documented yearly growth. Only serious buyers need to inquire. Financing Available. Email office@ronsjons.com FL (P01)

www.RooterMan.com. Franchises available with low flat fee. New concept. Visit web site or call 1-800-700-8062. (PBM)

PUMPER'S MONTHLY CIRCULATION REACHES
20,000+ READERS!

COMPUTER SOFTWARE

FreeServiceReminderSoftware.com,
FreeServiceDispatchSoftware.com,
FreeRouteManagementSoftware.com. (PBM)

DEWATERING

Aqua-Zyme Dewatering System. 550-gal Polymer Mixing and Dosing System (2011); 3-30-yard dewatering boxes (2017); 4-5'x22' new fabric panels; 4" Riverside Trash Pump; sold as package only; new cost was \$130,000+; Priced to sell at \$52,000 Contact Steve 520-631-1671. Tucson, Arizona. (P12)

DRAINFIELD RESTORATION



New & Used TERRALIFT machines
Terralift parts and beads. Aerratech Solutions LLC, 413-394-4567 or cell- 413-441-1140. Call and learn how the TERRALIFT machine can earn your business an **extra \$250,000 in revenue a year.** (PBM)

HAZARDOUS WASTE UNITS



2009 Kenworth T800 Keith Huber liquid vac truck. ASME/DOT412 2,800-gallon hydraulic lift fully opening tank. 440CFM liquid cooled pump. 270k miles/10k pump hrs. **\$49,900.** **Phone:606-314-0554 Photos: martinspeterbilt.com.** (P12)

Pre-owned Presvac 2,000 U.S. gallon, carbon steel, D.O.T. certified, vacuum tank unit with a Deutz diesel driven PV750 vacuum-pressure Pump package. Mounted on a 2012 International 4300 cab & chassis. Stock #5236C. \$43,000.00. www.vacuum-salesinc.com (888) VAC-UNIT (822-8648). (PBM)

Pumper
www.pumper.com



2007 Kenworth T800 with Presvac 3,500-gallon DOT Certified dump/door vacuum tank, Hixon 900 CFM 27", new blower and tank inspections, pre-emission with 400 CAT with 18-speed trans. 44k rears 20k pusher 20k front. **Great condition. KLM Companies 617-909-9044. (PBM)**

2009 Peterbilt 340 cab & chassis with a Presvac 3,200 U.S. gallon, C/S, D.O.T. 412, dump type, vacuum tank and a Presvac PV750 pump. (Stock #8412C). **www.vacuumsalesinc.com (888)VAC-UNIT (822-8648).** (PBM)

2013 Peterbilt 348 cab & chassis with a Presvac 3,200 U.S. gallon, C/S, D.O.T. 412, dump type, vacuum tank and a Presvac PV750 pump. (Stock #9277C). **www.vacuumsalesinc.com (888)VAC-UNIT (822-8648).** (PBM)

1997 Ford with Cusco 3,200-gallon DOT certified dump and door liquid vacuum truck. Cat engine with Moro M9 vacuum pump. Runs and pumps excellent. \$37,500. KLM Companies 617-909-9044 (PBM)

2000 International with Cusco High Dump 27", DOT Certified, 412 with vacuum pump, pressure offload as well. Cummins Power with low miles and hours. KLM Companies 617-909-9044. (PBM)

JETTERS - TRAILER



The HotJet II® is a best-selling hot- and cold-water drainline cleaner featuring a 35hp Vanguard engine by Toyota and delivering 10gpm @ 4,000psi that cleans drains up to 300' and 12" in diameter. Priced at \$39,995, the HotJet II® is American made using nonproprietary parts for affordability and ease in serviceability making its return on investment truly impressive. Prices subject to change. **Financing available. 800-624-8186; sales@hotjetusa.com; www.hotjetusa.com (PBM)**

1999 Harben 4016-300 Jet Trailer (Stock #200SC) **(888)VAC-UNIT (822-8648)**
www.vsi rentalsilc.com. (PBM)

JETTERS – TRUCK

2000 Freightliner FL70 with a Mercedes 900 series diesel engine with 187,432 miles and runs and drives good. 6-speed manual transmission. O'Brian model SKJ-620 jetter with a 300 Ford gas engine, 1,200 gallons of fresh water, 500 feet of 1-inch hose. Any questions call Steve 248-345-5960. MI (P12)

JET VACS

2002 International 7400. Pre-owned Vactor 2100 combination jet/vac unit with PD blower And 10 cubic yard debris tank. Mounted on a 2002 International 7400 cab & chassis. Stock # 1138C. \$59,000.00 www.vacuumsalesinc.com (888) VAC-UNIT (822-8648). (PBM)

2014 Peterbilt 367 In Stock Pre-owned Cusco Turbo Vac 3627 High Lift. Carbon steel, D.O.T. Certified with 3,600 CFM blower mounted on 2014 Peterbilt 367 \$119,000.00. Stock# 6648V. www.vacuumsalesinc.com (888) VAC-UNIT (822-8648). (PBM)

LEASE/FINANCING

Western Equipment Finance, a bank-owned direct lender, is committed to continuing to help you prosper. All Equipment Types, New or Used; we have the best rates and terms you deserve. App-Only Financing and credit decisions within an hour. Call the team you can TRUST, Jim Stekl at Western Equipment Finance 701-665-1647. jim.stekl@westernequipmentfinance.com (PBM)

PARTS & COMPONENTS



Clear the Main Line with ease, JnA Main Line Vac. Just hook the line vac to your hose, insert the incoming mainline pipe and watch the line come clean. Works on 3" & 4" pipe. Free shipping in the US. \$139.99. **Order at jnamainlinevac.com. 919-559-9344.** (PBM)

Sell Your Truck Here!
www.pumper.com/classifieds

PORTABLE RESTROOMS

Portable restrooms and hand wash stations for sale in Pennsylvania. 10 grey like new units - \$900.00 each 8 tan units older \$400.00 each. 2 hand wash stations like new \$450 each. 1 handicap unit like new \$1200.00. \$14,300 for all. Used slide in pump unit works good. \$5,000.00 Call Carol 570-760-6505. (P12)

PORTABLE RESTROOM TRAILERS



2015 Rich Restroom Trailer Model CT8520 6 Station, 200-gal Fresh Water tank, Water Heater, Winter Package, Stereo, Heat Strip With AC, Great Shape **Asking \$38,000.00. NOT FOR SALE IN VIRGINIA. 540-309-5288.** (P12)

3 private stalls in the women's and 1 private stall and a urinal in the men's. \$35,000. Mike Allison:931-607-1000. (P12)

2007 Black Tie Optima 5 Station and 2007 Black Tie Optima 7 Station Trailers For Sale. Trailers operate effectively and are in average condition. We rented this year. Also 2005 Olympic 2 Station For Sale. Average Condition. None of these have winter packages or onboard water. 5 Station is \$20,000, 7 Station is \$22,000, and 2 Station is \$8,900. Text Mike at 216-990-6658 for pictures. (P11)

2) Nu Concept trailers each with two VIP units. Everything in good working order, just need batteries. Pictures available, \$3,000 per trailer, Call 845-883-7880. (P12)

2001 Keith Huber International pump truck. 2 Decons, 28' Tonto, 18' Royal, 2001 ASCI, 16' Presidential, 26' Presidential, portable toilet hauler trailers. 315-437-1291, NY (PBM)

PORTABLE RESTROOM TRUCKS

2016 RAM 5500 4x4. 144K mi. 1250/950/300 Alum. Massport. \$49,000 OBO. Northern MN. 218-591-1736 (P12)

Total of 24 toilets and 2 sinks located 35 minutes north of Nashville, TN. 12-PolyJohn, 10-Armal standard and 2 flush models, and 2 Armal sinks. \$150 each or \$3,500 for everything. Call Jason 615-828-3561. (P12)



2005 Ford F-550 6.0 Diesel. Lely Tank 600/300 310,310 miles. **\$8,000. Call Greg at 757-513-5103.** (P12)



2009 International 4400 Max-force DT truck with Allison Automatic transmission. Abernethy portable toilet tank & pump. 152,000 miles. Steel tank. 2-toilet rack hauler. Approx 700-gal sewage/300 fresh water. HXL75 Masport vacuum pressure pump/ or pressure from truck for tank. New back brakes. Good tires. **\$27,500 Mathena Septic Service Inc., 410-239-1228 or email sales@mathenaseptic.com.** (P12)

2015 Freightliner M2-106 non—CDL with New 1,600-gallon (300 water—1300 waste) carbon steel, portable toilet service unit. Stock# 9842V www.vacuumsalesinc.com **(888) VAC-UNIT (822-8648).** (PBM)

New Imperial 1,300 U.S. gallon, portable toilet service unit mounted on a 2022 Ford F550 cab and chassis with a Masport HXL4 pump package. (Stock #14008). **(888)VAC-UNIT (822-8648)**
www.vsi rentalsilc.com. (PBM)



2011 Ford F450. Diesel, auto, 2-wheel drive. New aluminum vac tank, 300-waste, 150-water. HXL2 Masport pump wash down system. **Call JR @ 720-253-8014. CO (PBM)**

2000 International 4700 cab & chassis with a 500 waste/300 freshwater compartment with a Masport HXL4V vacuum pump. (Stock# 0767C) www.vacuumsalesinc.com **(888) VAC-UNIT (822-8648).** (PBM)

PUMPS

Buy & Sell all makes and models, new & used vacuum pumps, blowers, high-pressure water pumps, new and good used replacement parts. Buy discounted pumps online 24/7. Call us for a current inventory list. www.vacuumsalesinc.com, **(888) VAC-UNIT (822-8648).** (PBM)

PUMPS VACUUM

MORO USA. All Top Quality, Large In Stock Inventory! Vacuum Pumps Since 1957 Made to Last !Air > Fan > Liquid Cooled 254-1000 Cfm (Gearbox , Hydraulic , Engine , Electric Motor Driven) Any Brand Vacuum Pump Rebuild Services. Riv-Moro Lever/ Butterfly Valves/ Cam Lock Fittings Moro USA Washdown/Fill Pumps Truck Toolbox Mounted Jetters 4-10 Gpm / 3000 PSI Gearbox ,Gas, Hydraulic Drive High pressure pumps 4 - 128 Gpm Morousa.com 412-787-8400 (P12)

RENTAL EQUIPMENT

2022 Polar Vacuum Trailer: Stainless steel 6,000 gallon, DOT certified double conical with air-ride suspension. Aluminum wheels all positions, full hose trays, OSHA walkways and railings. Vacuum pump option either hydraulic or self-contained. KLM Rentals Inc. 617-909-9044. (PBM)

Liquid vacs, wet/dry industrial vacs, combination jetter/vacs, vacuum street sweeper & catch basin cleaner, truck & trailer mounted jetters. All available for daily, weekly, monthly, and yearly rentals. VSI Rentals, LLC, **(888)VAC-UNIT (822-8648)**
www.vsi rentalsilc.com. (PBM)

SEPTIC TRUCKS



1997 International 9400 with 3,500-gal tank. 529k miles on the Detroit DT60 manual trans. Moro pump. This truck was included in a competitor buyout and is now extra. Everything works. **\$30,000 OBO. Chris 505-870-4216 or williams-plumbing@hotmail.com.** (P01)



2016 International 4300. Cummins Allison Auto. 64,500 miles. 33,000 GBW. New 2500 Steel Vac Tank. New Morrow water cooled back pump. 530 CFM. **Call JR @ 720-253-8014. CO (PBM)**



2006 Sterling L7500 Septic Tank Truck. 3,600-gallon. Cat Engine. Manual Trans. 174,000 miles. Masport Pump. New Vanes. Tires. Rear Springs. **\$38,000 obo. Call 317-773-7996 (P01)**



2007 Sterling Allison Auto Trans Mercedes Engine-450 HP 348,000 miles 20K Fronts/46K Rears Aluminum Rims/90% Virgin Rubber. 2009 Imperial Tank. 4,000-gallon w/hoist / 36" Rear man-way/Plastic Liner/Wittig RF150 Liquid Cooled Vac Pump/3000 PSI jetter w/ electric reel/175 gallon fresh water head & heated valves. Truck & Tank have been paired for 2 years-unit is in EXCELLENT condition. **\$79,000.00. 715-572-3313 (P01)**



2001 International vacuum truck. Cannot be used in California because of smog laws. Automatic. DT466E. 2 Axle. Tank size approximately 2,300-gallons. Thompson vacuum pump. 6-cylinder. New brake job. Runs very good & is ready to go to work. **\$25,000.00 OBO Text or call 661-599-7336. (P12)**



2014 Freightliner 2,500-gallon waste tank with jetter, Model M2. Price **\$69,500. Call Andrew at 561-302-7195. (P12)**



2002 Kenworth T800. 4,500-gallon Andert tank. Wittig RFL100 pump. Cummins N14 370hp. Eaton 8LL. 75,600GVW. Heated valves. SeaLevel digital tank gauge. Tires 90%, brakes 75%, 350k miles. **Runs great and ready to work. \$50,000. Call or text 860-573-0057. (P12)**



1998 Kenworth T800. N14 Cummins. 8LL. Tri axle. Air ride. 265,000 original miles. Double frame factory pump truck. Service records since new. New 4,200-gallon tank in 2020. Rebuilt Utile 825 pump. Heated valves, cab panted 2017, new seat, new clutch, tires and brakes 80%. **\$85,000. Call: 860-598-9525, Email: blair@septicworksct.com (P12)**



94 International M11 Cummins. 350h.p, 10-spd. Jake. Cruise. 3,300-gal tank with hoist and full open rear door. 540cfm Moro vac-pump. Good running and driving truck. Ready to work. **\$24k. Financing and Delivery options Available. Call Hull's Truck Bodies, LLC at 740-820-5338. (P12)**



2013 Freightliner SD septic truck for sale. Detroit Diesel DD13. Masport Pump. Truck is in good condition. **Call Cory for more info 330-807-1490. \$80,000 (P12)**



2013 Kenworth PX8. 214k miles. 3000 series Allison. AC. Cruise. New 2,500-gal tank. Stainless steel hoses/trays. Fruitland 500 vac-pump. New paint and alum wheels. Very nice truck. **\$62k. Delivery and Financing options Available Call Hull's Truck Bodies LLC at 740-820-5338. (P12)**



2008 330 Peterbilt 2600 1Gww Px-6 220Hp Allison 2500RDS. 220,485 miles. One owner. Not fleet. 1,500-gal waste/110 s.s.water. Abernethy tank Masport HXL75 2500 pressure washer in box 100'3" hose 75% tires new paint **\$39,500. 870-238-9481. (P12)**



Very nice 07 international 8600 with a iso cummings and a 10-speed. Tank on hoist with full opening rear hatch. 2,800-gallon, 500 c.f.m. Fruitland air cooled pump. New tires all around. 180,000 on rering job. Ready to work, runs excellent. **Call 608-558-0870. \$52,000. (P12)**

Submit your classified ad online!
www.pumper.com/classifieds/place_ad



2013 367 Peterbilt- 500 15X Cummins. 13-speed air ride suspension. 245,606 miles. 5,000-gallon Imperial tank. 400 Masport liquid cooled pump, rebuilt in June 2021. 4" front air valve. 4" NVE re-buildable load valve. 6" air dump valve. 1" lime valve. 2" moisture trap valve. All valves with heat jackets. 4 toolboxes. Water tank. Sea level gauge. New clutch in Sept 2021. **Contact Ken Begalke @ 715-595-4892. Asking \$92,000. (P12)**



2003 FL70 Freightliner 2,500-gallon tank. 3126 Cat engine. 287,000 miles. Tank needs work. Asking **\$ 20,000. Call (585) 615-5087. Located in Rochester NY (P12)**

1997 International 4 x 2 Pump Truck. 3,000-gallons, 200 gallons in front. New jetter and vacuum pump. Apprx 237,000 miles. Phone: 252-435-7666. Email: hines-septic252@gmail.com (P12)

New 4,000 U.S. gallon, aluminum, vacuum tank. Mounted on a 2022 Peterbilt 348 cab and chassis w/ a NVE Challenger 887 vacuum pressure pump package. Stock #14006 **(888)VAC-UNIT (822-8648) www.vsirrentalsllc.com. (PBM)**



2006 International 7400 with 3,800-Gallon Tank. 299,600 miles. Standard Transmission. Ready to work. **\$45,000. Mike at 216-990-6658 (P12)**

2009 Kenworth T370. 3,300-gallon steel tank. Jurop R-260 pump w/digital gallon gauge. 3" pump out, 4" dump. Cummings 330 10-speed transmission w/ 492,119 mi. Fuel tank is 75 gallons. Asking \$42,500.00 OBO. Please text or call 559-647-2844 or email msquirk55@gmail.com for more info/pics. (P12)



2003 Peterbuilt 2500 Gallon Septic Truck with Hoist/Dump Body. Great shape and runs daily. 8 Speed, CAT motor. **\$49,900. 216-990-6658 (P12)**



95 Freightliner. 5,000-gallon. Air Ride motor rebuild 3k ago. 2-year warranty on tank from manufacturer. Morrow liquid cooled vac. \$39,500 obo. 93 International Allison automatic with a Built 99 dominator tank dump 3,500-gallons **\$27,500 obo. Both ready to work. 614-778-63 (P12)**



Selling my 2009 5900i International Paystar vacuum truck. C-15 cat. 18-speed. 97,000 miles. Newer tires all around. Heavy front, full lockers. 3,360-gallon tank, high pressure fresh-water system, Brand new Masport 407 c.f.m. air cooled vac pump. Runs excellent. Ready to work. Going out of business after 65 years. **Asking \$65,000, call Don 608-558-0870. Thanks for your interest. (P12)**



08 NON CDL Allison automatic International. 2,000-gallon build 2015 Morro 300 cfm def Exhaust has been deleted there is still straight pipe through def \$43,500 obo. 99 Mitsubishi NON CDL Allison automatic 1,800-gallon both truck right 200,000 Fruitland 500 **\$29,500 obo both trucks ready to work excellent condition. 614-778-6368. Columbus Ohio. (P12)**

2001 Freightliner cab & chassis with a Keith Huber, 4,000 gallon c/s full open rear door dump unit. Stock # 7896C.

www.vacuumsalesinc.com (888)VAC-UNIT (822-8648). (PBM)

2001 Freightliner C-120 cab & chassis with a 2006 Presvac 3,200 U.S. gallon, C/S, dump type unit with a Presvac PV750 pump. (Stock #0480C). **www.vacuumsalesinc.com (888)VAC-UNIT (822-8648). (PBM)**



2019 Freightliner. 6.7 Cummins. 21k miles. Allison Auto. AC. Cruise. New 2,500-gal tank, stainless hometrays, Jupor R260 vac-pump, paint and alum wheels. Very clean low mile truck. \$85,000. Financing & Delivery Options Available **Call Hull's Truck Bodies, LLC at 740-820-5338 (P12)**



2006 International 8400 series 624,000 miles Cummins engine. The tank and pump are 4 years old. Heated valves. Gallon meter. Comes with hoses. Always maintained. Good tires. No issues it's ready to work. **Call or text 937-926-1482 anytime. Asking \$32,000. OH (P12)**

1997 Peterbilt 378 cab & chassis with a Presvac 3,000 U.S. gallon, C/S, vacuum tank & Masport HXL15WV water cooled pump. (Stock #6625C). **www.vacuumsalesinc.com (888)VAC-UNIT (822-8648). (PBM)**

Stainless steel 2010 Polar 3,600-gallon tank ready to mount on your chassis or sell outright. 20" rear manway, two 4" inch rear valves with full stainless hose trays. KLM Companies 617-909-9044 **(PBM)**

Pre-owned 1984 Mack R686ST cab and chassis with a 3,000 U.S. gallon, carbon steel, vacuum tank unit. (Stock # 6115C). **www.vacuumsalesinc.com (888)VAC-UNIT (822-8648) (PBM)**

Submit your classified ad online! www.pumper.com/classifieds/place_ad



2013 Freightliner Cascadia, Cummins ISX 450 hp, automatic, 487k miles, NEW 3,500-gallon vacuum tank, interior tank lined and coated, NEW Masport vacuum pump, aluminum hose trays, 36-inch rear manway. **\$70,000. Phoenix Truck Center - Atlanta, GA 404-844-8968. (PBM)**



2012 Mack GU713 Granite, MP8, 18-spd, 340,578 miles, original heavy spec truck, 82,000lb. gvw, 18,000lb. front axle/44,000lb. camelback rears suspension/third axle, jake brake, 4,650-gallon vacuum tank, Masport pump, excellent mechanically, truck serviced and DOT inspected. **\$75,500. 404-844-8968. (PBM)**

SERVICE AND REPAIR

Dynamic Repairs - Inspection Camera Repairs: 48-hr. turn-around time. General Wire, Ratch, Ridgid, Hathorn, Electric Eel, Gator Cams, Insight Vision, Vision Intruders. Quality service on all brands. Rental equipment available. For more info. call Jack at 973-478-0893. Lodi, New Jersey. www.dynamicrepairs.biz **(PBM)**

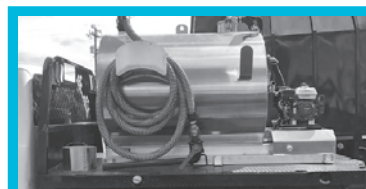
SLIDE IN UNITS



Slide in units for sale!! 200/100 Carbon Steel \$9,800. And we also have aluminum 300/150 \$12,900. For more info about slide in's Please contact us at AMERPIUMP MFG LLC **918-438-2953 or email us OFFICE@AMERPIUMP.MFG.COM and ask to speak with C.J. (P12)**



550-gallon steel slide in, 100-gallon poly water tank. Masport HXL-3V vacuum pump w/9-HP Honda engine. 30' of 2" waste hose, 50' garden hose on hose reel. Toico water pump, 3" discharge. 7,000-lb GVWR tandem axle trailer. **\$16,029. Call Jamie 800-558-2945, salesinfo@imperialind.com. (PBM)**



NEW aluminum slide-in tanks. 2 available. 450-gallon (300/150), Honda motors, Masport pumps. **Call JR @ 720-253-8014 or Mike @ 303-478-4796, CO. (PBM)**

TANKS



2,800-gallon aluminum single compartment, non-code, 64" OD X 18' overall length, two 3/8" 5454 aluminum heads, three 1/4" flanged and dished baffles, two 20" manways with stainless lids, one 12" Chandler primary with 4" outlet, one 6" discharge with lever valve, one 4" load line with lever valve, three 5" aluminum sight eyes, full length hose trays (7" deep), DOT light package. **\$31,900. Call 479-619-8226 (P12)**



Frac Tanks from Geneva Equipment. Financing available! Delivered to your door! Perfect for: Portable sanitation storage; Dewatering; Wastewater storage and treatment; Hydroexcavation; Storm-water runoff. Geneva has over 1,000+ frac tanks available, epoxy lined and EPA compliant. **Call 855-202-7872 or sales@genevaequipment.com www.genevaequipment.com (PBM)**



One used steel vac tank 1,500/500 w/ Moro hydraulic AC4 vac pump. **Call JR @ 720-253-8014. CO (PBM)**



Tanks in stock, ready to ship out or let us install it for you. Restroom, septic, grease in stock with mounting kits. **Call 888-6VACTANK today! (PBM)**



Any size tank can be custom built. Slide-in tanks in all sizes. Plug and Play vacuum pumps are also available. **Call Rodney Lane 270-832-3793 for pricing. (PBM)**



Used VAC Tanks. 4,200-gallon - \$9,900. Gasco Triplex 3364-AL - \$750. **269-751-5167. (PBM)**

TANK TRAILER



CUSTOM tanks and trailers manufactured. Installation on your chassis available. **Check out our website: americantankandtrailer.com or call 479-616-7822 (P01)**

LIST YOUR TRUCKS & EQUIPMENT FOR SALE!
www.pumper.com/classifieds/place_ad

TANK TRAILER TOOLS



1981 6,400-gallon tanker trailer. Well maintained, used daily to haul frac water. Recently relined ready to work. Downsizing business - **text is best 713-992-0916 -12,500.00 OBO (P12)**

TOOLS

T&T Tools: Probes, Hooks. Probes feature steel shafts with threaded and hardened tips. The insulated Mighty Probe™ tested to 50,000 volts. Top Poppers™ open manhole covers easily. Free catalog. www.TandT-tools.com. Phone 800-521-6893. (PBM)

Crust Busters - Portable, lightweight machine guaranteed to mix up septic tanks and grease traps! Save time and money! www.crustbusters.com, 1-888-878-2296. (PBM)

TOYS

Septic pumper and vacuum die-cast toy trucks in your choice of colors and logos. Several cabs available. Call 877-450-2100, write to Granite State Collectibles, PO Box 440, New Ipswich, NH 03071; or www.granitestatecollectibles.com. (PBM)

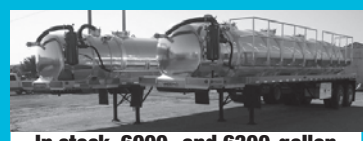
TRAILERS

2007 Dragon 5460 c/s vacuum tank trailer. Stock # 2173C. www.vacuumsalesinc.com (888) VAC-UNIT (822-8648) (PBM)

TRAILERS-VACUUM/TANKER



2013 Freightliner Cascadia truck with 2012 Galylean vacuum trailer 130-barrel steel. Truck has a 13-speed transmission and Dd13 engine with 394k miles and hydraulic driven Fruitland vacuum/pressure pump. Everything works as it should. Truck and trailer just inspected. **Asking \$65,000 OBO. 484-576-6574. (P12)**



In stock, 6000- and 6300-gallon aluminum single-compartment Imperial vacuum trailers. **Call Cory 800-558-2945 Ext. 426 (PBM)**

TRUCKS (DUMP, SEPTIC, MISC.)



1993 Freightliner cab over Sleeper 6-cylinder caterpillar. Air ride. 3,000-Gallon tank like new. 3-inch vain pump **\$30,000 661-340-9527 (P12)**



2019 Freightliner 122SD Heavy Duty Quad Axle Vacuum Truck, Morocco 4,600-gallon steel tank. This truck only has 89K miles and has factory EW4 warranty left through March 2023. Equipped with a DD13 engine, 505 HP and an 18-speed Eaton transmission. It is double framed. 46K suspension. **READY TO WORK!! For more information give Lee Saylor from Excel Truck Group a call at 540-453-2483. (P12)**



2005 Hino Grease Trap Pumper / High Pressure Jetter Cleaning Truck - - - Mileage: 161,0020 - - - Ideal Truck for Restaurants, Schools and Super Market Grease Trap Cleaning and Jetting - - - Price: **\$25,000 - - - Contact: Frank King 978-452-7750. (PBM)**



1999 international 4700 dt466. 6-speed manual transmission. 193,000 miles. 1,400-gallon vac tank with fold down toilet carrier. Dual side service 2" and 4" or 3" discharge. Battioni mec 6500 pump 240cfm. Truck was used to collect used cooking oil and service grease traps. Everything has been maintained and truck has been indoor garage kept. Has new tires. Everything runs as it should. **Asking \$20,000 obo. call or text 609-902-5093. (P12)**



2013 International, 52,000 GVW, 270 HP, only 77,000 miles, equipped with NEW hydraulic set bed, 12,000 lb capacity. **\$64,000. Call Dewayne 256-338-4985. (PBM)**

TV INSPECTION



2017 Mercedes Sprinter 177 Diesel. Subsite CCTV inspection equip. MEPS powered. Steerable transport pan and tilt camera. 58,000 miles. **\$105,000. Steve 972-816-3664. (P01)**

Pumper CLASSIFIEDS WORK!

Pumper

AVERAGE MONTHLY CIRCULATION REACHES **20,000+ READERS!**

PLACE YOUR AD ONLINE AT WWW.PUMPER.COM - IT'S ALWAYS THERE TO MEET YOUR BUSY SCHEDULE



2000 GMC Work horse aluminum step van. \$39,888. 6.5L turbo diesel. Only 52K government owned miles. Aluminum body. Q CUES sewer inspection camera. Pipeline Cummins Onan diesel generator. **Call today. 561-672-9005 FL (P12)**

VACUUM EQUIPMENT



2007 vacuum box. Water tight. Excellent condition. 25-yarder, super duty vac box, heavy rear door. **Call Christine @ 631-567-6545 \$7,500. (P12)**



2006 International Vactor 7600. 241,578 miles. Excellent working condition. Priced to sell. **Call Christine @ 631-567-6545 \$68,000. (P12)**



2003 Kenworth vactor truck. Excellent working condition. CFM. Model T800. 38,860 miles. **Call Christine @ 631-567-6545 \$39,000. (P12)**

LIST YOUR EQUIPMENT

IN THE PAGES OF PUMPER!

www.pumper.com/classifieds/place_ad



2004 Sterling Vactor Truck. Excellent working condition. 160,335 miles. Model L7501. **Call Christine @ 631-567-6545 \$29,000. (P12)**



2007 Vacuum Truck International 4400. 23,184 miles. Ready to work. Excellent condition. **Call Christine @ 631-567-6545 (P12)**

VACUUM LOADERS

2003 SuperSucker vacuum loader, 27' blower with spare blower for the truck. 400 HP with Fuller 14708LL trans, 44k rears 20k front. Very clean and runs excellent. KLM Companies 617-909-9044. (PBM)

2000 Guzzler Ace International chassis with CAT engine. Great running truck and blower. Tank body was recently replaced brand new from Guzzler. KLM Companies 617-909-9044. (PBM)

2015 Freightliner 114SD cab & chassis with a VACALL AVR-18 industrial vacuum loader. (Available for rent or purchase). (Stock # 039R). **www.vacuumsalesinc.com (888)VAC-UNIT (822-8648). (PBM)**

WANTED

TRUCK CENTER OF AMERICA

TRUCK CENTER OF AMERICA is in need of running and non-running inventory and will offer TOP DOLLAR for underutilized equipment. We take delivery anywhere in the USA. **Call or Email LEWIS NERMAN (913) 696-1300 Lewis@TruckCenterofAmerica.com (P12)**

CLASSIFIEDS!
www.pumper.com



GET
EMAIL NEWS ALERTS FOR
Pumper
Go to
pumper.com/alerts

LIST YOUR TRUCKS AND EQUIPMENT FOR SALE IN **PUMPER CLASSIFIEDS!**

www.pumper.com/classifieds/place_ad



DEDICATED TO THE LIQUID WASTE INDUSTRY.

Pumper



FILL *a job opening*
BID OUT *an upcoming job*
ANNOUNCE *contracted services offered*
SELL *used equipment*
OBTAIN *a position wanted*
FIND IT IN THE CLASSIFIEDS!
In Pumper magazine and on the web. Pumper.com



TO BETTER SERVE YOU WE ARE GROWING!

ANNOUNCING OUR BRAND NEW STATE OF THE ART WAREHOUSE+PRO STORE
OPENING EARLY FALL- FEATURING A SHOPPING EXPERIENCE THAT IS GUARANTEED TO BLOW YOUR MIND!



PRO STORE

- 6 VIDEO GAME PLAYING STATIONS ■ TV CLOUDS
- 10 ROBOTS FOR CUSTOMERS TO DRIVE THROUGH OUR STORE LOOK AND PURCHASE
- COFFEE BAR WITH SEATING ■ SNACKS
- HYDRAULIC BAR- WATCH US MAKE YOUR HOSE
- DEMO/ ASSEMBLY BENCHES- WATCH YOUR ORDER BEING ASSEMBLED AND ASK QUESTIONS
- TRUCK DEMO AREAS WHERE VENDORS WILL DISPLAY THEIR TRUCK BUILDS AND ACCESSORIES, INCLUDING VACUUM PUMPS



WAREHOUSE

VIRGINIA - 52,600 SF TO SERVE YOU
ARKANSAS 30,800 SF TO SERVE YOU
TOTAL SF -87,000 SF

VARCOHYDRO.COM • TOLL FREE 866-872-1224 • VARCOSUPPLY.COM



2022 INTERNATIONAL

4000-Gallon Aluminum Tank
NVE4307 Blower
Allison 3000RDS Transmission
Cummins L9 370HP Engine

STOCK #108626
\$162,950+FET



2022 FREIGHTLINER

4000-Gallon Aluminum Tank
NVE4307 Blower
Allison 3000RDS Transmission
Cummins L9 350HP Engine

STOCK #106586
\$162,993+FET



2022 WESTERN STAR

4000-Gallon Aluminum Tank
NVE4310 Blower
Allison 3000RDS Transmission
Cummins L9 360HP Engine

STOCK #108804
\$178,217+FET

**LOOKING FOR THE PERFECT GIFT
FOR THE PUMPER IN YOUR LIFE?**

CALL THE PREMIER TANK MANUFACTURER!



**IMPERIAL
INDUSTRIES INC**

1-800-558-2945
imperialind.com
septictruckcenter.com



PRESVAC SYSTEMS

STEP UP TO A BLOWER WITH THE PRESVAC POWERVAC MINI



Powervac Mini

- > Load Deep Pulls And/Or Long Distances With Ease
- > Continuous Duty Performance At Maximum Vacuum
- > Oil Free Blower Exhaust Air
- > Rapid Tank Evacuation And Extremely Short Recovery Times
- > Blower Options: Robuschi, Hibon, National Vacuum & Jurop
- > CFM Range: 500 – 1650 CFM
- > No Loss Of Payload Capacity
- > Hydraulic/Belt/ Gearbox Drive Via Chassis PTO
- > With The Many Options We Provide, We Create A Unique Solution Tailored To Your Requirements

Quality...
...is our Trademark

Established 1972

PRESVAC

4131 Morris Drive
Burlington, Ontario, Canada L7L 5L5
Fax: 905-681-0411

Nationwide Sales & Service

800-387-7763 | 905-637-2353 | www.presvac.com