

DEDICATED TO THE LIQUID WASTE INDUSTRY

Pumper®

December 2020 | pumper.com



ince 1968

T 524748

RYAN

PUMPING UP HIS BUSINESS

Michigan's Ryan Carey brings smart diversification by adding septic service to his busy forest products and excavating company

PAGE 18



PRODUCT FOCUS

SEPTIC SYSTEMS AND MAINTENANCE

PAGE 56



Merry Christmas & Happy Holidays
from

PJ POLYJOHN[®]

ALWAYS HAVE BEEN & ALWAYS WILL BE there when you need us

2500 GASPAR AVE., WHITING, IN 46394

PJPUMPER.COM | 800.292.1305



DOWNLOAD OUR GUIDES

PJProductGuide.com | PJBuysGuide.com

NVE

National Vacuum Equipment

Challenger Series

VACUUM PUMPS & BLOWERS

BLOWER TECHNOLOGY

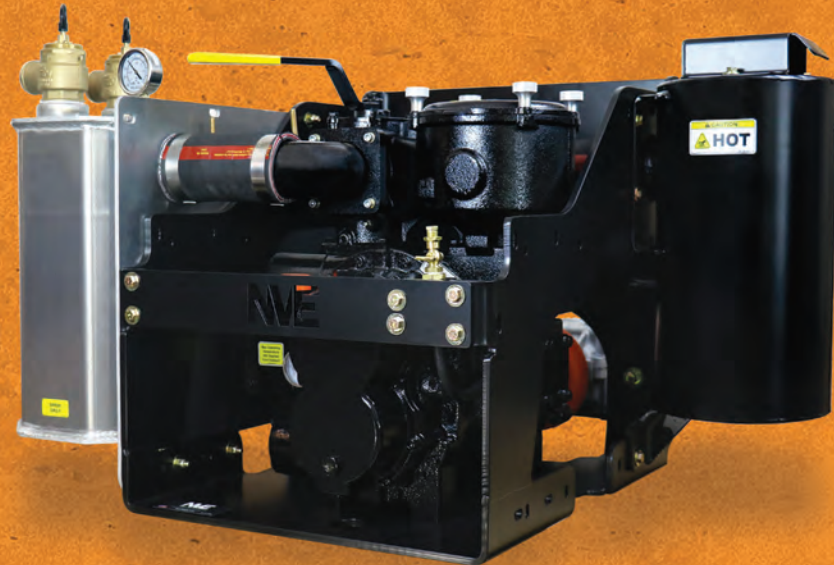
FOR THE EVERYDAY PUMPER



MADE IN THE USA



B250 BLOWER | 250 CFM
Oil-Less Operation = No Smoke!



B500 BLOWER | 431 CFM
Oil-Less Operation = No Smoke!

GRAB YOUR **\$200** REBATE

There is still time, when you purchase one of NVE's B250 or B500 blowers, to receive a \$200 rebate! Visit <https://natvac.com/rebate/> and electronically fill out the form to receive your rebate. Terms and Conditions apply, see website for details.



*Offer valid 11/01/20 - 12/31/20. Limit one rebate per customer.

800-253-5500 | www.natvac.com



DEWATERING

Dewatering Unit • Polymer Injection System
Sludge Pump • Hoses • Working Platform • Hydraulic Trailer

» Pass the paint filter test in 24 hours

» No waiting, Equipment is in stock

» Visitors welcome at our dewatering facilities

*Don't settle for less ...
demand the best - ADS*

*We do one thing to perfection —
Dewater Liquid Waste!*



**AQUA-Zyme
Disposal Systems**

Call us at (979) 245-5656
zymme@aqua-zyme.com
www.aqua-zyme.com

**FINANCING
AVAILABLE**

27th TRUCKS INC.
PH: 305.835.9030 • EMAIL: ALAN@27TH-TRUCKS.COM



www.27TH-TRUCKS.com

Contact Alan @ 786-908-5436

1 LEFT!



'15 Freightliner Cascadia

Allison Automatic, Cummins Engine, 205,366 Miles,
New 4000 Gal. Carbon Steel Tank
New Masport Hydra Plug & Play



'15 Int'l

Cummins Engine, Automatic
New 2500 Gal. Carbon Steel Tank
New Masport Viper Pump - **\$65,000**

**CUMMINS
ENGINE**



'15 Int'l 4300

Cummins Engine, Automatic,
Air brakes, **Under CDL**,
New 2000 Gal. Steel Tank
New Moro Pump PM70
\$63,000

**2
AVAILABLE**



'13 Freightliner M2 112

DD13, 350 Hp, 10 Speed,
305,000 Miles, Original Double Frame
New 4000 Gal. Steel Tank
New Masport Hydra Plug and Play
58,000 GVW
IN PRODUCTION \$80,000



**DASHING THROUGH THE SNOW,
OUR TRANSWAY TRUCK'S A HIT,
OVER THE ROADS WE GO,
PUMPING LOADS OF SH*T.**



Merry Christmas to you & your family from our **Transway** family.



CUSTOM BUILT. DRIVEN BY YOU.



18 Pumping Up His Business

- Peter Kenter

Michigan's Ryan Carey brings smart diversification by adding septic service to his busy forest products and excavating company.

ON THE COVER: Sodergren Septic Service and J. Carey Inc. provide a myriad of services for residential and commercial customers in Michigan's Upper Peninsula. Owner Ryan Carey is shown with an International service truck built out by Imperial Industries and carrying a Fruitland pump. (Photo by Natalie Larson)

10 Between the Lines: When Disaster Struck, This Michigan Pumping Crew Jumped Into Action

Pulling up and seeing the service truck mangled and resting on the river bottom was a pumper's worst nightmare.

- Jim Kneiszal

14 @pumper.com

Check out the latest online-only content at the *Pumper* website.

28 2020 Classy Truck: Pumper Proud!

The 2020 Classy Truck winners help septic service contractors amaze their customers and maintain professional standards in the field.

- Jim Kneiszal

32 Septic System Answer Man: Let's Probe the Outer Limits of Biomat Benefits

How slow is too slow when effluent starts to enter the clogging zone?

- Jim Anderson

36 Money Manager: Tax Relief Available For Small Businesses Providing Paid Leave During Pandemic

The rules aim to help employers keep workers on the payroll while ensuring that employees do not have to choose between a paycheck and public health measures.

- Kyle Rogers

40 Rules & Regs:

Colorado residents concerned less stringent development rules will harm water quality

- David Steinkraus

44 Building the Business: Connecting With Customers Through the Keyboard

Don't let your fingers get ahead of your brain if you add a chat service to your website.

- Kate Zabriskie

48 States Snapshot: Promoting Professional Training and Certification in Manitoba

Installers and pumpers want to play an important role in writing new provincial wastewater policy.

50 Classy Truck of the Month

We feature Dale Miller & Sons Inc., Fawn Grove, Pennsylvania

52 Associations List

56 Product Focus

Septic Systems and Maintenance
- Craig Mandli

68 Case Studies

Septic Systems and Maintenance
- Craig Mandli

72 Product News

Product Spotlight: Locator adds GPS positioning for added crew efficiency

74 Industry News

Coming in JANUARY 2021

SPECIAL ISSUE: INDUSTRIAL SERVICES

- **CONTRACTOR PROFILE:**
Realizing a dream in Maryland
- **ANSWER MAN:**
Biomat in pressure distribution

COLE Publishing Inc.
1720 Maple Lake Dam Rd.
PO Box 220
Three Lakes, WI 54562

© Copyright 2020 COLE Publishing Inc.
No part may be reproduced without permission of the publisher.
In U.S. or Canada call toll-free 800-257-7222. Elsewhere call 715-546-3346.
Email: info@pumper.com • Website: www.pumper.com
Fax: 715-546-3786

Office hours 7:30 a.m.-5:00 p.m. Central Time, Monday - Friday

SUBSCRIPTION INFORMATION: A one-year (12 issue) subscription to *Pumper* in the United States, Canada and Mexico is free to qualified subscribers. Subscriptions to all other foreign countries cost \$150 per year (\$290 for two years). Subscribers are guaranteed monthly delivery of the magazine. To subscribe please visit pumper.com or send company name, mailing address, phone number and check or money order (U.S. funds payable to COLE Publishing Inc.) to the address above. MasterCard, VISA, Discover and American Express are also accepted. Supply credit card information with your subscription order.

Our subscriber list is occasionally made available to carefully selected companies whose products or services may be of interest to you. Your privacy is important to us. If you prefer not to be a part of these lists, please contact Holly Gensler at holly.gensler@colepublishing.com

CLASSIFIED ADVERTISING: Submit classified ads online at www.pumper.com/order/classifieds. Minimum rate of \$25 for 20 words; \$1 per each additional word. Include a photo for an additional \$125. All classified advertising must be paid in advance. **DEADLINE:** Classified ads must be received by the tenth of the month for insertion in the next month's edition. **PHONE-IN ADS ARE NOT ACCEPTED.** Fax to 715-546-3786 only if charging to MasterCard, VISA, Discover or Amex. Include all credit card information and your phone number (with area code). Mail with check payable to COLE Publishing Inc. to the address above. **CLASSIFIED ADVERTISING APPEARS NATIONWIDE AND ON THE INTERNET.** Not responsible for errors beyond first insertion.



Jim Flory Winnie May

DISPLAY ADVERTISING: Email Jim Flory at jim.flory@colepublishing.com or Winnie May at winnie.may@colepublishing.com or call 800-994-7990. Publisher reserves the right to reject advertising, which in its opinion is misleading, unfair or incompatible with the character of the publication.

CONTROLLED CIRCULATION: 20,500 per month. This figure includes all circulation regions (nationwide) and international distribution.

REPRINTS AND BACK ISSUES: Visit www.pumper.com/order/reprints for options and pricing. To order reprints, call Jeff Lane at 800-257-7222 (715-546-3346) or email jeff.lane@colepublishing.com. To order back issues, call Holly Gensler at 800-257-7222 (715-546-3346) or email holly.gensler@colepublishing.com.



Live demonstrations and operational equipment for the water and wastewater industries!

weqfair.com | 866-933-2653

40+ TRUCKS READY TO BUILD!



▶ **2010 International 866**

200k Miles, 400 HP, 10 Spd., 4,000 Gal., 200 Gal. Water Compartment, NVE 607 Pump, Hoist System, Jetter System



▶ **2012 Peterbilt 365**

32k Original Miles, 450 HP, Cummins ISX, 8LL// 5,000 Gal., NVE 866 Pump, Hoist System, Jetter System, 20k Steerable Lift Axle

Available Options:

- Hydraulic Hoist System
- Rear Opening Door
- Multiple Compartments
- Heated Valves
- Electronic Gallon Indicator
- Interior Plumbing
- Fluid Level Indicator
- Pump & Blowers
- Interior Epoxy Coated Tank
- Lift Axles
- Jetter Box
- Heavy Duty Jetter System
- 20K Front Axles



▶ **2008 Peterbilt 335**

100k Miles, 290 HP, Cummins ISM, Auto, 2,500 Gal., 500 Gal., Water Compartment, NVE 607 Pump, Aluminum Wheels (opt)



▶ **2012 Peterbilt 365**

72k Original Miles, 450 HP, Cummins ISX, 8LL, 4,000 Gallon Tank, NVE 607 Pump, Jake Brake



▶ **2014 International ProStar**

5,000 Gal., SOLD TO EXPORT



▶ **2014 Kenworth T800**

450 HP, Cummins, Auto, Big Pump, 20K Fronts, 20K Lift Axle

27th TRUCKS INC.
27th Trucks 4
A Corp/Rooter-Man 54
A.R. North America, Inc. 71

ABBOTT RUBBER COMPANY, INC.
Abbott Rubber Co., Inc. 34
ABC Leasing & Financing 75

AlluPro
AlluPro, LLC 33

American Tank Company 67

AQUA-Zyme
AQUA-Zyme Disposal Sys. 4

arcan
Arcan Enterprises, Inc. 73

BEST ENTERPRISES
Best Enterprises, Inc. 63

BrenLin
Brenlin Company, Inc. 54

CAM
Cam Spray 67

Cape Cod Biochemical Co. .. 51

Comforts of Home
Comforts of Home Service 16

CRO
Cro Software Solutions 35

CRUST BUSTERS
Crust Busters 65

DAVIDSON TANK
Davidson Tank 65

DA
Deal Assoc. 75

Ecological Laboratories 61
Eljen Corporation 26

Wallenstein
Elmira Machine Industries/
Wallenstein Vacuum 43

EAM
Engine & Accessory, Inc. 37

FLOWMARK VACUUM TRUCKS
FlowMark Vacuum Trucks ... 87
FMI Truck Sales & Service .. 16

FRUITLAND
Fruitland Manufacturing 17

GapVax
GapVax, Inc. 25

HOUSE OF IMPORTS INC.
House of Imports 7

IMPERIAL INDUSTRIES
Imperial Industries, Inc. . 13, 50

INTEGRITY TANK
Integrity Tank Sales & Svc... 38

Iron-Vac Truck Sales 33

ITI Trailers & Truck Bodies .. 69
Jet Inc. 16

KeeVac
KeeVac Industries, Inc. 39
Key Commercial Corp. 68

LANE'S VACUUM TANK, INC.
Lane's Vacuum Tank, Inc. 57

LMT inc.
LMT, Inc. 75

Marsh Industrial 61

MASPORT
Masport, Inc. 49

EXPLORER
McKee Technologies 43
Mid-State Truck Service 53

MRP
Milwaukee Rubber Products 42
MyTana LLC 21

NAWT
N.A.W.T. 74

National Truck Center
National Truck Center 9

NVE
National Vacuum Equipment . 3

NUCONCEPTS 38
Phoenix Truck Center 31

pikrite
Pik Rite, Inc. 73

POLYJOHN
PolyJohn 2

PortaLogix
PortaLogix 65

PL POWER BOOSTER BY PRESSURE LIFT
Pressure Lift Corporation 8

PRESVAC
Presvac Systems 88

Sumit
Ritam Technologies LLC 68

ROEDER
Robinson Vacuum Tanks 19
ROEDA 73

Roth
Roth North America 61

Sansom INDUSTRIES
Sansom Industries, Inc. 30

Satellite
Satellite Industries 15

ScreenC O systems
ScreenC O Systems, LLC 55

SIM/TECH
Sim/Tech Filter, Inc. 38

THE SLIDE IN WAREHOUSE
Slide-In Warehouse 71

Specialty B Sales 54

T&T TOOLS
T&T Tools, Inc. 42

T.S.F. Company, Inc. 47

TANK WORLD CORP
Tank World Corp. 45

TankTec
Tank Tec 86

TTS
Transport Truck Sales, Inc. 23

TRANSWAY SYSTEMS
Transway Systems, Inc. 5

Truck Country 46

TSI
TSI Tank Services, Inc. 26

TUF-TITE
TUF-TITE, Inc. 27, 72

ultraSHORE PRODUCTS
Ultra Shore 30

vacutrux
Vacutrux Limited 43

VSI
Vacuum Sales, Inc. 30

VARCO
VARCO 41

WALEX
Walex Products Company. . 59

WE
Wee Engineer, Inc. 34

Westmor Ltd. 46

Classifieds 78-84
Marketplace 76-77

REGIONAL ADVERTISERS

Midwest Supplement

(after page 50)

dvance
Advance Pump & Equipment. 3

MFS
Lincoln Center Manufacturing/
Marengo Fabricated Steel. 1

Navitas Credit Corp. 4

-RIDER-
Rider Agri Sales & Service 2

Eastern Supplement

(after page 50)

dvance
Advance Pump & Equipment. 3

A
Ander, Inc. 2

MFS
Lincoln Center Manufacturing/
Marengo Fabricated Steel .. 1

Navitas Credit Corp. 4

VSI
Vacuum Sales, Inc. 2

Pressure Lift Corporation's POWER BOOSTER

UNLIMITED VERTICAL LIFT

Perfect for Hard to Reach Septic Tanks, Grease Traps, Lift Stations with Deep Vertical Lift Including Any Deep and/or Difficult Access Tanks & Much More

The Power Booster® provides limitless vertical lift, faster loading times, keeps pumps cooler, cuts maintenance costs, decreases pump wear and tear, and reduces the potential for back injuries. No more burping the hose, let the Power Booster® do the work for you.

It cuts time off your daily operations leaving more time to generate more revenue. Pump deeper, pump faster with a Power Booster®.

Go FOR DEEPER DEPTHS

POWER BOOSTER®

PUMP DEEPER PUMP FASTER

WITH THE MOST VERSATILE TOOL IN THE INDUSTRY, THE POWER BOOSTER®

Available In: 2" - 6"

Custom Sizes Available

PATENTED

Available Internationally : **MASPORT** VACUUM PUMP SYSTEMS

Authorized Masport Dealer : **MASPORT**

Authorized Stocking Dealer : **COXREELS**

PressureLift.com : 972-355-0550 866-504-6596

National Truck Center

EST. 1981

305-691-8407

www.NationalTruckCenter.com

3001 EAST 11th AVENUE | HIALEAH, FL 33013

UNDER CDL



2012 Freightliner M2

Cummins ISB (285 HP), Allison Automatic, 180K Miles, New 1800 Gal. Tank, New Juroop PN-58 Razor-Pak Vacuum Pump (230 CFM)
\$60,000

5 IN STOCK



2014 Freightliner M2

Cummins ISB (285 HP), Allison Auto, 96K- 210K Miles, New 2500 Gal. Tank, New Juroop PN-84 Razor-Pak Vacuum Pump (317 CFM)
Starting at \$67,000



2013 International 4300

DT-466 (245 HP), Allison Automatic, 121K Miles, New 2000 Gal. Tank, New Juroop PN-58 Vacuum Pump (230 CFM)
\$60,000



2014 Freightliner M2

Cummins ISB (285 HP), Allison Automatic, 209K Miles, New 2500 Gal. Hoist Tank, New Juroop PN-84 Razor-Pak Pump (317 CFM)
\$74,000



2011 Freightliner M2

Cummins ISC (350 HP), Allison Automatic, 129K Miles, New 4000 Gal. Tank, New Juroop LC-420 Razor-Pak (425 CFM)
\$90,000



2013 Hino 338

JO8E (260 HP) Automatic, 164K Miles, New 2500 Gal. Tank, New Juroop PN-84 Razor-Pak Vacuum Pump (317 CFM)
\$64,000



2015 Freightliner M2

Cummins ISL (380 HP), 10 Speed, 218K Miles, New 4000 Gal. Dump Tank, New Juroop LC-420 Razor-Pak Vacuum Pump (425 CFM)
\$87,000



2014 International Prostar

Cummins ISX (485 HP), 10 Speed, 246K Miles, New 5000 Gal. Tank, New Juroop LC-420 Razor-Pak (425 CFM)
\$108,000

1-YEAR, 100,000 MILE ENGINE WARRANTY NATIONWIDE - 5-YEAR WARRANTY ON TANK | TRANSPORTATION AVAILABLE NATIONWIDE



Sold exclusively at
National Truck Center



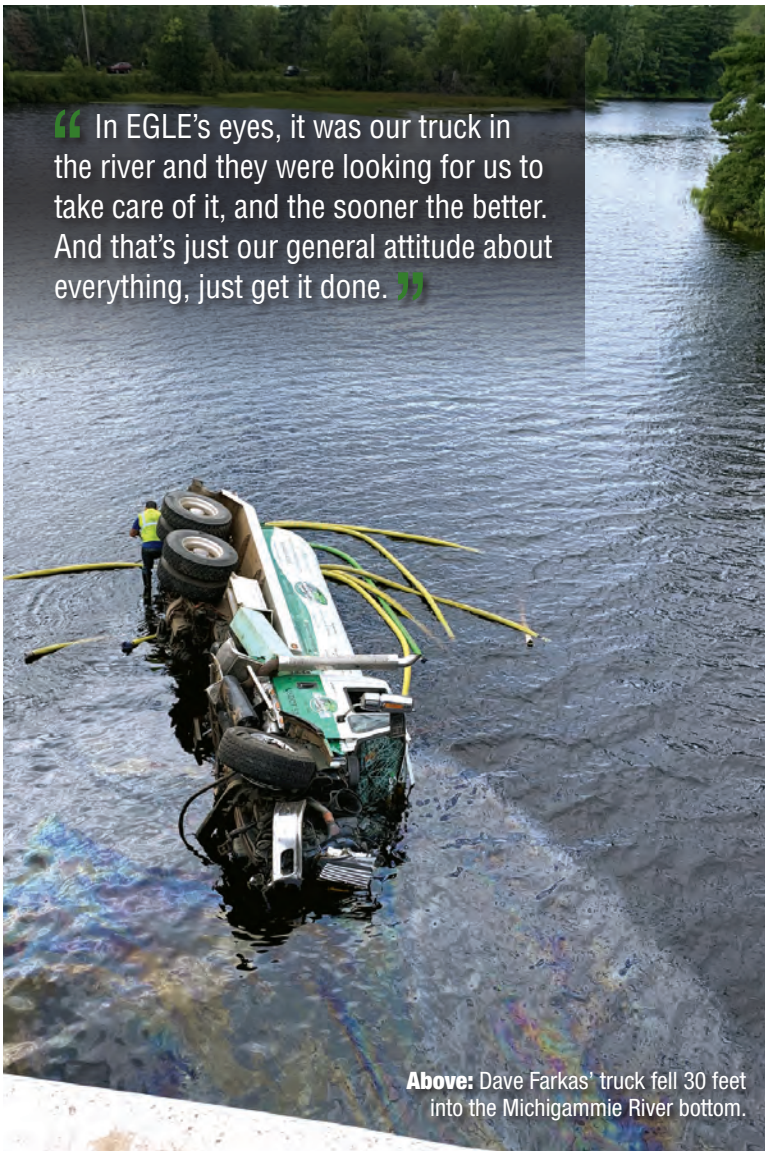


Contact Jim with your comments, questions and opinions at editor@pumper.com.

When Disaster Struck, This Michigan Pumping Crew Jumped Into Action

Pulling up and seeing the service truck mangled and resting on the river bottom was a pumper's worst nightmare | By Jim Kneiszel, Editor

“In EGLE’s eyes, it was our truck in the river and they were looking for us to take care of it, and the sooner the better. And that’s just our general attitude about everything, just get it done.”



Above: Dave Farkas' truck fell 30 feet into the Michigammie River bottom.

Ryan Carey was on the way to another appointment when his cellphone rang. It was one of his drivers, who sounded frantic. The driver had just passed over a bridge in Michigan’s Upper Peninsula and was shocked by what he observed.

“There’s a septic truck in the river and I think it’s one of our trucks,” the driver reported. Carey, heading the other direction about 20 minutes away, turned the truck around and pinned the accelerator to get to the bridge over the Michigammie River as quickly as possible.

“You can imagine all the things that were going through my mind,” Carey says as he recalled the events of that late summer afternoon. As the president of Sodergren Septic Service/J.Carey Inc., in Negaunee, Michigan, rolled up to the scene, “the state police were there, the ambulance was there, but I didn’t see the truck at first.”

Longtime driver Dave Farkas’ rig was laying driver’s side down in the middle of the river, a 30-foot drop and about 100 feet out from the twisted, broken guardrail. The front end of the 2002 International was a mangled mess and the suction hoses were being carried away by the current. A petroleum sheen was radiating away from the truck.

“Where’s Dave?” Carey remembers asking a state trooper on the scene. He was in the ambulance getting checked over. “Thank God he was OK.” Farkas would go on to the local hospital to get checked out, but he suffered no serious injuries, and while Carey was thankful and relieved his driver was OK, his work at the site was just beginning.

Carey learned a lot about the need for emergency preparedness that day. The incident also encouraged him to refocus his priorities to help his crew take their time on the job and not pressure themselves to do too much during the workday. And it reminded him of the importance of ongoing driver safety training.

“It could happen in the blink of any eye; I just want to be ready for that,” says Carey, whose company is coincidentally profiled in this issue of Pumper.

SO WHAT HAPPENED?

When you hear the circumstances of this crash, it’s amazing that Farkas and everyone else involved walked away unscathed.

Farkas was between pumping runs, driving his International carrying about 1,000 gallons of septage in the 3,200-gallon tank traveling



Above: Responders look at the Sodergren Septic truck from the Old M-95 bridge where it went through the guardrail.



Right: The septic truck is pulled from the river by a tow company.

northbound over the Old M-95-Michigammie River Bridge at Republic, a small town west of Marquette, Michigan. From the south, Carey recounts, Farkas' truck was approached by a truck towing a pontoon boat over the bridge. Suddenly, two older women in a small sedan pulled out from behind the truck and boat to pass.

Farkas had no time to react, and swerved the truck toward the side of the bridge deck to avoid the car. The car turned back into its lane, struck the boat and then spun around and hit the septic truck. Carey suspects the pumper's steer tire was blown by the collision, after which the truck crossed the bridge, knocked out a concrete abutment and guardrail, and was hurtled into the river.

"If he wouldn't have swerved; he basically saved their lives," Carey says of the women in the sedan that would have been no match for the loaded truck. "The unbelievable thing about it is that nobody was hurt."

According to Carey, Farkas apparently passed out momentarily, and when he came to, he was under water. "The worst part was getting out of the

truck, getting his seatbelt off, climbing through the passenger window and on top of the truck," Carey says. A boater on the river heard the crash, sped to the scene and took Farkas to the shore for treatment.

A QUICK CLEANUP

Assured that his driver was OK, Carey turned his attention to the truck in the water. A tow truck and a representative of EGLE (The Michigan Department of Environment, Great Lakes, formerly the state Department of Environmental Quality) were on hand and waiting for Carey to make some decisions about the damaged rig in the water. Carey talked it over and sprang into action.

"The biggest thing was making sure the truck got out of the water along with any debris. I basically went swimming and drug the debris out of the river," Carey says. The water was 5-feet deep at the deepest point around the truck, and Carey snared the hoses, the truck's hood, a toolbox, some septic supplies carried onboard and random bits of metal and fiberglass.

Though the truck was a total loss, the steel waste tank was undamaged and none of the septage was spilled. The only hazardous material was a few jugs of engine oil kept in a toolbox, which leaked and caused the sheen in the water. Oil socks were borrowed to clean up the spill and the tow truck moved the damaged rig and pulled out the concrete chunk. The accident happened shortly after 2 p.m., Carey arrived close to 3 p.m. and the cleanup was finished by 10 p.m.

"He was happy we got everything taken care of that evening," Carey says of the environmental official. If the crash wasn't the septic company's fault, why did Carey have to take care of the cleanup?

"Michigan is a no-fault state, so all parties involved and their insurance companies would end up footing the bill," he says. "In EGLE's eyes, it was our truck in the river and they were looking for us to take care of it, and the sooner the better. And that's just our general attitude about everything, just get it done."

Left: The truck itself was a total loss, but the wastewater tank was undamaged and will be reused.





Above: This is the new Sodergren Septic truck from Imperial Industries and carrying a National Vacuum Equipment blower.

BACK ON THE ROAD

Regular septic route driver Farkas took about a week off to recover from the crash, and when he returned, Carey surprisingly already had a bigger and better new truck waiting for him. The day after the crash, a Friday, Carey called his representative at Imperial Industries to find out what they had in stock and ready to go. He ordered a 2021 International HV Series truck carrying a 4,000-gallon aluminum tank and National Vacuum Equipment 4310 blower. The truck arrived the following Wednesday and a local graphics company got it lettered right away.

“He absolutely loves the truck,” Carey says of Farkas. Especially the automatic transmission, the first truck Carey has ordered that doesn’t require jamming gears. “The auto transmission is unbelievable. I can’t imagine not having an automatic transmission in that application ever again. It’s just unreal getting into some of the residential areas we go into.”

Carey also appreciates the automatic after learning through experience that CDL drivers today don’t necessarily know how to handle a manual. He says the automatic makes the driver’s day go smoother, saving them time shifting a couple thousand times. That’s time they can spend on customer education, much more important in Carey’s eyes.

What about the old truck? Carey expects to buy it back from the insurance company and put the older Imperial tank onto a new truck body and get it back on the road to serve the growing company.

LESSONS LEARNED

The crash revealed a few areas of concern for Carey. The first is that his company doesn’t have an emergency response plan in place. He was fortunate to be on the scene and able to immediately fulfill all the demands of the environmental department. What if he was gone on vacation or unable to respond, Carey wondered?

“We have enough trucks on the road on any given day. I want to get certified in environmental cleanup or at least have a protocol emergency management plan in place so that if this happens, everyone knows what we have to do,” Carey says. He would like to get his team trained to do

remediation rather than hiring out for those expensive services. He felt especially lucky this time because the waste tank wasn’t compromised, which could have led to bigger problems.

He plans on working with EGLE and his insurance carrier to develop emergency response training and will also bring this up with the Michigan Septic Tank Association. Carey is an active member in the group and believes other pumpers in the state could benefit from this unfortunate experience.

Another area of concern is distracted driving in a day when drivers carry cellphones and assignments come into the truck through a GPS app. While Farkas was not distracted and his quick actions may have saved lives in this case, Carey realizes distracted driving could be a big problem for small businesses that have service trucks on the road. It’s an ongoing topic of discussion, but Carey sees the value of formal driver training.

TAKE IT EASIER

Lastly, Carey wants to stress that his crew should take their time and not worry so much about squeezing in that extra tank at the end of the day. Their safety is too important to rush the job.

“It’s so easy to get wrapped up in what we do. If you’re getting behind in appointments, as a rule don’t be rushed all the time and enjoy it. Take your time. As far as customer service goes, in a perfect world it would be nice to take more time with the customers. Slow down a little bit. You don’t have to do 20 things a day. Do a good job and be thorough.”

I know it’s hard to slow down when the days are long, the jobs are piling up and then the inevitable emergency call comes in. But Carey learned that some things are more important than trying to do everything. And that your life can change on a dime when you least expect it.

At the end of that stressful day, Carey reflected on the events via his company’s Facebook page.

“Accidents like this remind you how lucky we all are to live where we do with the friends and family we have,” he wrote. “I’ve never been so happy to see Dave sitting up in that ambulance with only a few scratches.” **P**

END YEAR SALE

Buy

FROM THE INDUSTRY LEADER

OFFERING A WIDE RANGE OF SEPTIC AND PORTABLE PUMPING EQUIPMENT

**Don't know the perfect gift to give the pumper in your life?
How about a new Imperial Truck!**

At Imperial Industries, we have been going the extra mile designing and manufacturing specialized commercial sanitation tanks for more than 38 years - constantly evolving to meet the changing needs of your industry. It is our mission to provide you with dependability for the road ahead.



2020 INTERNATIONAL

2500-Gallon Aluminum Tank
NVE607 Vacuum Pump-380 CFM
Eaton Fuller 6-Speed

101406 \$111,505



2020 PETERBILT

3600-Gallon Steel Tank
NVE887 Challenger Max Pak Pump
Allison Automatic
3000RDS Transmission

100756 \$146,164


+FET

END OF YEAR CLOSEOUT

Get your hands on these trucks before they're gone! Give us a call to learn about our end of the year sales!

Subscribe to our
YouTube Channel 

www.Imperialind.com
salesinfo@imperialind

 1-800-558-2945



2021 MACK

4200-Gallon Aluminum Tank
NVE Challenger 4310 Blower- 940 CFM
Mack mDrive 12-Speed
Automatic Transmission

101444 \$185,000

+FET

@Pumper.com

Visit the site daily for new, exclusive content. Read our blogs, find resources and get the most out of *Pumper* magazine.



MAINTENANCE TIPS

extending undercarriage life

Undercarriages are one of the more costly parts of an excavator to repair and replace. Contractors can save a lot of money and downtime by ensuring the components of an undercarriage are treated in ways that maximize their lifespans.

pumper.com/featured



FOCUS ON SAFETY

transporting and operating equipment

Many of the issues related to safety around equipment are not unique to those of us in the septic system industry, but they are still critical to maintaining a successful and safe business. Heavy trucks and trailers used to transport equipment and materials must be in compliance with all applicable regulations.

pumper.com/featured

“ A lot of managers have no idea what motivates their employees. It’s horrible. If you don’t know what motivates them, how can you try to retain them? ”

—*How to Halt the Turnover of Your Top Talent*
pumper.com/featured



MARKETING A SEPTIC BUSINESS

a personal touch

Handwritten cards and freebie baseball caps are part of a thoughtful marketing plan for Ohio’s Mastin Site Services. Owners Erin and Cody Mastin make sure customers know the company is grateful for their business. But in this era when everything is done in cyberspace, they elected to send that message in a more personal and thoughtful way.

pumper.com/featured

A COMMON QUESTION

should grass be green over the septic field?

This online article addresses a common and timeless question. A reader from an arid region asks whether dead surface vegetation over drain lines is cause for concern. If you don’t see green vegetation above the drainfield, could that indicate a blockage?

pumper.com/featured



CONNECT WITH US

emails and alerts

Visit Pumper.com and sign up for newsletters and alerts. Get exclusive content delivered right to your inbox, and stay in the loop on topics important to you!

want more?

Find us on Facebook at facebook.com/PumperMag or Twitter at twitter.com/PumperMag



Satellite

Happy Holidays



Accu-Tab® Wastewater Tablets

- U.S. made, recognized global brand with no imported ingredients
- Chlorine tablet with beveled edges to minimize wicking
- Consistent chlorine strength for reliable dosing control
- No measuring, mixing, or spilling of chemicals common with granular and liquid chlorine
- Stearate free formula with balanced pH

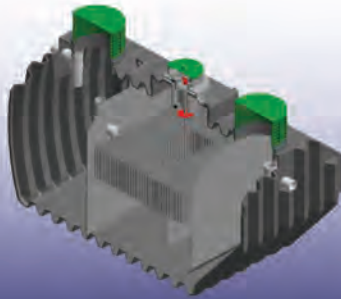
Illumi-Jet UV Disinfection Unit®

- UL listed as a NEMA 6p enclosure (watertight submergence test)
- Install directly in ground or in pump tank on 4" effluent line
- Complete disinfection without the use of chemicals
- Hermetically sealed electrical components
- High capacity disinfection reservoir
- Kapton® seals improve serviceability



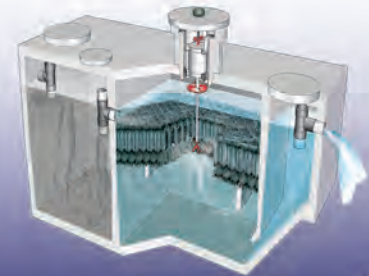
Wastewater Treatment Solutions

Founded on Innovation. Anchored by Service.®



Residential & Commercial Treatment Plants

- Concrete and rugged polyethylene material
- 500-1500 GPD Residential Systems
- 1500-300,000 GPD Commercial Systems
- Up to 800 GPD in plastic design
- A single moving part
- Innovative design for easy system servicing
- No filters to clog
- Lifetime exchange program



www.jetincorp.com • 800.321.6960 • email@jetincorp.com



THE MOST LAYOUTS AVAILABLE FOR HANDICAP ACCESSIBLE TRAILERS



Proudly Made Since 2003

Comforts of Home
Services, Inc.
BATHROOM • SHOWER • SPECIALTY TRAILERS



GS-07F-0236V

See our website for floor plans and options.

info@cohsi.com • 630.906.8002 • www.cohsi.com

ISUZU PORTABLE TOILET SERVICE TRUCKS
Now Available in Diesel & GAS!

WorkMate 950 or 1050 Models
19,500 GVW



WORK MATE
SANITATION INNOVATIONS

1-800-927-8750

Ask for JOHN BARRETT
or visit www.fmitrucks.com

One Tough Pump.

ELIM A344 Series.

Designed specifically for the portable sanitation industry.



Compact Size
Low Weight
Air-cooled
218 CFM

Includes:
Automatic Oil Pump
Integral Oil Reservoir
Optional Air Injection
Integrated Oil Catch
Muffler & Secondary
Vacuum Relief Valve
Pressure Relief Valve
Vacuum / Pressure Gauge



Our proven ELIM A344 Series, features the newest member to our line-up. This compact, low-weight pump has all the durability & design features you've come to expect from a Fruitland pump. Offering 218 cfm of air flow and "low" oil consumption, it boasts an automated oil delivery system through the rotor shaft, level sight gauges, vane gauging ports, and an anti-shock design. This pump also comes with a lifetime warranty against manufacturer defects on skeletal pump components, and an industry-best two year parts & labor warranty on all pump components. The ELIM A344 Series package features an oil catch muffler and secondary shut off, which eliminates plumbing issues and makes for easy installation. This package comes in both gear-box and hydraulic drive options with integrated mounts.



24 Leaside Avenue Stoney Creek, ON Canada L8E 2N7
T: 905-662-6552 | TF: 1-800-663-9003 | F: 905-662-5412

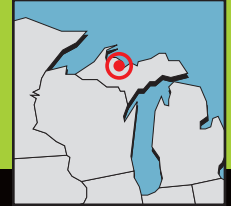
www.fruitlandmanufacturing.com



Left: Ryan Carey is shown with his wife, Kylie, and their children, Carver, 8; Finley, 7; Sawyer, 5; Scout, 4; Huck, 2; and Wren, nine months. (Photos by Natalie Larson)

Sodergren Septic Service/ J. Carey Inc.

Negaunee, Michigan



OWNER: Ryan Carey

FOUNDED: Sodergren Septic Service, 1968; J. Carey Inc., 1980

EMPLOYEES: 32

SERVICE AREA: Within 80 to 100 miles of Negaunee, Michigan.

SERVICES: Sodergren provides septic pumping, inspection, installation and repair; portable sanitation; J. Carey provides logging, excavation and trucking

AFFILIATIONS: Michigan Septic Tank Association, National Association of Wastewater Technicians

WEBSITE: www.sodergrenseptic.com; www.call-carey.com

PUMPING UP HIS BUSINESS

Michigan's Ryan Carey brings smart diversification by adding septic service to his busy forest products and excavating company

By Peter Kenter

J Carey Inc. has offered logging, excavating and trucking and hauling services to Michigan's Upper Peninsula and parts of Wisconsin from its offices in Channing, Michigan, since 1980. Septic tank installation and repair has always been a small but important segment of the business. To diversify, owner and President Ryan Carey expanded the company service roster still further in 2018 when he bought out Sodergren Septic Service.

It takes a special kind of management skill to juggle all the services the company offers, but Carey sees pumping as a welcome addition to the business, an oasis of stability and a hedge against the more volatile resource sector.

Carey was born into the business. Now 35, his early memories involve watching excavators in action, sitting in the passenger seat of a snowplow and going on parts runs with his dad.

"I loved the equipment from an early age," he says. "I started driving a dump truck for my father at age 14. "After a few years in college I realized that I loved working more and went back to work for my dad in 2006."

Carey's father, Jim, had always wanted his son to take over the business. The younger Carey officially became owner and president in 2015, in large part to relieve his father who was attending to family duties. Now 65, the older Carey was caring for both his mother, who had Alzheimer's disease and died in 2017, and his sister Lindsay, who has Down syndrome. He is semiretired, but still works for the business on a reduced schedule.

(continued)



ROBINSON VACUUM TANKS

Dedicated to keeping inventory on the ground to provide fast turnkey solutions!

Call (814) 933-0927, visit www.RobinsonTanks.com, or email sales@robinsontanks.com



- 2020 International HV607
- Allison Automatic Transmission
- 3600 Gallon aluminum vacuum tank
- NVE 4307 Blower

• **\$145,900 + FET**



- 2020 Ford F550 4x4 Diesel
- 1500 Gallon aluminum portable restroom tank
- 1100 waste x 400 fresh
- NVE 304 and Masport HXL4V vacuum pump options
- Flojet washdown pump + hose reel

• **\$85,200**



- 2019 RAM 5500 4x2 Gas
- 980 Gallon carbon steel portable restroom tank
- 680 waste x 300 fresh
- NVE 304 vacuum pump
- Flojet washdown pump + hose reel

• **\$75,100**



- Multiple slide-in tanks in stock
- Stocked tank only so you can pick the vacuum pump of your choice
- Stock tanks range from 300 gallons to 950 gallons
- 40+ Additional standard models to choose from

• **Call For Pricing**

VISIT OUR WEBSITE TO SEE ALL AVAILABLE INVENTORY



Left: Working an excavation job site are, from left, Dave Farkas, Devin Lafond, Ryan Carey, Josh Nelson and Erik Reynolds.

Below: Devin Lafond is at the controls of a John Deere tracked skid-steer during a septic system installation.



“ I DIDN'T THINK I'D LIKE PUMPING AS MUCH AS I DO. I'M A NATURALLY OUTGOING PERSON AND IN SEPTIC, I ENJOY PROVIDING A QUALITY SERVICE DIRECTLY TO CUSTOMERS ON A ONE-TO-ONE BASIS. ”

RYAN CAREY

Excavating and hauling sand, gravel and equipment are profitable endeavors for the company, as is the thriving septic system installation and repair business. However, the logging business is more cyclical. When local pulp and paper mills began to increase demand for chipped wood products, that activity became the company's focus around 2007.

“Succeeding in the forestry business requires expensive equipment, and highly skilled workers to run it,” Carey says. “But sometimes it can be a struggle just to break even. About five years ago as the forestry products market was shifting, we began to look for other sources of revenue and I began to consider septic service, an industry that's always needed, regardless of how the economy is performing.”

The company's accountant happened to work for Sodergren Septic Service, located in nearby Ishpeming. Carey learned that owner Tom Sodergren was considering retirement.

“Tom was the local septic guy pretty much since 1968 when he launched the business,” says Carey. “When someone said ‘septic’ you thought of Sodergren.”

The two agreed on terms for a sale in 2018, which included: the company name and phone number; a 2007 Peterbilt truck with a 2,500-gallon aluminum tank and MEC Battioni Pagani pump built out by Imperial Industries; various trailers and other equipment; and a local client list.

But Carey saw additional possibilities for the company's marginal activities, including pumping of food waste, grease traps and lift stations for local wastewater systems. He quickly moved the business to the company's excavation division office in Negaunee, about 40 miles northeast of Channing.

“In August 2018 I was driving a septic truck,” says Carey.

It's no surprise for the CEO to take a hands-on role in the business. The company's divisions operate independently for the most part, so Carey is a working president, operating an excavator or driving a grader on different days. He says he chose to work primarily in the new septic pumping division because it gives him the greatest opportunity to interact with customers.

“I've always liked excavating, but I didn't think I'd like pumping as much as I do,” he says. “I'm a naturally outgoing person and in septic, I enjoy providing a quality service directly to customers on a one-to-one basis. I also enjoy educating them about their septic systems — they're always a receptive audience.”

J. Carey currently employs 30 people. Carey sees his employees as a big family, some of whom have worked for the company since before he was born. The most senior employee is Joe Dumoulin, a forestry crew leader, who has been with the company since 1982.

Carey transitioned one employee, Dave Farkas, from the excavation business into septic pumping. “Dave also loves it,” he says. “He does an awesome job and happens to be passionate about septic service.”

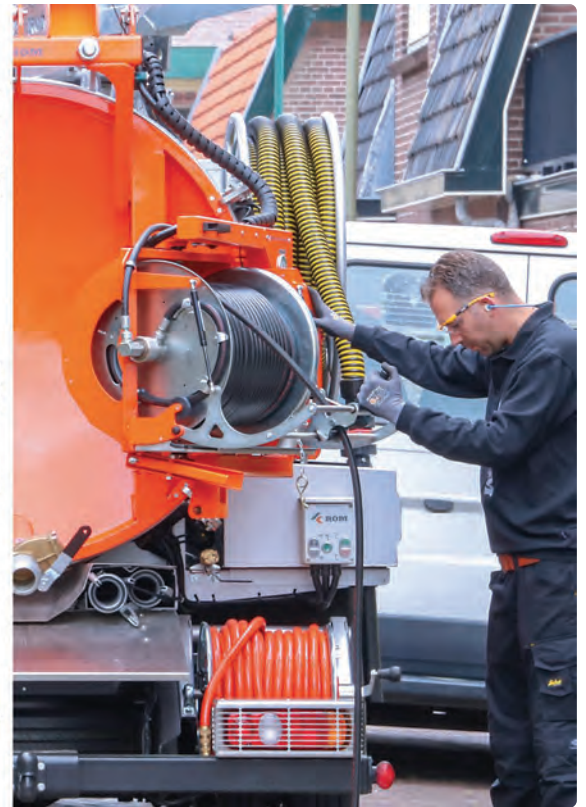
Two other Carey employees are being trained to work in septic pumping as well.

Carey drives a 2002 International with a 3,400-gallon steel tank and Fruitland pump built out by Imperial. He sold the 2007 Peterbilt and bought another 2002 International with a 3,200-gallon steel tank and National Vac-

(continued)



SmartCombi models have jet/vac capability for grease traps, septic tanks and more.



Compact and affordable truck-mounted jetters and jet/vac units

Ideal for light- to medium-duty commercial vehicles and work in tight spaces.

New from MyTana, six models offer jetting capabilities for cleaning lines from 12" to 24". Combined jet/vac machines can be trailer- or truck-mounted, and offer a choice of 400 or 800 gallon tank. All models can be customized to suit your work needs and budget.

Built by ROM with tried-and-trusted high-pressure technology and years of vacuum experience, these units perform in the harshest environments around the world. Reliability and ease-of-use lead to faster turnaround on jobs, higher revenues and increased customer satisfaction.

Learn more and see the lineup at mytana.com/rom

While there, use the handy budgeting tool.



(866) 369-6353
www.mytana.com





Left: The team at Sodergren Septic includes, from left, Jim Carey, Nora Ackland, Ryan Carey, Dave Farkas and Devin Lafond.

“ You hire people to either reduce costs or generate revenue. You need to deploy your labor where it provides the greatest value to the business. ”

RYAN CAREY

uum Equipment pump, also built out by Imperial. That truck was destroyed in a recent crash and replaced by a 2021 International from Imperial with a 4,000-gallon aluminum tank and NVE 4310 blower.

The construction fleet for septic tank installation includes: a 2004 Kenworth T800 quad dump truck; a 2019 Mack Granite quad dump truck, a 2018 Towmaster T-50 tri-axle tag trailer, a 1993 Ford L8000 Vac-Con Hydro Vac truck, a 1996 Ford L9000 quad dump truck, a 2013 Chevrolet service van and a 2016 Ford F-250 pickup. The excavation team operates a 2018 John Deere 333G compact track loader and a 2016 Hyundai 80 excavator. It also includes: a 2014 PC160 excavator; a 2004 WB140 tractor loader backhoe, a 2006 CK35 compact track loader, a 2014 D39P dozer and a 2005 WA320 wheel loader, all from Komatsu.

The company bought a second septic company, Stiglich Septic Cleaning in L'Anse, Michigan, in early 2019 to expand its septic client list and territory reach.

Sodergren's service area covers six counties around Negaunee — Marquette, Dickinson, Iron, Baraga, Alger, Houghton, Ontonagon and Keweenaw. That includes the city of Marquette, the largest community in the Upper Peninsula. The service area covers a radius of about 80 miles during the busy season from about May 1 to Dec. 1. However, that radius increases to about 100 miles as winter approaches.

“A lot of our clients in outlying areas say they can't get their septic tanks pumped because their local provider has shut down for the winter,” Carey says. “We get regular calls for pumping and emergency calls because their
(continued)”

MORE INFO

Arctic Blaster, Inc.

403-638-3934
www.arcticblaster.com

Fruitland Manufacturing

800-663-9003
www.fruitlandmanufacturing.com
See ad, page 17

Imperial Industries, Inc.

800-558-2945
www.imperialind.com
See ads, page 13, 50

Komatsu America Corp

847-437-5800
www.komatsuamerica.com

National Vacuum Equipment, Inc.

800-253-5500
www.natvac.com
See ad, page 3

Satellite Industries

800-241-7951
www.satelliteindustries.com
See ad, page 15

Towmaster

800-462-4517
www.towmaster.com

TUF-TITE, Inc.

800-382-7009
www.tuf-tite.com
See ads, page 27, 72

Vac-Con, Inc.

904-284-4200
www.vac-con.com



Carey, left, and Dave Farkas dig out a lid during a residential pumping job



TRANSPORT TRUCK SALES, INC.



Happy Holidays

Ask for Scott – 888-395-7551 | After hours call Scott at 816-590-4076



Delivery Available Anywhere in the Lower 48!!

www.TransportTruck.com

NON CDL



2013 Kenworth T270, PX6 240 HP, Allison auto, NON CDL, **NEW** 1800 gallon steel vac tank, **NEW** Masport Viper vac pump.

Call For Pricing!

1-YEAR NATIONWIDE DRIVE TRAIN AND EMISSIONS WARRANTY



2012 Peterbilt 365, Cummins 425 HP, only 36K original miles, jake, 8LL spd, 13,200 front, **NEW** 3360 gallon steel vac tank, **NEW** Masport Hydra pump.

Call For Pricing!

1-YEAR NATIONWIDE DRIVE TRAIN AND EMISSIONS WARRANTY

NEW



NEW 2020 Kenworth T370, PX9 330 HP, jake, Allison auto, diff locker, **NEW** 2300 gallon steel vac tank, **NEW** Masport Viper vac pump.

Call For Pricing!



2007 Mack Granite, AMI-370 HP, jake, 10 spd, low miles, **NEW** 3300 gallon steel vac tank, full hoist, full open rear door, **NEW** Liquid cooled NVE 866 vac pump 520 CFM, 200 gallons of fresh water.

Call For Pricing!

1-YEAR NATIONWIDE DRIVE TRAIN WARRANTY

DOT CODE



2011 Mack Granite, DMP8 505 HP, jakes, 18 spd, 20# lb fronts, full lockers, 4200 gallon steel code 407 vac tank, Masport 400 vac pump.

\$69,500

1-YEAR NATIONWIDE DRIVE TRAIN AND EMISSIONS WARRANTY

IN PROGRESS



2013 Pete 337, Paccar 300 HP, Allison auto, 33# GVW, only 85K miles, **NEW** 2300 gallon steel vac tank, **NEW** Masport Viper pump.

Call For Pricing!

1-YEAR NATIONWIDE DRIVE TRAIN AND EMISSIONS WARRANTY

IN PROGRESS



2013 Kenworth T270, PX6 240 HP, Allison auto, NON CDL, **NEW** 1870 gallon steel vac tank, **NEW** Jurop PN 84 Vac pump.

Call For Pricing!

1-YEAR NATIONWIDE DRIVE TRAIN WARRANTY

IN PROGRESS



2012 Peterbilt 367, Cummins ISX 485 HP, jake, 8LL, only 43K miles! **NEW** 3360 gallon steel vac tank, **NEW** Masport Hydra vac pump.

Call for Pricing!

1-YEAR NATIONWIDE DRIVE TRAIN WARRANTY

IN PROGRESS



2012 Mack Granite, MP8 - 415 HP, jake, 10 spd, 20 fronts, 44 rears, **NEW** 3500 gallon steel vac tank, **NEW** Masport Hydra vac pump.

Call For Pricing!

1-YEAR NATIONWIDE DRIVE TRAIN WARRANTY



Left: Carey and Farkas link hoses to reach a tank on a residential call. The service truck is from Imperial Industries and carries a Fruitland pump.

systems are freezing up. Our Arctic Blaster steam-defrosting system gets a lot of use during those winter months.”

Sodergren is also a dealer for Matt’s Sewer Blankets, an insulating product staked to the ground to insulate septic systems during a typical Michigan deep freeze.

The company’s excavating division has been installing and repairing septic systems since 1980. In the areas Sodergren serves, county health departments perform perc tests and design each septic system for the property owner. Carey usually recommends that homeowners overbuild the capacity of the system to serve future and unexpected needs.

Almost all of the septic tanks the company installs are precast concrete, provided by two local Michigan suppliers: Rudy Goupille & Sons in Negaunee and Champion in Iron Mountain. Lids and risers are supplied by TUF-TITE.

“A lot of our repair work involves damaged steel tanks that have reached the end of their service life,” says Carey. “In most cases, the drainfield also needs to be replaced. We also install a lot of risers to help homeowners avoid excavation charges. Risers generally pay for themselves over the space of two pumpings.”

The company has just dipped its toe into portable restroom rentals under the Sodergren brand. It recently purchased four units from Satellite Industries. The rentals have been used for construction and small events, but this side of the business is already showing signs of expanding.

“We just booked a wedding and I will buy a hand-wash station and as many restroom units as we need to service it that weekend,” says Carey. “Going forward, we will buy restroom units on an as-needed basis to meet client demands.”

The company’s portable restroom operations will be consolidated in Negaunee.

Carey has six children — the oldest is eight. His wife, Kylie Jo Carey, manages the homefront while he keeps the business moving, although the kids often like to get into the truck and join their dad on calls.

“We have to keep track of whose turn it is,” he says. “It’s a good experience for everyone right now, and a good exposure to the industry for my kids. One day, I hope to see them take over for me. We’re here for the long haul and I believe they can take the business up another notch when it’s their turn.” **P**

IN-HOUSE MECHANICS ARE A PLUS

With dozens of vehicles under the umbrella of J. Carey Inc. and Sodergren Septic Service, it’s no wonder the company operates its own in-house garage, an 80-foot by 200-foot, four-bay shop staffed by three full-time mechanics. The garage was established to take the edge off maintenance costs in the company’s forestry division where equipment takes the greatest beating.

“We’ll do pretty much anything from regular maintenance and brakes to engine and hydraulic work,” says company owner and president Ryan Carey. “We’ll even fabricate new parts in the shop where we can.”

The shop is headed up by Dave Roell, known as “Dr. Dave,” who’s been with the company for more than 20 years. “He’s known for his

ability to fix almost anything on a budget,” says Carey.

Carey regularly reviews the optimal size of the garage for economic efficiency. Logging vehicles require the most maintenance and septic service vehicles the least. If the number of logging vehicles owned by the company continues to decline, he says he’ll consider contracting out heavy-duty repairs and redeploying one of the mechanics to another business division, such as installing septic systems.

“The size and the scope of the garage are under constant evaluation,” he says. “You hire people to either reduce costs or generate revenue. You need to deploy your labor where it provides the greatest value to the business.”



Technician Farkas returns hoses to the service truck after pumping a tank.



#BESTTRUCKSINTHEBUSINESS



WHAT A YEAR IT'S BEEN! GAPVAX WANTS YOU TO KNOW THAT WE CONTINUE TO WORK HARD AND WE APPRECIATE YOUR BUSINESS! WITH 2020, CAME A LOT OF CHANGES, WE HAVE NOT CHANGED. GAPVAX CUSTOMER SERVICE REMAINS A PRIORITY ALONG WITH MANUFACTURING THE BEST TRUCKS IN THE BUSINESS. HARD WORK AND AMERICAN PRIDE GO INTO EVERY SINGLE GAPVAX UNIT BUILT. OUR EQUIPMENT IS MANUFACTURED WITH QUALITY COMPONENTS AND DESIGNED AROUND THE OPERATOR BUILT TO LAST AND OUTPERFORM THE VERSATILITY AND CUSTOMIZATION IS SECOND TO NONE.

GIVE US A CALL TODAY TO SEE WHAT WE CAN DO FOR YOU.

JOHNSTOWN, PA
888-442-7829



DEER PARK, TX
281.884.8658

AIR MOVERS

HYDRO EXCAVATORS

COMBO JETVACS

RECYCLE JETVACS

JETTERS

SKID MOUNTED
VACUUM SYSTEMS

*Merry
Christmas*

FROM OUR TEAM TO YOURS,
WE WISH YOU ALL
A SAFE & HEALTHY HOLIDAY SEASON
AND HAPPY NEW YEAR!!



Happy Holidays

TSI
TANK SERVICES, INC.

CALL TODAY FOR SAVINGS

Professionals in the Vacuum Tank & Trailer Industry
866-720-4999 www.tankservicesinc.com

Jerry Blake
Cranston, RI
jerry@tankservicesinc.com
Cell: 401-688-0043

Amanda Hensarling
Baytown, TX
amanda@tankservicesinc.com
Cell: 401-339-9992



2021 Kenworth T880
CALL

20/20/46, Ultra-Shift, NVE 4310, CAT660 jetter package, LED lights, LED strobes, 4-camera package, NAV system, alum. tank



2020 Kenworth T880
IN STOCK

5000 gal. aluminum vacuum tank, NVE 4310 package.



2020 Chevy 5500
CALL FOR PRICING

4 x 4, diesel 1500 RVT, NVE 304 engine package.



2020 Chevy 5500
CALL FOR PRICING

4 x 4, 700 RVT, 12 unit stake body, NVE 304 engine package.



2020 T880 KW
Ultra-Shift

485HP, 20/20/46 ready for a tank (4) in stock



7000 - 9000 Gal. Aluminum Tri-Axle Trailers

Air ride suspension (tri-axle), pump platform, bright finish, LED lights, Betts valves.



Fleet Packages
CALL FOR PRICING

Lets us Build out your Fleet with Kenworth, Peterbilt, Mack, Freightliner using various pump-blower options, alum-steel-stainless tanks



Self Contained Unit
CALL

600 gal. steel tank, 33.5 HP Kubota diesel engine: (choice of pumps), 200 gal. poly tank, 6 gpm 3,000 psi jetter.



Slide-In Units
IN STOCK

Select pump package & engine HP. Light weight aluminum, Available options.



Restroom Tanks
IN STOCK

Stainless steel and aluminum available in various sizes and compartments.



5,000 Gal. Aluminum tanks
IN STOCK

Ready to mount our chassis or yours.

NVE
NEW ENGLAND DISTRIBUTOR

Pumps For Sale
NVE 866 and 4307 Packages Available



SHINE ON Products From
GTI
CHEM-TECH INDUSTRIES



Need Equipment? Contact Us We Can Get It.

Are Your Septic Systems Naughty or Nice?



Nice!

eljen
CORPORATION

Innovative Onsite Products and Solutions Since 1970

www.eljen.com

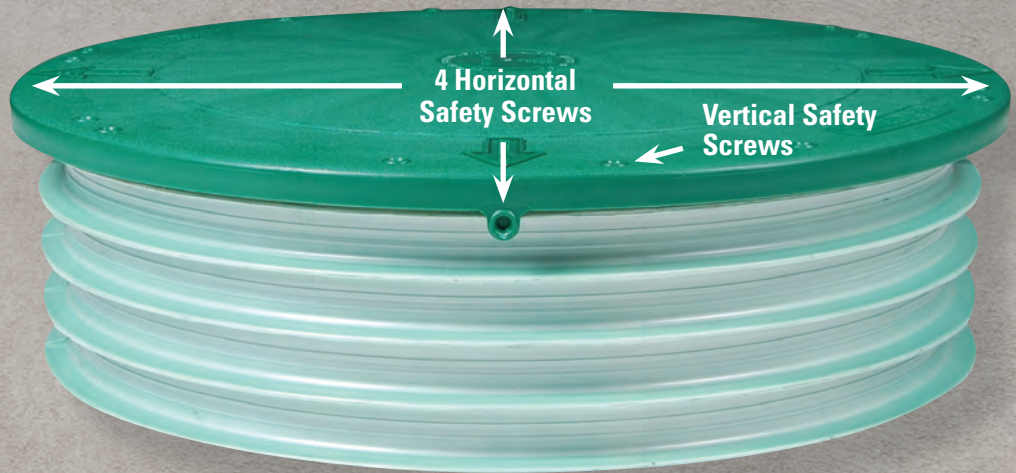
24" HEAVY DUTY MULTI-PURPOSE FLAT RISER LID

**FREE FREIGHT
 on Full Cartons!**

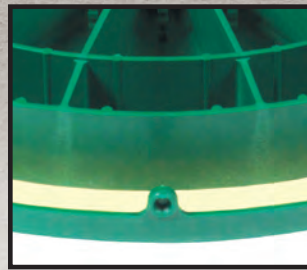
**Fits most commercially
 available:**

- Risers
- IPEX PVC Ribbed Pipe
- Corrugated Pipe

**LID MAY BE USED WITH OR
 WITHOUT CONCRETE CENTER**



Secured by 6 Vertical and 4 Horizontal Safety Screws. Screws Included.



Foamed-in Permanent Polyurethane Gasket.



Holds up to 70 lbs of Concrete for Added Safety.



Water-TITE™ Joint Vertical and Horizontal Safety Screws

4" Effluent Filter and 4" T-Baffle™

86 ft. of 1/16" filtration area.

Increases time between filter cleaning.



EF-4 Combo Includes Filter, Housing and

4" Sch. 40 & SDR-35

NSF®
 800 GPD
 ANS/NSF
 Standard 46

NSF®
 COMPONENT
 ANS/NSF
 Standard 46

EF-4 Combo 18

NSF®
 COMPONENT
 ANS/NSF
 Standard 46

TB-4-18 Housing
 12/carton

SD-4
 Gas/Solids Deflector

4" Effluent Filter EF-4

One-piece effluent filter fits in 4" Sanitary Tee.

- Injection molded PolyPro
- Simple to install - Easy to clean

4" Sanitary Inlet/Outlet T-Baffle™

Injection molded T-Baffle™.

- Injection molded T-Baffle
- Fits 4" Sch. 40 and SDR-35 pipe
- Simple to install
- May also be used as Inlet & Outlet Tee

6" Effluent Filter and 6" T-Baffle™

244 ft. of 1/16" filtration area.

Increases time between filter cleaning.



EF-6 Combo Includes Filter, Housing and Bushing

4" Sch. 40 & SDR-35

NSF®
 1500 GPD
 ANS/NSF
 Standard 46

NSF®
 COMPONENT
 ANS/NSF
 Standard 46

TB-6 Housing

Gas/Solids Deflector

6" Effluent Filter EF-6

One-piece effluent filter fits in 6" T-Baffle™.

- Injection molded PolyPro
- Simple to install
- Easy to clean

6" Sanitary T-Baffle™

Injection molded T-Baffle™.

- Injection molded
- Fits 4" Sch. 40 and SDR-35 pipe
- Simple to install
- May also be used as Outlet Tee with Solids Deflector

Pumper Proud!

The 2020 Classy Truck winners help septic service contractors amaze their customers and maintain professional standards in the field

By Jim Kneiszel

The past 12 months, the pandemic of 2020 has produced a series of small-business ups and downs. March brought a gut-punch to pumpers everywhere as they dealt with the news of COVID-19. Then later in the year our contractors became busier than ever as folks sheltered in place and needed tanks pumped and systems maintained. It was unlike anything we've experienced before.

But one thing remained constant through thick and thin, and that was the Classy Truck. The economy the past few years has been fantastic for pumpers, and they've invested some of their growing revenue in new trucks and in refurbishing their most trusty rigs. So oddly, even in the midst of this health crisis, contractors were still upgrading their fleets and in a mood to show off their service vehicles.

And we saw that pumper optimism shine through in the photos offered for our monthly Classy Truck feature. Each of these trucks has been featured in an issue of the magazine and now they compete for our Classy Truck of the Year honor and an opportunity to grace the cover of an upcoming issue of the magazine.

We need your help in choosing the top truck of 2020. Look over the 12 Classy Trucks and choose your favorite. Reader votes will be tallied and added to the picks from our team of COLE Publishing judges to choose the winner. But make your pick quickly. Voting ends Dec. 23.

Good luck to all of our Classy Trucks. Like they say during any beauty pageant, you're all winners. You have done the industry proud with your great graphics, commendable chassis, and eye-popping paint and chrome work. Hardworking pumpers deserve to ride in style and promote professionalism and reassure customers that they made the right choice to call you when they see these trucks pull up. **P**

MARCH



Mort's Water Co.
Latimer, Iowa

Ken Morton added a white 2019 Freightliner M2 with a 3,640-gallon stainless steel tank and National Vacuum Equipment 4310 blower from Advance Pump & Equipment. The truck is powered by a Cummins L9 350 hp engine with power reaching the wheels through an Eaton Fuller 8LL transmission.

APRIL



Jerry's Sewer Cleaning Services Inc.
Big Rock, Illinois

Jerald Munson purchased a 2017 Galaxy Blue with metallic pearl Peterbilt 348 tandem axle truck with a 3,600-gallon polished aluminum tank and National Vacuum Equipment 607 Challenger liquid-cooled pump built out by Imperial Industries. The truck is powered by a PACCAR PX-9 250 hp engine tied to an Allison automatic transmission. The truck was built in memory of James R. Munson.

JANUARY



C.L. Boswell Jr. Septic
Mechanicville, Maryland

Clarence Boswell Jr. added a pearl white over pearl purple 2005 Peterbilt 335 with a 2,500-gallon steel tank and Juroop R260 pump built out by Stephenson Specialty Trucks. The truck is powered by a Cummins 230 hp engine connected to an Allison automatic transmission.

FEBRUARY



Norway Septic Inc.
Elkhart, Indiana

Owners Matthew James and JoDee Ann Moseng added a 2008 Freightliner M2 and Matthew and his brother, Mitchell, built out the truck and painted it using a 3,750-gallon steel Vaxteel tank and Juroop 580 pump provided by LMT Inc. The rig is powered by a Cummins 330 hp engine tied to an Allison 6-speed automatic transmission.

MAY



Ray's Septic Tank Cleaning
Monroe, Michigan

Gerry Noble added a blue 2017 International 4400 Series truck with a 2,800-gallon aluminum tank and National Vacuum Equipment 607 Challenger pump built out by Advance Pump & Equipment. The truck is powered by an International N9 275 hp engine running through an Allison 6-speed automatic transmission.

JUNE



Countryside Septic Service Cadott, Wisconsin

Tom Jakubowicz bought a 2019 winter white International HX with a 5,000-gallon stainless steel tank and National Vacuum Equipment 4310 blower from Imperial Industries. The truck is powered by a Cummins X15 500 hp engine tied to an Allison 4500 automatic transmission.

JULY



Torti Services Inc. Chepachet, Rhode Island

Larry Torti added a Dupont white and gunmetal gray 2018 Kenworth T800 carrying a 4,600-gallon steel Imperial Industries tank, Advance Pump & Equipment toolbox jetter and Fruitland 500 pump. Torti built out the truck himself and painted the tank. It is powered by a pre-emission remanufactured Series 60 Detroit Diesel 500 hp engine tied to an Eaton LL 8-speed transmission.

AUGUST



Tiger Grease and Septic Woodland Park, New Jersey

Gary Lucchesi and Anthony Laguera added an orange and black Freightliner M2 with a 2,300-gallon waste/200-gallon freshwater steel tank, Jurob PN84 pump and JT530 Advance Pump & Equipment toolbox jetter from National Truck Center. The rig is powered by a Cummins 260 hp engine tied to an Allison automatic transmission.

SEPTEMBER



Manoney Environmental Joliet, Illinois

Mahoney Environmental added a custom silver metallic 2019 Freightliner SD114 with a 2,800-gallon waste/1,400-gallon freshwater aluminum tank and National Vacuum Equipment 4307 blower from Advance Pump & Equipment. The truck has a Detroit Diesel DD12 EPA 2017-compliant engine and Eaton 10-speed transmission.

OCTOBER



Brenner's Sanitary Services Apple Creek, Ohio

Bryan and Kim Mast added a black and lime green 1996 Kenworth W900L with a 3,600-gallon steel tank and National Vacuum Equipment Challenger 866 heavy-duty Max Pak pump from Marengo Fabricated Steel. Formerly an over-the-road semi converted into a day cab, the truck has a 500 hp engine and 13-speed Eaton Fuller transmission.

NOVEMBER



Southwest Site Services Corona, California

Steve Morales added a black and fluorescent green 2020 Freightliner M2 with a 4,200-gallon aluminum tank and National Vacuum Equipment 887 MaxPak pump built out by KeeVac Industries. The truck is powered by a 350 hp Cummins engine tied to an Allison automatic transmission.

DECEMBER



Dale Miller & Son Inc. Fawn Grove, Pennsylvania

Dale Miller & Sons bought a white 2019 Freightliner M2 with a 4,000-gallon aluminum tank and National Vacuum Equipment 4310 blower built out by Imperial Industries. The truck is powered by a 350 hp Cummins L9 engine tied to an Allison automatic transmission.

CAST YOUR BALLOT TODAY!

Step 1. Look over the 12 Classy Trucks for 2020.

Step 2. Choose your favorite.

Step 3. Go online at www.pumper.com/classy and vote. (One vote per IP address allowed.)

ACT NOW!

The deadline for voting is Wednesday, Dec. 23.

MAKE YOUR NEW RIG A CLASSY TRUCK!

Seeing your truck in the pages of *Pumper* is easy!

Step 1. Clean and detail your truck.

Step 2. Take a variety of photos.

Step 3. Send the photos to us, along with a detailed description of the truck and accessories, to editor@pumper.com.

Innovation • Excellence • Durability
The QUALITY You Deserve

ALL Sansom models give you the *HANDS-FREE* advantage over the competition!



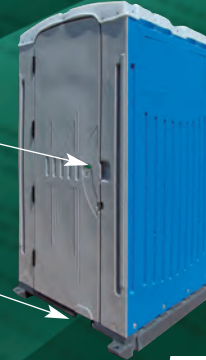
RAM

Superior 65-gallon Mid-range Model



**HYGIENIC AND
 CONVENIENT**

*HANDS-FREE entry and exit
 HANDS-FREE lock and unlock*



Zenith

Our 80-gallon Flagship Model



844-95ANSOM 844-972-6766
SAINT LOUIS, MISSOURI • SANSOMINDUSTRIES.COM

All Sansom Industries models protected by multiple U.S. Patents



ultra ultra ultra
LIGHT – VERSATILE – SAFE

ultraSHORE
 P R O D U C T S



Quick to Install.
 As light as 130lbs.



Roll Your Own.
 Optional wheel kit.



Stacks easily with
 2' & 4' high panels.

This is What Aluminum Shoring Was Meant to be!



1-800-683-8837

1-800-SHORING

CALL TOLL-FREE NATIONWIDE • 1-800-746-7464

www.shoring.com



Vacuum Sales Inc.

51 Stone Road, Lindenwold, NJ 08021

Order Discounted Pumps Online

24 hours a day 7 days a week

www.vacuumsalesinc.com

parts@vacuumsalesinc.com



*We Service
 What We Sell*



800-547-7790 • fax: 856-627-3044

Helping you get the job done!



2013 Freightliner Cascadia

Detroit power, 10 spd, 420k miles,
NEW 3,500 gal tank,
NEW NVE607, 380 CFM
\$65,000



2013 Freightliner Cascadia

Cummins ISX, 10 spd,
New 3,500 gal vacuum tank ,
NEW NVE607 380 CFM
\$66,000



2013 Freightliner Cascadia

Cummins ISX , 10 spd, Jake brake, 441k miles,
NEW 3,500 gallon vacuum tank,
NEW Fruitland RCF870, 501 CFM
\$67,500



2013 Kenworth T660

Cummins ISX15 450 hp, automatic,
NEW 3,500 gallon vacuum tank,
NEW NVE 607 380 CFM vacuum pump, Aluminum
fuel tanks, truck serviced and DOT inspected
\$85,000



2013 Freightliner Cascadia

Cummins ISX, automatic,
NEW 3,500 gallon vacuum tank,
NEW Masport vacuum pump,
aluminum hose trays, tank lined inside,
36 inch rear manway
\$72,500



2013 International 4300

DT466 260, auto, GVW 33,000, 221,000 miles,
New 2,500 gallon steel vacuum tank,
New Masport HXL75, 36 inch rear manway,
aluminum hose tray, interior tank lined, air brakes,
aluminum fuel tanks, white color, lease maintained
\$60,000



2012 Dodge Ram 4500 HD

Cummins 6 CYL 6.7L Diesel, automatic,
191,000 miles, 750 gallon used aluminum vacu-
um tank, NEW NVE 304 vacuum pump
\$45,000



2013 Peterbilt 337

PX7, Allison Automatic, under cdl,
211,223 Miles, NEW 2,500 gallon vacuum tank,
NEW NVE607 380 CFM, NEW aluminum rims,
Truck serviced and dot inspected
\$69,900

Best prices on 2,000-5,000
gal. pump trucks,
Non-CDL, tandem 3,500 gal.
pump trucks, tri-axle builds.

We install pressure washers.

We can install any
CFM pump of your choice.

We can also paint
any color you'd like!



**PHOENIX
TRUCK CENTER**

Atlanta, GA

404-844-8968 • 678-371-4782

sales@phoenixtruckcenter.net

www.PhoenixTruckCenter.net

Jim Anderson, Ph.D.



Jim Anderson, Ph.D., is an emeritus professor at the University of Minnesota Department of Soil, Water and Climate. He works with the National Association of Wastewater Technicians and is a recipient of the pumping industry's Ralph Macchio Lifetime Achievement Award. Send Anderson questions about septic system maintenance and operation by email to editor@pumper.com.

Let's Probe the Outer Limits of Biomat Benefits

How slow is too slow when effluent starts to enter the clogging zone? | By Jim Anderson, Ph.D.

Recently, a reader in Canada asked about the beneficial characteristics of the biomat. He had read some articles or fact sheets where the author maintained the biomat has no beneficial aspects and if the total system could be oxygenated and biomat eliminated, there would be no problems in septic systems accepting effluent.

As I read an article the reader referred to, I was struck that the article referred to two different distribution methods. The biomat occurred in either of two locations — on the bottom and sidewalls of absorption trenches or beds, and/or the top surface of a pretreatment aerobic filter. In the first case I assume they are talking about a typical sewage treatment trench with gravity distribution since they describe biomat developing at the bottom of the trench where the first few holes in the sewage pipe are located. The second is where effluent is applied by pressure to a media filter (sand, fabric; etc.) These are two entirely different environments and should not be confused with each other.

Considerable research has been conducted since the late 1960s and early 1970s on development of what was then called a crust or clogging zone (now the biomat) and its impact on slowing down the rate of water infiltration into the soil and the effect that has on treatment of bacteria, virus and nutrients.

Here are a couple short quotes from one of the initial research papers on soil as a medium for treatment of septic tank effluent. "In naturally well-drained soils, the soil horizons under the absorption bed will be unsaturated because of the impeded flow through the crust." And later: "Septic tank effluent passing the crust layer and going slowly through a soil will have time for many reactions to occur at the surfaces of particles and in the soil solution, which is in contact with air-filled voids." They go on to state that if a crust were not present, flow is through the larger soil pores and voids and there is very little time for purification to occur.

BIOMAT FOR THE ASSIST

Subsequent research has expanded on the importance of the biomat in treatment of sewage effluent in soil. It has also shown the biomat as

Design numbers we use today are based on corresponding research on what happens to flow rates into soil with varying biomat (crust) resistance and different soil moisture and aeration conditions in the soil.

being a larger part of the treatment processes than merely slowing down the flow rate into the soil allowing unsaturated (aerated) soil beneath the trenches.

There is no question biomat assists in the treatment processes within soil under gravity distribution. Design numbers we use today are based on corresponding research on what happens to flow rates into soil with varying biomat (crust) resistance and different soil moisture and aeration conditions in the soil.

The reader gave me an example of how he was having trouble with systems and gave this account:

"After examining several of these failures it became apparent to me that the problem was high levels of biomat. In our area the bed of choice is often a sand filter bed with 2 1/2 feet of sand filter media with about a foot of stone on top containing the distribution pipe. Alternatively, chambers are placed directly on the filter media.

A typical installation would be a three-bedroom house yielding a daily design load of 422 gallons. The [Ontario Building Code] allows for a daily dosing of (19.8 gallons/10.8 square feet), which yields a bed design of a little over 226 square feet. Given the area of the sides and bottom of the excavation containing the filter media, and even assuming a T-time of 100 minutes/inch, the underlying soil should have been capable of absorbing almost eight times the daily design flow. Further to this, when these failed beds are opened, it is often discovered that the stone layer is totally blocked by biomat, while the filter media appears almost pristine."



New & Used Trucks Available



TRUCK SALES • TANK SALES • PUMPS/PARTS • MANUFACTURING • CUSTOM RIGGING



2021 Peterbilt 337

- 2000 Gallon Steel Tank
- Jurop Pump
- Allison Auto
- 300 hp
- Under CDL
- Chrome Package
- Jetters, Hoses and Tool Boxes Available

-\$109,000 -



Tanks Ready to Ship

- **2100 GALLON** •
painted steel or polished aluminum
- **2500 GALLON** •
painted steel or polished aluminum
- **3600 GALLON** •
painted steel or polished aluminum



2021 Int'l MV607

- Cummins ISB 6.7
- Allison Auto Trans
- Under CDL
- 2100 Polished Aluminum Tank
- Masport Viper PnP

-\$119,000 -

FOLLOW US:

CALL US TODAY – Rayel: 501-388-9565 | Logan: 501-388-9464 | Caleb: 281-914-1192

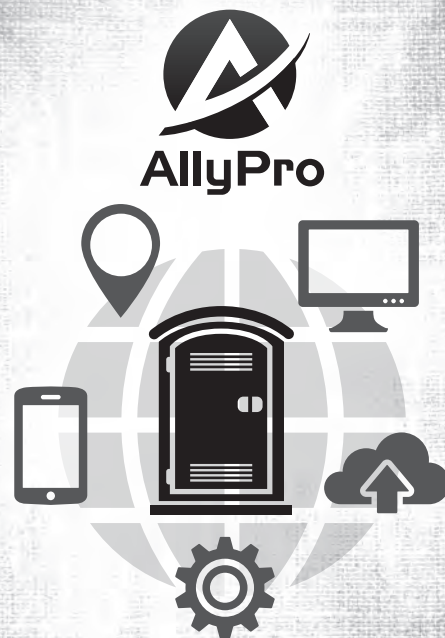
Here is a shortened version of my analysis: His original soil would have a percolation rate of 100 minutes per inch (very slow); a mound system would be the system of choice. If the percolation rate was actually how fast water would move through the soil, he is correct that there should be room under the bed to accept the effluent. However, all of us should realize the percolation rate is not a measure of the actual hydraulic conductivity of the soil but more of an index number.

RUNNING THE NUMBERS

What is the actual rate in soils he described? A lot less, on the order of 0.40 inches per day, which is equivalent to about 0.24 gallons per square foot per day. This means it will take 1,875 square feet of area to accept the effluent under the sand bed. Anything less than that will cause one of two things (or both) to happen: water backs up into the sand bed reducing oxygen levels and causing a buildup of biomat. This would make the sand and bed look bad as he describes. Or effluent breaks out the sides of the bed to the surface.

I also looked at the numbers he provided for their sand beds compared to what we recommend. We recommend loading our sand beds in mounds at no more than 1.2 gallons per day/square foot. If sand is loaded less than 1.2 gallons per day/square foot, good treatment is provided.

They are loading their sand bed at a rate equivalent to 1.85 gallons per day per square foot or at least 1.5 times our design numbers. Their bed is undersized by about 150 square feet. This combined with not adequately sizing the area of natural soil under the sand fill is a sure recipe for failure and not due to the biomat. The excessive biomat development he observes in the system indicates there is a problem but is not the problem. In a future column I will look more closely at biomat and pressure distribution. **P**



A complete Enterprise Business Manager (EBM) designed for the Portable Sanitation Industry



www.allypro.com | (888) 974-8488 | info@allypro.com

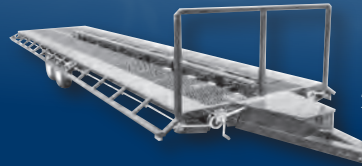
Wee Engineer WITH IMAGINATION

Tanks • Pumper Trucks • Vacuum Tank Trucks • Portable Toilet Trailers • Custom Fabrications • Environmental Equipment

In Progress



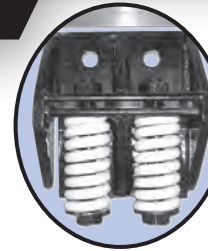
**2150 Gallon
& 2500 Gallon
Vacuum Tanks**



**BEST HEAVY-DUTY PORTABLE
TOILET TRAILERS ON THE MARKET**

24 ft....\$8,800 • 28 ft....\$9,100 • 34 ft....\$9,990

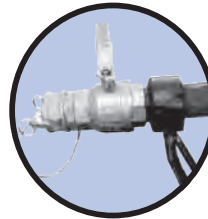
Our customers are pleased with the time they save loading and unloading toilets.



SPRING MOUNTS

decrease fatigue on your tank frame, mounts to most tanks, easy bolt or weld-on style, heavy-duty stress relieved springs.

Mounts with springs..\$82.00
Springs alone\$11.00 ea.



HEATED COLLARS

Preventing your valves from freezing will help your profits during the winter months.

1.5-2" \$110 **4" \$198**
3" \$165 **6" \$297**

Follow Us   



PO Box 39, Dayton, IN 47941
Toll-Free: **877.296.2555**
Phone: **765.296.2027** Fax: **765.296.3027**
www.wee-engineer.com

THE HOSE AND FITTINGS EXPERTS

LOWEST PRICES ALWAYS

ORDER ONLINE
24/7

www.pumperhose.com



Kanaflex

FLEXAUST



Ugerflex

PLASTIFLEX
Hydr. System Solutions

NAHAD | Safety, Quality & Reliability
HOSE SAFETY INSTITUTE



ABBOTT RUBBER COMPANY, INC.

1700 NICHOLAS BLVD. • ELK GROVE VILLAGE, IL 60007 • 800.852.1855

E-MAIL sales@abbottrubber.com • WEBSITE www.pumperhose.com



YOU KEEP THE WORLD RUNNING

RUN YOUR BUSINESS BETTER WITH
CRO SOFTWARE SOLUTIONS

NOW OFFERING FOR A LIMITED TIME:
NO INITIAL UPFRONT COSTS
LIFETIME LICENSING FEES WAIVED
NO CONTRACTS

Link your entire team in an all-in-one cloud based, user-friendly interface.

BOOK A DEMO NOW

cro 
Software Solutions

1-844-276-2467
CROSOFTWARESOLUTIONS.COM
SALES@CROSOFTWARE.NET

Tax Relief Available for Small Businesses Providing Paid Leave During Pandemic

The rules aim to help employers keep workers on the payroll while ensuring that employees do not have to choose between a paycheck and public health measures | **By Kyle Rogers**

The coronavirus pandemic has created a challenging climate for small businesses. Financial concerns are butting up against public health interests.

With that challenge in mind, the federal government earlier this year enacted the Families First Coronavirus Response Act. The act applies to businesses with fewer than 500 employees. It allows for employees to receive paid sick leave, while giving employers the means to handle that paid leave through tax credits.

Here's a breakdown of how it works according to information from the U.S. Department of Labor and the Internal Revenue Service.

For employees

Employees can receive up to 80 hours of paid sick leave at 100% of their regular pay rate if they're unable to work due to quarantine or they are experiencing COVID-19 symptoms and are seeking a diagnosis.

The paid leave is reduced to two-thirds of an employee's regular wages if they're caring for a person under quarantine, caring for a child whose school or child care provider is closed or unavailable for reasons related to COVID-19, or experiencing substantially similar conditions as specified by the U.S. Department of Health and Human Services.

If necessary, an employee unable to work due to the child care provision is also eligible for an additional 10 weeks of paid leave at two-thirds of their pay.

For the initial two weeks, part-time employees are eligible for paid leave for the average number of hours they work over a two-week period. For the additional 10 weeks allowed under the child care provision, part-time employees are eligible for paid leave for the number of hours they normally would've worked over that period.

Employees can receive up to 80 hours of paid sick leave at 100% of their regular pay rate if they're unable to work due to quarantine or they are experiencing COVID-19 symptoms and are seeking a diagnosis.

For employers

To assist businesses in providing paid sick leave, two tax credits are available.

With the paid sick leave credit, employers are eligible for a refund at an employee's regular rate of pay up to \$511 per day for a total of 10 days. This is for employees who are in quarantine or have COVID-19 symptoms and are seeking a diagnosis.

For paid leave related to child care, employers can claim a reimbursement for two-thirds of an employee's regular rate of pay up to \$200 per day for 10 days. Employers are also entitled to an additional tax credit based on costs to maintain health insurance coverage for the employee during the leave period.

The second credit gives employers relief for covering paid leave for workers using the additional 10 weeks provided by the child care provision. The same rate of two-thirds of an employee's pay up to \$200 per day applies, for a total cap of \$10,000.

To take immediate advantage of the credits, businesses should use funds for the paid leave that they otherwise would have paid to the IRS in payroll taxes. If those don't sufficiently cover the cost of paid leave, however, employers can request an expedited advance from the IRS by submitting a claim form.

For example, a business required to pay \$5,000 in sick leave that would have had to normally deposit \$8,000 in payroll taxes can instead use those tax savings to make the sick leave payments. The remaining \$3,000 is all that would have to be deposited for taxes.

On the other hand, if a business has the same amount of \$8,000 to deposit for payroll taxes but is paying out \$10,000 in sick leave, it can use the entirety of those tax savings to cover the paid leave. The business would then have to file a claim for reimbursement on the remaining \$2,000.



- George, VP of Sales 954-558-0816
- Roger, Regional Sales Manager 305-409-8603
- RJ, Inside Sales & Parts Manager 786-328-9330

70 years in Business!



2021 Peterbilt 348, Cummins 350 hp. Auto, 4000 carbon steel tank, Fruitland 510 cfm pump, chrome package. ***146,900 Plus FET**

2021 Peterbilt 348, Cummins 350 hp, 10 spd manual, 4000 carbon steel tank, Fruitland pump 510 cfm. ***140,700 Plus FET • In Production!**



2020 Mack MHD. Chrome package, Cummins 350 hp, Jake brakes, Allison auto trans., 4200 gal. alum tank, Fruitland 510 cfm pump, 60K GVW. ***158,500 Plus FET**



2020 Mack MHD, Cummins 350 hp, Allison auto, 4000 carbon steel tank, Fruitland 510 cfm pump, chrome package, beautiful interior. ***155,000 Plus FET • In Stock!**



2021 Peterbilt 337, 300 hp, auto, 2500 gal. alum. tank, Masport 510 cfm pump. ***129,582 • In Production!**



2021 Mack MHD, Cummins 350 hp. Allison auto, 4200 alum. tank, NVE blower 530 cfm. Chrome package, beautiful interior. ***172,000 Plus FET • In Production!**



2021 Mack, Cummins 350 hp. Auto, 4000 gal. carbon steel tank, NVE Blower 4307, Chrome Package. **2 Available • In Production!**



2021 Peterbilt 348, Chrome package, 350 hp, Cummins, auto, 60K GVW, 4200 gal. alum. tank, NVE B500 blower 431 cfm. ***149,900 Plus FET**

**Wishing
All Our
Loyal Customers
and
New Customers
a
Merry Christmas
and a Prosperous
New Year**

**Buy Yourself
A New Truck
For Christmas**

Items of note

Eligible employers can claim the tax credits based on the paid leave they provide between April 1 and Dec. 31, 2020.

Businesses with fewer than 50 employees could qualify for an exemption from the paid leave requirements related to child care if those requirements would jeopardize a business's ability to continue.

All of the paid leave amounts are also available for self-employed individuals under similar circumstances. Credits are claimed on the income tax return.

Whether a company meets the under-500-employee threshold for compliance depends on its employee count at the time employee(s) need to take paid leave. Companies hovering around 500 need to keep careful watch. If a company is initially over 500 but later drops under and an employee still needs paid leave, it now needs to comply. However, if

an employee is receiving paid leave and then the company adds to its staffing numbers putting it over 500, it does not affect that employee's right to continue on paid leave.

Employees have a right to paid leave for the purposes of child care if their child's school is operating under a hybrid schedule of some virtual learning and some in-person instruction. The school is deemed "closed" on those virtual learning days and an employee can receive paid leave. But if a school is fully open and the employee has elected to do virtual learning for the child after being given the choice, paid leave for child care does not apply under the Families First Coronavirus Response Act.

Employers need to retain documentation that supports employees' paid leave and the associated tax credits for four years.

Further guidance about the Families First Coronavirus Response Act and the related tax relief is available at www.irs.gov/coronavirus. **P**

GAG SIM/TECH FILTER

The Last Line of Defense
for Pressurized Distribution Systems

NO VAULT PUMP FILTER

- » 41% open area (139 square inches of open area on the 6" x 18" screen model)
- » Fits most turbine pumps (also known as deep well pumps)
- » Adds only 1/4" of height to pump making it easy to retrofit to existing systems
- » Has 3" sludge shield at the bottom of the filter
- » Disassembles for thorough cleaning if needed
- » Easy to clean surface
- » Made of PVC plastic so will not corrode
- » Self adjusting seal
- » Very light in weight so it does not make pump insertion or removal difficult
- » Screen available from 18" to 42" long
- » Also available with 316L stainless steel screen



Can be used in a manifold to handle almost any flow-rate

US Patent# 5,885,452
CAN Patent# 2,237,751

THE STF-100 SERIES PRESSURE FILTER WILL:

- » Lower total suspended solids (TSS)
- » Protect with low head-loss (.5002 ft)
- » Extend the life of the distribution field
- » Filter to .062", .024", .007", or .004"
- » Pass up to 83.8 gallons per minute @ 1 PSI
- » Allow for easy installation and service
- » Protect from improper system maintenance
- » Protect from system abuse
- » Satisfy your customers

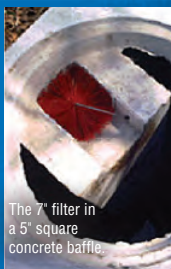
GRAVITY FLOW BRISTLE FILTERS FOR RESIDENTIAL OR COMMERCIAL SYSTEMS, SEPTIC TANKS, ONSITE SYSTEMS OR EVEN YOUR POND!

Very effective at filtering tissue, hair, lint, and other solids common to waste water. And flexible enough to fit just about anywhere, most common applications are standard "tees" and square concrete baffles as shown below.



The 4" filter in a 4" Tee.

Sizes:
4" yellow
6" white
7" red
8" blue
Patent# 6,811,692



The 7" filter in a 5" square concrete baffle.



ORIFICE SHIELDS

- » The Original Orifice Protector
- » Sturdy design for all applications
- » Easy to position
- » Will not fill with gravel in any position
- » Large discharge area that does not clog
- » Large open area
- » No moving parts to stick
- » Will remain in place, even without glue

FLOAT TREE ACCESSORIES

- » Easy adjustments
- » No tangled wires
- » No float hang-ups
- » No straps to break
- » No entering tank
- » Easy pump repairs
- » Very affordable



Check Out Our Other Quality Solutions!
Risers, Security Nets, Clean-Out Sweeps, etc.

gag-simtech.com
888-999-3290

GAG SIM/TECH FILTER



Wilson, North Carolina
252-206-1641
www.integrity-tank.com

Backed by more than 85 years of combined experience in custom tank building



Custom builds include:

- Septic/ Grease/ Industrial Waste
- 200 - 6000 Gallons
- Portable Restroom Service Trucks
- Aluminum/Steel/Stainless

Additional Services:

- Vacuum pump repairs, conversions, and refurb

Integrity Tank where quality and service exceed expectations

CONTACT CHAD DAVIS for QUOTES at 252-450-9168

NUCONCEPTS

VERY IMPRESSIVE PORTABLES

FOR OVER 25 YEARS
THE ORIGINAL "VIP"



- SOLAR POWERED
- SELF-CONTAINED
- FLUSHING PORCELAIN TOILET
- COUNTER with TRASH BIN
- SINK-FAUCET-MIRROR
- LED INTERIOR LIGHTING
- LED EXTERIOR LIGHT
- POWER ROOF VENT
- NEW MOTION SENSOR
- OPERABLE VENTS
- 3 LOCKING SERVICE DOORS
- PERMANENT SKIDS
- 600 LBS. DRY WEIGHT
- AVERAGE 125 USES

AVAILABLE OPTIONS

WINTERIZED PACKAGE

WARM WATER HEATER - A/C - HEATER - POWER CONVERTER - CITY WATER INLET
CITY SEWER DUMP VALVE - DISPENSER KIT - TRAILER CONFIGURATIONS



1737 S. Vineyard Avenue, Ontario, California 91761

www.nuconcepts.com • info@nuconcepts.com • 800-334-1065 • 909-930-6244

PROUDLY MADE IN THE USA

Happy Holidays From KeeVac Industries, Inc.

Kevin
Matt
Jessica
Paxton



Trim Your Tree For The Holidays

Take advantage of
Section 179 or
168(k) in 2020 for
up to \$1M on
qualifying
equipment.

Visit www.section179.org to see what you can do this year. Savings good on all qualifying equipment orders placed in 2020.



Call: 866-789-9440 ❄️ www.Keepvac.com

Colorado residents concerned less stringent development rules will harm water quality

By David Steinkraus

A proposal to increase residential development in the Dolores River Valley has residents of Montezuma County, Colorado, concerned about water quality and housing density.

The county Planning Commission is recommending a decrease in the minimum lot size for a single-family home from 10 acres to 1 acre, according to *The Journal* of Cortez, Colorado. Setback rules would also change. Instead of 100 feet, septic systems would have to be only 50 feet from the river, which is the state standard. The county forms the Colorado portion of the Four Corners area.

A 10-acre minimum lot size was established to help protect the quality of the region's main water source, and when *The Journal* reviewed public comments it found most in favor of keeping the current density limit.

When he presented the recommended change, the commission chairman said modern engineered onsite systems provide sufficient protection for water. Those are already required for new construction, and that standard would remain in place for the Dolores River Valley.

New York

In its latest move to fight water pollution, the Suffolk County legislature is considering a requirement for nitrogen-reducing onsite systems for every new home. If approved, the rule would take effect next year.

In addition, the rule would require an advanced treatment unit for other buildings such as condominiums, multifamily housing, and commercial or industrial centers. Any expansion of a home or other project would also have to include an ATU if the expansion required an addition to, or modification of, the wastewater system.

Suffolk County, which occupies the eastern end of Long Island, has been working for several years to reduce pollution along its Atlantic Ocean shore. In 2017 the county banned cesspools, which were a common method of wastewater treatment, and some municipalities in the county also began requiring ATUs.

Indiana

A new wastewater ordinance for DeKalb County is having its first test as a few residents face a requirement to abandon their onsite systems and connect to a municipal sewer line.

Seven homes may be required to connect because the line is now within 300 feet of their properties. If a lift station is needed, the cost could reach \$35,000 to \$40,000, reported *The Star* of Kendallville, Indiana. County commissioners voted to halt enforcement of the ordinance until the city finishes studying whether a lift station is necessary.

Commissioners will also consider changing the cost limit for connecting to sewer. Currently the ordinance requires a connection if sewer service would be less than 150% of the cost of new onsite treatment, but commissioners are thinking about decreasing that to 125%.

Wisconsin

A court of appeals ruled against a man who sued a pumper because he fell through a septic tank lid.

In October 2016, David Steinke, who lives in the northern Wisconsin community of Hayward, stepped on a rusted tank lid and fell through it into the steel tank. He said he was in septicage up to his chest, couldn't climb out of the tank for five hours, and suffered from recurring nightmares. He sued Scott's Septic Pumping and its insurers for failing to warn him about the lid when they pumped his tank a month before.

But the pumper had warned Steinke about the lid three years previously, and about a month before the incident tried to warn him again, but Steinke did not respond to a knock on his door, said news reports. The Third District Court of Appeals sided with a district court judge and found the pumping company was hired only to pump the tank and not to inspect or repair it. **P**

FREE SHIPPING SALE!

FREE SHIPPING

ON ORDERS OF \$5,000 OR MORE.

\$139.99 MAX SHIPPING

On orders of \$999.00 - \$4,999, \$139.99 is the most you will pay for shipping. If actual shipping is less, you pay less.

\$20 OFF SHIPPING

on orders between \$500 and \$999. Use promotion code SAVE2020.



LOOK
for our catalog
in this issue!



T&T Tools, Inc.

Fax: 800.521.3260

Email: sales@mightyprobe.com

800.521.6893

www.MightyProbe.com



Call for a FREE Catalog

Call for a FREE Catalog

HOOKS...

- > Several different styles of heat-treated hooks are available
- > Top Poppers are great to open manhole covers
- > The Handy Hooks allow two handed use

PROBES...

- > Insulated, standard, and specialty soil probes
- > Metal shaft sizes: 3/8" round, 3/8" hex, or 7/16" hex
- > Replaceable tips are threaded on and hardened
- > A "slide" allows the handle to pound the shaft into the ground

MRP

MILWAUKEE RUBBER PRODUCTS

HOSE & EQUIPMENT SPECIALISTS

Kanaflex
Hose Distributor

Kanaflex *FLEXAUST* PLASTIFLEX tigerflex **Juop** E.T.N. **NVE**

Fast Shipping!

www.MilwaukeeRubber.com 800-325-3730

Wallenstein vacuum pumps

ENGINE DRIVES

The **WALLENSTEIN** family of Portable Sanitation Pumps are the most **rugged, dependable** and **longest lasting** vacuum pumps available today.

since
1969

151 80 CFM



5.5 or 6.5 HP
Honda Engine

11 HP
Honda Engine

202 115 CFM



13 HP
Honda Engine

302 165 CFM



EM elmira
machine
industries inc.

1.800.801.6663
wallenstein.com

HANDWASH STATIONS

MANUFACTURED BY MCKEE TECHNOLOGIES

EXPLORER

Explore the finest
in sanitation...

...when SANITATION counts

CLASSIC 8 SINK UNIT



Faucets: Metered water-saving
Fresh Water: 225 US gallon,
horizontal poly tank
Grey Water: 250 US gallon,
galvanized holding tank, 2" valve
Dispensers: (4) Paper towel, (4) soap

Counter Tops: Polished stainless
steel with (8) sinks, 12" diameter
Finish: Epoxy primer with
polyurethane top coat
Water Heater: 5 US gallon, 110 V
Water Pump: 110 V On-demand



The galvanized grey-water tank is horizontally mounted inside the chassis with a 2" discharge port at the rear. All built onto a commercial grade trailer chassis for easy towing.

1.866.457.5425
mckee technologies.com

pickuptanx
INDEPENDENT • DRIVE

Standard Sanitation
300, 450, 650
& 840 USG

All VACUTRUX sanitation systems are built with one Major commonality... They are built to last! From the bulletproof design of the Wally VP to Hot Dip Galvanizing, these systems will not let you down.

Only
From...

vacutrux



1.800.305.4305
vacutrux.com

Powered by
Wallenstein
vacuum pumps



Connecting With Customers Through the Keyboard

Don't let your fingers get ahead of your brain if you add a chat service to your website | By Kate Zabriskie

Customer: Hi, I'm having a problem with my bill. I'm being charged \$50 more than what I expected. Could someone please help? I'm finding this very frustrating. Thank you.

Chat Agent: Hello! Glad you are chatting with me this morning! This is Matt. What can I do for you today?

Customer to Himself: Huh? Well for starters, Matt, you could read what I typed before asking what you can do! Furthermore, you can take that smile off your face.

Website chat communication with customers is becoming a popular alternative for small businesses today, even wastewater service providers who understand that more consumers would rather tap out inquiries on a keyboard than pick up a phone. Providing exceptional service via chat involves more than simply choosing a technology platform. Chat is a distinct communication channel with its own set of rules, and if you choose to implement a chat system at your pumping company, you need to prepare service representatives to use it effectively.

Step One

After you've chosen a chat platform, or while that activity is in process, determine who on your team is well-suited to serve customers online. Chat service providers should be able to type, and they should have a basic command of English spelling and grammar. And depending on your location, it may be helpful to have a bilingual representative who is fluent in Spanish to answer questions from Hispanic customers.

Step Two

Once you have a team in mind, identify some rules to guide their chats. The following questions are examples of basic considerations you should know the answers to before your representatives start typing.

- How many chats should an agent handle at once? (In the beginning, nobody should attempt more than one, and even experienced agents shouldn't divide their attention among more than three.)

The point is to plan for the expected. Just as telephone service agents in most industries should know how to handle the top 20 or 30 customer requests without having to reference a lot of documentation, the same is true for chat.

- What topics can and can't be addressed via chat? Company owner preferences and industry regulations may limit what your representatives can and can't say.
- When will you move customers to a different mode of communication if chat is not appropriate?

Step Three

Sometimes companies implement chat, and the tone of what's typed takes on a stilted or off-brand look and feel. For that reason, it's important to think about what on-brand messaging looks like before rolling out the chat platform.

How should a chat start if a customer has already shared information? What words and phrases align with your brand? What words and phrases should providers avoid?

How should representatives address angry or frustrated customers? In what way should greetings differ?

A good way to start thinking about your company's look and sound is to start chatting. Visits sites that use chat. Think about each experience: what you liked, what you didn't, the brand you felt and so forth.

Step Four

Be prepared for the obvious. Anyone who has worked in service usually starts to notice patterns. For example, if the provider is an online retailer, close to the holidays the website may receive more inquiries about delivery times. If the provider is a utility, representatives may realize they receive more inquiries about billing on certain days of the week. In the case of septic pumping, you may get specific inquiries after a flooding event or around holidays when emergency calls are more likely to occur.

The point is to plan for the expected. Just as telephone service agents in most industries should know how to handle the top 20 or 30 customer requests without having to reference a lot of documentation, the same is true for chat. Consistency is essential. This is especially true when it comes to the basics.

Before being set loose with a keyboard, go through both systems training and role-playing to address common inquiries.

Step Five

Determine the extent to which you wish to use canned responses. Prewritten text has its pluses and minuses. On the plus side, it's quick, it's not written in the moment, and it's had the opportunity to be proofread by one or more people. On the other hand, canned text can sound canned. Furthermore, representatives sometimes choose prewritten responses that don't get to the heart of what a customer is asking.

So what's a small business to do? The answer to that question varies. No matter the option chosen, canned text should sound conversational. If you wouldn't say what's written in the course of natural speech, it probably isn't right.

Chat is supposed to be a dialogue. It's not a brochure, the text from a website, or worse still, verbiage from a policy or legal document.

One way to help maintain a conversational tone is to keep your text short. Long sentences usually equate to a longwinded or unnatural feel.

A good place to source potential prewritten responses is from your representatives' actual chats. If your office is like most places, some people will show a natural gift for chat. Why not leverage their strengths and skills?

Step Six

Learn from your failures and your successes. When service goes wrong, most strong businesses address the shortcomings. Beyond fixing what's broken, the best companies also invest time in figuring out what went right and why. They then replicate the good.

As with any service interaction, chat can go well, or it can go poorly. The key is monitoring, course correcting and standardizing success. Customer service representatives and their supervisors should regularly review chats. What can we leverage? Where are the opportunities? What was on-brand? What was off-brand?

The trick is to systematically ask and answer them. The more methodically you evaluate your chats, the quicker you will capitalize on what works and eliminate what doesn't.

Step Seven

Chat training is not a one-and-done activity. Needs change, technology evolves, and staff turns over. Ideally, you should focus on one or two best practices a week, evaluate the prewritten text twice a year, and spot-check transcripts daily.

Chat is no longer a novelty, and more customers expect their service providers to offer it. No matter where your business is in the chat-implementation process, there is always room to improve the way you connect through a keyboard. **P**

Tank World Corp

ALL MAJOR BRANDS IN STOCK
AND READY TO BUILD.



HAPPY HOLIDAYS
FROM THE
TANK WORLD FAMILY



Financing Available



We build Vacuum trucks, Septic trucks,
Porta Potty trucks, and Body swaps.

We can do Steel, Stainless Steel and Aluminum.

NOT JUST BUILDING TRUCKS BUT BUILDING RELATIONSHIPS

Parts and Accessories In Stock

ASME & R stamp accredited

UL 142

www.tankworldaz.com

12001 W. Peoria Ave
El Mirage, AZ 85335

Jerry's cell 623-680-2037
tank.jerry1@gmail.com

Office 623-536-1199
Fax 623-935-4514
service@tankworldaz.com

DROP BY.



www.facebook.com/PumperMag



2021 M2-106 350HP Cummins, Allison Auto., Full Lockers, 4000-Gal. Alum., 4310 and 4307 NVEs Available. Multiple Units!



2021 M2-106, 2500-Gal. Aluminum, 300HP Cummins L9, Allison Automatic, Multiple Units Available!



Call 920-997-4922

See our entire inventory at truckcountry.com

TRUCK SALES | EXPERT SERVICE | PARTS | FINANCING



Vacuum Technology

Since 1939
Made in the USA



Pumps - 35 Thru 230 CFM Vacuum (only) & Vacuum/Pressure



PowerPaks - Gas & Diesel Powered Belt Drive & Direct Drive

ProVac Industrial Pumpout Unit
Ideal for the Indoor / Remote Jobs
Built to Last!!!

Sales & Customer Service

800-367-0972

orders@westmoorltd.com

www.westmoorltd.com

Westmoor Ltd., 906 West Hamilton Ave, Sherrill, NY 13461



In Business Since 1959

TUFF-JON

Portable Toilets | Holding Tanks | Hand Wash Units | Accessories

Wishing You Happy Holidays



TJ Kids



TJ Shorty



Tuff-Jon



Tuff-Jon III



100 Gallon Fresh Water Supply Tank



60 Gallon Rinse Tank



Containment Tray



Sink Lifting Bracket



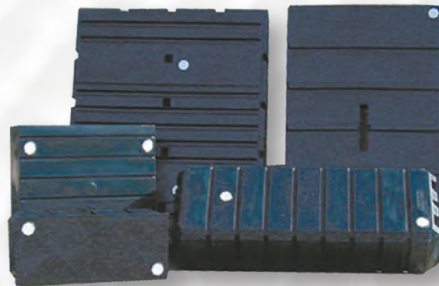
90 Gallon Free-Standing Sink with Optional Handicap Accessible Sink (45 gallons fresh water)



TJ Handy Stand Waterless Gel Touch Dispensers



TJ Junior Single Free Standing Sink (16 gallons fresh water)



- Tank sizes 60, 105, 225, 300 and 440 gallons.
- Standard holes are 2 - 3" holes with plugs
- Can customize holes to match your specs



Interior View of Deluxe TJ-III

- Lifting Bracket Assembly
- Sky Heater
- Corner Shelf
- Towel Dispenser
- Hand Washer Available For Both Styles of Tuff-Jon



The Tuff-Jon Company Inc. Toll Free: 1-800-843-9286 | 812-985-2630 | Fax: 812-985-3671
 2930 S. St. Phillips Rd. | Evansville, IN 47712 Email: aschenk@tuff-jon.com | Website: www.tuff-jon.com

Promoting Professional Training and Certification in Manitoba

Installers and pumpers want to play an important role in writing new provincial wastewater policy

In States Snapshot, we talk to a member of a state, provincial or national trade association in the decentralized wastewater industry. This time we visit a member of the Manitoba Onsite Wastewater Management Association.

Name and title or job description: Randy Thomas, owner-operator

Business name and location: Wayne's Backhoe & Excavation, Victoria Beach, Manitoba

Services we offer: Maintenance, installation and service of wastewater systems.

Age: 55

Years in the industry: Our family-owned company has been installing septic systems since 1980, first with Wayne Thomas, my uncle, then myself since 2006.

Association involvement: My wife Onale and I currently hold positions with the Manitoba Onsite Wastewater Management Association (MOWMA), formerly Onsite Wastewater Systems Installers of Manitoba (OWSIM). She is the secretary and I am vice president. We have been members for 16 years.

Benefits of belonging to the association: Our board of directors is continually working on benefits the association can provide its membership. Important benefits at present are liaison and advocacy with the government of Manitoba as our current guidelines and policies are being rewritten. Change is coming and we want to be part of that change. The association recently became a member of the Western Canada Onsite Wastewater Management Association (WCOWMA). They offer complete training packages so we don't have to reinvent the wheel every time we try to do something. And we have a larger voice in dealing with governments.

Biggest issue facing your association right now: The need to build a stronger membership. In our province, there is no real need for installers to belong to an association. Homeowners are allowed to install their own wastewater systems, which counters any real necessity for training, certification and association involvement. We are working to have these policies changed to stress the importance of properly installed wastewater systems through training and certification. MOWMA is currently working with the province on developing curriculum that will see a new standard of certified installers. This is a positive between government and industry.

Our crew includes: We have six employees, three of whom are seasonal workers. Each brings a little different skill set to our company, allowing us to diversify. Onale started out driving the tandem and working on jobs, creating a healthy knowledge of the work we do from a field perspective. She now uses that knowledge to communicate with customers and manage the

Right: Randy Thomas with a 2012 GMC Sierra 3500 SLT Duramax Crew Cab pickup.



business, creating systems to help keep the day-to-day operations running smoothly. Onale obtained necessary training to act as our safety coordinator and internal auditor for our COR safety program (Certificate of Recognition, a national certificate for safety), which includes writing, teaching and inspecting safety policies and procedures. I describe her as the quarterback for Wayne's Backhoe.

Typical day on the job: Our day starts at 7 a.m. with some office time to check messages and respond to any changes from the day before. Our workers come in by 7:30 and get the trucks and equipment checked out. After a quick daily briefing on the tasks at hand, the guys get the right equipment, tools and materials ready and loaded. We aim to get out of the gate by 8 a.m. We head back to our shop for a barbecue lunch most days. It's nice to shut the machines off for a bit and it gives us the chance to discuss our day. We find that providing lunch for our crew is an easy way to show appreciation and allows us more opportunities to communicate as a team. Operations are done Monday through Friday. On weekends we open our yard for aggregate sales and we see new customers and provide estimates.

The job I'll never forget: After a customer finished rebuilding his cottage for which we installed the septic system, we were asked to develop their yard. At the start, the yard was solid bush and large trees. The ground was uneven and it was hard to believe that the property was lakefront. We spent days working on the property taking out many loads of brush, trees and roots, leveling, installing soil and sod, a stone patio, walkways, and a fire pit. We even made a custom sandbox for their grandchildren. When we were done the view of the lake was beautiful and the yard was pristine. It was a job that was very visually rewarding.



Above: Randy and Onale Thomas with Blue (in front) and Maggie (in the cab), a CASE CX50 excavator, a 2002 Sterling tandem-axle truck with RENN dump box and a Bobcat T770 compact track loader.

My favorite piece of equipment: I really like our CASE 580SM loader backhoe. Loader backhoes have been part of our company since 1980. Before bringing in excavators, everything was done by the loader backhoe. Its capability will never grow old.

Most challenging site I've worked on: We had a project that was a new home construction on an old farm field. We installed a Waterloo Biofilter Systems secondary waste system. It was our first one so we were learning this new system and installing it at the same time. We took time out and double-checked everything — except the weather. It rained for days and the more we worked, the deeper we went. We were really stuck in the mud, which was mixed with grass straw and basically turned to cement. It started out well but became very challenging with the “Manitoba gumbo” we were working in. It took weeks to get that field out of our tracks.

The craziest question I've been asked by a customer: A customer inquired about putting in a septic field and a graywater field — and needed them on either side of the house because he didn't want one to fill up the other.

If I could change one industry regulation, it would be: To stop homeowners from installing their own systems. Current regulations allow it, but we are working on getting that changed in the best interest of our industry and the environment.

Best piece of small business advice I've heard: Be a good listener and talk about what you know.

Crystal ball time – This is my outlook for the wastewater industry: Our industry in Manitoba will endure changes for some time to come. These changes will take root with the new installers coming into the industry, and in time our industry will flourish as a profession, as will our association. Technology today is amazing and can be overwhelming for some older installers if you're not practicing it every day. Today we are working with our government to make changes and then we'll implement those changes for the better. **P**

- Compiled by Betty Dageforde

MASPORT

VACUUM PUMP SYSTEMS

Get the Pump that Sets the Industry Standard!

HXL2
75 CFM
For 750 Gallon Tanks

HXL3
112 CFM
For 1000 Gallon Tanks

HXL4
165 CFM
For 1500 Gallon Tanks

HXL75
230 CFM
For 2500 Gallon Tanks

VIPER
350 CFM
For 4000 Gallon Tanks

TITAN
407 CFM
For 4000 Gallon Tanks

HYDRA
407 CFM
For 4000 Gallon Tanks

A Solution For Every Scenario!

1-800-228-4510 | cs@masportpump.com

www.MasportPump.com



Dale Miller & Sons Inc.

Fawn Grove, Pennsylvania



Check out Imperial's new **SHATTERPROOF** sighteyes!

Designed inhouse by our Engineering Team customized for the Septic and Portable industry.

This sighteye is a direct replacement for your glass sighteyes!

Seeing is believing so check out our YouTube video on the indestructible design.



Call Josh in parts
(800) 558-2945

www.Imperialind.com



Dale Miller & Sons bought a white 2019 Freightliner M2 with a 4,000-gallon aluminum tank and National Vacuum Equipment 4310 blower built out by Imperial Industries. The truck is powered by a 350 hp Cummins L9 engine tied to an Allison automatic transmission. Features include 20-inch top and rear manways, heated 4-inch inlet and 6-inch dump valves, three sight glasses, Garnet SeeLevel gauge, LED lighting, toolbox, A/C, stereo, air ride, and power windows and mirrors. Graphics are by Fast Signs. Jared Miller is the driver and the truck is used for septic, municipal and commercial pumping. **P**

SHOW US **YOUR** CLASSY TRUCK!

**Got a truck with real WOW appeal?
Show it off to *Pumper* readers!**

Send photos of your truck after it has been lettered with your company name. Any industry-related truck is acceptable. Please limit your submission to one truck only.

Your Classy Truck submission must include your name, company name, mailing address, phone number, and details about the truck, including tank size, cab/chassis information, pump information, the company that built the truck, and any other details you consider important. In particular, tell us what features of the truck help make your work life more efficient and more profitable. Email your materials to editor@pumper.com or mail to Editor, *Pumper*, P.O. Box 220, Three Lakes, WI 54562.

We look forward to hearing from you!

Su__es_fu_?

Just add **ccls**.



Maintain septics, eliminate odors and unclog plumbing successfully with CCLS.



Cape Cod Biochemical Co.
Pocasset, MA

Green Products for Septic Professionals | Since 1976

800-759-CCLS | **www.SepticOnline.com**

Easy online ordering using our new Customer Portal!

If you would like your wastewater trade association added to this list, send contact information to editor@pumper.com.

Serving the Industry

Visit your state and provincial trade associations

Alabama

Alabama Onsite Wastewater Association
www.aowainfo.org; 334-396-3434

Arizona

Arizona Onsite Wastewater Recycling Association
www.azowra.org; 928-443-0333

Arkansas

Arkansas Onsite Wastewater Association
www.arkowa.com

California

California Onsite Wastewater Association
www.cowa.org; 530-513-6658

Colorado

Colorado Professionals in Onsite Wastewater
www.cpow.net; 720-626-8989

Connecticut

Connecticut Onsite Wastewater Recycling Association
www.cowra-online.org
860-267-1057

Delaware

Delaware On-Site Wastewater Recycling Association
www.dowra.org

Florida

Florida Onsite Wastewater Association
www.fowaonsite.com
321-363-1590

Georgia

Georgia Onsite Wastewater Association
www.georgiaonsitewastewater.com
706-407-2552

Georgia F.O.G. Alliance
www.georgiafog.com

Idaho

Idaho Onsite Wastewater Association of Idaho
www.owaidaho.org; 208-664-2133

Illinois

Illinois Onsite Wastewater Professionals of Illinois
www.owpi.org

Indiana

Indiana Onsite Waste Water Professionals Association
www.iowpa.org; 317-965-1859

Iowa

Iowa Onsite Waste Water Association
www.iowwa.com; 515-225-1051

Kansas

Kansas Small Flows Association
www.ksfa.org; 913-594-1472

Kentucky

Kentucky Onsite Wastewater Association
www.kentuckyonsite.org
855-818-5692

Maine

Maine Association of Site Evaluators
www.maine.com

Maine Association of Professional Soil Scientists
www.mapss.org

Maryland

Maryland Onsite Wastewater Professionals Association
www.mowpa.org; 443-570-2029

Massachusetts

Yankee Onsite Wastewater Association
www.maowp.org; 781-939-5710

Michigan

Michigan Onsite Wastewater Recycling Association
www.mowra.org

Michigan Septic Tank Association
www.msta.biz; 989-808-8648

Minnesota

Minnesota Onsite Wastewater Association
www.mowa-mn.com
888-810-4178

Mississippi

Mississippi Pumpers Association
www.mspumpersassociation.com
601-249-2066

Missouri

Missouri Smallflows Organization
www.mosmallflows.org
417-631-4027

Nebraska

Nebraska On-site Waste Water Association
www.nowwa.org; 402-476-0162

New Hampshire

New Hampshire Association of Septage Haulers
www.nhash.com; 603-831-8670

Granite State Designers and Installers Association
www.gsdia.org; 603-228-1231

New Mexico

Professional Onsite Wastewater Reuse Association of New Mexico
www.powranm.org; 505-989-7676

New York

Long Island Liquid Waste Association, Inc.
www.lilwa.org; 631-585-0448

North Carolina

North Carolina Septic Tank Association
www.ncsta.net; 336-416-3564

North Carolina Portable Toilet Group
www.ncportabletoiletgroup.org;
252-249-1097

North Carolina Pumper Group
www.ncpumpergroup.org;
252-249-1097

Ohio

Ohio Onsite Wastewater Association
www.ohioonsite.org; 740-828-3000

Oregon

Oregon Onsite Wastewater Association
www.o2wa.org; 541-389-6692

Pennsylvania

Pennsylvania Association of Sewage Enforcement Officers
www.pa-seo.org; 717-761-8648

Pennsylvania Onsite Wastewater Recycling Association
www.powra.org

Pennsylvania Septage Management Association
www.psma.net; 717-763-7762

Tennessee

Tennessee Onsite Wastewater Association
www.tnonsite.org

Texas

Texas On-Site Wastewater Association
www.txowa.org; 409-718-0645

Education 4 Onsite Wastewater Management
www.e4owm.com; 713-774-6694

Virginia

Virginia Onsite Wastewater Recycling Association
www.vowra.org; 540-377-9830

Washington

Washington On-Site Sewage Association
www.wossa.org; 253-770-6594

Wisconsin

Wisconsin Onsite Water Recycling Association
www.wowra.com; 888-782-6815

Wisconsin Liquid Waste Carriers Association
www.wlwc.com; 888-782-6815

NATIONAL

Water Environment Federation
www.wef.org; 800-666-0206

National Onsite Wastewater Recycling Association
www.nowra.org; 800-966-2942

National Association of Wastewater Technicians
www.nawt.org; 800-236-6298

CANADA

Alberta

Alberta Onsite Wastewater Management Association
www.aowma.com; 877-489-7471

British Columbia

WCOWMA Onsite Wastewater Management of B.C.
www.wcowma-bc.com
877-489-7471

British Columbia Onsite Sewage Association
www.bcossa.org; 778-432-2120

Manitoba

Manitoba Onsite Wastewater Management Association
www.mowma.org; 877-489-7471

Onsite Wastewater Systems Installers of Manitoba, Inc.
www.owsim.com; 204-771-0455

New Brunswick

New Brunswick Association of Onsite Wastewater Professionals
www.nbaowp.ca; 506-455-5477

Nova Scotia

Waste Water Nova Scotia
www.wwns.ca; 902-246-2131

Ontario

Ontario Onsite Wastewater Association
www.oowa.org; 855-905-6692

Ontario Association of Sewage Industry Services
www.oasisontario.on.ca
877-202-0082

Saskatchewan

Saskatchewan Onsite Wastewater Management Association
www.sowma.ca; 877-489-7471

Canadian Regional

Western Canada Onsite Wastewater Management Association
www.wcowma.com; 877-489-7471



**WE OFFER ALUMINUM, STEEL & STAINLESS TANKS,
AS WELL AS BLOWER & VANE PUMP OPTIONS**

FULL PACKAGE FINANCING & LEASE OFFERS AVAILABLE

PRICES DO NOT INCLUDE TAX,
TITLE & LICENSING FEES –
SEE DEALER FOR DETAILS

Contact: Cody (715) 845-2244 ext. 4105
or codyc@midstatetruck.com
www.MidStateTruck.com

NEW



2021 Int'l MV 607
Cummins ISB, 280 HP,
Allison or 6 Spd Trans.,
2500 Gal. Alum Imperial Tank,
NVE Blower or Vane Pump



2020 Int'l HV607
Cummins LP, 370 HP
6 Spd Allison Trans.,
ASME 407/412
3200 gallon DOT Tank



2020 Int'l CV515
Int'l 6.6 V8, 350 HP,
6 Spd Allison Auto Trans.,
1700 Gal. Alum Tank,
1300 Waste/400 Water,
NVE304 Vacuum Pump



**2020 or 2021 Models
Available Int'l HV 607**
Cummins L9, 370 HP,
Allison or 10 Spd Trans.,
4000 Gal. Alum Imperial Tank,
NVE Blower or Vane Pump



2020 Isuzu NRR
NEW Isuzu NRR, 5.2L Isuzu Diesel,
Auto Trans.,
1300 Gal. Alum Tank,
900 Waste/400 Water,
Masport HXL4V Vacuum Pump



2021 Int'l HX 620
Cummins X15, 505 HP,
Allison or 6 Spd Trans.,
5000 Gal. Alum Imperial Tank,
NVE 4310 Blower

USED



'04 Mack Granite CV713
Mack AI-460, 460 HP, Air Ride Susp.,
18 Spd Manual, 435,582 Miles,
Wittig RF200 Pump, 4700 Gal. Alum Tank,
Full Lockers, Tandem-Axle



'11 Freightliner Coronado
Detroit DD15, 475 HP,
18 Spd Manual, Air-Ride Susp.,
253,165 Miles, Full Lockers
4700 Gal. Steel Tank, NVE 866 Pump



'12 Kenworth T800
Cummins ISX, 450 HP,
13 Spd Manual, Spring Susp.,
244,652 Miles, 4200 Gal. Tank,
Fruitland Pump, Full Lockers



'00 Sterling LT7501
Cat 3126, 275 HP, 8 Spd Manual,
Spring Susp., 281,244 Miles,
3600 Gal. Steel Tank,
Heated Valves, Full Lockers



'15 Int'l 4300
Cummins ISB, Spring Susp., 6 Spd Auto,
189,555 Miles, 2500 Gal. Steel Tank.
NVE 607 Air Cooled Pump



'05 Sterling Acterra
Cat C7, 7 Spd Manual,
33,000 GVWR, 342,919 Miles,
2300 Gal. Tank with Jetter



'13 Peterbilt 367
Cummins ISX, 450 HP, Air Ride Susp.,
18 Spd Manual, 226,932 Miles,
4250 Gal. Imperial Tank, Jurup LC420
Liquid Cooled Pump

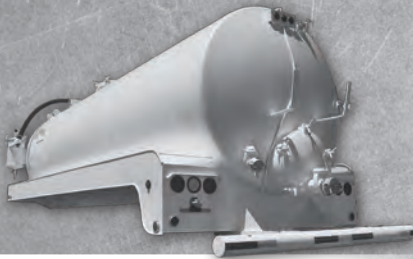
SEE WHAT'S INSIDE **Pumper**

News
Stories
Forums
Directories
Classifieds
And More

Pumper.com



TANKS TO YOUR DESIGN



TANKS SHIPPED TO YOUR LOCATION



SINGLE AXLE

BASE TANKS INCLUDE:

- 1/4" Thick Steel • Primary Shutoff
- Pipe Reinforced Baffles
- Flanged & Dished Heads
- 21" Top & Rear Hatches
- Full Length Under Carriage on Bottom of Tank

BASE TANK PRICING

2100 gal.....	\$5800	3360 gal.....	\$8140
2500 gal.....	\$6740	3570 gal.....	\$9000
3000 gal.....	\$7575	4000 gal.....	\$9920

Tanks Of Various Sizes And Stages Of Completion In Stock

PUMP DISTRIBUTOR

- ★ BATTIONI
- ★ CHALLENGER
- ★ FRUITLAND
- ★ JUROP
- ★ MASPORT
- ★ MORO
- Pump Rebuild Kits In Stock

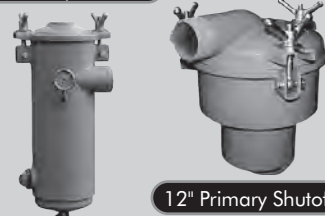
Sight Glasses, Valves & Couplings



Secondary Shutoffs



21" & 36" Manways



12" Primary Shutoffs



800.364.7307

2100 EAST BOOTH ST. • SEARCY, AR 72143
 Fax: 501.279.0003 • E-mail: sbs3647307@gmail.com



Join A National Brand
ROOTERMAN.COM

ROOTERMAN

"TO THE RESCUE"



Without Paying the National Brand Price

NEW CONCEPT: NO ROYALTY ON PERCENTAGE OF SALES

Reserve Your Exclusive Territory

Call 1-800-700-8062

FRANCHISE PACKAGE \$3,975.



Seal-R™ Sizes:
 12", 15", 18",
 24", 30",
 36", 42"

↑ RISER: Corrugated dual-wall plastic pipe.

↑ Inner safety lid.

Stock Up On Seal-R™ Lids, Safety Lids, Rings & Hinge Systems

(Hinges Available On 24"-42")

Customized Lids

Add Your Company Information

Get the Exact Size for Each Job!

Plastic riser pipe gives an exact height each time. Try our system and never have to carry concrete pipe and lids again. Save time by not having to assemble multiple sections.

- Easy 10 minute installation!
- Secure fit for all systems!
- Made & sold by septic installers!
- Prevent ground water infiltration and save money at the same time!



BrenLin Est. 1998
 COMPANY, INC. Manufacturers of Seal-R™ Products
888-606-1998 | www.seal-r.com
brenlin@frontiernet.net

Made in the USA

NEW PRODUCTS

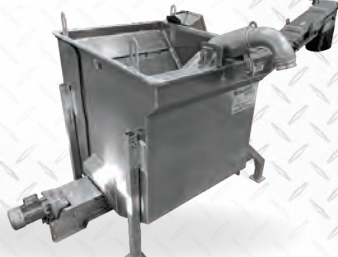
Your leader for simple innovative technology. Products built and field tested by industry professionals. Equipment that really works!

MEGA SCREEN 600 & 800 RECEIVING STATIONS



- Largest Receiving Stations On The Market Mega 800 51 Sq Ft, Mega 600 40.5 Sq Ft
- Offload At 1000-800 GPM Through Dual Fan Spreaders 4", 6" or 8" Inlet
- 3/8" Gap SS Bars Meet Ecology 503 Regs
- Use For Industrial Truck Clean-out
- Offload 2 Trucks At Once
- 7' Trash Chute Bolts On Either Side
- Septic & Grease Receiving And Lift Station Trash

NEW TRASH MASTER 400 RECEIVING STATION



Simplest Auto Screen In The Industry

- Uses Gravity To Separate Trash From Flow Screen
- 4" Power Offload From Truck 500 GPM
- Patent Pending
- 3/8" Gap SS Bars Meet Ecology 503 Regs
- Dewateres Trash - VFD 5-30 RPM
- Heavy Duty Shaftless Screw Moves Trash To Receptacle

MAXI SCREEN 400 PORTABLE SEPTIC RECEIVING STATIONS



Aluminum & Stainless Construction

- 3/8" Gap SS Bars Meet Ecology 503 Regs
- Screens That Really Work
- No Moving Parts
- Gravity Off-Load At 500 GPM
- NEW 4' Trash Extension Puts Trash Directly Into Dumpster

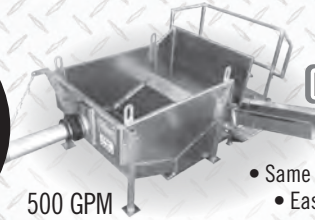
Patented Dual Screen Design

NEW MICRO SCREEN 400 PORTABLE RECEIVING STATION



- Place Over Frac Tank Or In Ground Storage Tank
- Bolts Securely To Manhole Ring
- 3/8" Gap Bars, 8 Sq Ft Screen Area
- Sealed Lockable Hinged Cover • Fast 4" Offload
- Lightweight - Portable • Small Footprint

OUR SYSTEMS MEET ECOLOGY 503S



MINI SCREEN 400 PORTABLE RECEIVING STATION

- Same Great Design, Ships Truck Freight
- Easily Fits In Pickup for Transport
- Small Footprint, Big Results

500 GPM
Patented Dual Screen Design

TRIPOD LID & PUMP LIFTER



- Saves Back Injuries
- Auto Brake Winch
- Only Weighs 28 lbs
- Heavy-duty Aluminum Construction
- Folds To Fit On Hose Deck
- Max Load 600 lbs
- Available In 4-5-6 Ft Models
- Lifts Stubborn Tapered Lids

GRIT ELIMINATOR



- Removes Grit From Flow Stream
- Keeps Onsite Storage Grit Free
- Available in 18, 32, 64, 96 Cu Ft Grit Capacity

HANDLE-TECH Hose & Pipe Handles

- Increased Productivity
- Reduces Fatigue & Injuries
- GET A GRIP
- 1.5" To 6" Sizes
- Easy One Handed Clamp For Handling Hoses & Pipes



Authorized Distributor

SHAFT DRIVE PUMPS & AGITATORS



- Move Septic And Grease Interceptor Waste With Ease From Underground Storage Tanks
- Great For Transferring To Land Application Site
- Mix While Dewatering
- Handles Sand Grit And Slurry Type Materials
- Pit Depths Of 3-12 Ft, 3333 Up To 500 GPM, 4444 Up To 1580 GPM

Patz DISTRIBUTOR

TRUCK TOW BEHIND PORTASCREEN SPREADER



- Portable Event Screening
- Doubles As Screener Spreader & Mobile Septic Receiving Station
- Clean Up Your Land Application Site
- Never Hand Pick Trash Again

SOLD

Sell your equipment in *Pumper* classifieds

Reach over 25,000 potential buyers each month when you list your equipment in the classified section. Plus, your listing is placed automatically online at the *Pumper* website. In addition, your ad will be placed in the *Pumper e-Trader*, an electronic magazine that is e-mailed to readers. That's three ways to move your equipment out of the yard!

Why wait?

Go to
pumper.com/classifieds/place_ad



Scan the code with your smartphone.

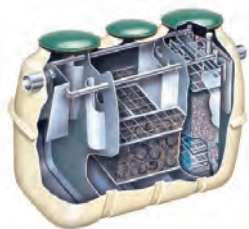
Septic Systems and Maintenance

By Craig Mandli

ADVANCED TREATMENT UNITS

Clarus Environmental Fusion

Clarus Environmental's Fusion systems are drop-in wastewater treatment units designed for decentralized applications where effluent quality must meet or exceed secondary treatment standards. They are designed for residential, commercial and small community applications and are available in 450- to 4,000-gpd treatment capacities. All models up to 800 gpd are NSF/ANSI Standard 40 certified to produce effluent quality of 9 mg/L CBOD5 and 9 mg/L TSS. The design enables installation without a pretreatment tank, making it suitable for sites with limited space. Effluent disposal options include conventional trenches, dosed systems, drip irrigation or disinfection with direct discharge. **800-928-7867; www.clarusenvironmental.com**



Delta Treatment Systems ECOPOD

The **ECOPOD** for advanced wastewater treatment from **Delta Treatment Systems** is a series of products that are easy to install, low maintenance and effective in reducing levels of nitrogen, BOD and TSS. The design is simple, can treat 500 to 1,500 gpd for residential systems, and is NSF/ANSI 40 and 245 certified. The in-

tratrak bioreactor can be inserted into an average-sized round or rectangular concrete, fiberglass or plastic onsite wastewater treatment tank or vault. It uses a fixed-film process that is stable, reliable and robust. It is customizable for individual residential installations, cluster designs and small- to medium-size commercial applications. The odorless, quiet system is FHA- and VA-acceptable and is suitable for intermittent usage. Minimum sludge production reduces pumpout frequency, and a remote monitoring system is available. **800-219-9183; www.deltatreatment.com**

Norweco Singulair R3

Norweco's Singulair R3 water reuse system reduces water consumption, reuses treated effluent and recycles water to conserve and recharge water resources. It provides a solution to chronic water shortages and reduces energy costs associated with water and wastewater treatment. The system quietly, efficiently and automatically treats all incoming wastewater to the highest level for restricted indoor and unrestricted outdoor use. It exceeds the effluent requirements of NSF/ANSI Standards 40, 245 and 350, and qualifies for Green Building credits under both the LEED rating system and the NAHB ICC 700



National Green Building Standard. By using the system and following local building code, a homeowner can expect to dramatically reduce water usage. **800-667-9326; www.norweco.com**



Orenco Systems AdvanTex AX-RT Series

The **AdvanTex AX-RT Series** of advanced wastewater treatment systems from **Orenco Systems** is designed for system repair and rehabilitation. All interior components are installed, plumbed and adjusted at the factory. Units can be shallowly buried for use between a functional, watertight septic tank and a functioning drainfield. The design includes recirculation, treatment

and discharge in a single unit to simplify installation and eliminate the need for additional tanks, basins, risers and lids. The system can be maintained with an annual service call. Filters and textile media are accessible and cleanable, and control panels are touch-safe. No blower is needed for the passively vented system. An optional UV disinfection unit is available. **800-348-9843; www.orenco.com**

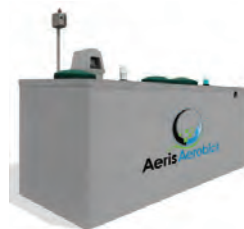
Park Process PolyCat

The **PolyCat** batch type polymer blending and injection system from **Park Process** is used for the preparation of liquid polymer to aid in the flocculation of septic tank waste sludge in the dewatering process. The batch tank method allows for the time necessary to uncoil the long chain polymer molecules, making them more effective in reacting with sludge solid particles. It is used in conjunction with standard solid separation devices, dewatering boxes, centrifuges, belt presses, filter presses, and other equipment requiring flocculation to enable dewatering. **855-511-7275; www.parkprocess.com**



Wholesale Septic Supply Aeris Aerobics D-600 NR

The **Aeris Aerobics D-600 NR** 600 gpd system distributed by **Wholesale Septic Supply** is a one-piece aerobic treatment system designed for residential applications. The system is NSF/ANSI Standard 40 and NSF/ANSI Standard 245 certified. It achieved a 7 mg/L CBOD and a 7 mg/L during the testing and reduced the total nitrogen by 65%. The test results are significantly below the Standard 40 discharge requirements and meet the stricter 10/10 discharge requirements imposed by some jurisdictions. Additionally, it meets Washington State Treatment Level B for fecal coliform without disinfection. It is manufactured with concrete, easy to install and operate, and requires low maintenance. **903-326-4800; www.aerisaerobics.com**



(continued)

LANE'S VACUUM TANK, INC.

**BUILT BY
FOR PUMPER
PUMPER**

IN-STOCK!



2020 Dodge 5500

950/300 Aluminum Tank,
Diesel, 4x2

FROM \$82,500
\$5,000 more for a 4x4



2020 Ford F-550

950/300 Aluminum Tank,
Diesel, 4x2

FROM \$82,500
\$5,000 more for a 4x4

IN-STOCK!

**HOT
SALE**



2020 International CV515

1100/400 Aluminum Tank,
Diesel, 4x2

FROM \$83,500
\$5,000 more for a 4x4

IN-STOCK!

- 6 Hauler **\$3,800**
- 10 Hauler **\$4,900**
- 12 Hauler **\$5,300**
- 14 Hauler **\$5,800**
- 16 Hauler **\$6,300**
- 18 Hauler **\$7,300**
- 20 Hauler **\$7,800**



13" Tires • 25" High

Toilet Transport Trailers



25" Off the Ground. 13" Tires.
Spare Tire. Adjustable Hitch.
3500 Pound Axles with Brakes.
I Beam Fold Up On Rear
for Handicap Units

Used trailers also for sale

SLIDE-IN UNITS & USED TRUCKS AVAILABLE / MASPORT, JUROP & CONDÉ VACUUM PUMPS

All Brands and Sizes of Aluminum & Steel Tanks and Trucks are Available



800.592.3308 • 270.527.9945

RODNEY LANE'S CELL 270.832.3793



WWW.LANESMOBILEJOHN.COM

AERATION SYSTEMS

Geomatrix Systems SoilAir

SoilAir from **Geomatrix Systems** intermittently aerates the drainfield/leachfield and surrounding soils rather than constantly aerating wastewater in a tank. This process allows rapid rejuvenation of failed septic systems, extends the life span of new leachfields and enhances treatment, according to the maker. Systems can serve single-family and multifamily homes, as well as challenging and high-strength waste streams found at restaurants, hotels, marinas, laundromats, health care facilities, grocery stores, food-processing facilities and convenience stores. **888-764-5247; www.soilair.com**



SepticTankParts.com Retro-Air

The **Retro-Air** from **SepticTankParts.com** is designed to deliver oxygen to the tank, allowing the septic field to properly absorb effluent. The unit is made to be UV resistant and operates at a low noise so it can be mounted

next to the septic tank, or right next to the house. It is designed to effectively remove biomat buildup, preventing system failure, and rejuvenating system health and efficiency. **800-778-1540; www.septic-tank-parts.com**

ALARM SYSTEMS/COMPONENTS

Septic Products Observer 400

The **Observer 400** system monitoring device from **Septic Products** is a 120-volt indoor/outdoor high-water alarm that includes a 15-foot alarm float for high levels. It includes a large 360-degree indicating light and 85 dB at 10 feet audible alarm. It comes with a test-normal-silence switch, automatic alarm reset, auxiliary contacts and 120-volt circuit power for the pump. It has easy access to the interior components for a repairable design. The alarm can be adapted for use as either a high- or low-level alarm. It is built and labeled to UL 508A. **419-282-5933; www.septicproducts.com**



SJE Rhombus Xpert Alert Wi-Fi

The **Xpert Alert Wi-Fi** indoor alarm system from **SJE Rhombus** helps protect a home from costly damage due to flooding, pump failure or freezing pipes. The system monitors and reports residential alarm condition by notifying locally (audible and visual alarms) and remotely via SMS text messages and/or emails. It uses an existing Wi-Fi or Ethernet network to send messages, meaning there are no monthly fees or contracts. The sleek design

incorporates an LED alarm light ring that illuminates red for Alarm 1 and amber for Alarm 2. The red low-temperature indicator activates at 40 degrees F to alert about potential freezing conditions, but it can be deactivated for cold climates. It is CSA certified. **888-342-5753; www.sjerrhombus.com**

EFFLUENT/SEWAGE/SUMP/AERATION/GRINDER PUMPS

Ashland Pump SW Series

The **SW40, SW50 and SW75 Series** from **Ashland Pump** are equipped with cast iron vortex impellers. The nonclogging vortex design on the fractional horsepower pumps allows better passing of materials that may get flushed (wipes, rags, etc.), while maintaining the same performance. The vortex impellers are well suited for today's waste stream, as they are low profile and resistant to clogging. The pumps have been updated to 3,450 rpm to achieve the same performance as the previous two-vane design model. **855-281-6830; www.ashlandpump.com**



Hydra-Tech Pumps S6SHR

The **S6SHR** 6-inch hydraulic submersible shredder pump from **Hydra-Tech Pumps** is designed to continuously rip and shear solids with a 360-degree shredding action. The pump's carbide-tipped impeller and hardened macerator suction plate produce a shredding action that keeps the discharge open. A guide rail assembly is available for stationary applications. Combined with HT35 to HT75 power units, it is capable of flows up to 1,000 gpm. The safe and variable-speed hydraulic drive can

be used where electric power is hazardous or impractical. **570-645-3779; www.hydra-tech.com**

Liberty Pumps ProVore

The **ProVore** grinder from **Liberty Pumps** is designed for use in applications where the addition of a bathroom or other fixtures below sewer lines requires pumping. It has the same V-Slice cutter technology used in the Omnivore series, brought down to a more cost-effective level. Powered by a 1 hp motor, this smaller grinder is designed to operate on a standard 115- or 230-volt circuit, requiring only a 20-amp breaker. No special wiring is needed. The pump comes with a 2-inch vertical-style discharge and a standard leg pattern matching the LE Series. This allows for an easy retrofit into existing systems. Compact factory-assembled systems are available in both simplex and duplex versions: the ProVore 380 and ProVore 680. **800-543-2550; www.libertypumps.com**



Polylok PL-CPE4A

The **Polylok PL-CPE4A** is a submersible, 4/10 hp, 115-volt, single-phase effluent pump with a 2-inch NPT vertical discharge. It has a maximum head of 38 feet and a maximum flow of 56 gpm. The pump is designed with a 3,450 rpm oil-filled permanent split-capacitor motor and has an amp rating of 6.6 for 115 volts, a rugged cast iron housing and volute equipped with a cast iron vortex impeller capable of passing 3/4-inch-diameter solids. The stainless steel shaft is supported

(continued)

Merry
Christmas
& Happy New Year!



We're so grateful for all of you and want
to wish you a healthy & prosperous 2021!

800.338.3155 | www.walex.com | info@walex.com



by two single-row, oil-lubricated ball bearings. The shaft seal is an inboard design with a secondary Exclusion V seal. It has a 20-foot UL/CSA-listed power cable suitable for submersible service and fitted with a three-prong plug. The unit is supplied with an integrated clip for the included piggyback mechanical float switch and used for automatic operation. **888-765-9565; www.polylok.com**

FILTERS



Anua BioCoir

The **BioCoir** recirculating media biofilter from **Anua** is designed to be simple to install and easy to operate. It provides stable treatment across a broad range of applications, with no constantly running, noisy blowers or motors, according to the maker. It uses a coconut coir media housed in a preassembled pod. Coir refers to the fibers that make up the thick husk of a coconut. The coconut fiber is low cost, an upcycled resource and high in lignin content, which results in a durable material. Pretreated effluent is time-dosed over the media using helical spray nozzles to provide uniform distribution. Treatment is optimized by recirculating effluent through the media multiple times. It is certified to NSF/ANSI Standard 40, Class I and third-party tested to reduce nitrogen by more than 50%. Residential and commercial configurations are available. **336-547-9338; www.anuainternational.com**

BioMicrobics SaniTEE

SaniTEE nonlog effluent screens from **BioMicrobics** deflect solids back into a tank, while simultaneously attenuating surge flow. They drop in a standard 4-inch septic tank (for new builds or retrofitted) outlet tee. They are easily cleaned with a clean-in-place swab handle with a Buna-N disk fastened to the shaft. To clean, move the swab handle up and down to pass the swab through the center several times to act as a reverse pump to dislodge debris in the filter or angled slots. No removal or running water is necessary. Solids touching the vertical surface of the screen tend to slough off and fall back into the septic tank, making it somewhat self-cleaning. In general, the 4-, 8- and 16-inch screen should be for use on conventional and advanced septic systems, and is suitable for all types of commercial high-strength wastewater treatment systems. **800-753-3278; www.biomicrobics.com**



SeptiTech STAAR filter systems

SeptiTech STAAR (Smart Trickling Anaerobic/Aerobic Recirculating) filter systems are designed for residential and commercial properties with minimal operator oversight, while delivering consistent treatment during peak, low or intermittent flows. Using an unsaturated, engineered textile media to treat wastewater that meets strict permit limits, the commer-

cial filter system provides a simple, automatic equalization and clarification process for 500- to more than 150,000-gpd flows. The biological trickling filter technology also maintains low levels of Nitrate-N, with all below-grade components that fit in watertight concrete, plastic or fiberglass tanks. Smart technology allows the system to go into a sleep mode to achieve lower operating costs and power requirements. Systems are ETV-EPA verified and NSF/ANSI Standard 40/245 certified. **800-753-3278; www.septitech.com**



Sim/Tech Filter STF-100A2

The **STF-100A2** pressure filter from **Sim/Tech Filter** helps maintain proper and efficient year-round operation of mounds, sand filters and other pressurized distribution systems. The low head-loss (0.21 psi) pressure filter mounts on the discharge side of an effluent pump, acting as a last line of defense to prevent plugged holes and reduce effluent TSS. This mounting location also extends the time between servicing. The vortex action created by the pump scrubs the screen and the backflow through the filter after the pump shuts off, washing debris out. A single 2-inch filter can handle flow rates up to 83.8 gpm. It can be designed to handle almost any flow rate or load. Larger 3- and 4-inch filters are available. The standard screen filters to 1/16 inch, and optional socks allow for additional filtration to 0.024, 0.007 or 0.004 inch. **888-999-3290; www.simtechfilter.com**

INSPECTION EQUIPMENT

CUES MPlus+ XL

The **CUES MPlus+ XL** push system is designed for easy operation and flexibility with an all-in-one setup and quick removal of the control unit, which can be used separately. It includes a coiler configuration and pan-and-tilt camera for mainline and larger pipeline applications up to 500 feet. It integrates video observation coding, observation coding interface and digital recording. The lightweight system includes large, durable wheels for portability and a balanced footprint for stability. It is manufactured to handle rigorous field use. **800-327-7791; www.cuesinc.com**



Ratech Electronics Plumber's Helper Jr.

The **Plumber's Helper Jr.** pipe inspection system from **Ratech Electronics** is based on a small-scale reel and comes with 100 feet of mini Gel Rod cable, a removable compact command module with 7.1-inch LCD, a built-in battery and an SD recorder for recording digital images and video. This mini pipe inspection system is available with a full-spectrum, 1.375-inch, self-leveling color camera; a standard color camera; or any of the company's three micro camera heads — 5/8-, 3/4- or 1-inch diameter. **905-660-7072; www.ratech-electronics.com**

(continued)

Sell Pro-Pump and Make More \$\$\$!

PRO-PUMP

ASK ABOUT
CURRENT
SPECIALS!

Make the most with Pro-Pump Products:

\$\$\$ Sell Pro-Pump® products to your customers as an option for septic remediation and for maintenance between your visits.



A Green
Product Your
Customers Love

Made in the USA



Septic System Treatment • Bio-remediation Kits
Aerobic System Treatment • Absorption System Recovery
Odor Control • Solids Reduction • Drain & Grease Traps

Call Us Toll Free at 1-800-326-7867

Solving Problems, Naturally!
Ecological Laboratories INC. www.propump.com
info@propump.com

Roth
MULTITANK

**Septic Tanks • Water Cisterns
Pump Tanks • Holding Tanks
Rain Water Harvesting**

Multi Usage Multi Layer Multi Coverage

- Inner layer of FDA approved virgin HDPE, two inside layers of PE for improved stability, plus one outer layer of black and UV-stabilized PE
- Lifetime* corrosion protection and 5 years of labor insurance
- Strongest & heaviest poly tank on the market
- No water for backfilling required
- Low profile
- 100% watertight

Our multi-layered tank construction, consisting of virgin material surrounded by 3 layers of protection.



BEST TANK. BEST WARRANTY. BEST SYSTEM.

Roth Global Plastics
www.roth-america.com 866-943-7256

*see warranty for details

Marsh
INDUSTRIAL

Merry Christmas

P.O. Box 1107 - 135 E Mile Road - Kalkaska, MI 49646
p: 231.258.4870 - f: 231.258.2019 - sales@marshind.com

800.952.1537 - WWW.MARSHIND.COM

Vacuum Septic Units

Aluminum Or
Steel Tanks
In A Variety
Of Capacities



Portable Toilet Units

Portable Toilet
Restroom
Service
Units



DOT Industrial Vacuum Units

DOT Code &
Non-Code
Hoist &
Rear Door
Options



Slide-In Units

Various Sizes Available



Mini Vac Trailers

Industrial Units
DOT Code & Non Code



Quality People Doing Quality Work

Join us on Facebook See the progress of some of our units in the making.
Check out our website for more information: www.marshind.com

Subsite Electronics lateral and mainline inspection system



The lateral and mainline inspection system from **Subsite Electronics** is a fully integrated single-conductor technology lateral launch system and performs mainline and lateral pipeline inspections simultaneously. This second-generation system uses picture-in-picture or dual video monitors and can inspect mainlines up to 500 feet and laterals of up to 200 feet. It can be used to inspect mainlines from 6 to 24 inches and lateral lines from 4 to 8 inches in diameter. It has a 40-1 zoom, pan-and-rotate mainline camera with auto iris and autofocus, a color rear-view camera, tilt connector for easy deployment, and a high-resolution RodStar lateral camera. It offers a dual video monitor view format that lets the user view the mainline and lateral simultaneously. The six-wheel-drive tractor has three forward speeds, reverse and freewheel. **800-846-2713; www.subsite.com**

JETTERS



Easy Kleen Pressure Systems Groundhog Jetter

The **Groundhog Jetter** from **Easy Kleen Pressure Systems** is designed to blast through clogged pipes with a 35 hp Vanguard engine providing 12 gpm at 3,500 psi. It is compact and can be transported in a pickup truck or van, with trailer options available. It includes a fully welded,

powder-coated, 2-inch steel tube frame, drilled and tapped, which houses the 200-gallon water tank. It comes with an accessible breather and 10-gallon fuel tank, General Pump with gearbox drive, 12-volt-powered hose reel with 300 feet of 3/8-inch jetter hose, hose guides, a super swivel and foot-pedal control, emergency shut-off valve and hour meter. Optional remote features include hose reel-in, motor off/speed control and pressure on/off. **800-315-5533; www.easykleen.com**

General Pipe Cleaners JM-1000 Mini-Jet



The **JM-1000 Mini-Jet** from **General Pipe Cleaners** includes a high-performance, stainless steel braid jet hose for drain cleaning power and performance in a small package. The stainless steel braid/Teflon core hoses are available in a variety of lengths and are also optimized for the JM-1450 electric jet. The Mini-Jet can clear grease, sand and ice from small lines, sinks and laundry drains with 1,500 psi, high-pressure water spray. Its diamond-plate metal case safely shields the pump and motor assembly from job site abuse. The hose smoothly slides the jet nozzle down 1 1/2- to 3-inch drainlines, navigating tight bends. The 3/16-inch Teflon core also reduces flow resistance, improving small-line cleaning power. The package includes a four-piece nozzle set, water supply hose, shut-off valve and universal faucet adapter. **800-245-6200; www.drainbrain.com**

MyTana Economic skid-mounted jetter



MyTana's compact **Economic** skid-mounted jetter fits in medium-duty commercial vehicles. Suitable for unblocking and cleaning lines up to 24 inches or surface cleaning, the unit delivers cleaning pressure up to 3,000 psi and water flow up to 26 gpm. A hydraulic hose reel swivels 225 degrees and holds 400 feet of 1/2-inch hose. There are two engine options — 33 or 58 hp. The Economic is one of six customizable models of compact skid- and truck-mounted high-pressure jetting and jet/vac units offered. It is built by ROM. **800-328-8170; www.mytana.com**

LID



BrenLin Seal-R

Seal-R septic tank lids from **BrenLin** create a strong seal between the septic tank and the riser, eliminating water infiltration between the tank and riser. They are made of durable materials, range from 12 to 42 inches and can be personalized with a service provider's company information. The 42-inch lid meets growing demand for bigger risers to accommodate new technology. **888-606-1998; www.seal-r.com**

LOCATORS

Superior Signal 5E Electric Smoker



The **5E Electric Smoker** from **Superior Signal** offers a cost-effective and green solution to find difficult leaks and odors in residential and commercial plumbing systems. Connect the blower to any plumbing clean-out or vent, with the appropriate-size smoke candle to force smoke through faults and cracks, easily identifying sources of odor and hard-to-find leaks. Smoke candles produce a highly visible, non-toxic smoke and are biodegradable. They are manufactured with zero-waste stream and include labels printed with vegetable-based ink on recycled paper, as well as biodegradable, recycled paperboard tubes. The unit does not generate harmful exhaust gases and handles all residential and commercial smoke testing applications. Smoke tests take minutes to perform and see immediate results. The unit comes with an 8-foot, industrial-grade flex hose, weighs 8 pounds and requires no maintenance. **800-945-8378; www.superiorsignal.com**

Vivax-Metrotech vLoc3-Cam



The **vLoc3-Cam** sonde locator from **Vivax-Metrotech** includes advanced filtering and omnidirectional antenna technology that makes sonde locating fast, easy and accurate. The bright full-color graphic display directs the user to the sonde with directional arrows. When

(continued)

BEST ENTERPRISES, INC.

Building quality Stainless Steel Tanks since 1978

*Merry Christmas and
Happy Holidays to All*



Why be in the back,
when you can lead the pack like Rudolph
with a **Stainless Steel** tank built by Best!

Did You Know?

To the best of our knowledge & research, all STAINLESS STEEL tanks, manufactured by BEST ENTERPRISES, since 1978 are still in operation. Therefore, Best Enterprises believes that vacuum tanks, built with our quality "STAINLESS STEEL" is a smart investment for your company.

All 304 Stainless Steel

Best provides a full line
of vacuum pumps and replacement parts to serve you.

Orders received by 2:00 Central Time will ship same day



Follow Us On   



Best Enterprises, Inc.

Located in Cabot, Arkansas

501-988-1905 800-288-2378

www.bestenterprises.net

PRODUCT FOCUS

on top of the sonde, confirmation is provided with a large sonde icon and depth reading. The Pushrod Trace mode shows a second display for tracing the path of the pushrod deployed in the pipe or tracing utilities with an optional portable transmitter. Passive locate modes of Power and Radio will detect the presence of live power lines, CATV, telephone and metallic pipes that radiate 60 Hz from nearby or overhead power lines. **800-446-3392; www.vivax-metrotech.com**

PRESSURE WASHER AND SPRAYER

Cam Spray MCB3040

The MCB3040 skid-mount hot water pressure washer from **Cam Spray** is designed to be moved easily from truck to van to trailer. It offers 4 gpm at 3,000 psi from a Honda GX390 industrial gas engine and triplex plunger pump with ceramic plungers and stainless steel valves. It is equipped with low-pressure chemical injection and is protected by an unloader valve and secondary pressure pop off. The burner system includes a rust-free fuel tank, schedule 80 coil with stainless steel wrap, is controlled by an adjustable thermostat and temperature limit switch for a maximum temperature of 195 degrees F. The frame is industrial-coated 2-inch tubing and comes equipped with a wand/hose rack. A heavy-duty trigger gun with a dual wand with side handle valve allows the user to switch from high pressure cleaning to detergent application and is equipped with quick change 0-, 15-, 25- and 40-degree nozzles. **800-648-5011; www.camspray.com**



RISER



TUF-TITE tank risers

Tank risers from **TUF-TITE** have internal supports or ledges to reinforce internal plastic safety lids. The ledges will strengthen the company's plastic internal safety lids or a variety of internal safety devices made by others, such as concrete, fiberglass or rope netting. The riser lids come with the necessary mounting hardware, including safety screws. **800-382-7009; www.tuf-tite.com**

SEPTIC SYSTEM BACTERIA

Bionetix International Eco-Sept

Eco-Sept pouches from **Bionetix International** contain pink, granular powder with a high concentration of beneficial bacteria (28 billion per pouch), enzymes, biological nutrients and stimulants designed to improve the microbial action of a septic system. When added to a septic tank, they reduce the frequency of pumping by degrading paper, grease, vegetable waste and other organic wastes quickly, according to the manufacturer. This helps keep sewer lines



open, prevents drain blockage and backups, extends life of leachfield lines and reduces foul odors, the maker says. It is safe to use and will not damage pipes or fittings. It comes in 1-ounce water-soluble pouches, 400 per pail. For 500- to 800-gallon tanks, the initial dose is one pouch per day for four days, followed by a one-pouch-per-month maintenance dose. For tanks of 1,000 to 2,500 gallons, the initial dose is two pouches per day for four days with a maintenance dose of two pouches per month. **514-457-2914; www.bionetix-international.com**

Cape Cod Biochemical CCLS

CCLS from **Cape Cod Biochemical** was originally formulated for municipal waste treatment facilities, and the technology has been miniaturized for onsite septic systems. According to the manufacturer, it provides the same primary treatment required by treatment plants including BOD and COD removal, solids settling, solids digestion and odor control. **800-343-8007; www.septiconline.com**



Century Chemical Bio-Tab

Bio-Tab from **Century Chemical** sinks to the bottom of a septic tank where buildup problems begin. Its time-release technology is designed to gradually dissolve and create a growing area of activity at the bottom of the tank. There, self-reproducing bacteria and enzymes quickly grow as they digest and liquefy the organic waste. The tablet establishes itself by working from the inside out. Regular use, combined with routine pumping, is designed to help maintain a septic system in good working condition while also helping maintain the proper level of bacterial action and reducing odors and gases. **800-348-3505; www.bio-tab.com**

Ecological Laboratories PRO-PUMP/HC

PRO-PUMP/HC liquid live bacteria from **Ecological Laboratories** are a blend of microorganisms selected for broad-spectrum application in industrial and wastewater treatment. It contains over 30 strains of bacteria to resolve problems that occur in septic systems. Its performance results in the rapid breakdown and removal of fats, oils and greases that build up in septic tanks and absorption fields, according to the maker. It is a consortium of vegetative non-spore-forming bacteria formulated to exhibit exceptional performance in low-oxygen facultative anaerobic environments. Regular treatment can help reduce surface solids, bottom solids and odor. **800-326-7867; www.propump.com**





PATENTED

FUEL PRICES GOING UP?

Why Run 2 Trucks When You Can Run 1



Smaller frame trucks allow PRO's to get closer to units for service

Services 50-70 units on a service route.
Eliminates P&D routes. Reduces labor cost, fuel and wear & tear.

Why Buy 2 Trucks when **1 TRUCK** Does It **ALL**



585-484-7009 | sales@portalogix.com
PortaLogix.com

FORGET BACKFLUSHING

SAVE TIME AND MONEY!

Through the use of engineered blades and high-power rotation the Crust Buster creates a "lifting" agitation within your tank.

Now buy all your Crust Buster products online!
www.crustbusters.com

CRUST BUSTERS

Local Phone - 763-878-2296

888.878.2296



DAVIDSON TANK
Bakersfield, California



- Septic/Grease/Industrial Waste
- 400-5,000 Gallon
- Aluminum/Steel/Stainless

Our Chassis Or Yours • Built To Specs



- Portable Restroom Service Trucks
- Aluminum/Steel/Stainless

661.325.2145 • www.DavidsonTank.com

J&J Portable Sanitation Products NuTank

NuTank septic system treatment from **J&J Portable Sanitation Products** is designed to replenish the enzymes in a septic tank. With high concentrations of billions of specific bacteria, it is engineered to break down solids, scum and sludge for a healthier septic system. Monthly usage can help reduce the potential for backup and costly repairs such as drainfield damage, according to the maker. It can help boost the progression of bacterial decomposition to help keep the septic tank and drainfield functioning, even battling harsh detergents and antibacterial products. Once a month, toss one dissolving packet into a drain or toilet and wash or flush down. It is environmentally friendly and safe for all plumbing. It comes prepackaged in 12 packets per jar and 12 jars per case. Company contact information can be added to each jar. **800-345-3303; www.jjchem.com**



Walex Products Bio-Active Septic Tank Treatment

Bio-Active Septic Tank Treatment from **Walex Products** can help reduce solids and restore the population of worker bacteria and enzymes, helping keep septic systems healthy between recommended tank pumping, according to the maker. Monthly application involves flushing one packet down the toilet. It is safe for all plumbing and helps prevent backups and dissolves solids. Each bag contains a one-year supply. **800-338-3155; www.walex.com**



SEPTIC SYSTEM CHEMICALS

Arcan Enterprises Septic-Scrub

Septic-Scrub chemical additive from **Arcan Enterprises** is designed to help remove sludge that builds up and sticks to the stone in a drainfield, pit or sand mound to rejuvenate the drainfield. According to the maker, it works in the first 24 hours after application. It can serve as part of a maintenance program. It works with all types of systems, is safe to handle and is environmentally friendly. **888-352-7226; www.arcan.com**



Lenzyme enzyme-bacteria product

Lenzyme is an enzyme-bacteria product used as a septic biological maintainer, drain cleaner and sewage treating agent in the home and in industrial, commercial and municipal installations. It can be packaged in the existing brand name



or private labeled. It may also be used in formulations designed for a given condition or application. Various formulas have been developed for use in drains, septic tanks and cesspools, and for industrial and commercial application. It is approved by the USDA for use in sewage and/or drainlines of official establishments operating under the federal meat, poultry and egg products inspection program and is only sold to licensed contractors. **800-223-3083; www.lenzyme.com**

RootX



RootX is designed to reduce the need for mechanical root control. Every component of a septic system can be treated with the chemical without the risk of machine failure or pipe damage to fight root intrusion. The mainline can be treated easily and effectively from a toilet or clean-out. Roots often penetrate tank, lid and riser seams, as well as baffle entries and exits. The chemical can be applied to

the drainfield through a clean-out, distribution box or pressure system with special instructions. **800-844-4974; www.rootx.com**

Surco Portable Sanitation Products Enz-O-Matic

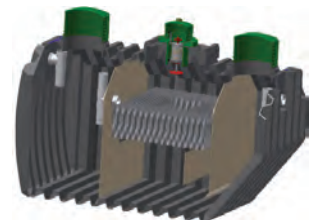
The **Enz-O-Matic** biological organic waste degrader and odor eliminator from **Surco Portable Sanitation Products** includes a high concentration of non-pathogenic, live bacteria cultures designed to rapidly degrade organic wastes with a blend of surfactants and odor counteractant fragrance. It is nonpolluting, contains no acids or toxins, and is certified Salmonella-free. It contains over 200 billion live bacteria cultures per gallon, according to the manufacturer. The bacteria count doubles every 20 to 30 minutes to provide continuous enzyme production. Enzymes digest and liquefy grease, blood, urine, vomit, feces, sewage and other organic substances, neutralizing odors on contact. It can be used for drainlines, septic tanks and septic spills. **412-789-8683; www.surco.com**



SEPTIC TANK - POLY, FIBERGLASS, CONCRETE

Jet Inc. J-500-800PLT

The **J-500-800PLT** plastic tank from **Jet Inc.** offers a lightweight alternative to concrete J-1500 Series BAT Media Plants. Treatment capacity is variable from 500 to 800 gpd. They are rotational molded using lightweight polyethylene for a seamless tank with maximum strength and durability. They are easy to transport and install in difficult site conditions. **800-321-6960; www.jetincorp.com**





Pressure Washers & Drain Jetting Equipment

STB2712H



Van Mount Cold Water Jetter

VM4007H • 7 gpm @ 4000 psi
 • 400' x 3/8" hose on DC Reel
\$8,995 • 690cc Honda

VM2712H • 12 gpm @ 2700 psi
 • 400' x 1/2" hose on DC Reel
\$9,599 • 690cc Honda

Hot Water Cargo Van Jetter

CV4007H-HOT • 7 gpm @ 4000 psi
 • 400' x 3/8" hose on DC Reel
\$15,299 • 690cc Honda

CV2712H-HOT • 12 gpm @ 2700 psi
 • 400' x 1/2" hose on DC Reel
\$15,995 • 690cc Honda

Trailer Models

STB2712H • 12 gpm @ 2700 psi
\$15,099 • 400' x 1/2" hose on DC Reel
 • 690cc Honda

STB4012K-P00163 • 12 gpm @ 4000 psi
\$21,429 • 400' x 1/2" hose on DC Reel
 • 999cc Kohler

TT4 Series • 18 gpm @ 4000 psi
\$44,500 • 500' x 1/2" hose/hydraulic reel
 • 74 hp turbo intercooled HATZ Diesel



VM4007H



TT4 Series



CV4007H-Hot

**We Custom Build
 Machines To
 Your Specifications!**

Kohler powered models available, call for pricing 800-648-5011
 Looking for smaller or larger models? See all the jetting equipment at www.camspray.com

800-648-5011 | www.camspray.com | sales@camspray.com

PRODUCT FOCUS

SEPTIC TANK AGITATOR

Crust Busters agitator

The handheld power agitator from **Crust Busters** has an 80-inch shaft and two- or three-blade propeller designed to mix a 1,000-gallon septic tank in five minutes. Options include 2-, 4-, 6- and 9-foot extensions and a short three-blade shaft that adapts to the two-blade unit. 763-878-2296; www.crustbusters.com



UV DISINFECTION EQUIPMENT

SALCOR 3G UV Wastewater Disinfection Unit

The **3G UV Wastewater Disinfection Unit** from **SALCOR** is used for residential, commercial and municipal applications, and it is UL-certified NEMA 6P flood-proof and NSF/Washington State Protocol six-month tested (with 21 upstream treatment systems). It inactivates bacteria/virus pathogens, including superbugs. Rated at 9,000-gpd gravity flow, it is meant as a reliable building block for large water recovery/reuse systems. When installed in 12-unit parallel/series arrays with ABS pipe fittings, systems can disinfect more than 100,000 gpd. Gravity flow equalizes without distribution boxes. Each unit has a foul-resistant Teflon lamp covering, two-year long-life lamp with efficient installation, minimal annual maintenance and energy use of less than 40 watts. 760-731-0745; www.salcor.world P



ATC
 American Tank Co.

SEPTIC TRUCKS
 PORTABLE RESTROOM TRUCKS
 SLIDE IN UNITS

Backed By a History of Reliable Service, Innovation & Care

TRUCKS BUILT FOR DEMANDING JOBS JUST LIKE YOURS



Look to us for the toughest septic trucks, portable restroom trucks and slide-in units. Crafting any truck to your needs.

- Specialized & Customized Septic Trucks
- Portable Restroom Trucks Built for Your Specific Needs
- Slide In Units: Affordable Back-up or Starter Tanks That Are Tough & Compact

CONTACT TIM COUNTS 254-721-5675 or BRUCE CURRY 254-760-1514
www.atcvacuumtruck.com

We Have Money To Loan



Conserve your working capital. Keep existing credit lines intact, and enjoy the security of knowing financing is there when you need it. We offer loan and leasing plans tailored to individual needs.

NEW AND USED WASTEWATER EQUIPMENT

- ❖ Programs offer longer terms for older equipment
- ❖ We do start ups
- ❖ Seasonal Payment Programs Available

**JIM THOMAS
SINCE 1997**

GIVE ME A CALL!

100% FINANCING. NO DOWN PAYMENT.
If you are having difficulty getting the Credit you need call Jim Thomas.

Toll-Free 877-333-4539 • JimThomas@KeyCommercial.com



Take control of your routes! with Summit Route Management™

- Single-click route optimizing
- Unlimited customers, job sites, and routes . . . \$31/month
- Take it mobile:
iPad or iPhone app . . . \$9/month
- Need more?



Add billing, customer accounting, and more with the Summit Rental System™ or Summit Service System™

Since 1981, and growing stronger!

Route Management | Dispatching | Mobility | Proof of Service
Service Reminders | Billing/Receivables | Inventory Control

Portable Restrooms | Roll-Offs | Temporary Fencing
Septic | Grease | Drains | Plumbing | Others

Ritam Technologies, LLC
USA/Canada 800-662-8471 Int'l 925-478-2732
info@ritam.com www.ritam.com

Watch demos OR call
for a live demo



CASE STUDIES

Septic Systems and Maintenance

By Craig Mandli

CASE STUDY

Sand filtration system a fit for property with shallow water table

Problem: An owner in North Smithfield, Rhode Island, needed to replace a cesspool for a two-bedroom home so the property would pass a time-of-sale inspection. The property had a shallow water table, and all setbacks had to be met for a code-compliant system. The builder wanted the system to be installed below grade so it wouldn't detract from the curb appeal.

Solution: D.H. Keene Septic designed the system and chose Eljen GSF (Geotextile Sand Filter) B43 modules for the drainfield because of the reduction in footprint size and shallow profile compared to a traditional system. The 80-foot-long by 4-foot-wide trench was placed within the setbacks of the property line and well by Matt Osborne and Dan Marcotte from Ken's Excavating. A tipping distribution box delivers effluent to the 18 GSF modules from new 1,000-gallon septic tank.

Result: The home has a code-compliant system installed quickly so the property could be sold. The GSF system was installed in a smaller footprint than a stone-and-pipe system but requires the same maintenance. **800-444-1359; www.eljen.com.**



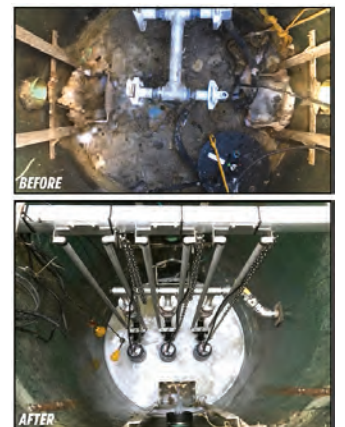
CASE STUDY

Grinder pumps used to keep sewer pump system clear

Problem: At least once a month, residents of a New Jersey townhome complex saw a familiar sight: a septic truck unblocking their sewer pump system and cleaning out the well. The multifamily complex utilized a four-pump system originally engineered for single-family homes, and it was seriously underperforming with a limited pumping capacity of 11 gpm. This caused rags and solids to accumulate in the basin, and frequent vacuum truck visits to keep the system operational.

Solution: With the cost of emergency repairs and quarterly maintenance adding up, the facility turned to Franklin Electric's FPS IGP Series grinder pumps. Designed as a direct replacement for small-horsepower progressive cavity and other centrifugal grinder systems, the 2 hp pumps could easily tackle larger jobs. With a maximum flow rate of up to 33 gpm, the quadplex system was simplified to a triplex. These pumps were also designed for retrofit applications, allowing the owner to keep the existing basin and modify the controls. In addition, the pumps were installed on a guiderail. When routine maintenance is required, service techs can easily slide the pumps out of the well, streamlining pump cleaning.

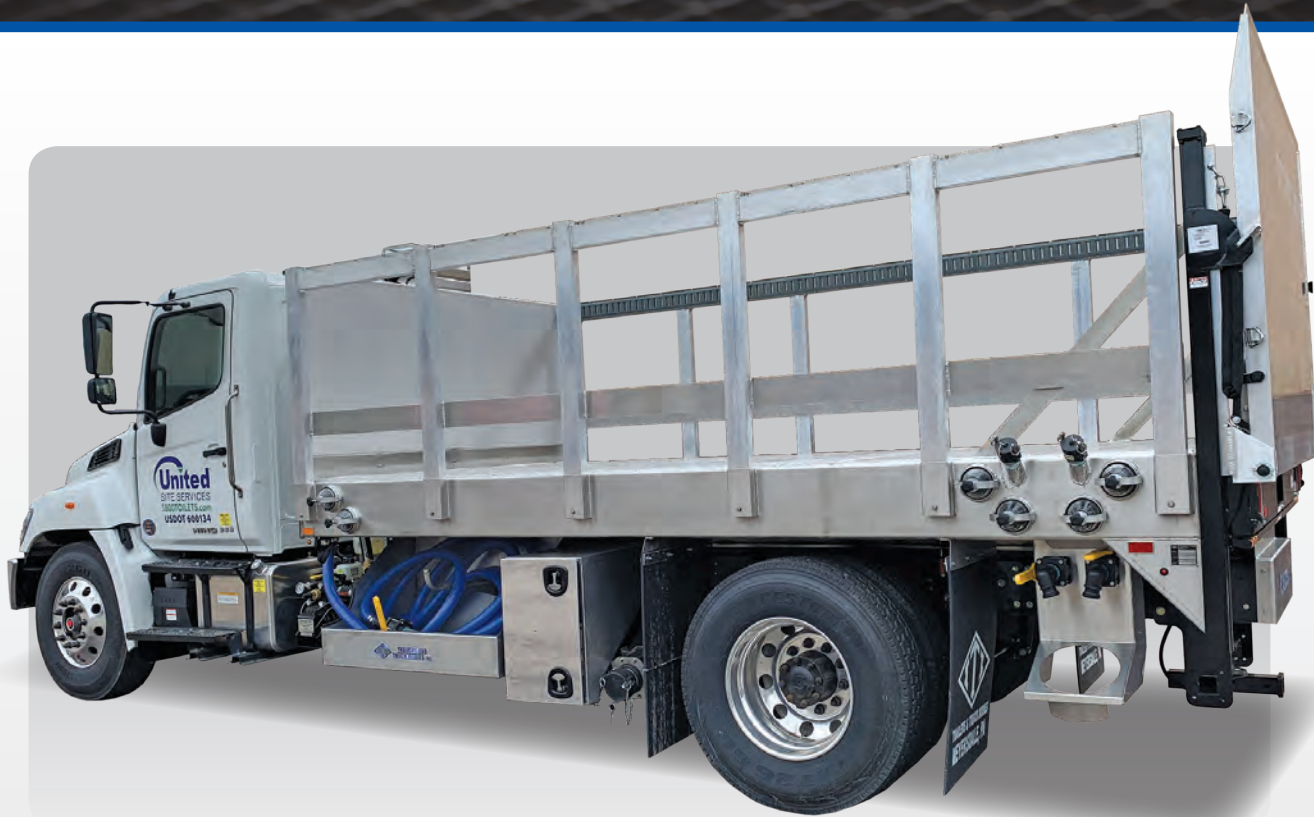
Result: Installed in 2018, the system has never clogged, eliminating monthly septic truck visits and maintenance and emergency repair costs. **800-348-2420; www.franklinengineered.com. P**





**TRAILERS AND
TRUCK BODIES**
INCORPORATED

**Custom Manufacturer of
Vacuum Trucks & Trailers**



5500 Gallon Stainless Steel Tank ◊ NVE 4307 Blower



5000 Gallon Carbon Steel Tank ◊ 607 NVE Pump

**We
Manufacture
& Service
What
We Sell.**

ASME Certified

Building DOT 407/412 Equipment



Stainless Vacuum
Trucks & Trailers



Grease Trap
Pumper Trucks



DOT 407 - 412
Cargo Tank Trailers



Portable
Restroom Trucks



Aluminum Vacuum
Trucks & Trailers



Carbon Steel Vacuum
Trucks & Trailers

To learn more about
ITI Trailers and Truck Bodies,
call **1-888-634-0080**
or visit
www.itimg.com

COMPANIES NEED *Fresh Content* TO STAY RELEVANT... LOTS OF IT.

Trying to handle all of that on your own can be daunting.

That's why you need COLE Media.

Useful, organized, cross-platform content is the key to a successful marketing strategy. Our content generation team specializes in custom-built, affordable solutions exclusively tailored to fit your needs.

Digital & Print Media

- » Website content «
- » Blog posts & customer education materials «
- » Press materials - products, industry, personnel «
- » Social media management & marketing «
- » Email marketing «
- » Hired professional photography & videography «

Creative Content

- » Logo & business card design «
- » Outside creative (advertisements, billboards, digital) «
- » Catalogs & brochures «
- » Video editing «


COLEmedia

800.257.7222

www.cole-media.com | info@cole-media.com

THE RTX SERIES

RTX 30 • RTX 50 • RTX 70 • RTX 85 • RTX 100

THE FUTURE OF INDUSTRIAL PUMPS BROUGHT TO YOU BY



RTX 30	Max GPM.	Max. LMP	Max. PSI	Max. Bar	Max. RPM	Req. HP
	8.0	30.3	4350	300	1450	24.3

Max GPM.	Max. LMP	Max. PSI	Max. Bar	Max. RPM	Req. HP	RTX 30.500N
8.0	30.3	7250	500	1450	24.3	

RTX 50	Max GPM.	Max. LMP	Max. PSI	Max. Bar	Max. RPM	Req. HP
	12.0	45.4	4350	300	1450	27.2

Max GPM.	Max. LMP	Max. PSI	Max. Bar	Max. RPM	Req. HP	RTX 60
14.0	53.0	4350	300	1450	47.2	

RTX 70	Max GPM.	Max. LMP	Max. PSI	Max. Bar	Max. RPM	Req. HP
	17.0	64.4	3000	200	1450	25.4

Max GPM.	Max. LMP	Max. PSI	Max. Bar	Max. RPM	Req. HP	RTX 85
21.0	85.0	3000	200	1450	34.0	

RTX 100	Max GPM.	Max. LMP	Max. PSI	Max. Bar	Max. RPM	Req. HP
	24.0	90.8	1800	124	1450	27.2

For
More
Information
Contact

Thom Calvin
(763) 398-7564
thomasc@arnorthamerica.com

Randy Rowan
(763) 398-2008 Ext:296
randyr@arnorthamerica.com



**Aluminum
Stainless Steel**

FD-950 shown (650/300)

Quick Mount to your:
Pickup Truck Flat Bed Truck
Roll Off Truck Trailer

**Write off up to
\$1,000,000 in 2020 for
qualifying equipment**

Take advantage of the
Section 179 or 168(k)

Visit www.section179.com today for more details.

888-445-4892
www.slideinwarehouse.com



in the
SPOTLIGHT
By Craig Mandli

**LOCATOR ADDS
GPS POSITIONING
FOR ADDED CREW
EFFICIENCY**

The UtiliGuard 2, a multifrequency utility locator from Subsite Electronics, is available in standard and advanced models, UtiliGuard 2 takes all the proven performance-boosting features of the company's original UtiliGuard, and adds several capabilities including a new user interface, integrated data capture, and GPS positioning.

The user interface was designed with industry specialists and trainers to feature simplified graphics that are easier and faster to interpret. Operators will notice an obvious change in screen layout when directly over a utility locate, providing positive confirmation. The combination of screen graphics delivers increased operator confidence, locate consistency and operational performance.

"UtiliGuard 2 actually gives you a signal strength percentage, which helps you pinpoint utility depth and type," says Chris Thompson, product manager for Subsite Electronics. "It has the capability of locating two separate utilities at once, which is going to save not only time, but also money in the long run."

In addition to data-logging capabilities, the UtiliGuard 2 introduces integrated GPS positioning to the product line. This addition offers improved activity reporting.

"The GPS positioning feature adds to the overall accuracy of the tool, and the user's efficiency," says Thompson. "Integrated GPS provides oversight of field activity to improve work quality, accuracy and reliability of locate activities; ensure compliance with the company's standard operating procedures and performance expectations; and enable the creation of initiatives that can decrease utility strikes and increase overall productivity."

Like the original, the UtiliGuard 2 advanced model offers Ambient Interference Measurement technology that automatically recommends the best signal frequency. It also offers a 5- or 12-watt transmitter that drives signals farther down large, direct-buried utilities. The system also provides both the horizontal and vertical distance (depth) to the utility to enable users to make accurate locates of obstructed utilities.

"Basically it comes down to companies wanting more confidence in their locates," says Thompson. "We're giving owners a clear understanding of operations activity by documenting locate accuracy and operations performance for better and more consistent results." **800-846-2713; www.subsite.com.**

**COXREELS PC10 SERIES
POWER CORD REEL**

The PC10 Series power cord reel from COXREELS joins its UL-approved product line in both the U.S and Canada. The reels are heavy-duty, industrial-grade power sources. They can replace tangled extension cords and self-retract to increase safety, productivity and efficiency. **800-269-7335; www.coxreels.com.**



**BEE VALVE MULTIPURPOSE
GAUGES**

Bee Valve's line of multipurpose gauges are designed for use with gas, oil, water and any other medium not corrosive to brass or bronze. Gauge options available include single and dual scale, bottom and back mount, dry filled or glycerin filled, and pressures up to 5,000 psi. A vacuum-gauge model is also available. Face sizes range from 1 1/2 to 4 inch. **800-634-3078; www.beevalve.com.**

**IMPERIAL INDUSTRIES
SHATTERPROOF
SIGHTEYE**

Customized specifically for the septic service and portable restroom industry, the Shatterproof Sighteye from Imperial Industries is a direct replacement for glass sighteyes that can shatter easily in severe environments. They are designed in-house by the company's engineering team. **800-558-2945; www.imperialind.com P**





Odor Problems



Septic odors stop with
SWEET AIR™
FILTERING DEVICE

— THE ORIGINAL —

— TUF-TITE, Inc. —

800-382-7009 www.tuf-tite.com

Merry Christmas!

pikrite



*From:
The Pik Rite
Family*

Septic-Scrub™

The Demonstrated Drainfield Restoration/Maintenance Solution

Backed By Science ■ Proven with Experience ■ Many Satisfied Homeowners

Septic-Scrub™ is a superior product for the maintenance and restoration of septic system drainfields. Customers appreciate that it is environmentally safe, contains no organic chemicals and does not produce any toxic by-products. Most importantly, **Septic-Scrub works.** It breaks down sulfide buildup in the biomat and soil to allow for better water absorption.

Learn more about Septic-Scrub at www.arcan.com.



arcan

P.O. Box 31057
Clarksville, TN 37040

For information on increasing sales and providing a valuable service to your customers, call Arcan Enterprises at **888-35ARCAN (352-7226)**

ROEDA

We Get You Recognized

Covering The Portable Toilet World With

CUSTOM & STOCK DECALS

Call now for custom graphics at

800.829.3021



Shop online now at

STORE.ROEDA.COM

roeda.com | info@roeda.com | 20530 Stoney Island Ave. Lynwood, IL 60411



NAWT
National Association of Wastewater Technicians

**YOUR SOURCE
FOR REAL
LEARNING**

Upcoming Training & Events

SAVE THE DATES

Virtual Training

CPOW Inspector

February 9 & 10, 2021

Location: Virtual Online Course

Contact: Lisa Nicoll cpow@cpow.net

CPOW Design

March 2 & 3, 2021

Location: Virtual Online Course

Contact: Lisa Nicoll cpow@cpow.net

CPOW O&M 1

March 16 & 17, 2021

Location: Virtual Online Course

Contact: Lisa Nicoll cpow@cpow.net

CPOW O&M 2

April 13 & 14, 2021

Location: Virtual Online Course

Contact: Lisa Nicoll cpow@cpow.net

CPOW Inspector

May 4 & 5, 2021

Location: Virtual Online Course

Contact: Lisa Nicoll cpow@cpow.net

2021 WWETT Show Shoot-Out Event

Showroom Floor

May 3rd - 6th, 2021

Identify Vacuum Truck pre-trip inspection violations. 1st, 2nd and 3rd place prizes awarded.

ITI Trailers and Truck Bodies located in Meyersdale, PA supplying/ sponsoring a truck.

1st Place Prize:

\$800-\$1000 Septic Services, Inc. Credit, donated by Septic Services.

2nd Place Prize:

\$500 Visa Gift Card, donated by NAWT Board

3rd Place Prize:

\$200 Visa Gift Card, donated by ITI Trailers and Truck Bodies

Online Vacuum Truck Training Available!

Please visit our website for more information.



NAWT
National Association of Wastewater Technicians

**YOUR SOURCE
FOR REAL
LEARNING**

For more information call:

800-236-6298

WWW.NAWT.ORG

INDUSTRY NEWS

Centrisys/CNP announces two promotions

Centrisys/CNP prompted Josh Gable to director of sales and Brett Bevers to regional sales manager.

Gable was most recently regional sales manager for Centrisys, and Bevers was most recently an application

engineer with the company. Gable will focus on identifying areas for growth and advancements, establishing streamlined processes and training regional sales managers. Bevers will focus on collaboration between engineering and customer teams, installation pilot testing and prospect engagement and education.



Josh Gable



Brett Bevers

Marengo Fabricated Steel expands, announces new name

Marengo Fabricated Steel has changed its name to Lincoln Center Mfg. The company has a new location at 2896 OH-61, Fulton, Ohio. Contact phone numbers and emails will not change. LCM will operate as the primary customer service location for vacuum trucks as well as custom fabrication and steel sales. The existing location will continue to operate as Marengo Fabricated Steel as the exclusive manufacturing and distribution center of the company's restaurant equipment line.

Liquid Environmental acquires FloHawks Plumbing + Septic

Liquid Environmental Solutions has acquired the assets of FloHawks Plumbing + Septic serving the Pacific Northwest. Terms of the transaction were not disclosed. FloHawks, based in Puyallup, Washington, will continue to operate under the FloHawks name. FloHawks customers include owners of sewer systems, septic systems and grease traps/interceptors that must be serviced regularly to prevent sewer spills and to protect the public wastewater collections system. **P**

Pumper



**SOCIALLY
ACCEPTED**



facebook.com/PumperMag

twitter.com/PumperMag

youtube.com/PumperMagazine

linkedin.com/company/pumper-magazine

**Tanks,
Trucks
and
Slide-Ins**

Thanks to Michael Septic & Drywell Cleaning



**New LMT
GalVac 300/100
Galvanized Slide-In!**

**Custom Tank Design
and Paint**

Ask for our
latest catalog!



**Vacuum
Trailer
Packages**

Shown with optional galvanizing



ST Series Complete Tank Kits Available



**ENDURA
PAINT**
Paint That
OUTLASTS & OUTPERFORMS

**VAXTEEL
VACUUM TANKS
BY LMT**

READY-TO-SHIP

Septic
and Grease

ST Series Gallon Capacities: 1800 - 2300 - 2500 - 3500



Choose LMT to build your custom vacuum equipment
EXPERIENCED VACUUM PUMP SALES & SERVICE



www.lmtmfg.com
info@lmtmfg.com



Format Friendly over all your favorite devices

EASILY MOVE RESTROOMS

**HITCH
HAULER™**

Carry A Restroom & Super
Mongo Mover On Your
Pickup or Sport Utility



SUPER MONGO MOVER®



Patented



- Move ADA Restrooms
- Aluminum Frame
- Available with 4, 6 or 8 wheels
- Easily Rides on Your Truck
- Ships UPS

DA
Deal Assoc. Inc.

Toll Free: **866.599.3325**
www.DealAssoc.com

\$5,000-\$250,000

ONLY NEED A CREDIT APPLICATION!

No one makes it easier!



For more than 40 years,
Gerry Oestreich has been
a trusted name in new and
used equipment financing.

- New Or Used Trucks
- Portable Toilets
- Pressure Washers
- Trailers
- Cameras
- Jetters and more ...

abc
LEASING & FINANCING

**Equipping Your
Business for Less -
Call Gerry @ 518-857-5206
Today To Learn More!**

ABCLeasingNY@gmail.com

Visit Our New Website: www.abclearse.net

EASY-KLEEN
PRESSURE SYSTEMS LTD.
MANUFACTURER OF HIGH PRESSURE CLEANING EQUIPMENT

SINCE 1982
FAMILY OWNED & OPERATED
BUILT TO LAST
MADE IN CANADA

WOLVERINE
DRY STEAM GENERATORS

DRY STEAM GENERATORS



20/30/40/50 BHP
Up To 2,000,000 BTU

Curing
Thawing
Degreasing
Degassing
Melting
Cleaning & Restoring
Prepping Surfaces for Paint
Purifying
Weed Control



YouTube
www.youtube.com/easyklean
1-800-315-5533
www.easyklean.com • sales@easyklean.com

Surco
Potty Fresh Plus
Portable Toilet Deodorant



Powerfully-effective
odor control liquid
portable toilet deodorant!

Non-Formaldehyde • Deep Blue Non-Staining Dye

SURCO
PORTABLE SANITATION PRODUCTS
800.556.0111
surco.com

Irwin Septic
Pumping - Plumbing - Repairs
(920) 655-8712

FREE PRIVATE LABELING

Drainfield Solutions
Root Control - Septic Solutions
Grease Solutions

www.lenzyme.com
800-223-3083

R. Nesbit Portable Toilets introduces:
The Sani-Klip

A COST EFFECTIVE SOLUTION FOR PROVIDING ALL OF YOUR CUSTOMER'S HAND SANITIZER



CONTACT: KATIE/AMY
R. NESBIT PORTABLE TOILETS
724-652-8232
www.best-portable-toilets.com

CONFINED SPACE ENTRY PACKAGE
ONLY \$3,195

The Best Package On The Market Includes:


- 4-Gas Air Monitor (3 Year Sensor Warranty)
- 7' Tripod
- 3-Way Fall Protection
- Work Winch
- Full Body Harness



Add a Blower with 15' of duct for only \$350!
Add a 5 Minute Escape Respirator for only \$500!

MECH. 800.362.0240
www.mtechcompany.com

The Shaddix Company
FOR SALE
2013 INTERNATIONAL



52,000 GVW, 270 HP Truck;
Only 77,000 miles
Equipped with
NEW Hydraulic Set Bed
12,000# Capacity
\$64,000
Call Dewayne

256-338-4985
www.shaddix.us

Superior
SMOKE

Find Leaks and Sources and Odor
Fast • Inexpensive • Easy

MADE IN USA



Superior 5E Electric Smoker
SuperiorSignal.com/Pumper

T&T Tools, Inc.
800.521.6893

CALL for a FREE Catalog
Many styles Available



Insulated Soil Probes (for locating)
Heat-Treated Hooks (for covers, lids, etc)

www.mightyprobe.com

DREDGING & DEWATERING SERVICE

- Municipal and Industrial • Digester and Lagoon Cleaning
- Double Belt Filter Presses • Liner Repair & Replacement

Fluid Technology, Inc. (513) 241-1600
Fax (513) 756-1995
www.fluidtechnologyinc.com

Fresh Content

IS KEY TO YOUR COMPANY'S MARKETING STRATEGY...

LOTS OF IT.

COLE Media's content generation team specializes in custom-built, affordable solutions exclusively tailored to fit your needs.

COLEmedia
800.257.7222 | cole-media.com

Socially Accepted

facebook.com/PumperMag
twitter.com/PumperMag
youtube.com/PumperMagazine
linkedin.com/company/pumper-magazine

Worth \$1,000s
Yours for FREE

New technologies • Tips
Money-saving deals • And more.

Subscribe Today!
onsite installer.com

Let Us Build Your **JETTER**

Diesel
Propane
Gas

Hot or
Cold

**AMERICAN
JETTER.COM**
866-944-3569

SURCO
PORTABLE SANITATION PRODUCTS

XTREME
BEST Water
Soluble Packets

SURCO
PORTABLE SANITATION PRODUCTS
800.556.0111
surco.com

EASY-KLEEN
PRESSURE SYSTEMS LTD.
MANUFACTURER OF HIGH PRESSURE CLEANING EQUIPMENT

VAN PACK JETTERS
12 GPM @ 3500 PSI

Fresh Lube
Pump Oil Odor Control Additive

Counteracts offensive
exhaust odors
generated by
septic vacuum
pumps

SURCO
PORTABLE SANITATION PRODUCTS
800.556.0111
surco.com

Join A National Brand: www.RooterMan.com

ROOTERMAN
"TO THE RESCUE"

NO ROYALTY
ON PERCENTAGE
OF SALES

Franchise
Package
\$3,975

RESERVE YOUR EXCLUSIVE TERRITORY • Call 1-800-700-8062

**OPEN JETTER
TRAILERS** GROUNDHOG
JETTER

20 GPM @ 4000 PSI

ENCLOSED JETTER TRAILERS
(Hot Water)

Over 30 years building
quality equipment!

HotJetUSA
OUR MOST VERSATILE JETTER!
FULLY LOADED! PRICE INCLUDES DELIVERY!

HOTJET II
WITH PAYMENTS
AS LOW AS **\$565.00**
\$2,995** SALE PRICE
WITH 20% DOWN O.A.C.

35 HP Vanguard Engine • 10GPM @ 4,000 PSI
Cleans 2-12" Drains with Hot OR Cold Water
*Delivery to lower 48 States Only - CALL FOR DETAILS

1-800-213-3272
www.hotjetusa.com

Wishing you
the gifts
of the season —
Peace, Joy,
Hope

YOUR FRIENDS AT COLE PUBLISHING

VACUUM TRUCK HEATERS
440,000 BTU to 4,000,000 BTU

YouTube
www.youtube.com/easyklean
1-800-315-5533
www.easyklean.com
sales@easyklean.com

ARCTIC BLASTER

- > Perfect for all your thawing needs
- > Thaws pipes above & below ground
- > Use on plastic, copper or ABS
- > Perfect for roof drains

Valve Heaters for your Septic Truck
Arctic Valve Heaters

- > No piping changes or welding needed on your truck.
- > For: 3", 4" or 6" MZ Lever Valves
And: 4" or 6" Betts Valves
- > Developed by the inventor of the Arctic Blaster
And They Work!

Heat the Valve,
Not the Sewage

ARCTIC BLASTERS INC.
SUNDRE, ALBERTA
403.638.3934 • ArcticBlaster.com

Pumper CLASSIFIEDS

SEE PHOTOS IN COLOR AT WWW.PUMPER.COM

BACTERIA/CHEMICALS - SEPTIC



2009 International pump truck.

Model: Prostar. New 30-foot hoses. Masport Viper vacuum pump. NEW PTO pump-driven. New 3,000-gallon tank. New back tires. Day runner truck. Mileage 561.171. Call Jim for more information. **541-571-2739. (P01)**

BUCKET MACHINES

Bucket Machines - Sreco truck loader, Sreco pull-in machine, 2-cylinder Wisconsin engines, gear reductions, belt drive. All for \$10,000. 313-600-1700. (P12)

BUSINESSES

Owner is retiring: Nashville, TN portable toilet and dumpster business for sale. Great reputation, consistent customer base, over 12 years in business in one of the hottest areas in the nation. 525 units, (40) 30-yard dumpsters; (4) Dodge pumper trucks and (1) FL70 roll-off truck. Call 615-812-1314 or email toiletcoforsale@yahoo.com. (P12)

For sale: Mom & Pop business in Birch Run, MI. 4 - F550 route service trucks: 2019 F550, 2016 F550, 2009 F550, 1999 F550. 1 - 2007 silverado 2500 pick up with stainless steel push in unit. Over 600 portable toilets, handicap units, portable wash stations, 4 vip flushables. All accounts. Started business in 1999. No land. \$900,000. Owners want to retire. Call 989-746-0009. (P12)

Septic & Cesspool Cleaning Co for sale in Long Island, NY (Nassau County). 5-star online ratings, large client book - servicing wealthy neighborhoods, highly-reputable brand since 1955. Company gross revenue - \$600k+ yearly, significant expansion opportunities, and more demand than can keep up with. Willing to train new owners. ONLY serious inquiries please. David - sfer1024@gmail.com or 516-567-2603. (P02)

Submit your classified ad online!
www.pumper.com/classifieds/place_ad

Northern Illinois septic business for sale. Pumping/installation/repair, all equipment and tools needed turn key operation. Good customer base. Over 20 years. 815-732-7612 or email tbenesh63@hotmail.com. (P01)

For sale: 45+ yr. Septic Bus. Includes 1990 Int 2,000-gal. truck, JD track hoe and dump trailer. In Central FL. \$250,000. Just equipment and phone #352-429-2426, tcraigseptic@gmail.com. (P01)

Selling South Florida septic business with: Pumper 2,700-gallon; 2 dump trucks; 2001 Ford Van; 3 JD backhoes, trailers. Asking \$262,000. POTENTIAL for growth! Only qualifiers contact: Andy Fischer, a.fischer@murphy-businessbroker.com or 786-253-7450. (P12)

www.RooterMan.com. Franchises available with low flat fee. New concept. Visit web site or call 1-800-700-8062. (PBM)

COMPUTER SOFTWARE

FreeServiceReminderSoftware.com, FreeServiceDispatchSoftware.com, FreeRouteManagementSoftware.com. (PBM)

DRAIN/SEWER CLEANING EQUIPMENT

1998 US Jetter Model #4014-300, 4,000 psi, 801 hours. Ready to work. \$16,000. Call 760-634-2822 or email receptionist@burtechpipeline.com with questions. CA (P12)

DEWATERING

Trailer Mounted Portable Rotary Sludge Thickener (RST) Assembly. Just connect it up and thicken! Package - \$20,000. Our land application project use for this device has expired. mark@delta-pioneer.com for full details. FL (P12)

HAND TOOLS



The Rudy Tools #1 is a lifting wrench for fire hydrant shut-off water valve - cost is \$40.00 ea. Also used on grease interceptor ten pound cover lids. The Rudy Tools #2 is a sewer clean-out wrench with sixteen various sizes, three and four-inch sewer clean-out caps - cost is \$25.00. **THE RUDY TOOLS LLC, Rudy Rodriguez 239-872-0336, www.therudytools.com. (P12)**

HAZARDOUS WASTE UNITS

1997 Ford with Cosco 3,200-gallon DOT certified dump and door liquid vacuum truck. Cat engine with Moro M9 vacuum pump. Runs and pumps excellent. \$37,500. KLM Companies 617-909-9044 (PBM)

2000 Mack RD686S cab & chassis with a 4,000 U.S. gallon carbon steel, DOT certified vacuum tank unit. (Stock #0514CV) www.Vacuum-SalesInc.com, (888) VAC-UNIT (822-8648). (PBM)

2000 International with Cosco High Dump 27", DOT Certified, 412 with vacuum pump, pressure offload as well. Cummins Power with low miles and hours. KLM Companies 617-909-9044. (PBM)

2007 Kenworth T800 with Presvac 3,500-gallon DOT Certified dump/door vacuum tank, Hibon 900 CFM 27", new blower and tank inspections, pre-emission with 400 CAT with 18-speed trans. 44k rear 20k pusher 20k front. Great condition. KLM Companies 617-909-9044. (PBM)

Stainless steel DOT Code hazardous waste or septic. Polar 3,600-gallon tank ready to mount on your chassis or sell outright. 20" rear manway, two 4" inch rear valves with full stainless hose trays. KLM Companies 617-909-9044. (PBM)

New 3,200 U.S. gallon, carbon steel, D.O.T. certified 412 vacuum tank, dump type with full open rear door and a Presvac PVB 750 vacuum-pressure pump installed on a 2021 Freightliner 108SD cab and chassis. (Stock# 13855) www.vacuumsalesinc.com (888)VAC-UNIT (822-8648). (PBM)

HYDROEXCAVATING EQUIPMENT



08 International 7600 Vector Hydro-Ex. Cat C13 engine, Hibon 27" blower, 12 yd, 1,200-gal water tank, 800,000 btu HXX burner pkg., 297k miles. 6,864 hrs. Well maintained & ready to work. **Asking \$135,000. 248-345-3993. MI (P02)**



2003 Orange Sterling Vector: Fan unit, 80 gpm rodder pump, 600 ft. hose, 81k miles. Well maintained and ready to work. **Asking \$39,000. 248-345-3993 - Novi, MI (P12)**

JETTERS - TRAILER



The HotJet II® is a best-selling hot-and cold-water drainline cleaner featuring a 35hp Vanguard engine by Toyota and delivering 10gpm @ 4,000psi that cleans drains up to 300' and 12" in diameter. Priced at \$32,995 including freight to the lower 48 states, the HotJet II® is American made using nonproprietary parts for affordability and ease in serviceability making its return on investment truly impressive. **Financing available. 800-624-8186; sales@hotjetusa.com; www.hotjetusa.com (PBM)**

JETTERS - TRUCK

1992 GMC top kit, jet engine is a CAT, 236,000 miles, jet has a new tank (coated inside and out), truck is painted and has a Perkins engine. New wiring, alternator, battery and starter. New valves in pump, Pump is a Myers MH7 70 gpm at 2,000 psi. \$16,500. 313-600-1700. (P12)

PUMPER'S MONTHLY
CIRCULATION REACHES

**23,000+
READERS!**

LIST YOUR EQUIPMENT IN THE PAGES OF PUMPER!
www.pumper.com/classifieds/place_ad

PLACE YOUR AD ONLINE AT WWW.PUMPER.COM - IT'S ALWAYS THERE TO MEET YOUR BUSY SCHEDULE

JET VACS



2013 Peterbilt 348 Vac-Con Truck, 60,000 GVW, Paccar truck engine 9L, 7,111 hours, 72,455 miles, auto transmission, auxiliary engine, John Deere 4045, 1,895 hours. 1,300-gallon water tank, 12 cubic yard debris tank, 420 ft of 1" jet hose, garage kept. Many new parts. Located in Laurel, Maryland. **Please contact by email - khatfield@hatfieldsequipt.com. \$145,000 OBO. (P12)**

LEASE/FINANCING

Western Equipment Finance, a bank-owned direct lender, is committed to continuing to help you prosper. All Equipment Types, New or Used; we have the best rates and terms you deserve. App-Only Financing and credit decisions within an hour. Call the team you can TRUST, Jim Stekl at Western Equipment Finance 701-665-1647. jim.stekl@westernequipmentfinance.com (PBM)

MISCELLANEOUS

Vacant manufacturing facility, 51,000 square feet with high capacity well, with or without pretreatment sewage facility. 2000 Freightliner with 4,100-gallon aluminum tank. 1991 GMC with 2,300-gallon tank. 1979 Articulate John Deere tractor (50 series engine) and 3,300-gallon Balzer tank with injectors. Call 920-290-6452. (PBM)

PARTS & COMPONENTS



Clear the Main Line with ease, JnA Main Line Vac. Just hook the line vac to your hose, insert the incoming mainline pipe and watch the line come clean. Works on 3" & 4" pipe. Free shipping in the US. \$129.99. Order at jnamainline-vac.com. **919-559-9344. (P12)**

Submit your classified ad online!

www.pumper.com/classifieds/place_ad

ALUMINUM VACUUM PIPES: Parts/pipe to help you manage wastewater. Our knowledgeable staff and fast service will help you choose and quickly receive the right pipe & parts. We can custom build almost any aluminum/cast aluminum, black/galvanized steel and PVC fitting. Call 800-246-3685. Schumacher Irrigation, Inc. (P08)

PORTABLE RESTROOMS

4,000 used portable restrooms for sale. Updating our fleet to the new Zenith portable restrooms from Sansom Industries. Prices range from \$125 - \$325. Call Jim Reisinger @ 314-776-4000. (PBM)

PORTABLE RESTROOM TRAILERS



2000 Acsi Restroom Trailer. Women's: 3 stalls, two sinks and diaper changing station. Men's: one stall, three urinals and two sinks. New tires. Heat and air system. **\$8,500. Call 606-886-1915 for additional pictures and information. KY (P12)**

2001 Keith Huber International pump truck. 2 Decons, 28' Tonto, 18' Royal, 2001 ASCI, 16' Presidential, 26' Presidential, portable toilet hauler trailers. 315-437-1291, NY (PBM)

PORTABLE RESTROOM TRUCKS

2015 Ford F750, 71k miles, Allison auto, current DOT, stainless steel 900/400 split tank. Masport vacuum pump. Upgrading to larger truck!! \$62,000. Call or text Terry for more information @ 734-777-0390. (P12)

2008 Dodge Sterling, Progressive aluminum tank, work body, 3,644,195 miles, 1,100 waste/400 fresh. Asking \$9,500. Please call Don at 573-473-4093 for more Information. MO (P12)

2008 Dodge Sterling, 850 waste/400 fresh, work body, Progressive aluminum tank, 3,445,500 miles. Asking \$7,500. Please call Don at 573-473-4093 for more info. MO (P12)

2014 Dodge 5500, 6.7 Cummins, auto transmission, 900/300 aluminum tank, toilet carrier, tow pkg, CAT water pump manufactured by KeeVac, 209,500 miles. Will need new transmission. \$32,000 AS IS. Contact 800-433-2070. PA (P12)



2006 F550 4x4, 600 waste/300 fresh, runs daily. **Aaron 276-620-0533. VA (P12)**



2015 Dodge 5500, Cummins auto, 93,500 miles, aluminum tank, 800 waste/400 water, DC10 wash down Masport pump. **Call JR @ 720-253-8014, CO. (PBM)**



2000 Ford F550. 7.3 diesel engine (the good one) runs and operates, took off route in August as we purchased a new truck that made this one available for sale. 600/300. HLX4 Masport. 12v washdown. Noerrs International went over the truck to prepare it for sale and installed two new injectors, repairs totaled \$2,000. Asking \$15,000. Please contact us through email to avoid scammers to check it out, no mask required. **bandrseptic13@gmail.com. PA (P12)**



2008 Kenworth T170 Satellite Industries stainless steel 950 (650 waste/300 fresh) tank with boom and chem delivery. All aluminum toolboxes. 108,000 miles. Very good condition and ready to be put to work. Only selling cause it's time for us to upgrade. **Call Jake 218-298-1291. Located in Otertail, MN. \$40,000 OBO. (P01)**

Submit your classified ad online!
www.pumper.com/classifieds/place_ad

New Imperial 1,300 U.S. gallon, portable toilet service unit mounted on a 2020 Ford F550 cab and chassis with a Masport HXL4 pump package. (Stock #13933). www.vacuumsalesinc.com (888)VAC-UNIT (822-8648). (PBM)

New Imperial 980 U.S. gallon, portable toilet service unit mounted on a 2020 Ford F550 cab and chassis with a Masport HXL4 pump package. (Stock #13916) www.vacuum-salesinc.com (888)VAC-UNIT (822-8648). (PBM)

New 1,600-gallon portable toilet service unit. (Stock# 13762) **www.vacuumsalesinc.com (888)VAC-UNIT (822-8648).** (PBM)



Chassis 2007 Isuzu NRR Service Truck. 19,500lbs with a 132" wheelbase. Tank is Progress aluminum with 200-gallon fresh water capacity and 400-gallon waste capacity installed by FMI Portland in June of 2014 along with a Honda Direct Drive. Can haul 6 toilets: 4 with the lift gate up, 2 on the lift gate. This truck was a flatbed originally and we purchased, installed tank, liftgate, and hitch in 2014 for an event vehicle. We wanted an NRR for the larger breaks, wheels, and lower rear ratio to be able to pull trailers and still service up to 40 toilets on a smaller route. We are upgrading our fleet to newer models. Maintenance records are available upon request. \$25,000. Please contact kimi@portapros.com or call/text **541-212-3175 for more information. ID (P12)**



Texia Services Portable Toilet Service Truck Bodies - Standard turnkey package mounted on your chassis includes: painted body, lighting, right angle Juroop, DC10, water hose, valves & plumbing and PTO. 1,100/400 - \$22,500; 700/300 - \$19,500; 1,700/600 - \$24,500. **Call 936-641-3938. Check us out on Facebook! (PBM)**



Chassis 2014 Isuzu NPR HD Service

Truck. 14,500 lbs with a 109" wheel-base. Tank is a 2012 WorkMate Junior Slide-In modified and installed on NPR HD. Capacity of the tank is 225-gallons of fresh water, 300-gallons of waste. Can haul 8 toilets, 6 with the flatbed gate up, 2 on the lift gate. Complete hitch and electrics to pull up to 10k trailers. We installed and modified the slide-in liftgate and hitch in 2014 for an event vehicle.

We are upgrading our fleet to newer models; there are no problems that we are aware of. Maintenance records are available upon request. \$34,000, please contact kimi@portapros.com or call

541-212-3175 for more information. (P12)



Two trucks available for sale: 2004

International portable toilet trucks, 1,400-gallon waste and 400-gallon water. \$22,500 each or best offer. Call 305-444-7681. Sold as is, ready to sell FOB. **Miami, Fl. Email manager@friendlyjohn.com. (P12)**

2000 International 4700 cab & chassis with a 500 waste/300 freshwater compartment with a Masport HXL4V vacuum pump. (Stock# 0767C) **www.VacuumSalesInc.com (888) VAC-UNIT (822-8648). (PBM)**

PORTABLE SINKS

4 satellite wave sinks - \$400 each, also 2 PolyJohn ADA's - \$800 each. 320-250-7368. MN (P12)

POSITIONS AVAILABLE

GapVax, Inc., a nationally recognized manufacturing business, is seeking a talented, highly motivated individual to fill a full-time Sales Position in the Midwest (Iowa based preferred) region. GapVax is the leading manufacturer of industrial and municipal vacuum units and hydro-excavation units in the United States. We provide the most reliable, comprehensive, and efficient mobile vacuum units in the industrial and municipal markets. Specifications of the position are listed on our website, www.gapvax.com, click on the Now Hiring link in the left hand column. Send resumes to or betty@gapvax.com or 575 Central Avenue, Johnstown, PA 15902. (PBM)

PUMPS

Buy & Sell all makes and models, new & used vacuum pumps, blowers, high-pressure water pumps, new and good used replacement parts. Buy discounted pumps online 24/7. Call us for a current inventory list. **www.VacuumSalesInc.com, (888) VAC-UNIT (822-8648). (PBM)**

RENTAL EQUIPMENT

Liquid vacs, wet/dry industrial vacs, combination jetter/vacs, vacuum street sweeper & catch basin cleaner, truck & trailer mounted jettors. All available for daily, weekly, monthly, and yearly rentals. VSI Rentals, LLC, **(888)VAC-UNIT (822-8648) www.vsirentalsllc.com. (PBM)**

ROLL-OFF TRAILERS

2001 ESP Roll-off trailer: Two (2) container roll-off trailer good brakes, tires, frame, etc. KLM Companies 617-909-9044 (PBM)

SEPTIC TANK FORMS

Real Good - Used - Heavy Duty - Professionally Built - Precast Concrete Septic Tank Forms & Riser/Splash Box Forms and Delivery Boom Trucks. Equipment list, prices, & pictures - email tankco@charter.net or call 931 526-2964. TN (P12)

SEPTIC TRUCKS



2019 Hino 338 with 2,500-gallon aluminum tank, air-ride, auto., Masport Hydra 407 cfm, 23k miles, 65-gallon fresh water tank. Truck runs and drives great. Will be available early to mid December. **\$98,000. Kirkwood, PA. 717-529-0931. (P12)**



2016 International 4300 has a 6.7 Cummins engine, Allison automatic transmission, 148,000 miles, A/C, cruise. New: 2,000-gallon tank, Juroop PN-84 vac-pump, stainless steel hose trays, paint & aluminum wheels. **\$59,000. Financing and delivery options available. Call 740-820-5338. OH (P12)**



2015 International, Cummins engine, automatic, new 2,500-gallon carbon steel tank, new Masport Viper pump. **\$65,000. Call Alan 786-908-5436. (P12)**

2011 Western Star 4900, Detroit 475 hp, tri-axle, 8-speed LL, Elliot 4,800-gal, 274,055 miles, air-ride, 24.5 aluminum wheels, engine brake. Price \$49,900. Contact Ray 856-534-0205. NJ (P12)



2013 International 4300, 128k miles, DT-466 (245HP), Allison automatic, new 1,800-gallon tank, new Juroop PN-58 Razor Pak vacuum pump (230CFM). **\$59,000. 305-691-8407. (P12)**



2014 Freightliner M2, Cummins ISB (285 hp), Allison automatic, 142k miles, new 2,000-gallon tank, new Juroop PN-58 (230 cfm) vacuum pump. **\$66,000. 305-691-8407. (P12)**



2013 Freightliner M2 112, DD13, 350 hp, 10-speed, 305k miles, original double frame, new 4,000-gallon steel tank, new Masport Hydra Plug and Play, 58,000 GVW. **\$80,000. Call Alan 786-908-5436. (P12)**

2014 Freightliner M2 Business Class: Cummins ISB with 265 hp Allison auto, 185k miles. New cab paint, frame just sand-blasted and painted black, new Virgin tires on aluminum rims, complete service of all fluids and filters. New 2,500-gallon vacuum tank with a 365 cfm vacuum pump, 120' 3" suction hose, 10' 4" discharge hose, stainless steel cam locks and dust caps, all LED lighting, large tool box. \$61,000. Call or text for more information 734-777-0390. (P12)

2008 Kenworth T300, alum 2,800-gallon tank, jetting system, Masport 400 water cooled pump. 90% tire tread, Alcoa rims all around, 148,000 miles, Eaton Fuller 10-speed trans. Needs paint. Asking \$65,000. Contact David 916-726-5150 or 916-705-1405 (cell). CA (P12)

Pumper

AVERAGE MONTHLY CIRCULATION REACHES

23,000+ READERS!

PLACE YOUR AD ONLINE AT WWW.PUMPER.COM - IT'S ALWAYS THERE TO MEET YOUR BUSY SCHEDULE



For sale: 2004 International 4300, non-CDL septic truck, 2,100-gallons, 500k miles. New power steering pump and box, new injectors, new pro cable. This truck was very well taken care of. It's definitely a work horse and ready to work. **\$40,000 OBO. Call Gerry 720-224-1978. CO (P12)**



2005 International 7500 HT570 pre-emissions Transway pump truck for sale. Allison automatic transmission, 3,600-gallon Progress aluminum tank, 866 Challenger NVE vacuum pump. 300ft. of hose included, heated valves & see-level indicator. Tires good. 293,317 miles. Original owner. **\$25,000 OBO. Please call Jim at 847-343-5068. IL (P12)**



2004 Mack Vision CX613. Mack AC310 engine, 3,500-gallon Amthor steel tank made in 2011, NVE 866 Challenger pump, Eaton 7-speed, 360,000 miles. Full opening rear door and hoist. **\$37,500. Randy at 701-527-1491 or A1septicplus@gmail.com. Located in ND. (P12)**

Pre-owned 2008 Western Star with a 5,000-gallon, carbon steel, vacuum tank and Wittig WPS150 pump package. (Stock #9249C). **www.vacuumsalesinc.com (888)VAC-UNIT (822-8648) (PBM)**

Pre-owned 1984 Mack R686ST cab and chassis with a 3,000 U.S. gallon, carbon steel, D.O.T. certified, vacuum tank unit. (Stock # 6115C). **www.vacuumsalesinc.com (888)VAC-UNIT (822-8648) (PBM)**



2016 International 4300, has a 6.7 Cummins engine, Allison automatic transmission, 148,000 miles, A/C, cruise. New: 2,000-gallon tank, Jurop PN-84 vac-pump, stainless steel hoses, paint & aluminum wheels. \$59,000. Very clean with all new equipment. Financing and delivery options available. **Call 740-820-5338. OH (P12)**



1989 International DT466, 5-speed, 2-speed rear, w tandem pusher, 2,300-gallon tank, everything works, new pump installed March of 2018, never had to add oil, tank is rusted. **\$15,000 OBO. 501-276-8676. AR (P12)**



Low mile pre-emission Peterbilt tandem with Cummins. Low mile Kenworth with aluminum tank. And a brand new International with aluminum tank. Priced to sell! Central Arkansas. Logan 832-928-0985. Caleb 281-914-1192. Shipping, financing, warranties, **72 point inspections in all three. (P12)**

2005 Freightliner M2-112 quad-axle cab & chassis with a 5,000-gallon, aluminum (4,700 waste and 300 water) dump type tank and an NVE 866 pump. (Stock # 6573C). **www.vacuumsalesinc.com (888)VAC-UNIT (822-8648) (PBM)**

Pre-owned Keith Huber Dominator, 4,000 U.S. gallon, two compartment, dump type unit, with a Becker 440 vacuum pump package. Mounted on a 1999 Sterling cab & chassis. **www.vacuumsalesinc.com (888)VAC-UNIT (822-8648) (PBM)**



1999 Sterling DS999, M11 Cummins, Eaton Fuller 10-speed transmission, new 3,600-gallon tank ~ never used, Fruitland pump, new tires. **\$49,900. Scott Salonen 763-213-8235. (P12)**



2012 International 4300, Allison auto-trans, super clean and ready to work!! NO DEF fluid or DPF filter so the truck has GREAT POWER and MPGs. It also greatly reduced maintenance and operational costs with these components gone. 3,200-gal vacuum tank makes big jobs easy with 32" clean out hatch, Masport rebuilt 400CFM liquid cooled pump, good tires, very clean and comfortable interior w/ air-ride/lumbar driver. Recently replaced: Muncie soft start PTO & drive shaft, air compressor, fuel pump, batteries, brakes, steer and drive tires and more. Can provide shop records. Only 189k miles. \$55,000 OBO for a quick sale. It won't be on the market long! **Call Today 803-718-4727. (P01)**



2003 Kenworth, 2,500-gallon, 3126 CAT engine, Allison automatic transmission, 380,000 miles, 1 owner, 1 driver, METICULOUSLY maintained, garaged since new. **\$42,000. Contact Foster 631-514-9493. NY (P12)**

New 4,000 U.S. gallon, aluminum, vacuum-pressure tank mounted on a 2021 Peterbilt 348 cab & chassis with NVE Challenger 887 fan cooled vacuum pump. (Stock #13899). **www.vacuumsalesinc.com (888)VAC-UNIT (822-8648) (PBM)**

1995 Mack CH612 cab & chassis with a Presvac 2,300 U.S. gallon, C/S, vacuum tank and a Wittig RFL100 vacuum pump (coming in August). (Stock # 6224V). **www.vacuumsalesinc.com (888)VAC-UNIT (822-8648) (PBM)**



2002 International Paystar, C12 CAT, 8LL trans., full lockers, 515,000 miles, 4,500-gallon steel tank with hoist. Wittig water cooled pump, heated valves, SeeLevel indicator. Aluminum hose trays, 100 feet of 3-inch hose included. Very dependable and ready to work. **\$68,000. Located in West Central, WI. Call 715-963-2727. (P12)**



2012 International Super Cab Pump Truck with 3 axles (1 lift axle). Transway pump package with a 4,000-gallon tank. This truck has a newly factory rebuilt Allison transmission with a 1-year warranty. The current mileage is 132,915. Asking price of \$85,000. Great truck that is ready to go to work! **Call Ted at 804-731-3822. VA (P12)**



International HX 110BBL Quad-Axle SS ITI Septic/Tank Truck, 565 hp Cummins X15, Eaton Ultrashift. 3 REMAINING AT \$206,900! **Call Today! Hill International Trucks 724-236-7110. PA (P12)**

LIST YOUR EQUIPMENT FOR SALE IN PUMPER CLASSIFIEDS!
www.pumper.com/classifieds/place_ad



International HX 110BBL Quad-Axle Pik-Rite Septic/Tank Truck, 565 hp Cummins X15, Eaton Ultrashift. 2 REMAINING AT \$189,900! **Call Today! Hill International Trucks 330-462-7578. OH (P12)**



2011 Western Star, 275,000 miles, 4,620-gallon Elliott septic tank with Rotary-vane pump, National Vacuum Equipment (NVE). Truck - Detroit DD15 14.8L 475 HP, Eaton manual RTO-16908LL 8LL-speed, rear 4.30 tri-axes, GVWR (lbs) 86,000, steel frame, 260" wheelbase. Delanco, NJ. **\$59,500. Call Peter at 516-297-3691. (P12)**



2020 Hino, non-CDL, 2,000-gallon, 20k miles, automatic, new pump, tool-box, does not include hoses. **\$78,900. Call Al 704-231-3443. (P12)**



2002 International 4300, 150,000 miles, 2,500-gallon steel tank, Jurup pump. Have more photos and video. **\$30,000. Roger 423-855-2828 or plumbsewer@aol.com. (P01)**

2012 Freightliner M2112 with new 5,000-gallon carbon steel Dynavac septic tank. Triaxle with 450 HP DD13 with Fuller 10-speed trans, air-ride suspension, Fruitland 500 vacuum pump, excellent condition. KLM Companies 617-909-9044. (PBM)



2005 Volvo VN, truck and pump run great, 3,300-gallon tank, 309,835 miles. **\$48,000. Call Ray @ 734-847-1000. (P12)**



1998 Kenworth w/ Cummins engine, Eaton transmission, air-ride, 2,500-gallon steel tank, NVE 367 Challenger pump, great shape. **\$22,500. 720-253-8014. (PBM)**



2012 Freightliner, Cummins 280 HP, 6-speed manual, new 2,500-gallon tank, 2 tool boxes, 420 CFM pump. **\$68,500. Call for pictures 919-559-9344. (P12)**

Vacant manufacturing facility, 51,000 square feet with high capacity well, with or without pretreatment sewage facility. 2000 Freightliner with 4,100-gallon aluminum tank. 1991 GMC with 2,300-gallon tank. 1979 Articulate John Deere tractor (50 series engine) and 3,300-gallon Balzer tank with injectors. Call 920-290-6452. (PBM)



1991 GMC Kodiak, 2,300-gallon tank, 427 with 5/2-speed, air brakes, Moro M10 pump, recent tune-up, recent pump rebuild. 155,000 miles. \$19,500. **Call Kelly 608-835-7767. (PBM)**



2007 Mack Granite tank truck with 6,000-gallon aluminum tank with sight glasses. Primarily used for removing and hauling residential septic waste. (2) 20,000 pound steerable drop axles with NYS Controls, front axle 23,000 pound rated, rear axle 46,000 pound rating, tire size - front: 425/65R 22.5, drive: 12R 22.5, drop: 425/65R 22.5. Transmission: 8-speed, split shift with low and high range. (2) - 66-gallon fuel tanks on the truck. Has a positive displacement vacuum pump, with additional air val controls that can be added. Total hours: 4,664. **Miles: 63,095. ASKING \$115,000 OBO. 585-377-1700. NY (P01)**

1995 Mack, TR 54.000 LIC, weight under CDL, Masport pump, 3,600-gallon tank. Vehicle ID# 1M1AA13YOSW054343. Asking \$20,000. Call 910-733-1746 or email r_and_d_waste@yahoo.com. NC (P12)



2016 Freightliner M2, 6-speed manual transmission, A/C is in good condition, 90% rubber on tires, 290,000 miles, 2,500-gallon tank, Jurup R260 pump, well maintained, everything new. **\$50,000. Call Jerry 800-721-2774. (PBM)**



2014 International 4300, under CDL, DT466 diesel, auto., 138k miles. Last winter it got a new 1,800-gallon steel tank with new Fruitland pump. \$57,500. **Call JR @ 720-253-8014, CO. (PBM)**



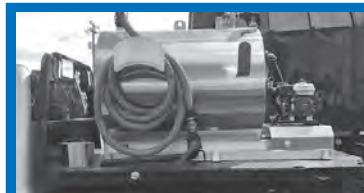
Texla Services Vacuum Truck Bodies - Turnkey package mounted on your chassis includes: painted body, lighting, valves, PTO and pump. 3,600-gallon - \$25,000; 2,500-gallon - \$22,000; 1,500-gallon - \$18,500. Many custom options are available. Bodies out of paint: 2,500-gallon - \$13,500. Self-contained skids available. **Call 936-641-3938. Check us out on Facebook! (PBM)**

SERVICE AND REPAIR

Dynamic Repairs - Inspection Camera Repairs: 48-hr. turn-around time. General Wire, Ratech, Ridgid, Electric Eel, Gator Cams, Insight Vision, Vision Intruders. Quality service on all brands. Rental equipment available. For more info. call Jack at 973-478-0893. Lodi, New Jersey. www.dynamicrepairs.biz (PBM)

SLIDE IN UNITS

2015 Robinson Vacuum Tanks slidein 300-gallons waste, 150-gallons fresh, Conde pump replaced within the last year. Everything works good. \$4,700. Kevin 732-580-5089. NJ (P12)



NEW aluminum slide-in tanks. 2 available. 450-gallon (300/150), Honda motors, Masport pumps. **Call JR @ 720-253-8014 or Mike @ 303-478-4796, CO. (PBM)**

LIST YOUR EQUIPMENT FOR SALE IN PUMPER!
www.pumper.com/classifieds/place_ad

SUBMIT YOUR CLASSIFIED AD ONLINE at

www.pumper.com

PLACE YOUR AD ONLINE AT WWW.PUMPER.COM - IT'S ALWAYS THERE TO MEET YOUR BUSY SCHEDULE

TANKS



2016 110bbl (4,700-gallons) Crown Vac Tank - Tank is in very good condition. Only used for fresh water. Has heated valves and comes with Fruitland pump. Ready To Use!!!! Asking \$22,500 OBO for tank and pump. **Call 607-329-0763 for more details. NY (P12)**

2017 Best stainless slide-in vacuum tank. 400 waste/200 fresh. The tank and pump are in great working condition. I sold all of my units and no longer have a use for the tank. \$11,000. Please call 859-743-8821. (P12)

New 4,600-gallon Vac-Tanks complete with full length aluminum hose trays, lighted tube sight gauge, painted & lined. SPECIAL CLOSE-OUT PRICE - \$14,975. Please contact Air-Flo Mfg./Crown Tank at 607-733-8284. NY (P12)



NEW 2,000- to 2,500-gallon aluminum tanks with lights; NEW 1,800- to 2,500-gallon steel tanks with lights. New 450-gallon (300-gallon waste/150-gallon fresh) aluminum slide-ins. In stock, ready to ship. New and used CDL and non-CDL trucks available.

Call JR @ 720-253-8014 or Mike @ 303-478-4796. (PBM)



50,000-Gallon Septage Storage Tank - FREE to someone who will move it from existing location. Canton, OH. **Call 330-494-3000 (PBM)**

Vacuum Tanks - New: 800- to 5,000-gallon tanks available. 3,600-gallon tanks \$14,000. 2,500-gallon tanks \$12,000. Delivery available. Contact Jerry: 800-721-2774; JEagleTanks@yahoo.com. (PBM)



Tanks in stock, ready to ship out or let us install it for you. Restroom, septic, grease in stock with mounting kits. **Call 888-6VACTANK today! (PBM)**



Used Steel Vacuum Tanks and Masport HXL400 Plug and Play. 4,200-gallon \$9,900. Pumps - \$2,500. Gasco Triplex 3364-AL - \$750. **269-751-5167 (PBM)**



U.S. Tanks Industry, new 1,200-5,000-gallon tanks in stock! Options - two compartment, hoist, installation available, quick build time! **305-691-8407. (PBM)**



Frac Tanks from Geneva Equipment. Financing available! Delivered to your door! Perfect for: Portable sanitation storage; Dewatering; Wastewater storage and treatment; Hydroexcavation; Stormwater runoff. Geneva has over 1,000+ frac tanks available, epoxy lined and EPA compliant.

Call 855-202-7872 or sales@genevaequipment.com www.genevaequipment.com (PBM)

TOOLS

T&T Tools: Probes, Hooks. Probes feature steel shafts with threaded and hardened tips. The insulated Mighty Probe™ tested to 50,000 volts. Top Poppers™ open manhole covers easily. Free catalog. www.TandT-tools.com. Phone 800-521-6893. (CPBM)

Crust Busters - Portable, lightweight machine guaranteed to mix up septic tanks and grease traps! Save time and money! www.crustbusters.com, 1-888-878-2296. (PBM)

TOYS

Septic pumper and vacuum die-cast toy trucks in your choice of colors and logos. Several cabs available. Call 877-450-2100, write to Granite State Collectibles, PO Box 440, New Ipswich, NH 03071; or www.granitestatecollectibles.com. (PBM)

TRAILERS-VACUUM/TANKER



In stock, 6000- and 6300-gallon aluminum single-compartment Imperial vacuum trailers. **Call Cory 800-558-2945 Ext. 426 (PBM)**

TRUCKS (DUMP, SEPTIC, MISC.)



1997 Peterbilt, has a 3406E CAT engine rebuilt about 2 years ago, LC 420 pump, 4,200-gallon tank, 15-speed transmission, 3.70 gear ratio, Ds44e rear end rebuilt a year ago, new camshaft, new water pump, all new cylinder kits, replaced the ECM, replace engine head, 11r22.5 tires, we put about 70,000 miles a year on this truck, it has 475 horsepower and 1,750 lbs of torque... Serious inquiries only, asking \$25,000 or best offer. My name is Wyatt, please call or text me @ **205-842-7845 or email me at jdsseptic@gmail.com. Thank you and God Bless. (P12)**

FOR SALE - 2013 Vacuum Truck IHC 7600, MaxForce 13, 10-speed, 13.2k steerable pusher axle, 4,500-gal Advance aluminum tank, Garnet SeeLevel gauge, NVE 866 air-cooled vacuum pump, jetter equipped. Too many options to list. NEEDS ENGINE. \$29,500. Contact jeffc@mahoneyeyes.com for full specs. IN (P12)

Submit your classified ad online! www.pumper.com/classifieds/place_ad



2003 Mack with Cusco tank. 4,200 US gallon DOT certified, carbon steel, full open rear door, dump type, vacuum tank with a PD blower and high pressure jet system. Truck is in good working condition. **\$55,000. 1-800-941-0838 or text 954-614-2040. FL (P12)**



International HX 110BBL Quad-Axle J&J Water Truck, 565 hp Cummins X15, Eaton Ultrashift. 4 REMAINING AT **\$193,500! Call Today! Hill International Trucks 724-236-7109. PA (P12)**



International HX 110BBL Quad-Axle Pik-Rite Water Truck, 565 hp Cummins X15, Eaton Ultrashift. 2 REMAINING AT **\$189,900! Call Today! Hill International Trucks 330-462-7576. OH (P12)**



2018 Kenworth, 4,000-gallon, automatic, Cummins 425 hp, new pump, new tank, hoses are not included. **\$98,000. Call AI 704-231-3443. (P02)**

SIGN UP
for e-newsletters

pumper.com



1995 International with tank and vacuum pump: GVW 53,608, 343,550 miles. Engine: Cummins M11, white cab with red Engle tank. Stainless utility box, Dee Zee aluminum box, stainless side rails for hoses with hose hangar at back of truck, hydraulic cylinder tank lift, PTO with in cab controls for vacuum pump and tank hoist, Masport rotary vane vacuum pump - Model HXL400W, series #32744, rear step bumper, 3,000+ gallons. Email or call for more pictures well@newulmtel.net or **507-354-8633**. **\$29,000 or best offer. MN (P12)**



USED TRUCKS

Andy Gump has too many trucks! We have all kinds of trucks available - pumping trucks, flat beads, combo trucks, etc! All diesel fleet. We need to get these moved - so don't be scared to make an offer! Contact us at marketing@andygump.com or **661-510-2261**. **CA (P12)**



2013 International, 52,000 GVW, 270 HP, only 77,000 miles, equipped with NEW hydraulic set bed, 12,000 lb capacity. **\$64,000. Call Dewayne 256-338-4985. (PBM)**

VACUUM LOADERS

2003 Sterling with SuperSucker vacuum loader, 27' blower with spare blower for the truck. 400 HP with Fuller 14708LL trans, 44k rears 20k front. Very clean and runs excellent. KLM Companies 617-909-9044. **(PBM)**

2 - Hepa filter units, 5,000 cfm, a lot of extra carbon filters, \$8,000 for both units. 313-600-1700. **(P12)**

2008 Demo Internationals 7600 with Guzzler Ace XXS4118TS wet/dry industrial vacuum loader, 18-yd. debris body, dump-type, carbon steel vacuum tank. Demo/rental units. (Stock #4401C) **www.VacuumSalesInc.com, (888)VAC-UNIT (822-8648). (PBM)**

2000 Guzzler Ace International chassis with CAT engine. Great running truck and blower. Tank body was recently replaced brand new from Guzzler. KLM Companies 617-909-9044. **(PBM)**

VACALL ALLVAC AVR8, 18-yard debris body mounted on a 2014 Freightliner 114SD cab and chassis. (Stock #033R). **www.vacuumsalesinc.com (888)VAC-UNIT (822-8648). (PBM)**

2015 Freightliner 114SD cab & chassis with a VACALL AVR8-18 industrial vacuum loader. (Available for rent or purchase). (Stock # 039R). **www.vacuumsalesinc.com (888)VAC-UNIT (822-8648). (PBM)**



PUMPER'S MONTHLY CIRCULATION REACHES

23,000+ READERS!

DEDICATED
TO THE LIQUID
WASTE INDUSTRY.

Pumper

**EAT. SLEEP.
SAVE THE ENVIRONMENT.
REPEAT.**

Pumper

IT'S YOUR MAGAZINE. TELL YOUR STORY.

Send your ideas for future articles to editor@pumper.com



LIVE! LOCAL! FREE!

LIVE OUTDOOR DEMONSTRATIONS AND
EQUIPMENT EXHIBITS FOR WATER AND
WASTEWATER CONTRACTORS AND MUNICIPALITIES.

Starting June 2021,

WEQ IS TRAVELING THE COUNTRY

A light blue map of the United States is centered on a dark red background. Four black location pins are placed on the map, each connected by a dashed white line to a text label. The labels include the city name and the event date. The map is decorated with several white cloud icons. The event schedule is as follows:

- NASHVILLE** *September 2021*
- YORK** *June 2021*
- TEMPE** *April 2022*
- JACKSONVILLE** *January 2022*

866-933-2653 | WEQFAIR.COM

1.888.428.6422

SNELSON@TANKTEC.BIZ

TankTec

Tank Technologies & Supply Co, LLC

WWW.TANKTEC.BIZ

300 to 6000 Gallons

Aluminum or Stainless



RAM 4500 HEMI

1275 GALLON RESTROOM SERVICE 900/375
NVE304, 210 CFM
FLOJET

\$73,250

INTERNATIONAL CV515

1500 GAL RESTROOM SERVICE 1100/400
NVE304, 210CFM
DC10 / HANNAY

\$88,800

KENWORTH T270

2000 GAL RESTROOM SERVICE 1500/500
NVE304, 210CFM
DC10 HANNAY
DUAL SERVICE

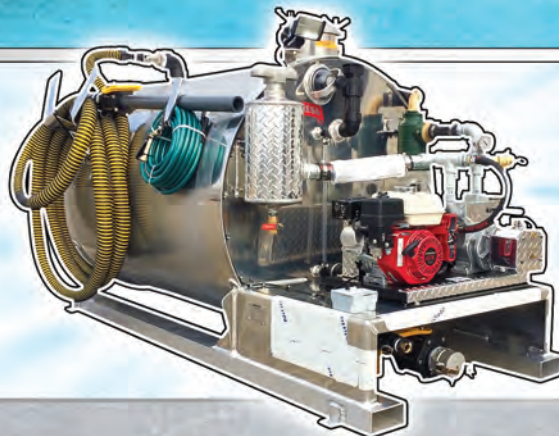
\$106,600



300 Gallon (200/100)
450 Gallon (300/150)
600 Gallon (400/200)
800 Gallon (540/260)
995 Gallon (670/325)

**IN STOCK
SIZES**

Completely self-contained and ready to work!
Smaller or larger sizes available.
Trailer mount, flatbed mount and
custom configurations available.



SLIDE IN TANKS

Standard Features:
Aluminum construction
25' vacuum hose with valve and wand
Honda engine driven vacuum pump
12v water pump

FACTORY BUILT TRUCKS, BUILT-TO-ORDER
IN-STOCK, FINANCING & LEASE OPTIONS

TankTec

TANKTEC USES FLOWMARK FOR FACTORY BUILT TRUCKS



2000 PORTABLE RESTROOM



FROM **\$106,600**



**CALL FOR YOUR
YEAR END
TAX PURCHASE!**

KENWORTH 3600 GALLON



+FET
FROM **\$139,900**

FORD 1500 GALLON



FROM **\$77,300**
GAS

FROM **\$84,900**
DIESEL

ISUZU 999 GALLON PRT



FROM **\$70,400**
GAS

FROM **\$78,300**
DIESEL

RAM 1275 GALLON PRT



FROM **\$73,300**
GAS

FROM **\$89,800**
DIESEL



PRESVAC SYSTEMS

DESIGNED AND BUILT FOR PERFORMANCE



Liquidvac

- > 4500 US Gal. Carbon Steel Tank
- > NVE Max Package 866
- > 520 CFM @ Free Air
- > Max Pressure 20 PSI

Liquidvac

- > 3600 US Gal. Carbon Steel Tank
- > Fruitland RCF1200
- > 716 CFM @ Free Air
- > 500 CFM @ 15" HG
- > Max Pressure 15 PSI



Powervac

Mini 2600 Jetter

- > Waste Tank: 4200 US Gal. Carbon Steel
- > Water Tank: 1200 US Gal. SS 304 Water
 - > Robuschi RBDV105 Blower
 - > 2600 CFM @ Free Air
 - > 1400 CFM @ 15" HG
- > Max Vacuum 27" HG Continuous
- > Max Pressure 8 PSI
- > Water Pump: 20 GPM @ 2000 PSI
- > Hose Reel: 3/4" x 200' Capacity
- > 6" Top Loading Boom



Quality...

...is our Trademark

Established 1972



4131 Morris Drive
Burlington, Ontario, Canada L7L 5L5
Fax: 905-681-0411

Nationwide Sales & Service

800-387-7763 | 905-637-2353 | www.presvac.com